

# Errata to the January 1, 2005, Georgia State Amendments to the CABO One and Two Family Dwelling Code (International Residential Code for One- and Two-Family Dwellings), 2000 Edition

## CHAPTER 6 WALL CONSTRUCTION

### SECTION R602 WOOD WALL FRAMING

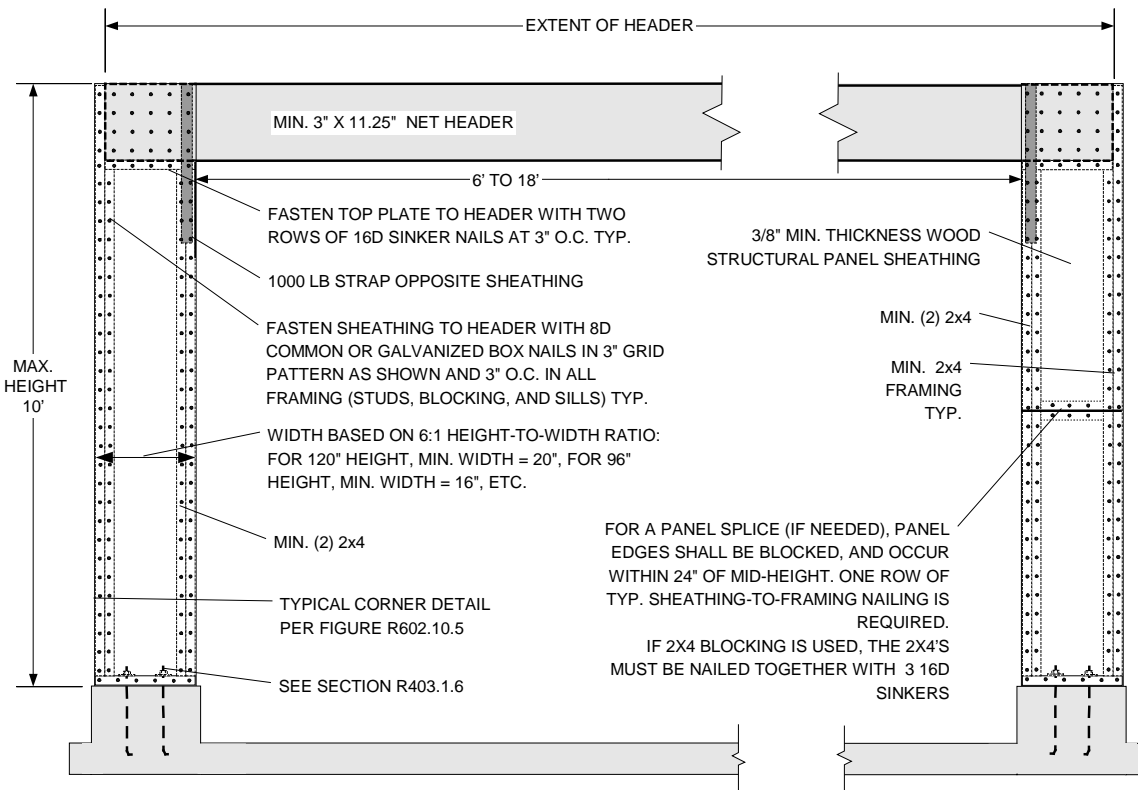
#### R602.10.5 Continuous structural panel sheathing.

##### Exception:

In second sentence, change “15 inches (381 mm)” to “16 inches (406 mm).”

In third and fourth sentences, change “Figure R602.10.5” to “Figure R602.10.5(2).”

Add Figure R602.10.5(2) (see below).



**FIGURE R602.10.5(2)**  
**GARAGE DOOR BRACED WALL PANEL FOR USE WITH CONTINUOUSLY SHEATHED WALLS**

**End of Errata.**