

2025 AMERICORPS NOFO APPLICATION WEBINAR



AmeriCorps
Georgia

PROGRAM DESIGN

Zaneta Ivery, Senior Program Officer
October 24, 2025

Session Overview

During this session, the following **categories** related to the AmeriCorps application will be highlighted:

- Applicant Information
- Narratives (10 pages)
 - Executive Summary
 - **Program Design**
 - **Community and Logic Model**
 - **Evidence Tier**
 - **Evidence Quality**
 - **Notice Priority**
 - **Member Experience**
 - Organizational Capability
 - Cost Effectiveness and Budget Adequacy
 - **Evaluation (if applicable)**
- **Performance Measure Module**
- Budget Module

Application Scoring

PROGRAM DESIGN 50%

Operational Grants

1. Community & Logic Model - 24 Points
2. Evidence Tier - 12 Points
3. Evidence Quality - 8 Points
4. Notice Priority - 0 Points
5. Member Experience - 6 Points

Planning Grants

1. Community & Logic Model - 24 Points
2. Planning Process & Timeline - 26 Points

Application Materials

Applicants must be familiar with the following documents that will assist you with the completion of your application.

- **NOFO:** Georgia Specific Notice of Funding Opportunity (NOFO) Guidelines
- **AmeriCorps Application Instructions:** Attachments with detailed budget instructions and performance measure submission instructions.
- **Mandatory Supplemental Guidance:** Definition of terms referenced in NOFO
- **Performance Measure Instructions:** Types of Performance Measures related to AmeriCorps and detailed info
- **Public Health Performance Measure Instructions:**

These documents are available on the Georgia Serves and AmeriCorps website.





AmeriCorps

PROGRAM
DESIGN

**COMMUNITY &
LOGIC MODEL**

Updates to Community and Logic Model

- Increasing the information requested about the community in which the applicant seeks to serve.
- Logic Model will be where the applicant will provide information about their program.
- No additional narrative is needed other than what is contained within the logic model.

Reference:
NOFO

What is Community?

The applicant will provide a detailed summary of the community problem, including:

- The role current or historical inequities faced by underserved communities may play in contributing to the problem.
- The community need as it relates to the [CDC's Social Vulnerability Index](#) and to communicate the severity and prevalence of the problem.

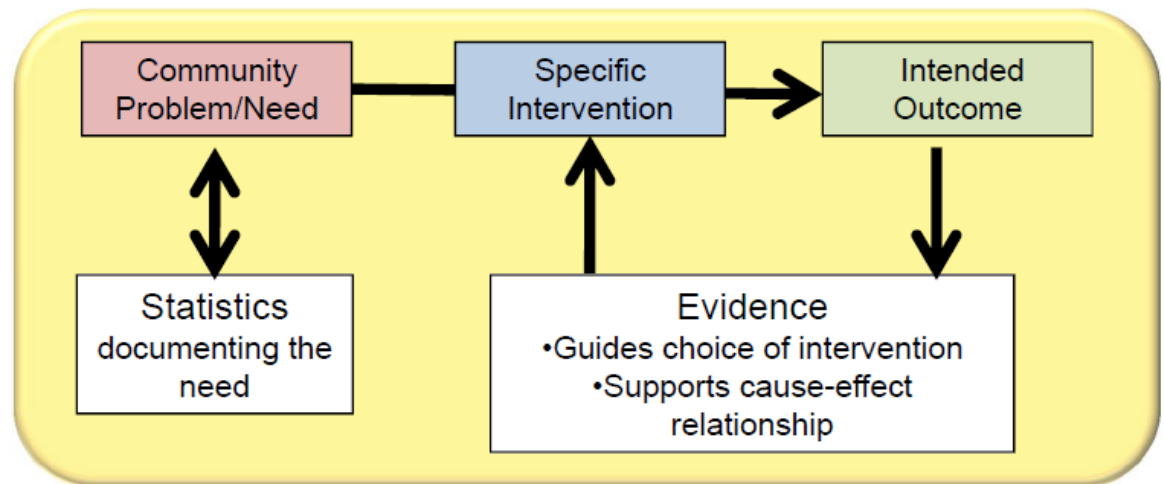
The CDC/ATSDR Social Vulnerability Index (CDC/ATSDR SVI) is a tool that uses U.S. Census data to determine the social vulnerability of every census tract. ATSDR's Geospatial Research, Analysis & Services Program (GRASP) maintains the CDC/ATSDR SVI to help public health officials and local planners better prepare for and respond to emergency events like hurricanes, disease outbreaks, or exposure to dangerous chemicals.

Reference:
NOFO

Community

Applicant should explain the “theory” of how they believe their intervention can address or solve an identified problem/need in a community.

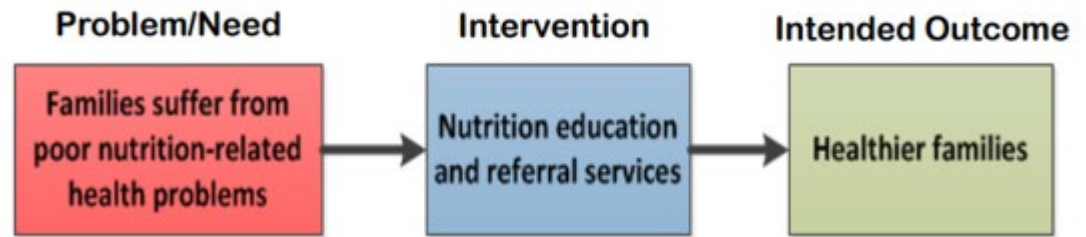
There are three main elements:



Reference:
NOFO

Example of community intervention

Nutrition Assistance Program:



The applicant's intervention is likely to lead to the outcomes identified in the organization's Logic Model.



AmeriCorps



AmeriCorps

PROGRAM
DESIGN

LOGIC MODEL

What is a Logic Model?

- A detailed visual representation of a program and its theory of change.
- Communicates how a program works by depicting the intended relationships among program components.
- Generate a clear and shared understanding of how the program works

Reference:

- *NOFO*-pp. 21
- *Application Instructions* - p.7

Logic Model Template



Logic Model Template

Problem	Inputs	Activities	Outputs	Outcome(s) Short-Term	Outcome(s) Medium-Term	Outcome(s) Long-Term
The community problem the program activities (interventions) are designed to address.	Resources necessary to deliver the interventions including # of service locations/sites and number/type of AmeriCorps members.	The core activities that define the intervention the members will implement or deliver. Includes the duration, dosage, and target population.	Direct products from delivering the intervention.	Changes in knowledge, skills, attitudes, and opinions that will be, almost always, measurable during the grant year.	Changes in behavior or action that may be, depending on the program design, measurable in the program year.	Changes in condition or status in life that, depending on the program design, may be measurable in the program year.

The logic model maxes out at 4,000 characters which is about **8 pages**.

Reference:

- See [Logic Model Template](#)

Logic Model Components

- A summary of the community **problem**.
- The **inputs or resources** that are necessary to deliver the intervention, including but not limited to:
 - Locations or sites in which members will provide services
 - Number of AmeriCorps members that will deliver the intervention
- The **activities** define the intervention or program model that members will implement or deliver, including:
 - The **duration** of the intervention (e.g., the total number of weeks, sessions or months of the intervention)
 - The **dosage** of the intervention (e.g., number of hours per session or sessions per week)
 - The **target population** for the intervention (e.g., disconnected youth, third graders at a certain reading proficiency level)

Logic Model Components (cont'd)

- The measurable **outputs** that result from delivering the intervention (i.e., number of beneficiaries served, types and number of activities conducted).
 - Outputs: Counts
 - Number of people served.
 - Number of products created.
- The **outcomes** demonstrate changes in knowledge/skill, attitude, behavior, or condition that occur as a result of the intervention.
 - Outcomes are change in:
 - Attitude/Belief (*Increased interest in school*)
 - Knowledge/Skill (*Improved reading scores/grades*)
 - Behavior (*Increased school attendance*)
 - Condition (*Successful completion of high school*)
- Outcome Categories: Short-term, Mid-term and Long-term

Logic Model Expectations

- The Logic Model may not **exceed eight pages** when printed with the application from the “Review” tab in CNCS’s web-based management system.
- Applicants with multiple interventions should complete one Logic Model chart which incorporates each intervention.
- Logic Model content that exceeds eight pages will not be reviewed.

NOTE: GA Serves advises applicants to include a PDF/Word document of the logic model submitted in eGrants with the additional documents.

Reference:

- *NOFO*
- *Application Instructions*
- *Logic Model template*



AmeriCorps

Community and Logic Model

- Clearly articulate intervention/activities of members
- Performance measures should connect to your logic model
- A significant portion of points for your application – **24 points**
- If multiple interventions, describe them all in detail within one logic model.



AmeriCorps

PROGRAM
DESIGN

EVIDENCE BASE

Evidence Tier and Evidence Quality

NOFO Evidence Base Criteria

Evidence Tier (12 points)

Based on:

- the relative strength of each applicant's evidence base
- the likelihood that the proposed **intervention** will lead to outcomes identified in the logic model

Evidence Quality (8 points)

Based on:

- the quality of the applicant's evidence
- the extent to which **the evidence supports** the proposed program design
- exact evidence quality criteria depend on evidence tier

Reference:

- *NOFO*
- *Mandatory Supplemental-*

Evidence Base

AmeriCorps values and funds programs at all points along the evidence continuum and expects programs to progress along the evidence continuum over time.

New applicants, do not be deterred from applying for funding due to their current evidence level.



AmeriCorps

Evidence

Evidence in AmeriCorps Grant Applications

Proposed service activities (interventions) must be supported by evidence.

Evidence-informed:

- Uses available knowledge, research, and evaluation to guide program design/implementation
- Specific intervention described in application has not been rigorously evaluated

Evidence-based:

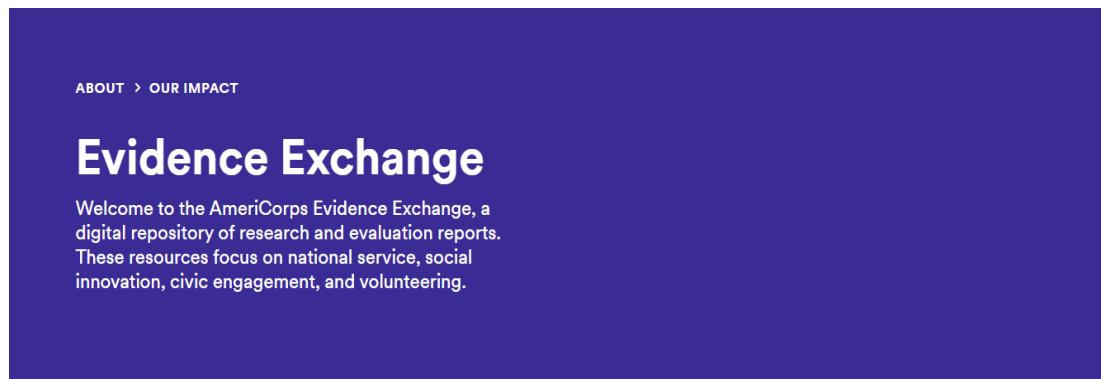
- Intervention described in application has been rigorously evaluated and demonstrated positive results

Reference:

- *NOFO*
- *Mandatory Supplemental*

Evidence Resource

Utilize the reports from the [AmeriCorps Evidence Exchange](#) on programs assessed as having Moderate or Strong evidence to scale, replicate, or adapt the intervention



The AmeriCorps Evidence Exchange is a repository of research and evaluation reports funded through AmeriCorps resources. The reports contained in this repository are intended to:

- Help deepen the agency's understanding of the most effective interventions it has funded to date;
- Assess effectiveness and efficiency of National Service Programs; and
- Broaden foundational research on national service, volunteering and civic engagement.

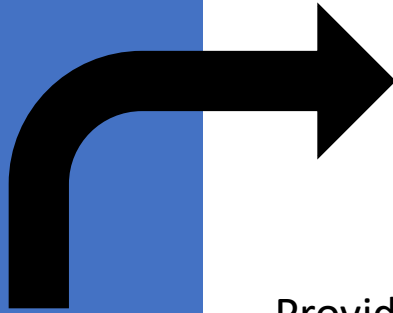
The Evidence Exchange is structured with three filters. In the coming fiscal year, the repository will be updated to allow for improved user experience. Until then, to maximize your searchability, please utilize the [AmeriCorps Evidence Exchange Meta-Data Glossary](#) for keyword searching by "tags" assigned and contained for each report.

Reference:

<https://americorps.gov/about/our-impact/evidence-exchange>



Evidence Tier



Preliminary
Moderate
Strong

These descriptions need to be entered in the application narrative itself for each tier type:

See the evidence tiers noted in the [Mandatory Supplemental Information](#) document.

Provide a narrative that:

- (1.) summarizes the study design and key findings of any outcome or impact evaluation reports that are submitted.
- (2.) describes any other evidence that supports their program, including past performance measure data and/or other research studies.

The intervention evaluated in the submitted report must match the intervention proposed in the application.

Reference:

- *NOFO*
- *Mandatory Supplemental*

Evidence Tier

NOTE: If your application is informed by evidence but is not actually replicating the intervention described in the evidence, DO NOT submit any reports or studies as attachments.

Reports that are not of the same intervention described in the application will not be reviewed or receive any points.

Evidence Tier does not determine funding, it provides an opportunity to support your proposed intervention(s) as strongly as possible.

Applicants should provide citations for the studies they describe.

Reference:

- *NOFO*
- *Mandatory Supplemental*

Evidence Quality

Evidence Quality (8 points)

Based on:

- the quality of the applicant's evidence
- the extent to which **the evidence supports** the proposed program design
- exact evidence quality criteria depend on evidence tier

Evidence Quality Criteria assessed as:

Pre-preliminary

Preliminary

Moderate

Strong

Submitting Evaluation Reports/Studies

Who should submit reports or studies?

- Any applicant wishing to be considered for Preliminary, Moderate or Strong evidence → Submit up to 2 reports/studies (or 3 if evaluation report required)
- Any applicant required to submit an evaluation report to meet evaluation requirements → Submit evaluation report

Required evaluation report can be submitted in addition to the 2 other studies (up to 3 total)

Reports or studies submitted for evidence base consideration **MUST** be of the **same intervention** proposed in the application

Reference:

- *NOFO*
- *Mandatory Supplemental*

Recorded Webinar

**REVIEW THE AMERICORPS WEBINAR FOR ADDITIONAL
INFORMATION ON THIS TOPIC**

FY2025 AmeriCorps State and National: Best Practices in Demonstrating Evidence

During this webinar, AmeriCorps staff share how to support a proposed program design with relevant high-quality data, studies, and/or evaluation reports.

- [Watch the Recording](#)
- [Slide Deck](#)

Reference:

- *NOFO*
- *Mandatory Supplemental*





AmeriCorps

PROGRAM
DESIGN

NOTICE PRIORITY

Notice Priority

Georgia Serves Funding Priorities

- Educators in Rural Communities
- Homelessness
- Human Sex Trafficking
- Rural Communities

To receive priority consideration, applicants must show that the priority area is a significant part of the program focus and intended outcomes.

Reference:

- *NOFO*
- *Georgia Notice of Funding Specifics*
- *Mandatory Supplemental*





AmeriCorps

PROGRAM
DESIGN

MEMBER EXPERIENCE

Member Experience

- The applicant details how AmeriCorps members will be **provided leadership and skill development opportunities.** (e.g., workforce pathways, increasing levels of responsibility and leadership roles for members).
- The applicant details how the program will provide AmeriCorps members with **high-quality orientation to the community.**



Reference:

- *NOFO*
- *Application Instructions*

PERFORMANCE MEASURES



Performance Measures

Your goal is to create **high-quality** performance measures that align with your program design and meet AmeriCorps requirements.

Outputs: Amount of service provided (people served, products created, or programs developed)

Outcomes: Changes or benefits that occur as the result of the intervention or activities

These performance measures:

- Can reflect changes in individuals, organizations, communities, or the environment
- Show the changes in attitudes/beliefs, knowledge/skills, behavior, or conditions
- Must be logically connected to your intervention and be aligned with your outputs



CNCS Performance Measure Requirements

- At least one **aligned** Performance Measure (PM) connected to your **primary intervention**.

PAIR: OUTPUT statement + OUTCOME statement

Community impact, not member-focused

- Use National Performance Measures (NPM) and/or Applicant-determined Measures
- PM should connect to your logic model.
- Performance Measures should reflect significant activities in the applicant's intervention. PMs do not have to be created to capture all AmeriCorps Member activities

References:

- *Application Instructions*
- *PM Instructions*



AmeriCorps

GCSV Performance Measure Requirement

IF FUNDED, programs will be required to report on the following two **GA Specific Performance Measures**:

1. Volunteer Generation

- (Output): Number of volunteers generated to meet program and community needs.

[Target # = *At least five volunteers per MSY awarded will be recruited.*]

2. CPR/First Aid Training

- (Output): Number of Members receiving CPR/First Aid training.

[Target # = *75% of members will receive training.*]

Please, do not enter these GA-specific PMS in eGrants!



AmeriCorps

Types of Performance Measures

Reference:

- *Performance Measure Instructions*
- *Mandatory Supplemental*
- *Public Health AmeriCorps Performance Measures Instructions*

CNCS National Performance Measures (NPM)

- Reflect CNCS Strategic Plan and programming priorities
- Allow for consistent terms, definitions, and approaches to measurement (“speaking the same language”)
- Available for all the AmeriCorps focus areas.
- See the *ASN Performance Measures Instructions* document.

Applicant-determined Performance Measures

- Intended for programs whose interventions, outputs, or outcomes do not fit under existing National Performance Measures.
- See the *Applicant-Determined Performance Measure Supplement*.

Public Health AmeriCorps (PHA) applicants

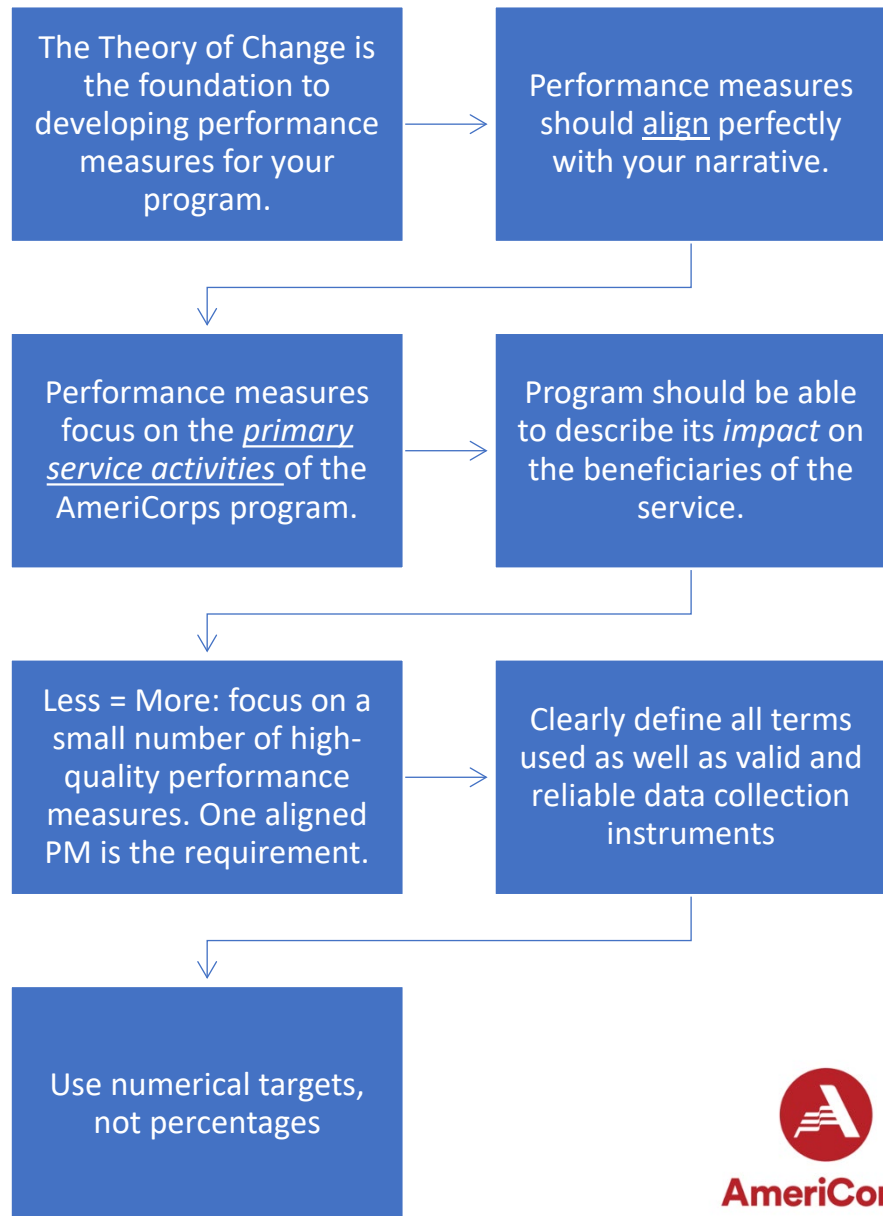
- Please note that there are separate performance measures applicants must select.
- See the *PHA Performance Measure Instructions* for further guidance.

Planning Grant applicants

- Please note that you will not be entering “actual” PMs.
- See the *Planning PM + Logic Model Instructions* for detailed guidance.



Tips: Performance Measure Design



Recorded webinar

•**FY 2025 AmeriCorps State and National Best Practices for Performance Measures Video:** Overview of Performance Measures, performance measure requirements, and best practices for developing performance measures.

- [Recording](#) (*added September 18, 2024*)

•**FY 2025 Best Practices for Performance Measures Live Q&A:** Join AmeriCorps State and National staff for live Q&A about best practices for developing performance measures.

- **September 25, 2024, 1:00 p.m. ET**
- [Recording](#)

Reference:

- *NOFO*
- *Mandatory Supplemental-*



AmeriCorps

EVALUATION REQUIREMENTS

Evaluation Requirements

In summary:

<i>If you are applying for...</i>	<i>The following must be submitted with your application:</i>
Your <i>first</i> three-year competitive AmeriCorps grant	You are not required to submit an evaluation plan or conduct an evaluation during the three-year period. However, if you are planning to re-compete for funding, it is highly recommended that you begin the evaluation planning process during the first three-year grant period. You are also required to submit a data collection plan as described in the “Data Collection Plans” section of these FAQs.
Your <i>second</i> three-year competitive AmeriCorps grant	You must submit an evaluation plan and are required to complete the evaluation described in the approved plan during the second three-year grant period.
Your <i>third</i> three-year competitive AmeriCorps grant	You are required to submit: 1) a report detailing the results of the evaluation conducted during the second grant period; and 2) an evaluation plan for the third three-year grant period that will build on the results of the evaluation from the second three-year grant period.
A competitive AmeriCorps grant beyond your third three-year grant award	You must continue to submit an evaluation plan for each successive three-year grant period and a report with findings from the evaluation conducted in the previous grant period.

- **National Direct and State Competitive (\$500K+)** must arrange for an independent evaluation of your program, and you must submit the evaluation with your application
- **National Direct and State Competitive (less than \$500K)** must conduct an internal evaluation of your program, and you must submit the evaluation with your application

Reference:

- NOFO

Evaluation Plan Requirements

All applicants should enter “N/A” in the “Evaluation Summary or Plan” field of the Narrative. Any other text entered in this field will not be reviewed.

Applicants should use the evaluation plan template found on the Notice webpage to craft their evaluation plans. The template document provides detailed information about the AmeriCorps evaluation requirements (45 CFR 2522.700 -.710) and specifies the information that must be provided for the evaluation plan to be approved by AmeriCorps.

The **evaluation plan template** will not be scored and will not be reviewed until after funding decisions have been made.

Reference:

- *NOFO*
- *Mandatory Supplemental*



Questions??



AmeriCorps
Georgia

Zaneta Ivery
Senior Grants Specialist
Zaneta.Ivery@dca.ga.gov
404.679.0562

For application questions, please email:
AmeriCorpsGA@dca.ga.gov

AmeriCorps and Georgia Serves will invest in existing and new partnerships with non-profit, faith-based, and Tribal organizations, to get things done for America.