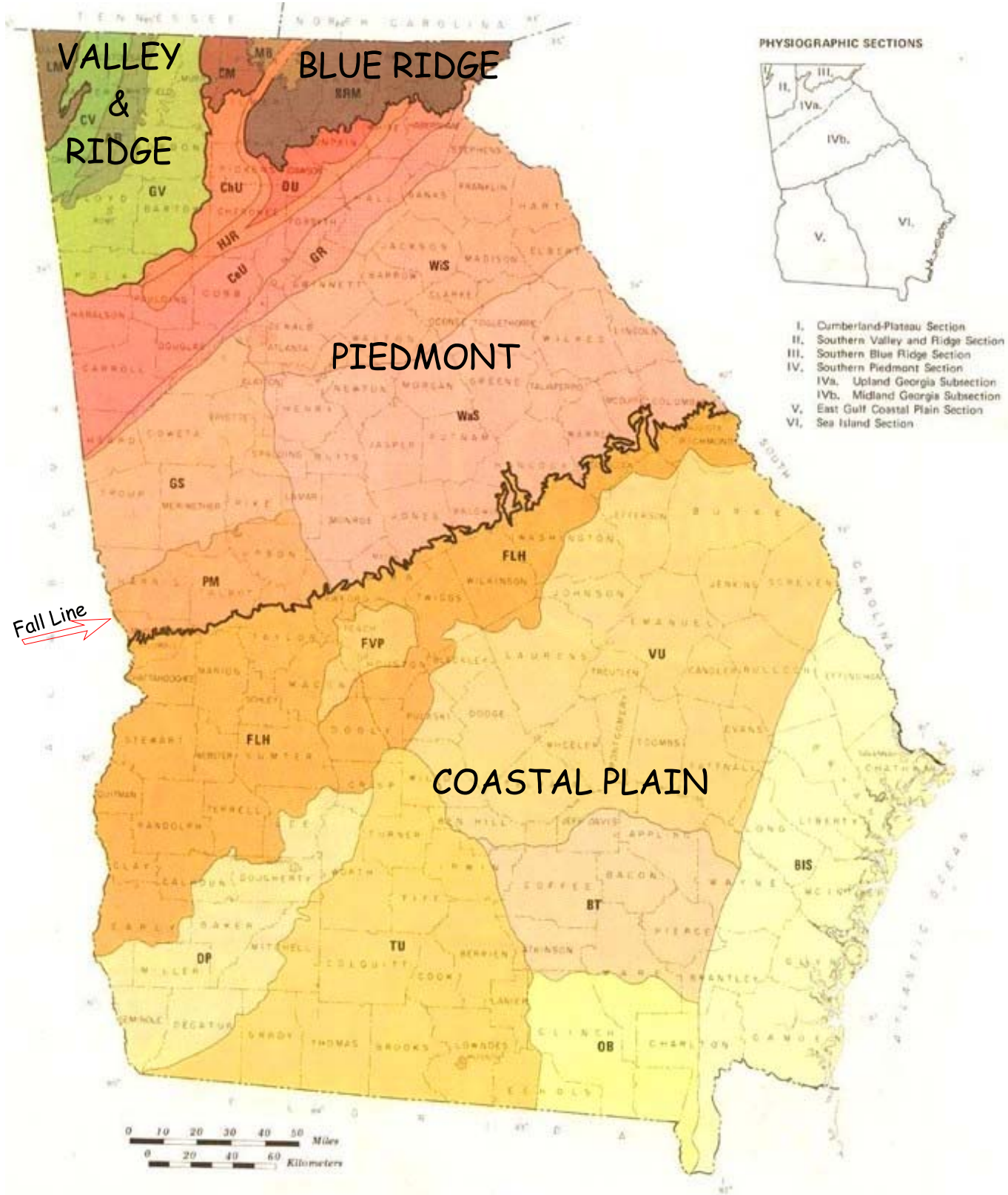


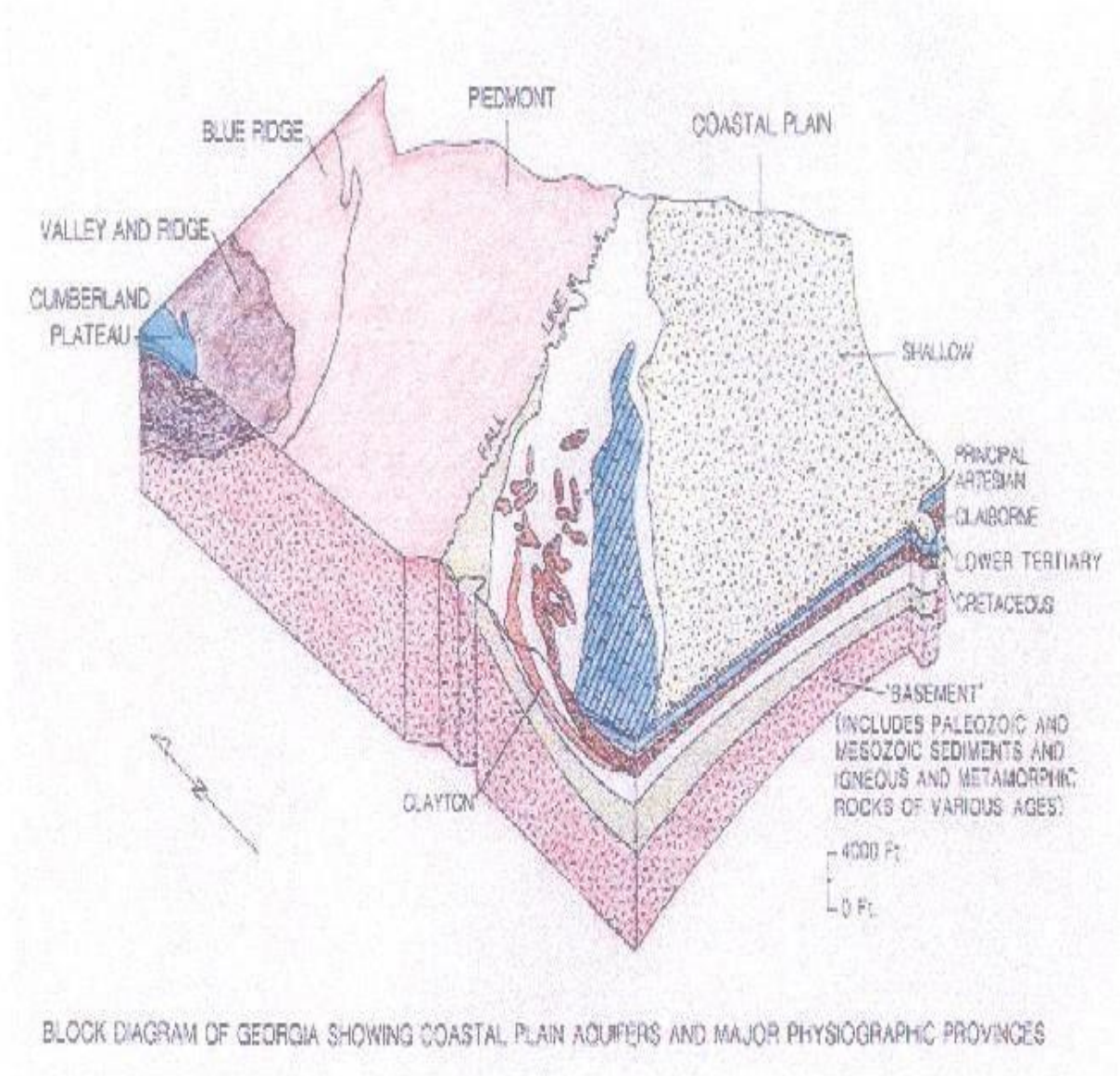
MAP NCR-1

PHYSIOGRAPHIC PROVINCES OF GEORGIA



MAP NCR-2

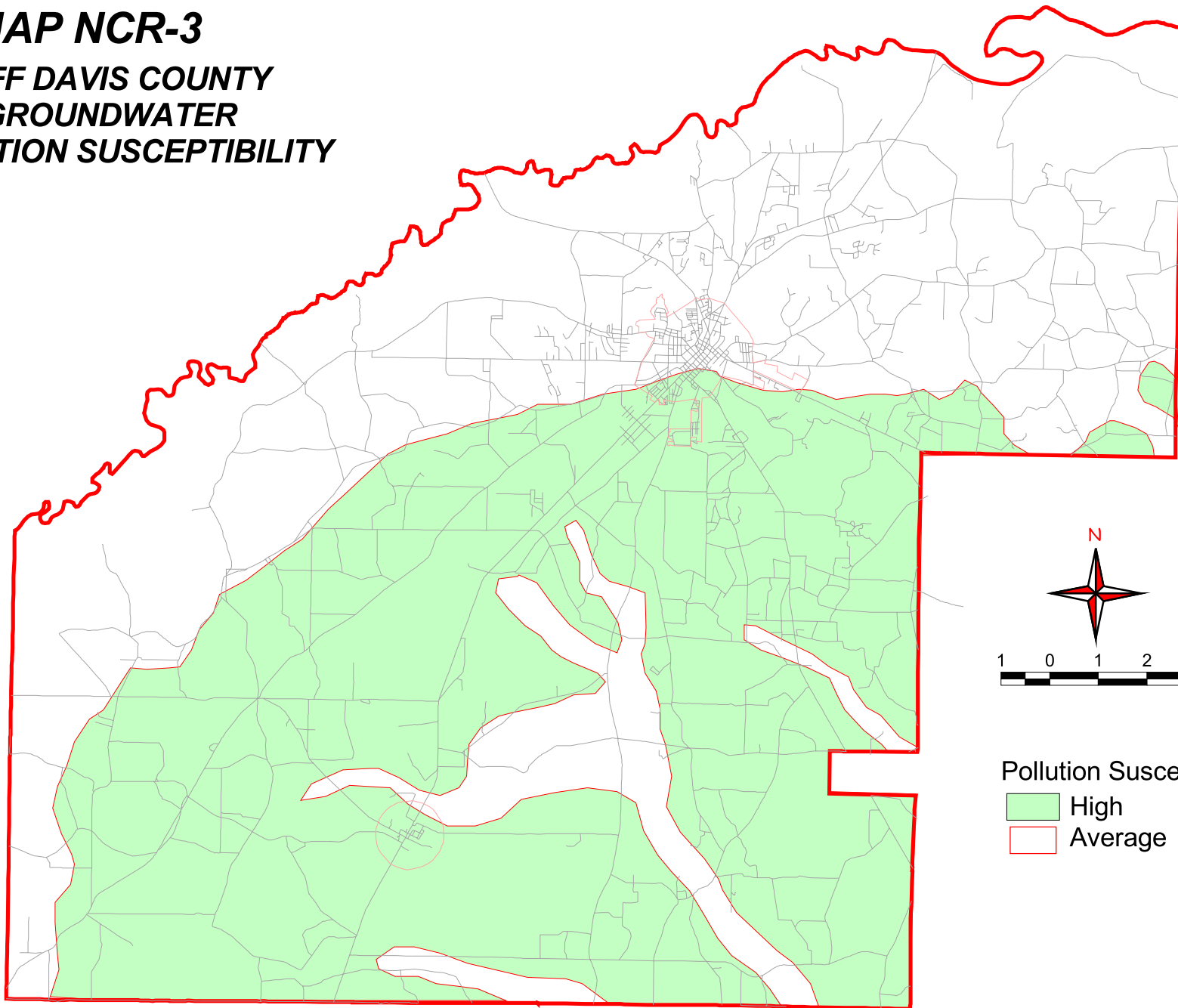
Block Diagram of Georgia



SOURCE: Comprehensive Water Supply Plan, Wayne County
BE&K/Terranext, LLC, 2000
Heart of Georgia Altamaha RDC, 2004

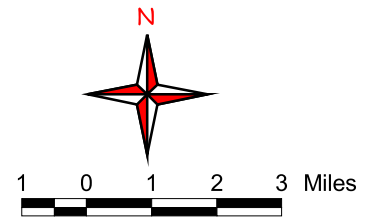
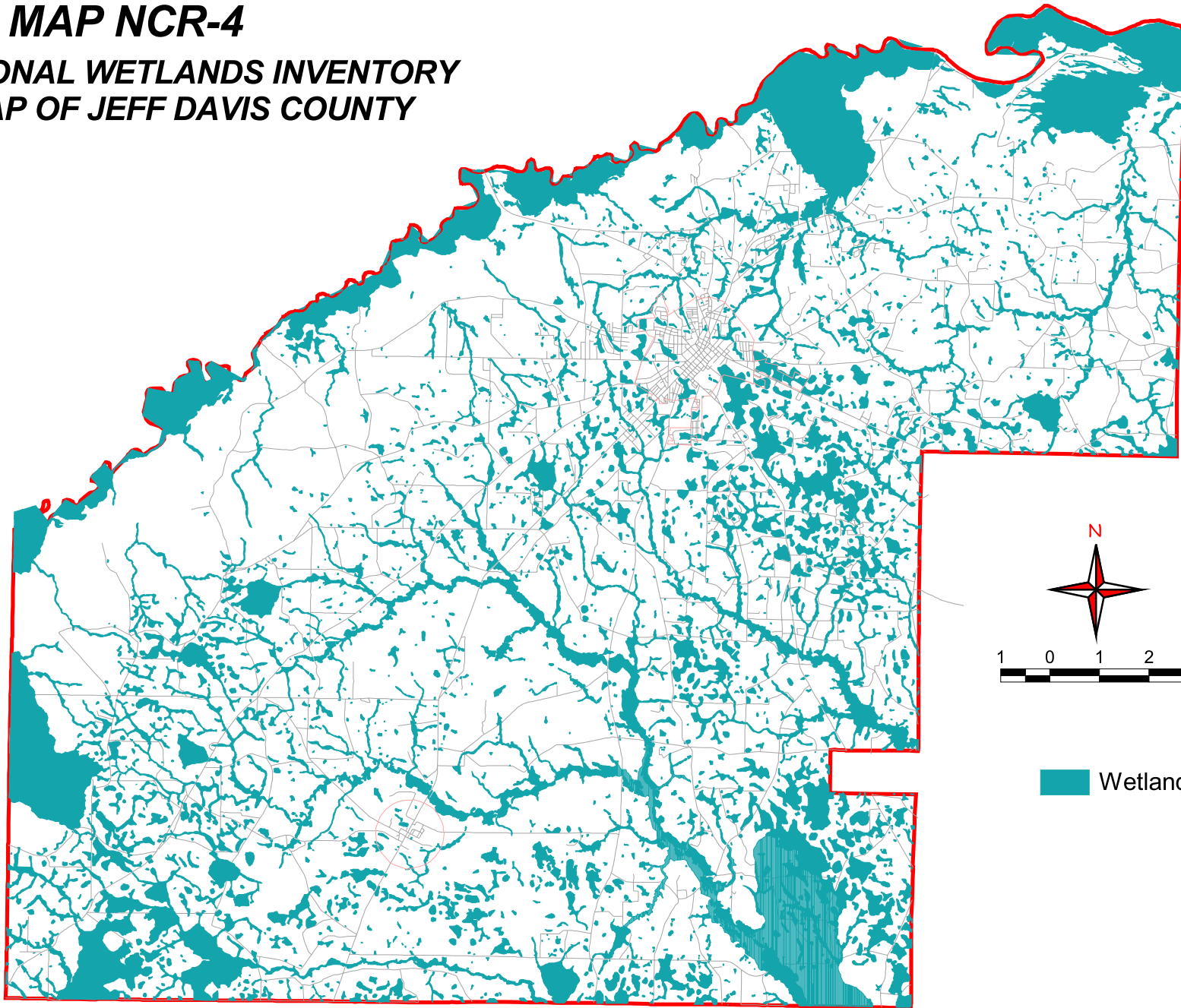
MAP NCR-3

JEFF DAVIS COUNTY GROUNDWATER POLLUTION SUSCEPTIBILITY



SOURCE: <http://planning.rdis.org/mapviews2/client.asp>
Heart of Georgia Altamaha RDC, 2005

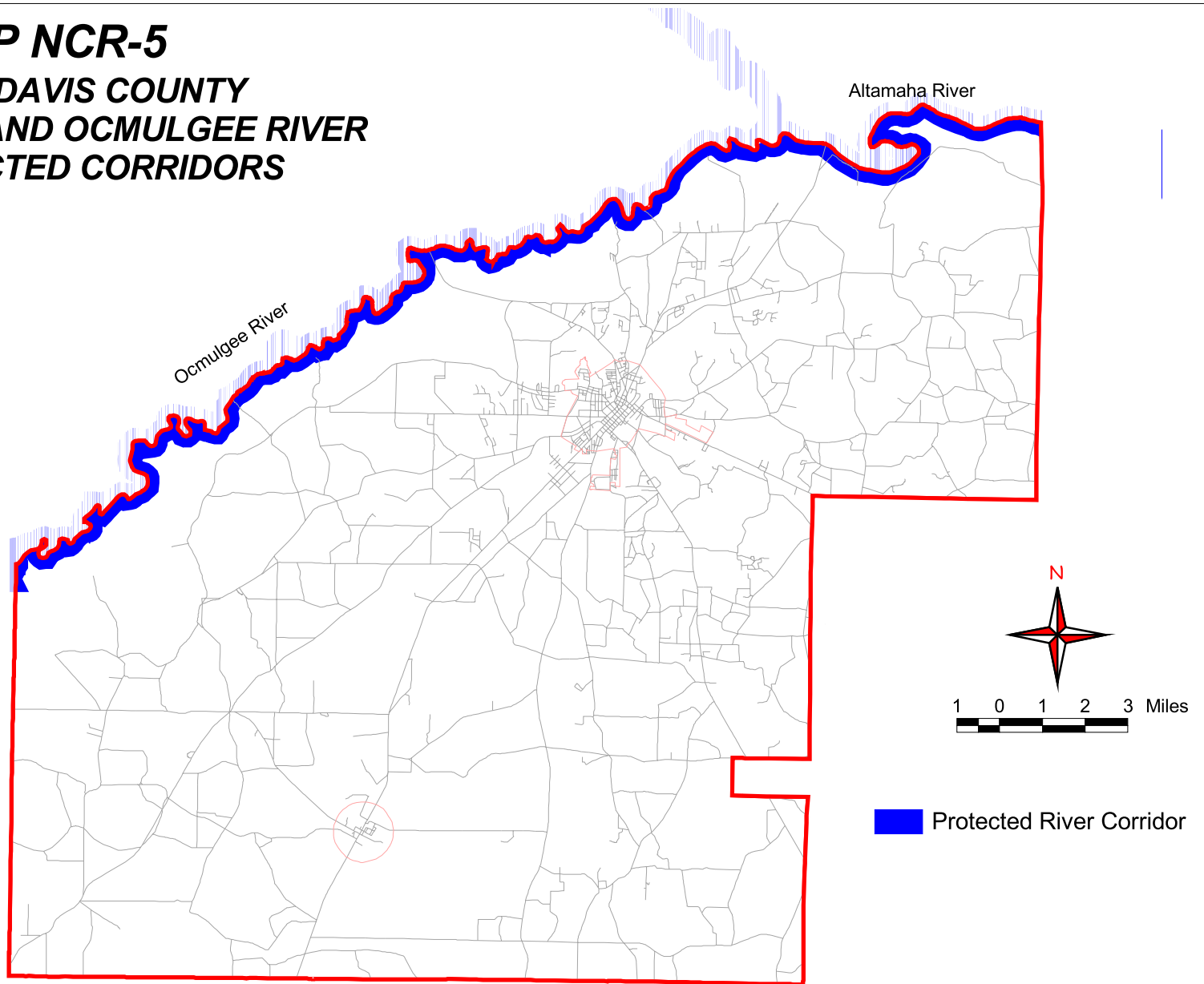
MAP NCR-4
NATIONAL WETLANDS INVENTORY
MAP OF JEFF DAVIS COUNTY



Wetlands

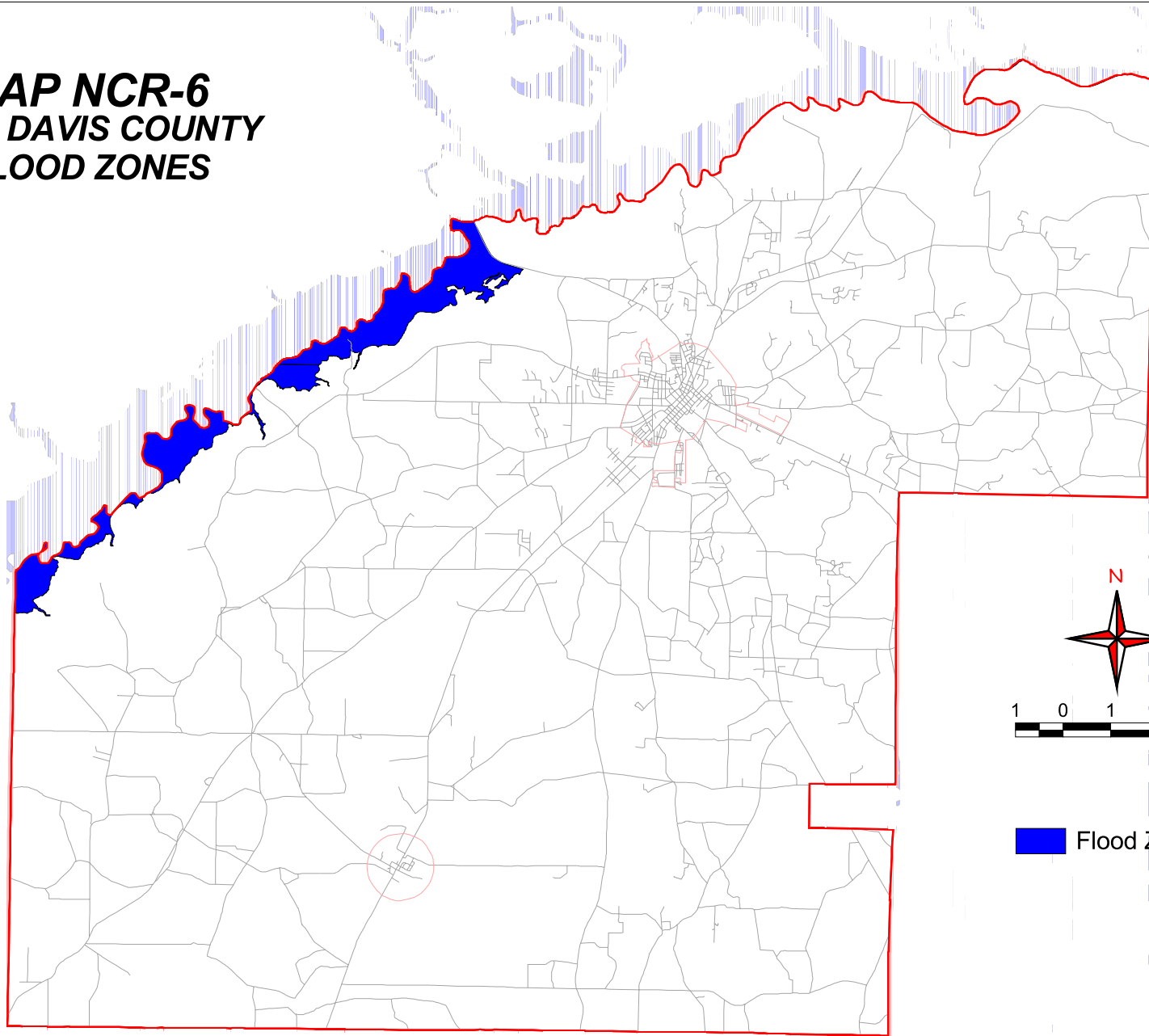
SOURCE: Georgia GIS Data Clearing House
Heart of Georgia Altamaha RDC, 2005

MAP NCR-5
JEFF DAVIS COUNTY
ALTAMAHA AND OCMULGEE RIVER
PROTECTED CORRIDORS




SOURCE: Georgia GIS Data Clearing House
Heart of Georgia Altamaha RDC, 2005

MAP NCR-6 JEFF DAVIS COUNTY FLOOD ZONES

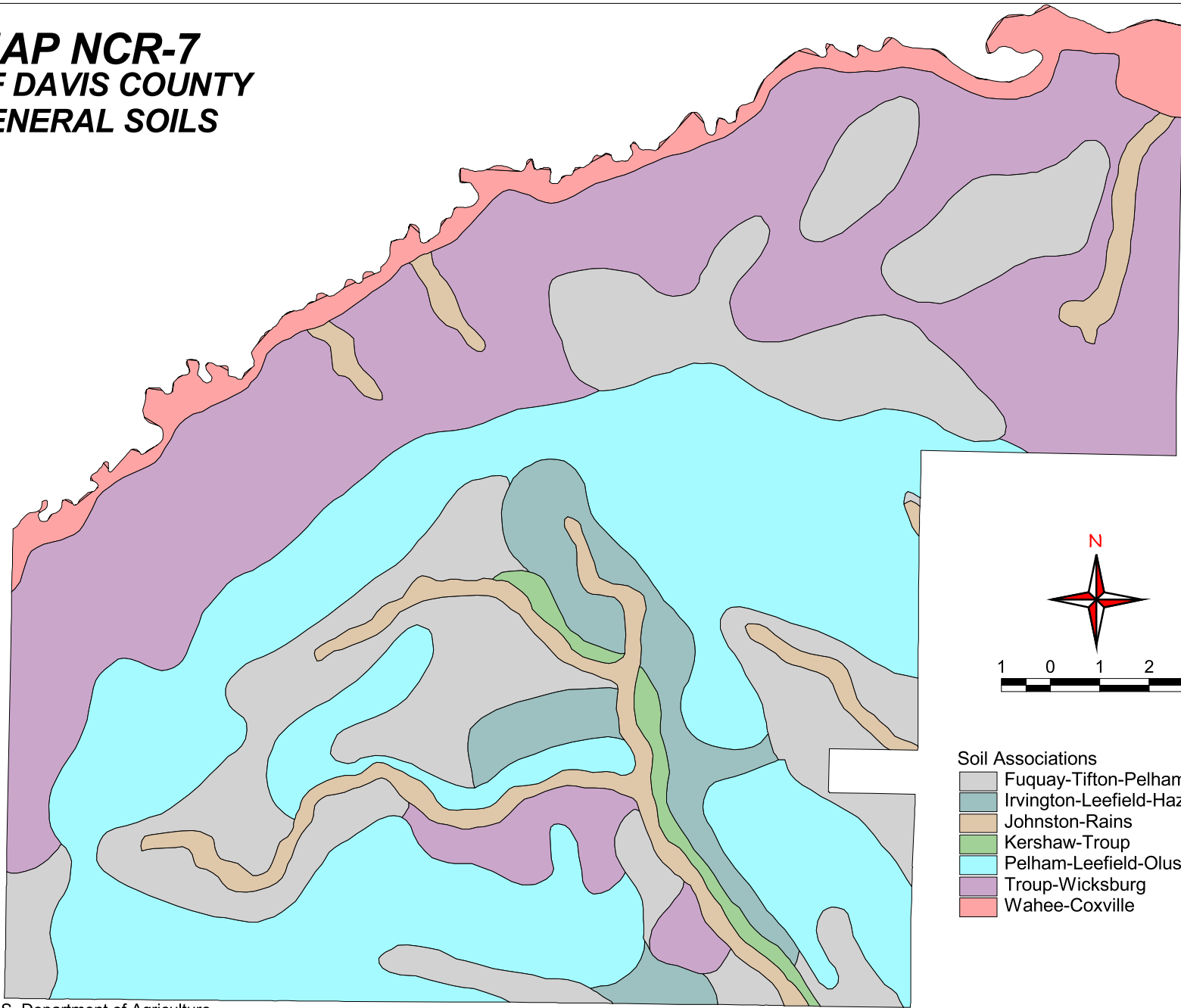


1 0 1 2 3 Miles

 Flood Zones

SOURCE: Georgia GIS Data Clearing House
Heart of Georgia Altamaha RDC, 2005

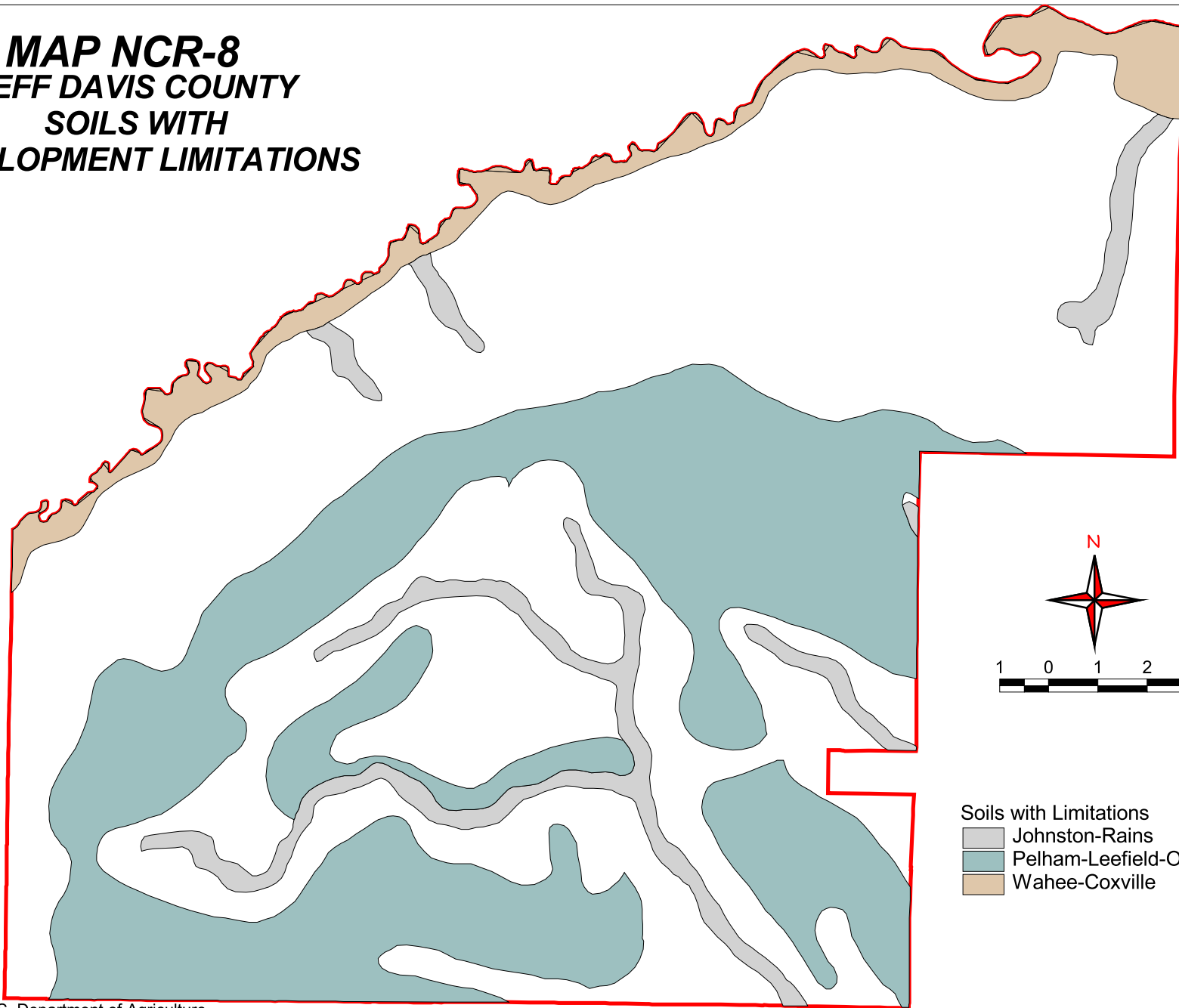
MAP NCR-7 JEFF DAVIS COUNTY GENERAL SOILS



- Soil Associations
- Fuquay-Tifton-Pelham
 - Irvington-Leafield-Hazlehurst
 - Johnston-Rains
 - Kershaw-Troup
 - Pelham-Leafield-Olustee
 - Troup-Wicksburg
 - Wahee-Coxville

SOURCE: U.S. Department of Agriculture
Soil Conservation Service, Soil Survey of Appling and Jeff Davis Counties, 1975 and <http://gis.state.ga.us/clearinghouse/clearinghouse.html>
Heart of Georgia Altamaha RDC, 2005

MAP NCR-8
JEFF DAVIS COUNTY
SOILS WITH
DEVELOPMENT LIMITATIONS

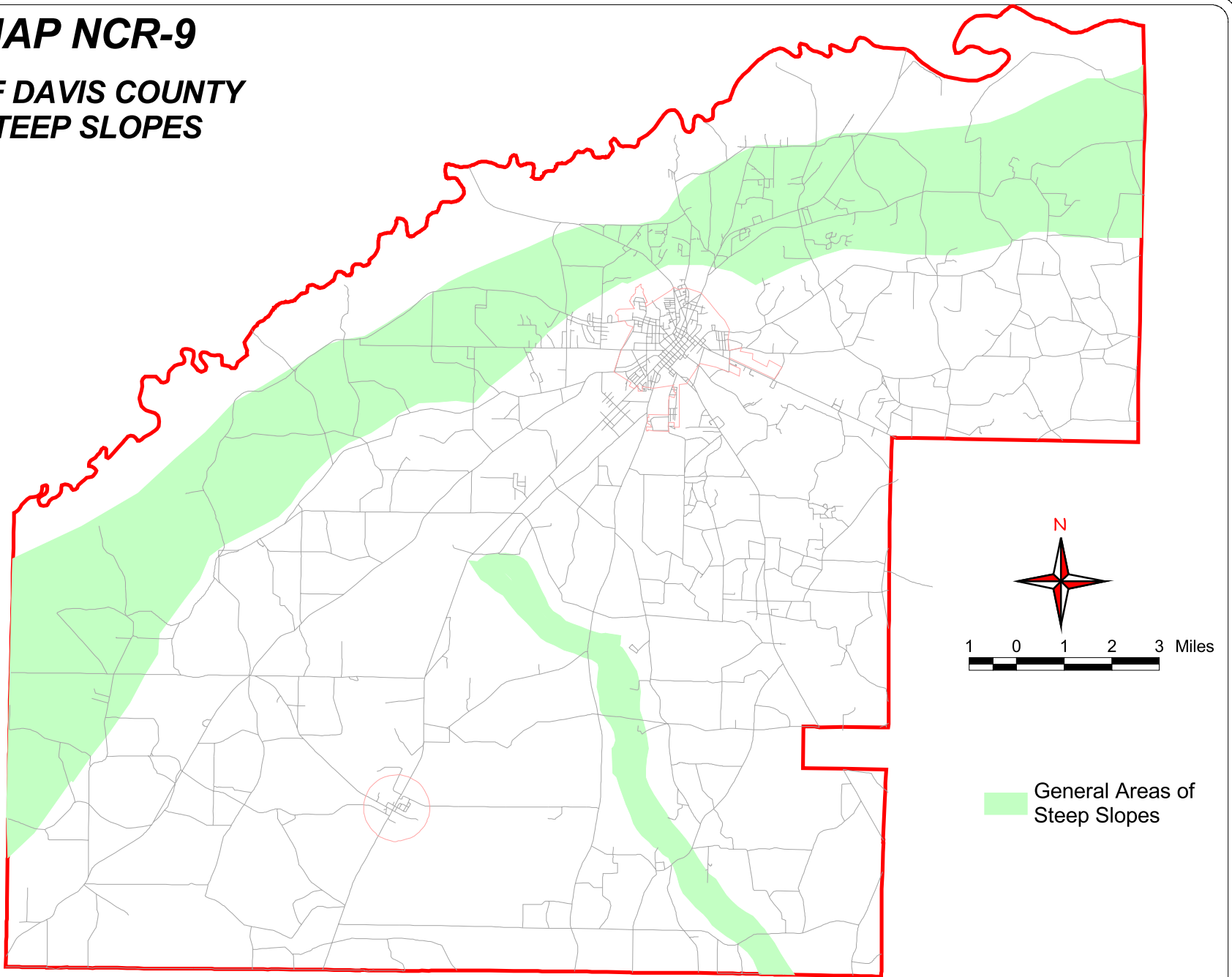


- Soils with Limitations
- Johnston-Rains
 - Pelham-Leefield-Olustee
 - Wahee-Coxville

SOURCE: U.S. Department of Agriculture
Soil Conservation Service, Soil Survey of Appling and Jeff Davis Counties, 1975 and <http://gis.state.ga.us/clearinghouse/clearinghouse.html>
Heart of Georgia Altamaha RDC, 2005

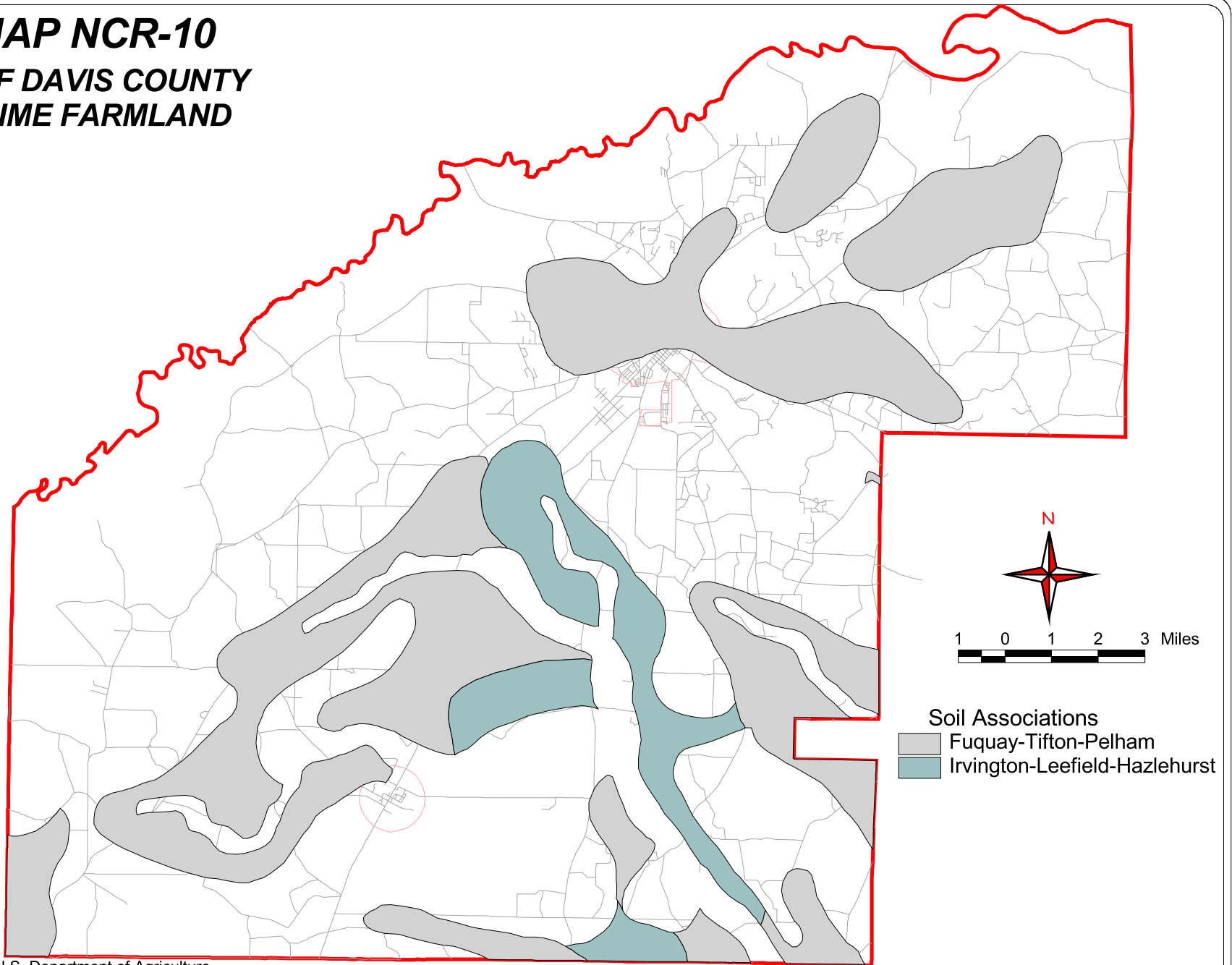
MAP NCR-9

JEFF DAVIS COUNTY STEEP SLOPES



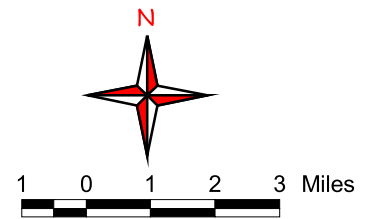
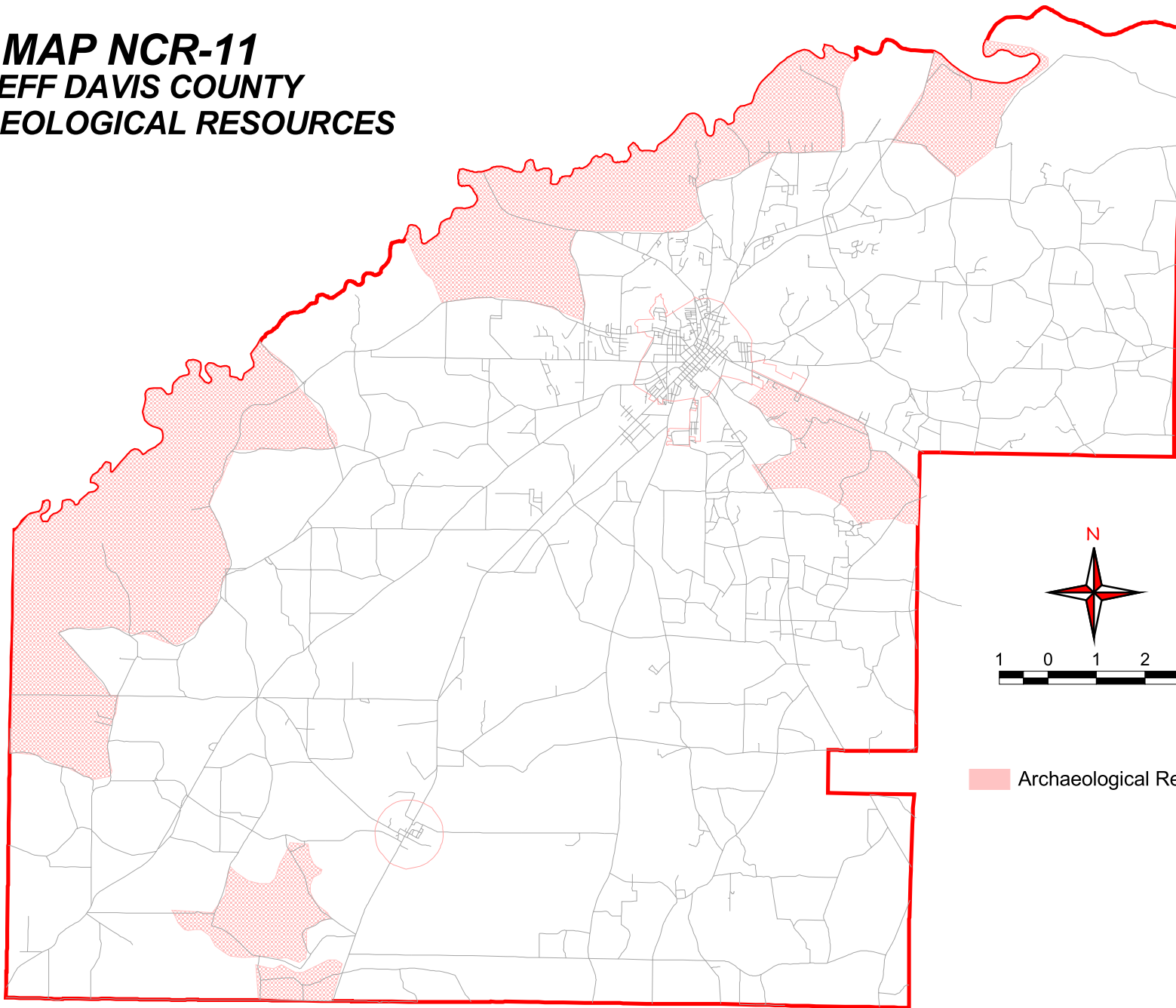
SOURCE: Jeff Davis County Comprehensive Plan Local Coordination Committee, 2005
Heart of Georgia Altamaha RDC, 2005

MAP NCR-10
JEFF DAVIS COUNTY
PRIME FARMLAND



SOURCE: U.S. Department of Agriculture
Soil Conservation Service, Soil Survey of Appling and Jeff Davis Counties, 1975 and <http://gis.state.ga.us/clearinghouse/clearinghouse.html>
Heart of Georgia Altamaha RDC, 2005

MAP NCR-11
JEFF DAVIS COUNTY
ARCHAEOLOGICAL RESOURCES

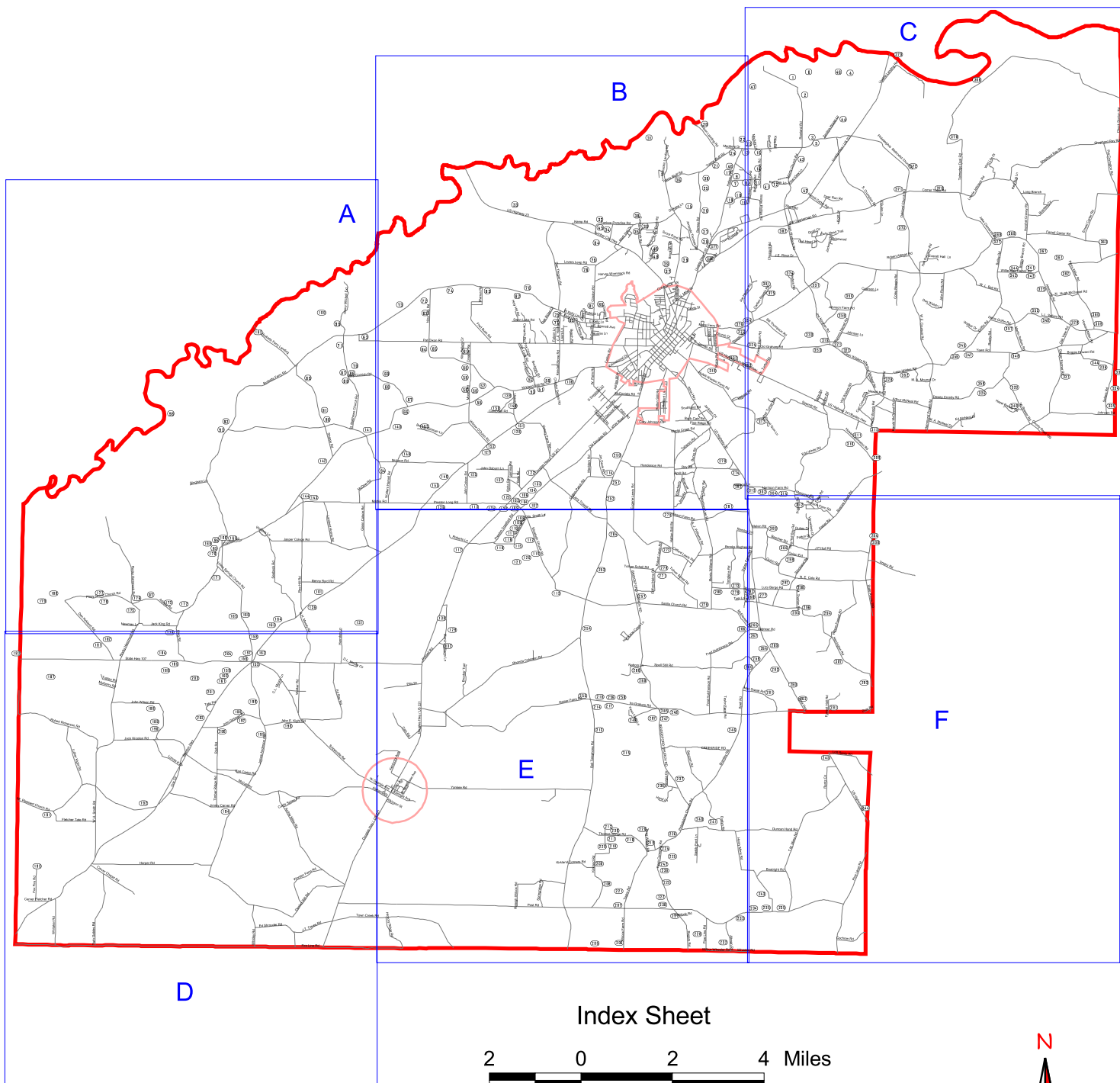


Archaeological Resources

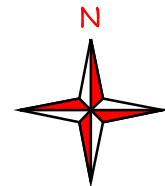
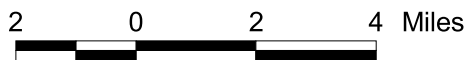
SOURCE: <http://planning.rdis.org/mapviews2/client.asp>
Heart of Georgia Altamaha RDC, 2005

MAP NCR-12

Jeff Davis County Cultural Resources



Index Sheet



See Map Legend Following Map 12-F

LEGEND:

 HISTORIC LOCATIONS

 City Limits

 Roads

 County Boundary

SOURCE: Jeff Davis County Comprehensive Plan
Local Coordination Committee, 2005
Heart of Georgia Altamaha RDC, 2005

MAP NCR-12-A

Jeff Davis County Cultural Resources

0.6 0 0.6 1.2 Miles

LEGEND:

HISTORIC LOCATIONS

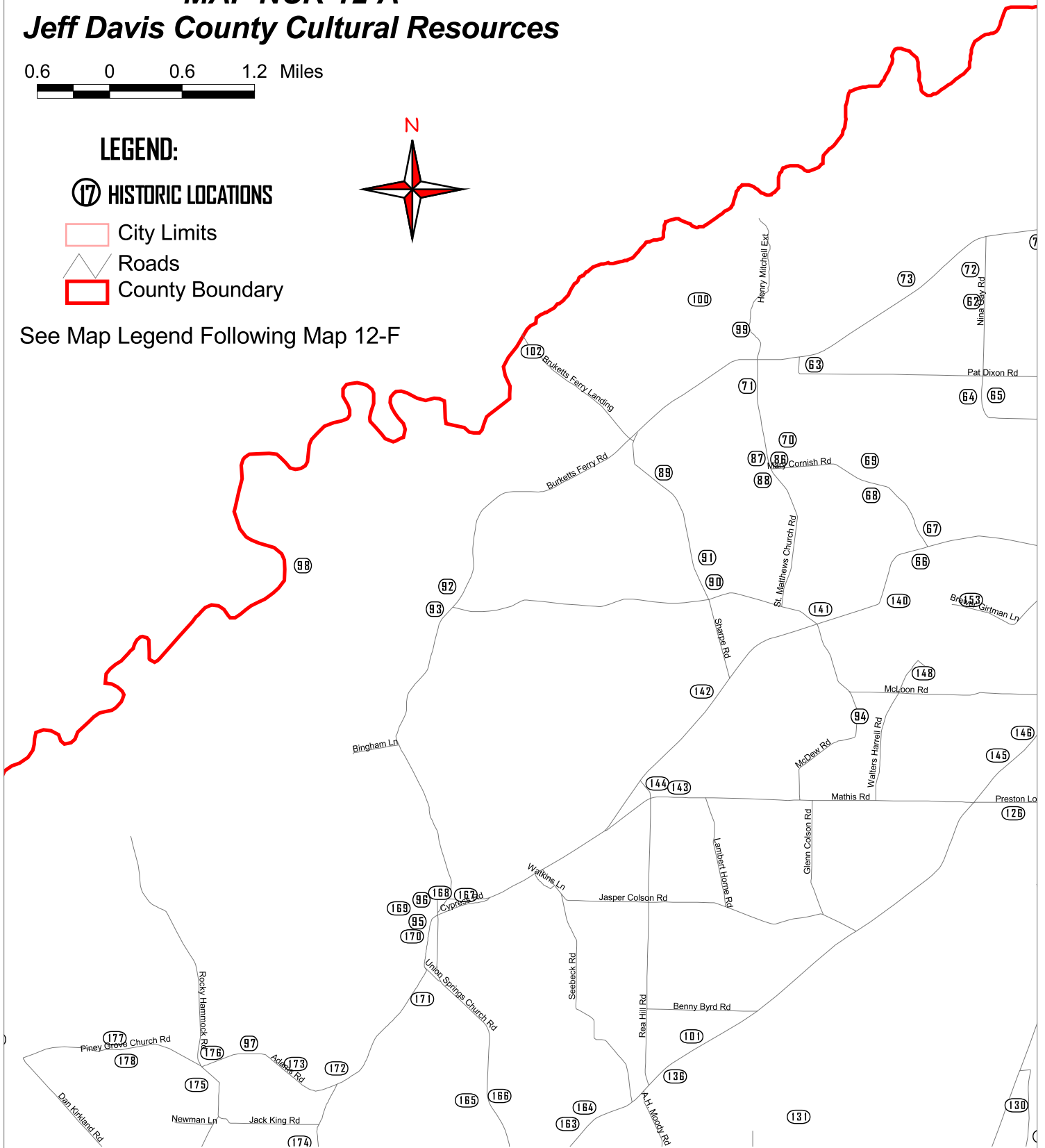
City Limits

Roads

County Boundary



See Map Legend Following Map 12-F



SOURCE: Jeff Davis County Comprehensive Plan
 Local Coordination Committee, 2005
 Heart of Georgia Altamaha RDC, 2005

MAP NCR-12-B

Jeff Davis County Cultural Resources




0.6 0 0.6 1.2 Miles

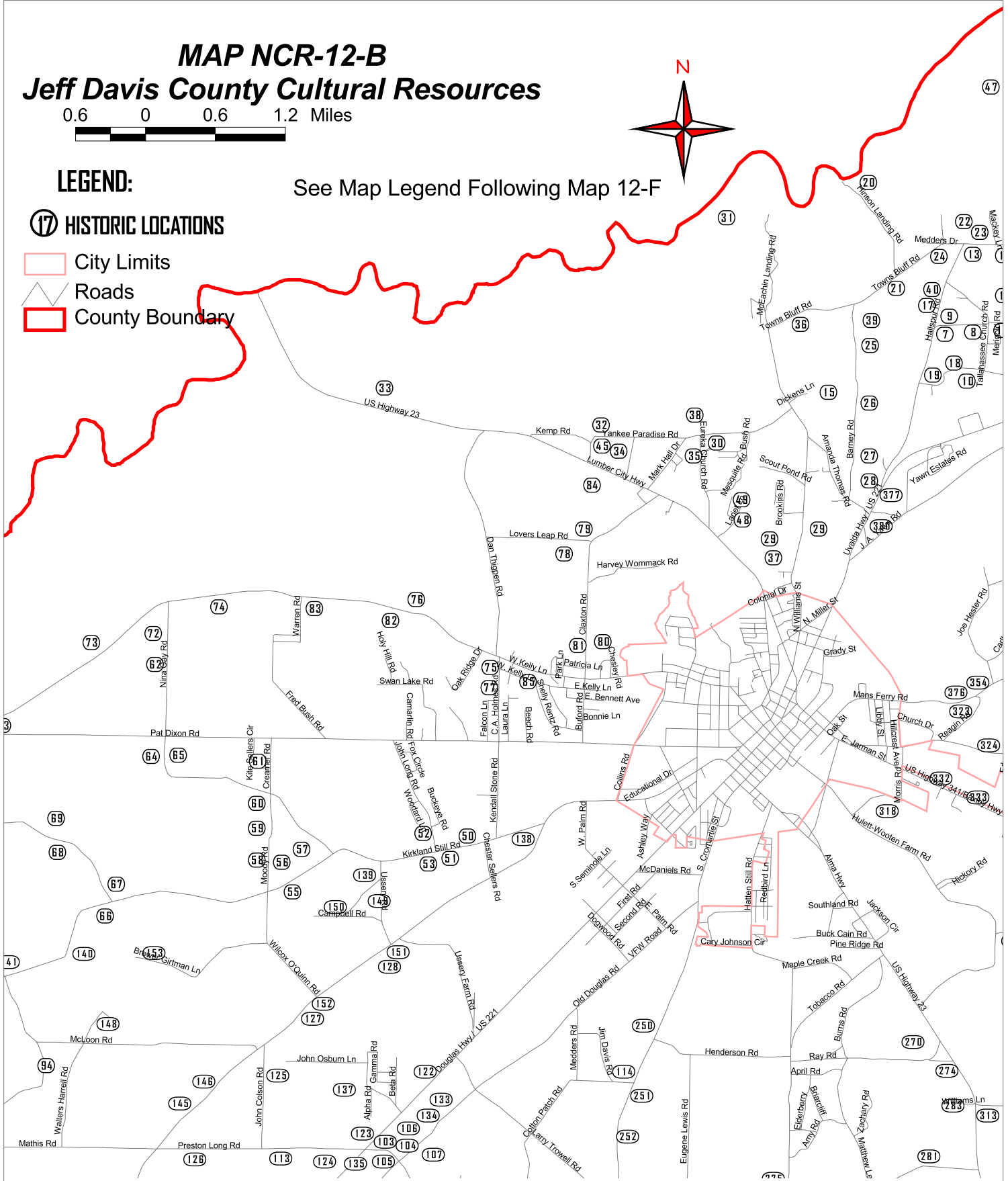


LEGEND:

See Map Legend Following Map 12-F

17 HISTORIC LOCATIONS

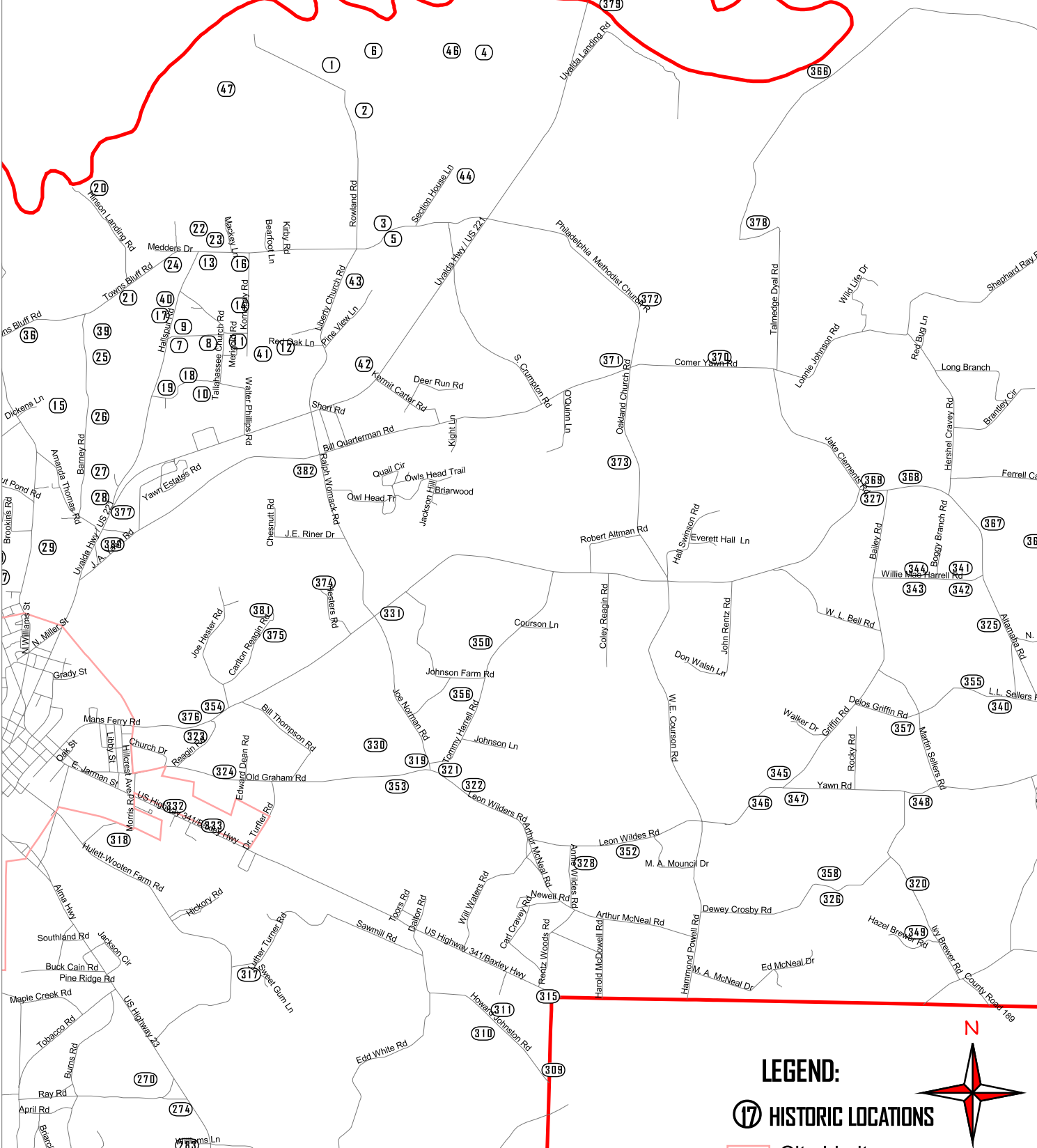
-  City Limits
-  Roads
-  County Boundary



SOURCE: Jeff Davis County Comprehensive Plan
 Local Coordination Committee, 2005
 Heart of Georgia Altamaha RDC, 2005

MAP NCR-12-C


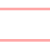


Jeff Davis County Cultural Resources



See Map Legend Following Map 12-F

SOURCE: Jeff Davis County Comprehensive Plan
 Local Coordination Committee, 2005
 Heart of Georgia Altamaha RDC, 2005



- LEGEND:**
-  HISTORIC LOCATIONS
 -  City Limits
 -  Roads
 -  County Boundary





MAP NCR-12-D Jeff Davis County Cultural Resources

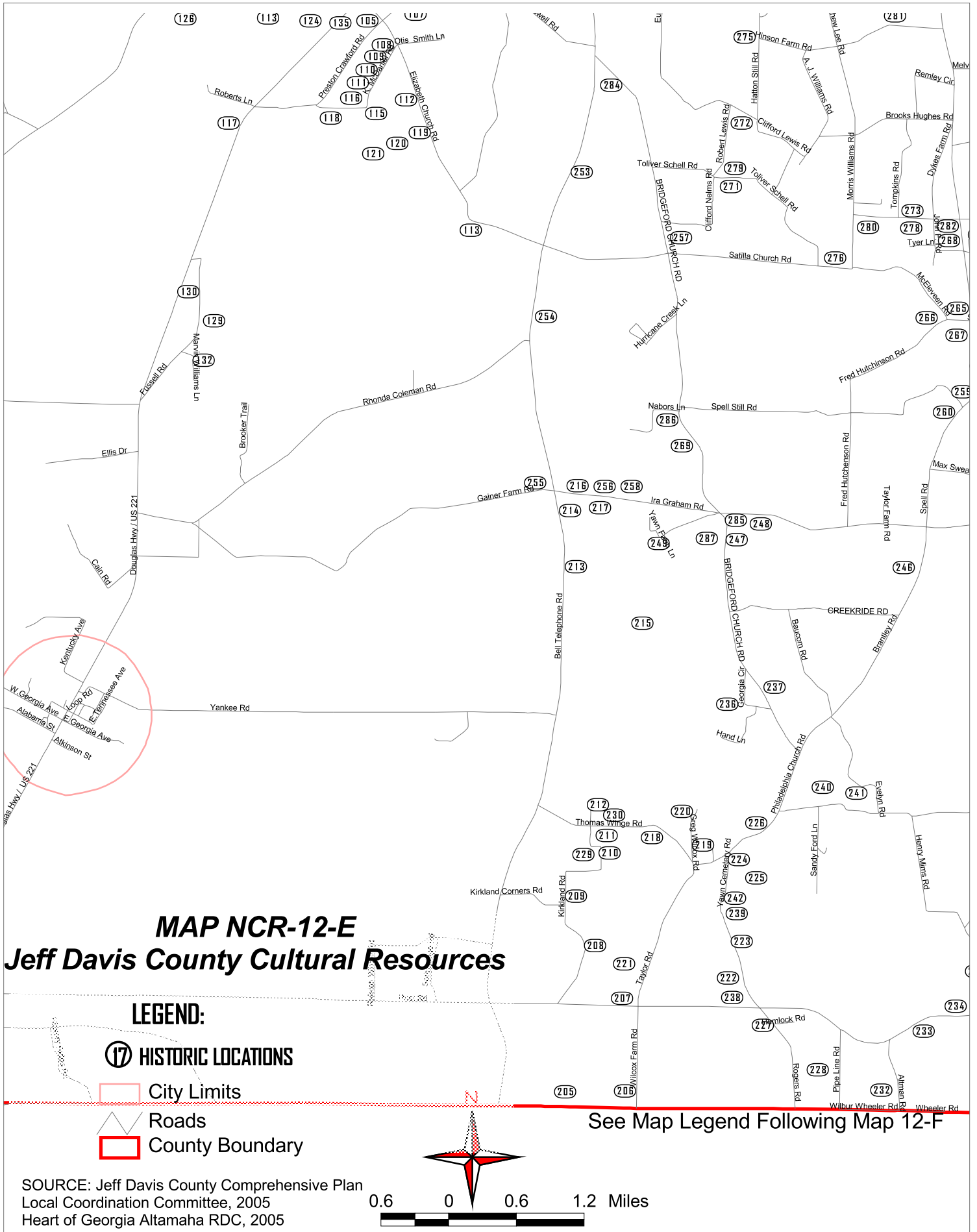
See Map Legend Following Map 12-F



LEGEND:

-  HISTORIC LOCATIONS
-  City Limits
-  Roads
-  County Boundary

SOURCE: Jeff Davis County Comprehensive Plan
Local Coordination Committee, 2005
Heart of Georgia Altamaha RDC, 2005



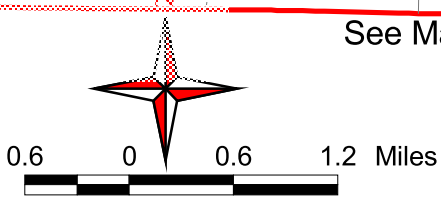
MAP NCR-12-E Jeff Davis County Cultural Resources

LEGEND:

-  HISTORIC LOCATIONS
-  City Limits
-  Roads
-  County Boundary

See Map Legend Following Map 12-F

SOURCE: Jeff Davis County Comprehensive Plan
Local Coordination Committee, 2005
Heart of Georgia Altamaha RDC, 2005



MAP NCR-12-F Jeff Davis County Cultural Resources

0.6 0 0.6 1.2 Miles



LEGEND:

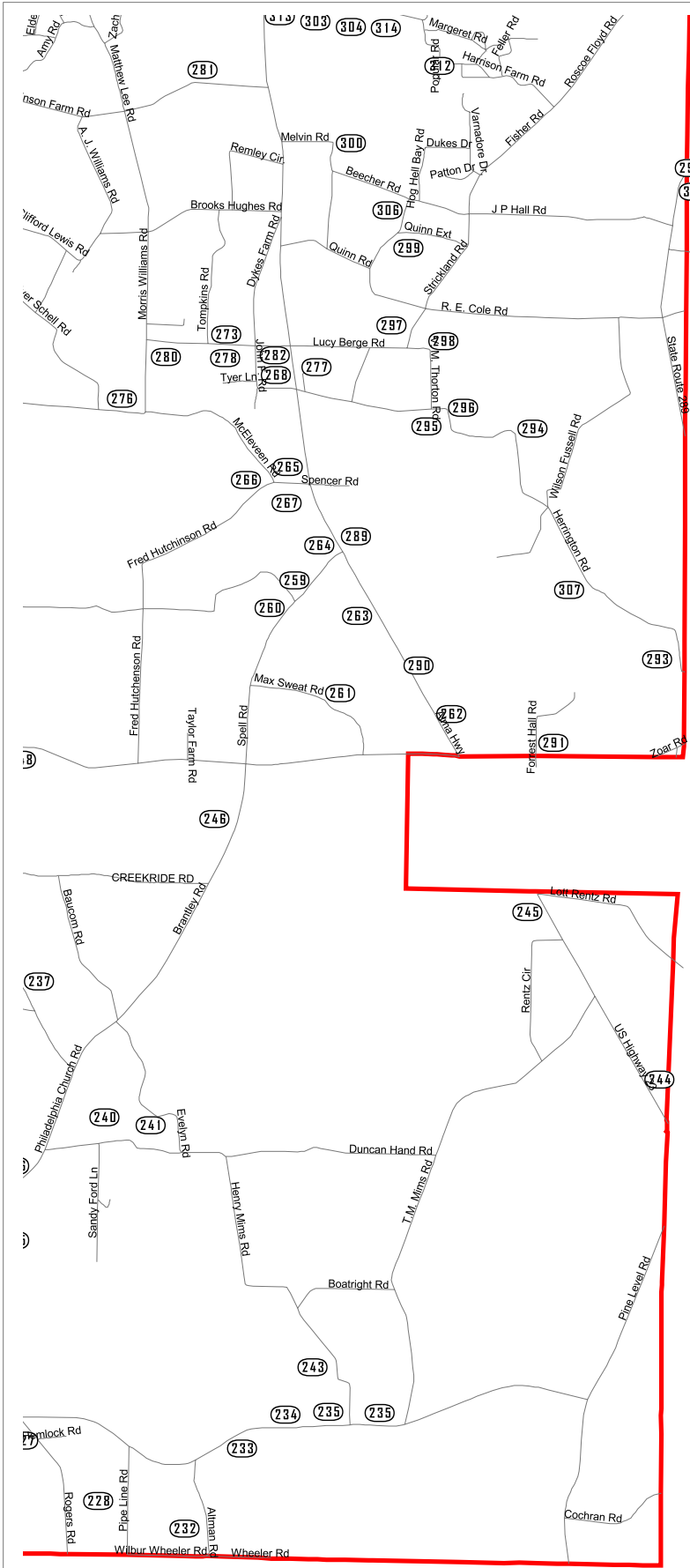
 HISTORIC LOCATIONS

 City Limits

 Roads

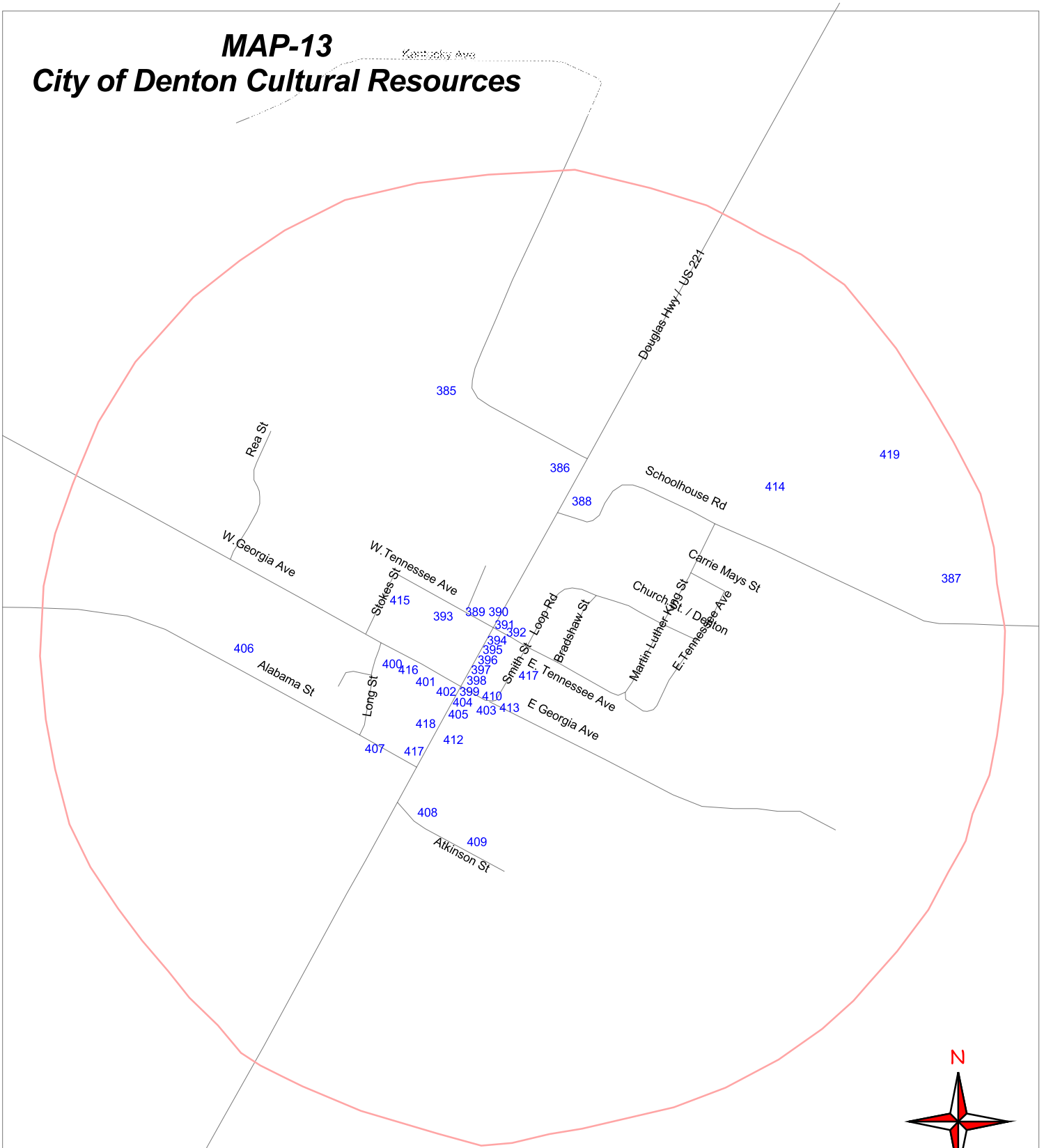
 County Boundary

See Map Legend Following Map 12-F



SOURCE: Jeff Davis County Comprehensive Plan
Local Coordination Committee, 2005
Heart of Georgia Altamaha RDC, 2005




MAP-13 City of Denton Cultural Resources



See Map Legend on Next Page

LEGEND: 500 0 500 1000 Feet

99 HISTORIC LOCATIONS

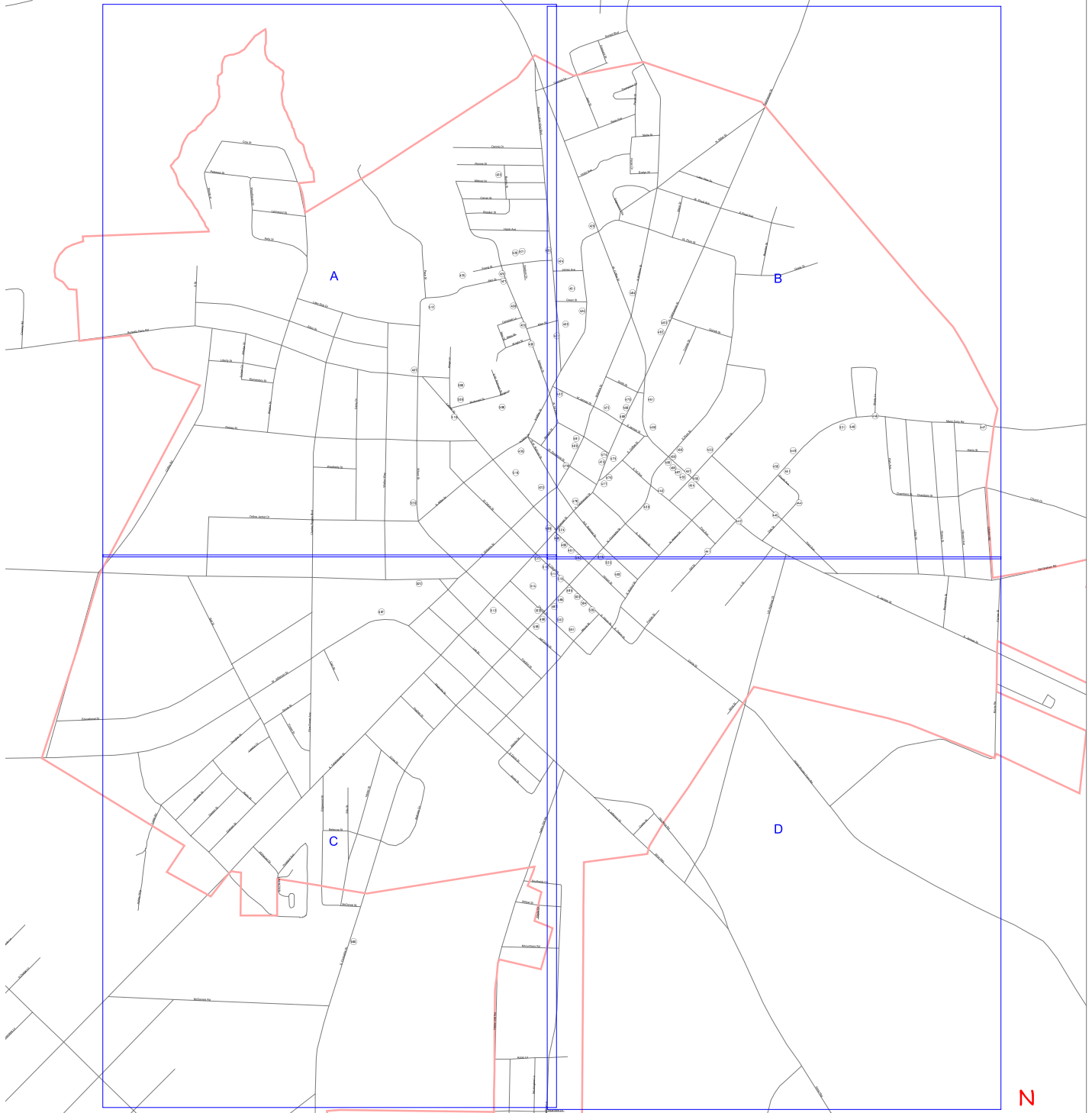
-  City Limits
-  Roads
-  County Boundary



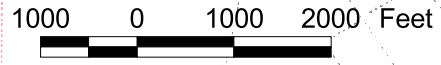
SOURCE: Jeff Davis County Comprehensive Plan
Local Coordination Committee, 2005
Heart of Georgia Altamaha RDC, 2005

MAP NCR-14

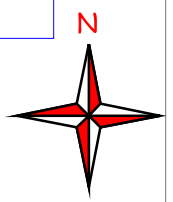
City of Hazlehurst Cultural Resources



LEGEND:

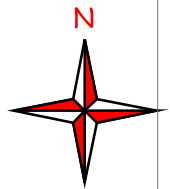


- HISTORIC LOCATIONS
- City Limits
- Roads
- County Boundary



See Map Legend Following Map 14-D
Index Sheet
SOURCE: Jeff Davis County Comprehensive Plan
Local Coordination Committee, 2005
Heart of Georgia Altamaha RDC, 2005

MAP NCR-14-B City of Hazlehurst Cultural Resources



LEGEND:

 HISTORIC LOCATIONS

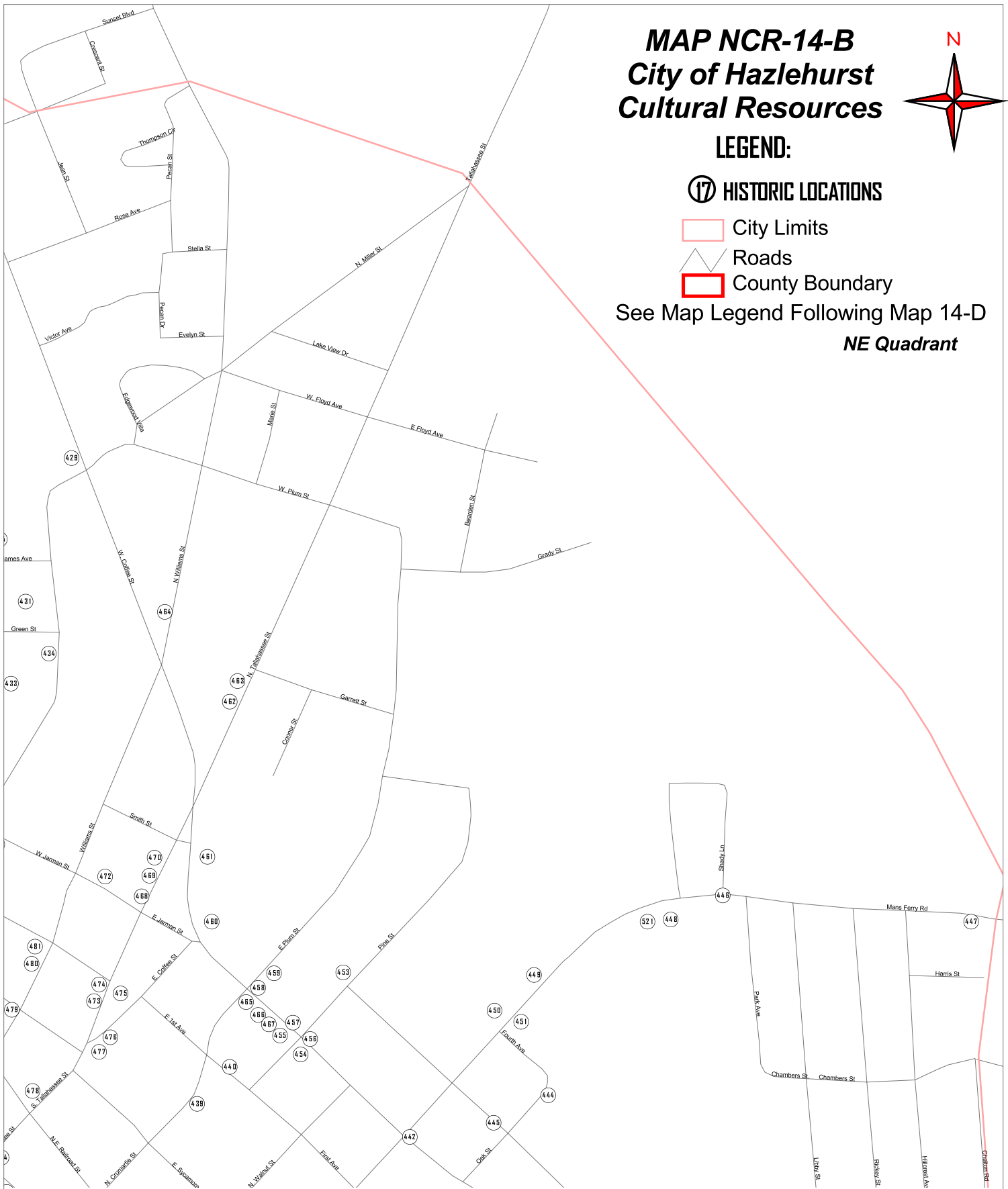
 City Limits

 Roads

 County Boundary

See Map Legend Following Map 14-D

NE Quadrant



SOURCE: Jeff Davis County Comprehensive Plan
Local Coordination Committee, 2005
Heart of Georgia Altamaha RDC, 2005

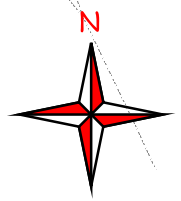
400 0 400 800 Feet





LEGEND:

-  HISTORIC LOCATIONS
-  City Limits
-  Roads
-  County Boundary



MAP NCR-14-D
City of Hazlehurst Cultural Resources
SE Quadrant

SOURCE: Jeff Davis County Comprehensive Plan 400
 Local Coordination Committee, 2005
 Heart of Georgia Altamaha RDC, 2005



See Map Legend Following Map 14-D