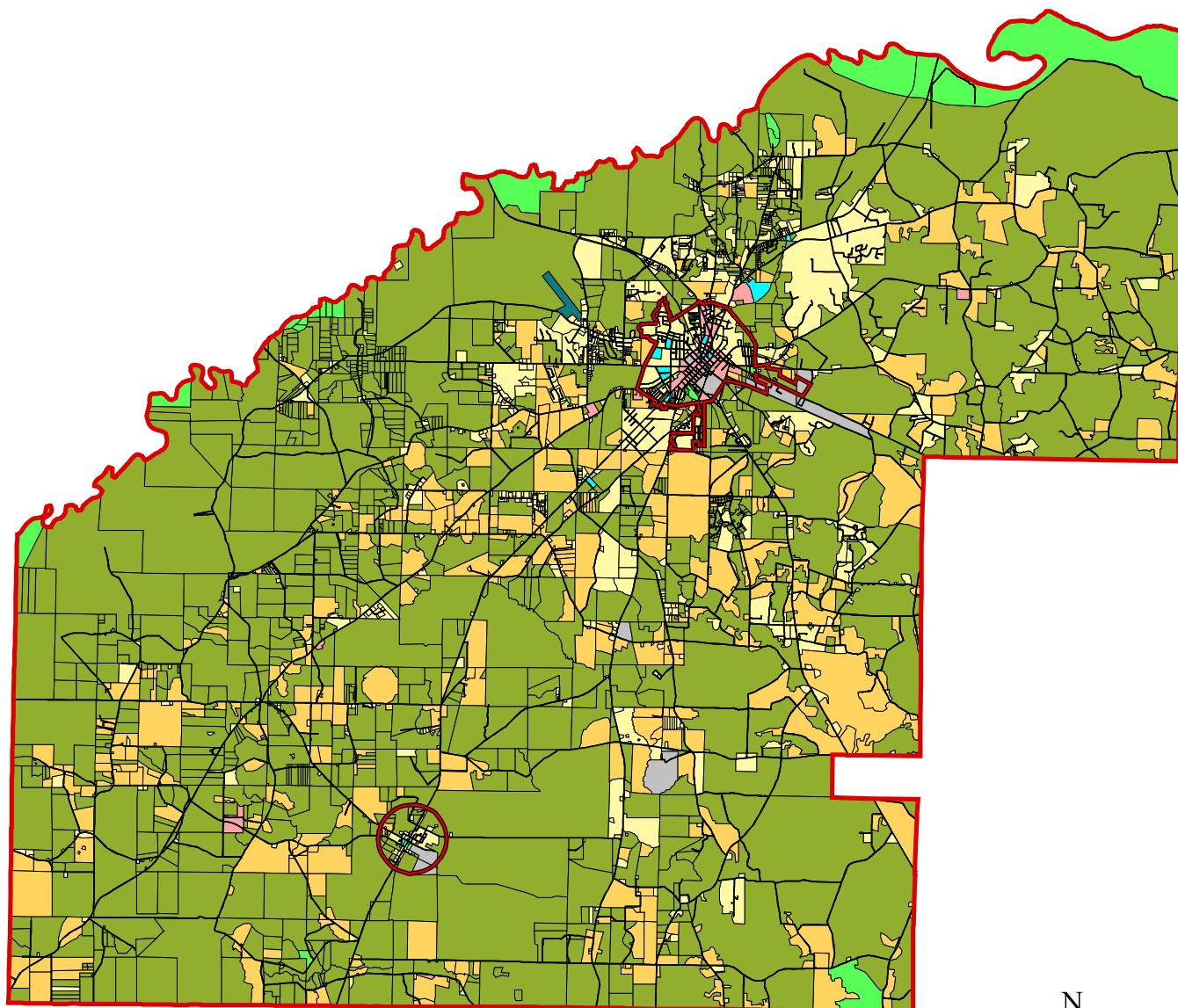


# MAP LU-1

Jeff Davis County  
Existing Land Use



## Existing Land Use

- Forestry
- Agriculture
- Residential
- Commercial
- Industrial
- Park/Recreation/Conservation
- Transportation/Communications/Utilities
- Public/Institutional

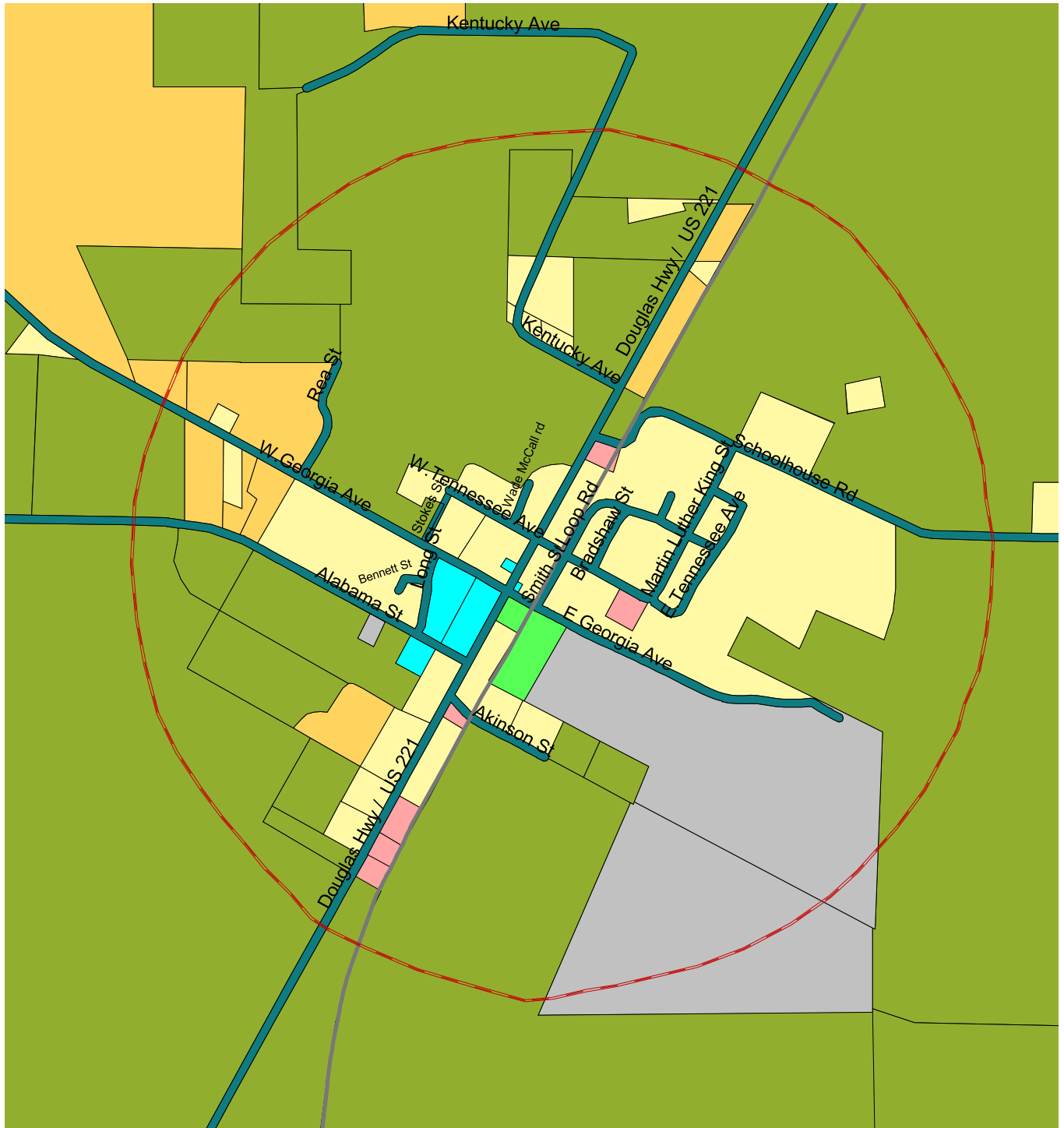


1 0 1 Miles

SOURCE: Heart of Georgia Altamaha RDC, 2005

# MAP LU-2

City of Denton  
Existing Land Use



1000 0 1000 Feet

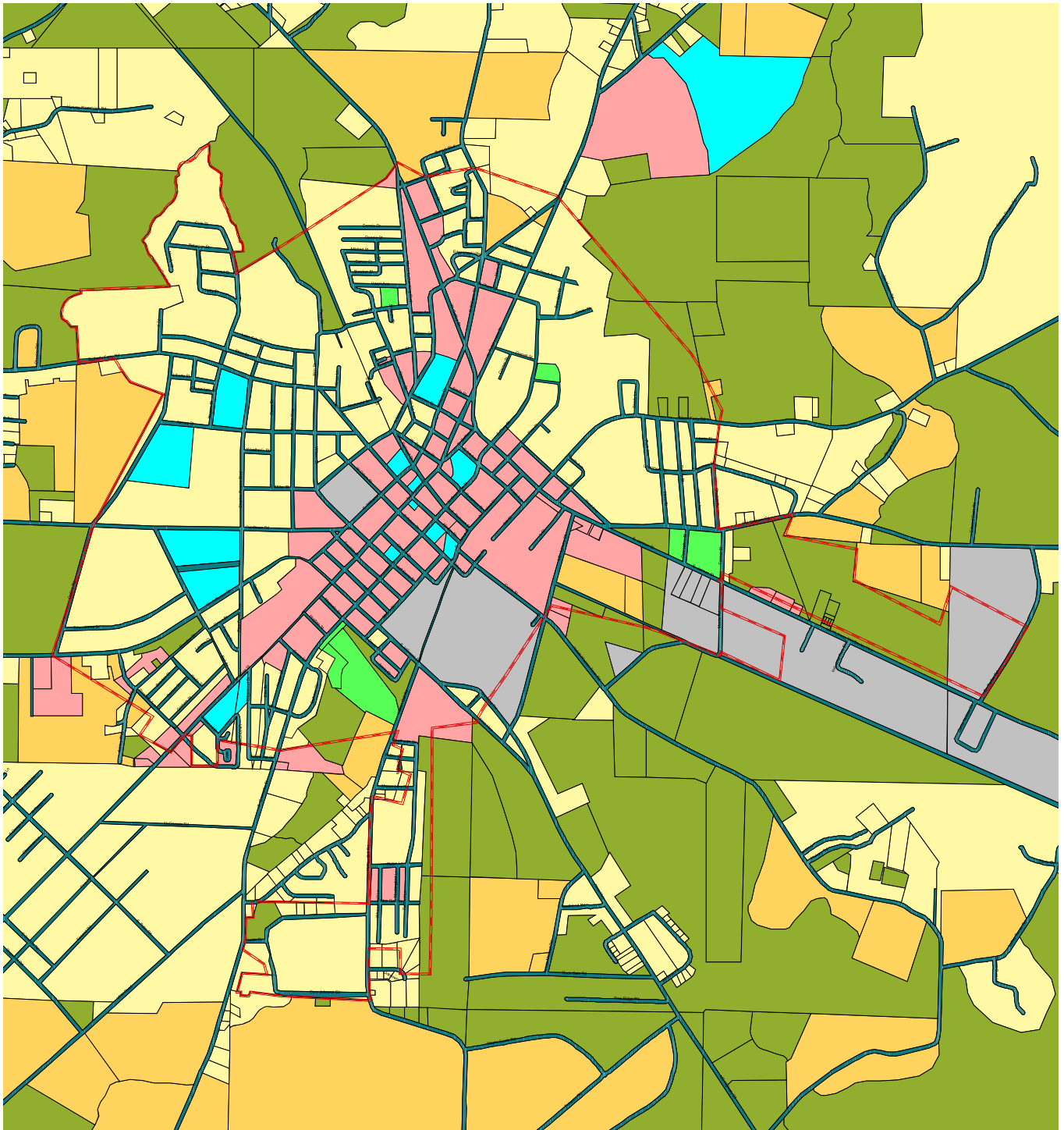
### Existing Land Use

- Forestry
- Agriculture
- Residential
- Commercial
- Industrial
- Park/Recreation/Conservation
- Transportation/Communications/Utilities
- Public/Institutional

SOURCE: Heart of Georgia Altamaha RDC, 2005

# MAP LU-3

City of Hazlehurst  
Existing Land Use



3000 0 3000 Feet

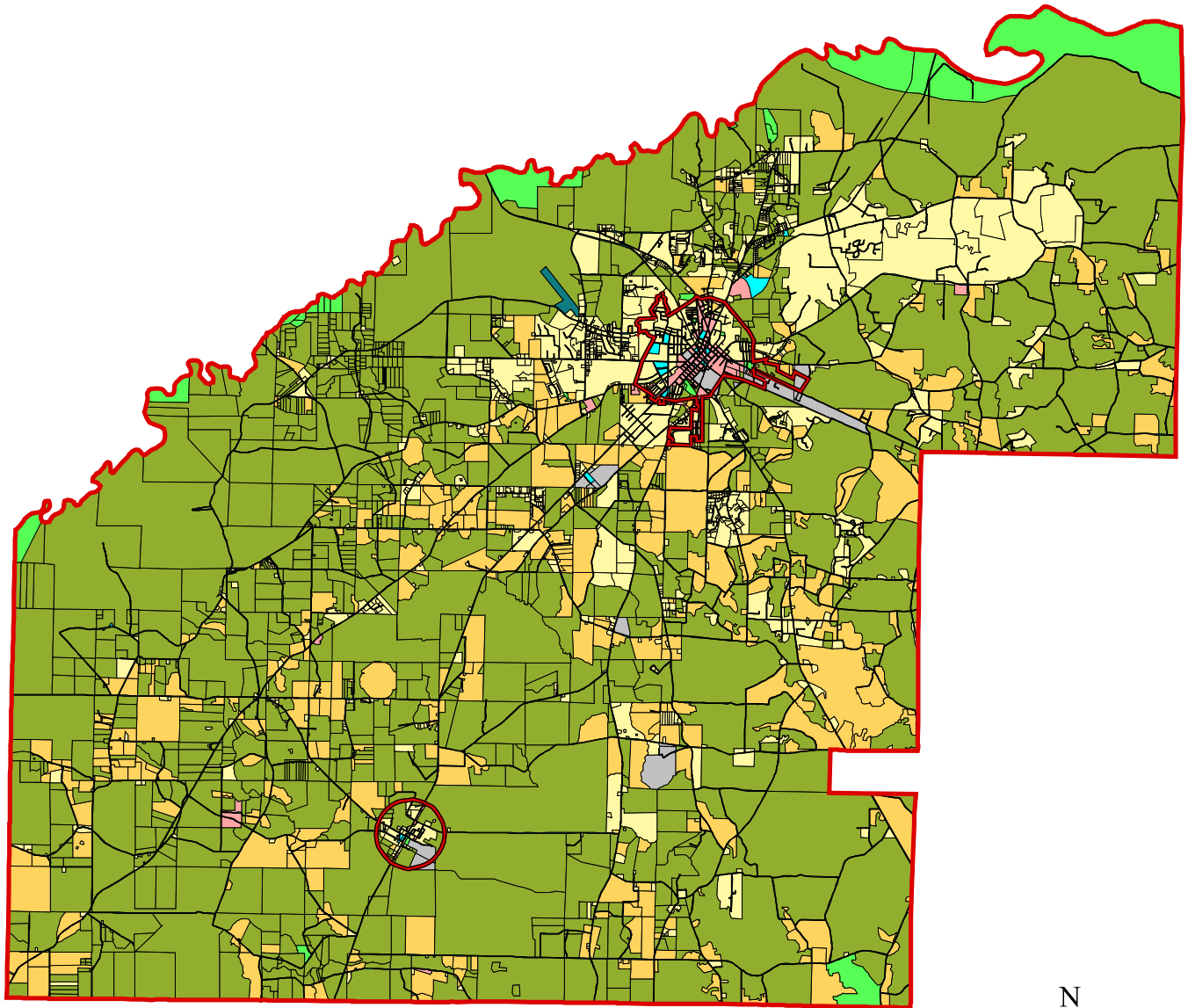
SOURCE: Heart of Georgia Altamaha RDC, 2005

### Existing Land Use

- Forestry
- Agriculture
- Residential
- Commercial
- Industrial
- Park/Recreation/Conservation
- Transportation/Communications/Utilities
- Public/Institutional

# MAP LU-4

Jeff Davis County  
Future Land Use



## Future Land Use

- Forestry
- Agriculture
- Residential
- Commercial
- Industrial
- Park/Recreation/Conservation
- Transportation/Communications/Utilities
- Public/Institutional

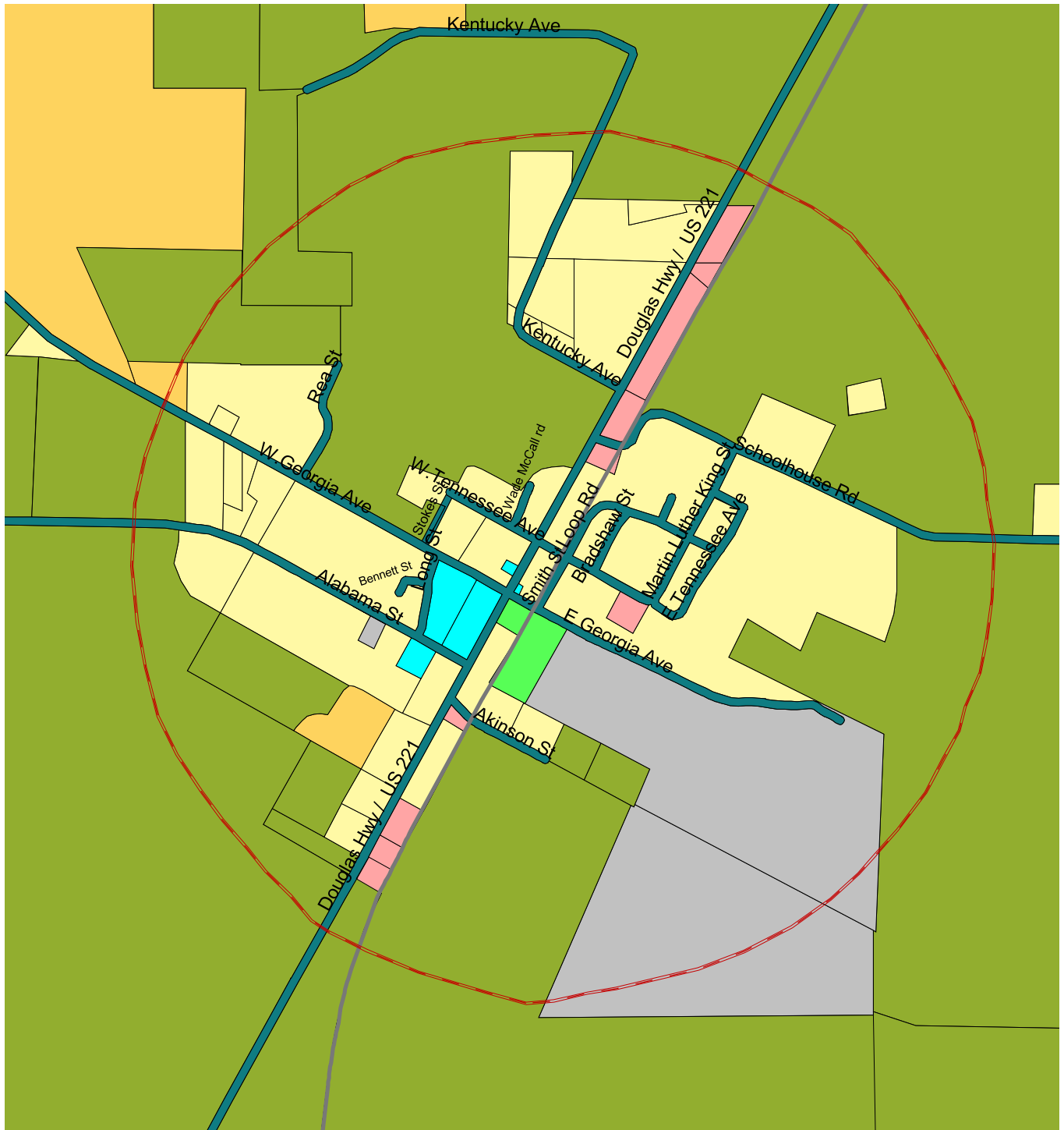


1 0 1 Miles

SOURCE: Heart of Georgia Altamaha RDC, 2005

# MAP LU-5

City of Denton  
Future Land Use



1000 0 1000 Feet

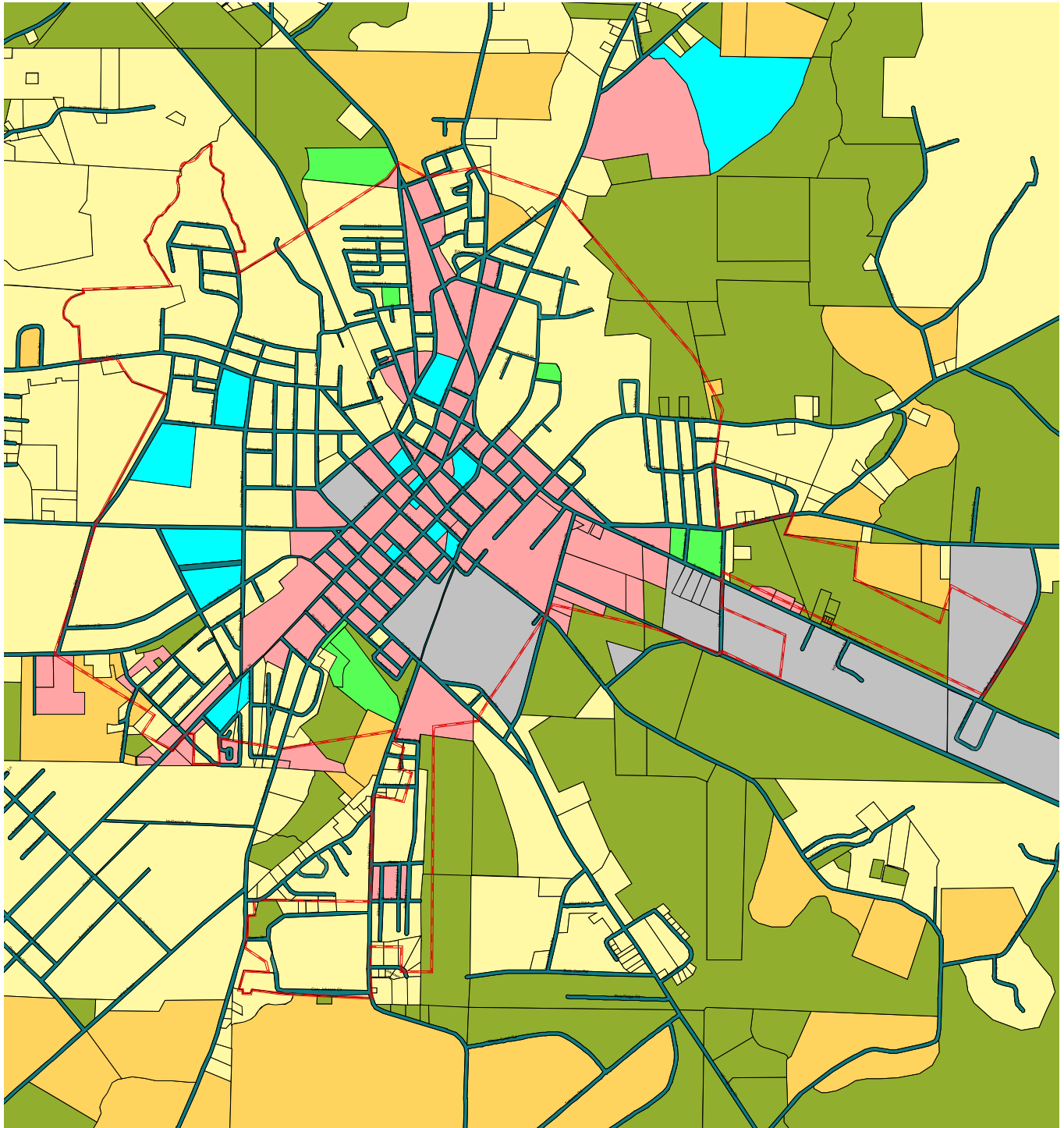
### Future Land Use

- Forestry
- Agriculture
- Residential
- Commercial
- Industrial
- Park/Recreation/Conservation
- Transportation/Communications/Utilities
- Public/Institutional

SOURCE: Heart of Georgia Altamaha RDC, 2005

# MAP LU-6

City of Hazlehurst  
Future Land Use



2000 0 2000 Feet



## Future Land Use

- Forestry
- Agriculture
- Residential
- Commercial
- Industrial
- Park/Recreation/Conservation
- Transportation/Communications/Utilities
- Public/Institutional

SOURCE: Heart of Georgia Altamaha RDC, 2005