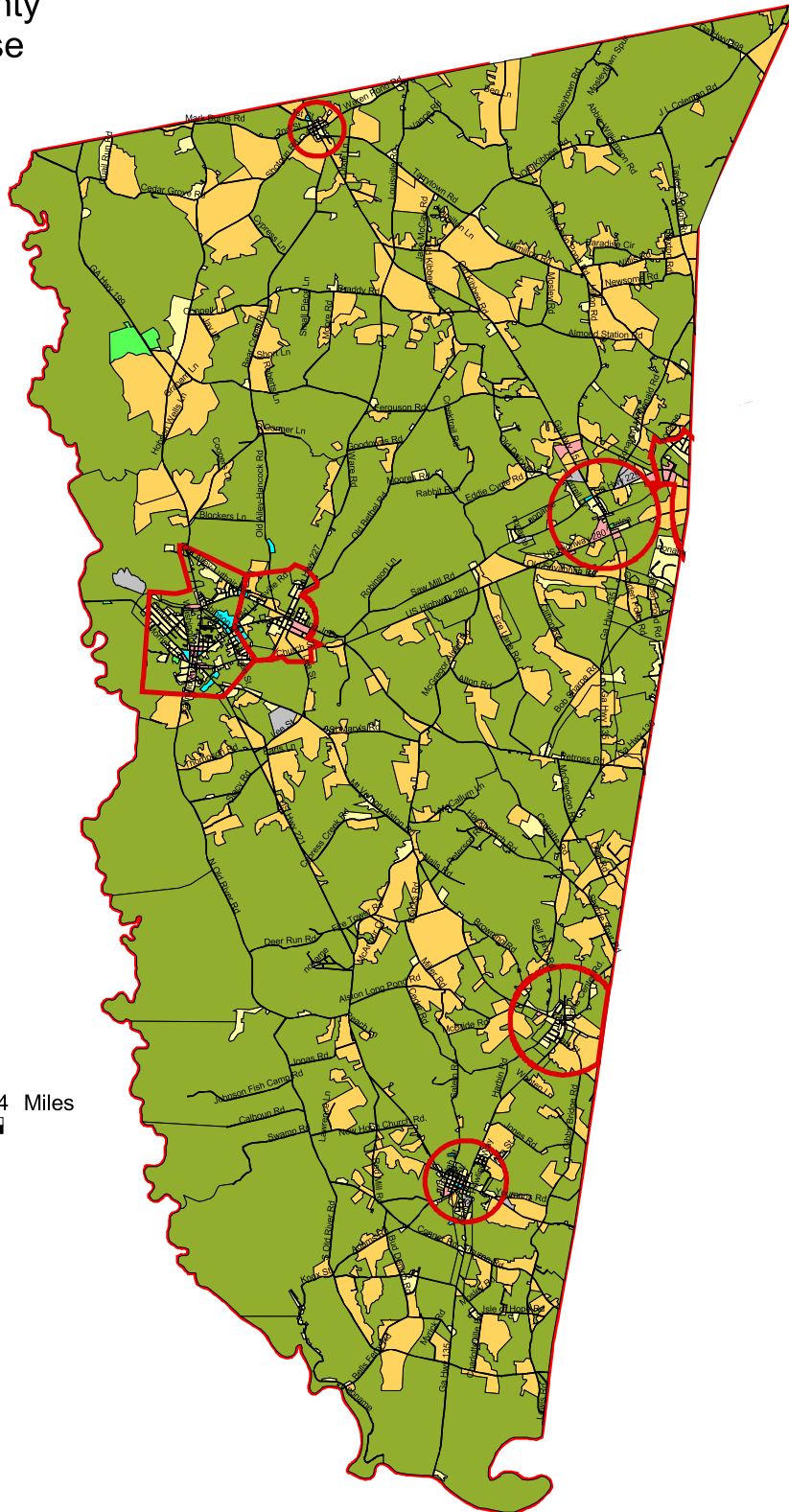


MAP LU-1

Montgomery County
Existing Land Use

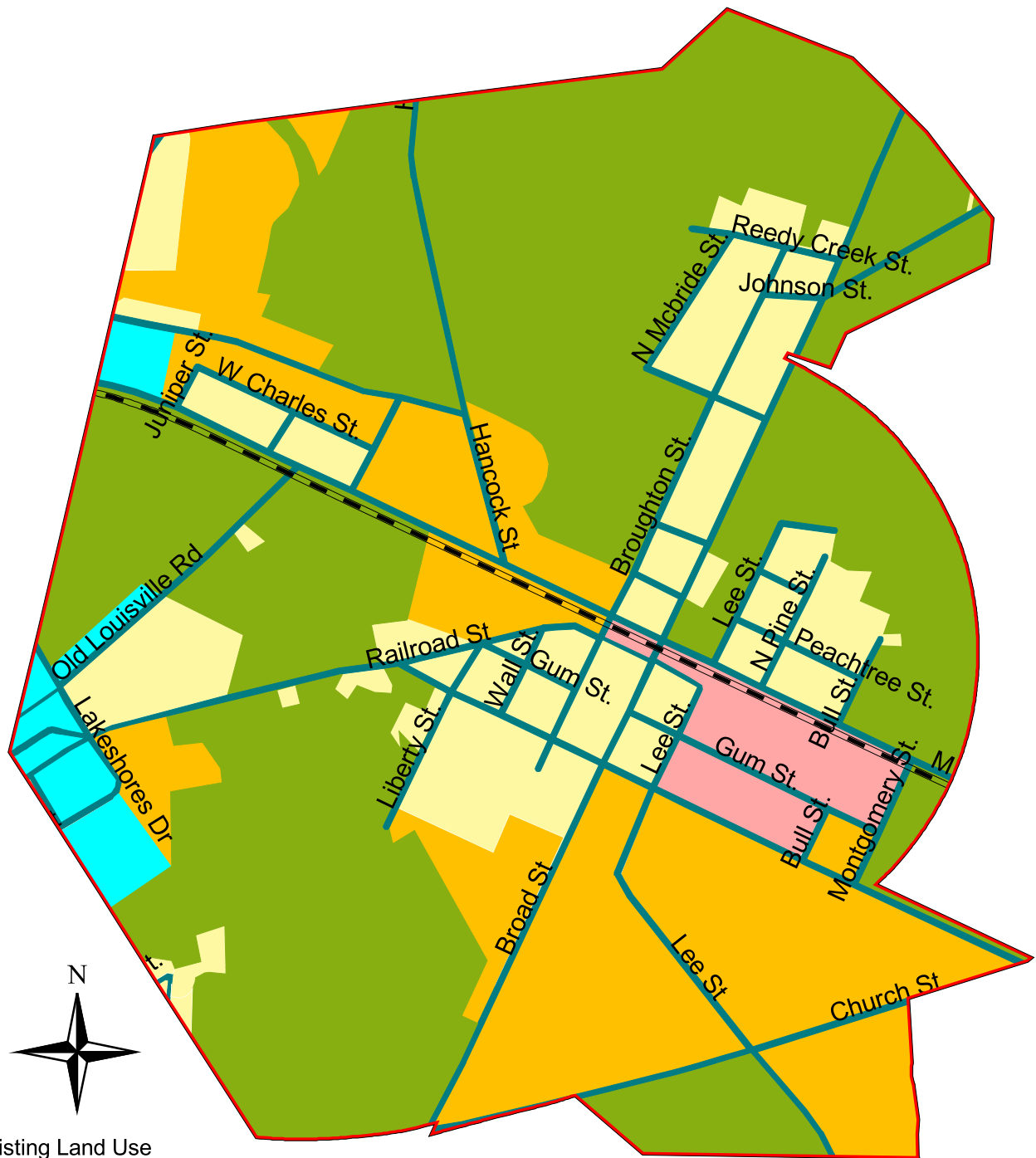


- Existing Land Use
- Forestry
 - Agriculture
 - Residential
 - Commercial
 - Industrial
 - Park/Recreation/Conservation
 - Transportation/Communications/Utilities
 - Public/Institutional

SOURCE: Heart of Georgia Altamaha RDC, 2005

MAP LU-2

City of Ailey
Existing Land Use



Existing Land Use

- Forestry
- Agriculture
- Residential
- Commercial
- Industrial
- Park/Recreation/Conservation
- Transportation/Communications/Utilities
- Public/Institutional

900 0 900 1800 Feet

SOURCE: Heart of Georgia Altamaha RDC, 2005

MAP LU-3

City of Alston
Existing Land Use



Existing Land Use

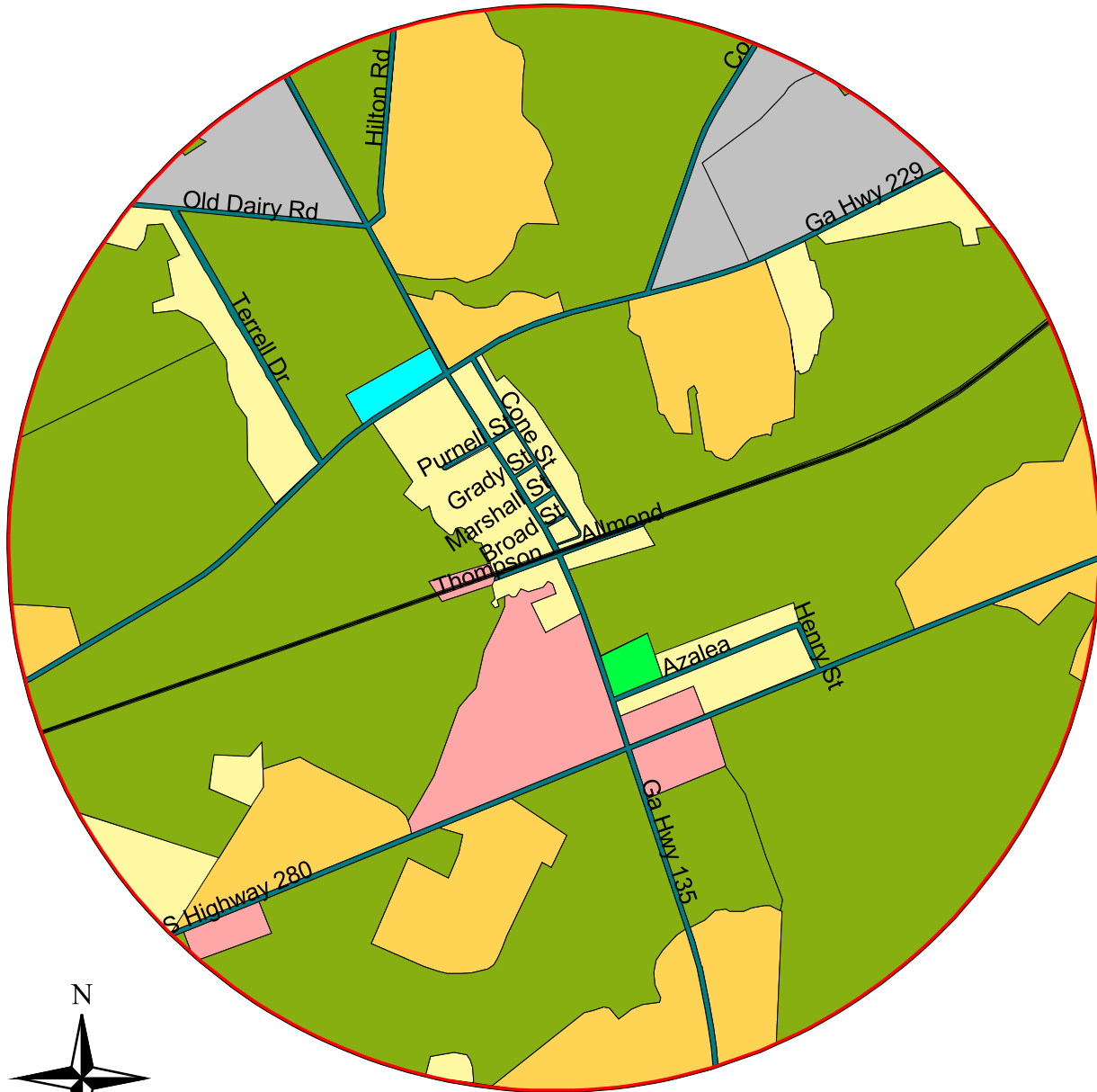
- Forestry
- Agriculture
- Residential
- Commercial
- Industrial
- Park/Recreation/Conservation
- Transportation/Communications/Utilities
- Public/Institutional

800 0 800 1600 Feet

SOURCE: Heart of Georgia Altamaha RDC, 2005

MAP LU-4

City of Higgston
Existing Land Use



Existing Land Use

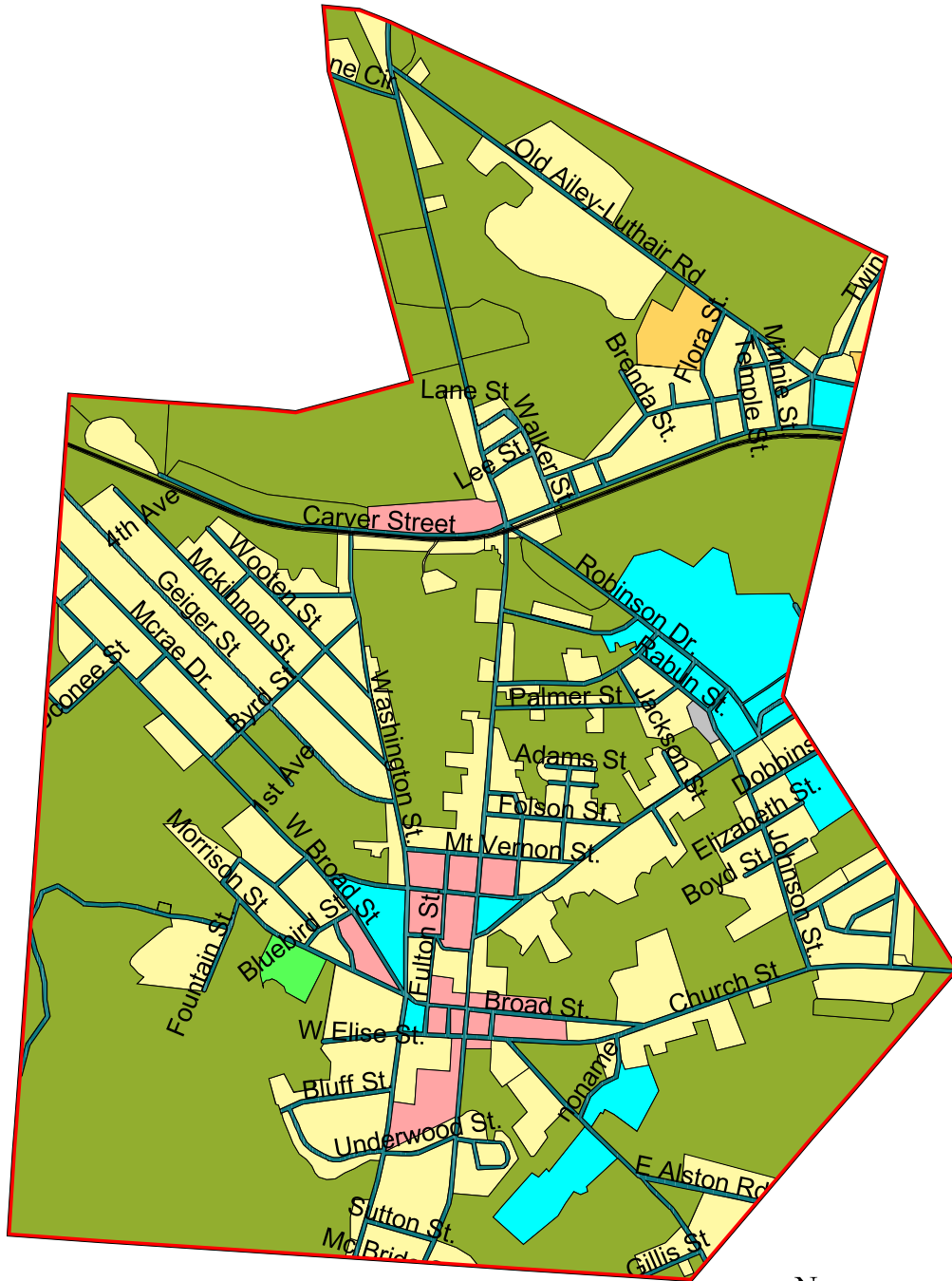
900 0 900 1800 Feet

- Forestry
- Agriculture
- Residential
- Commercial
- Industrial
- Park/Recreation/Conservation
- Transportation/Communications/Utilities
- Public/Institutional

SOURCE: Heart of Georgia Altamaha RDC, 2005

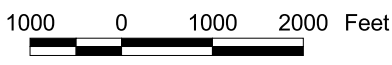
MAP LU-5

City of Mount Vernon
Existing Land Use



Existing Land Use

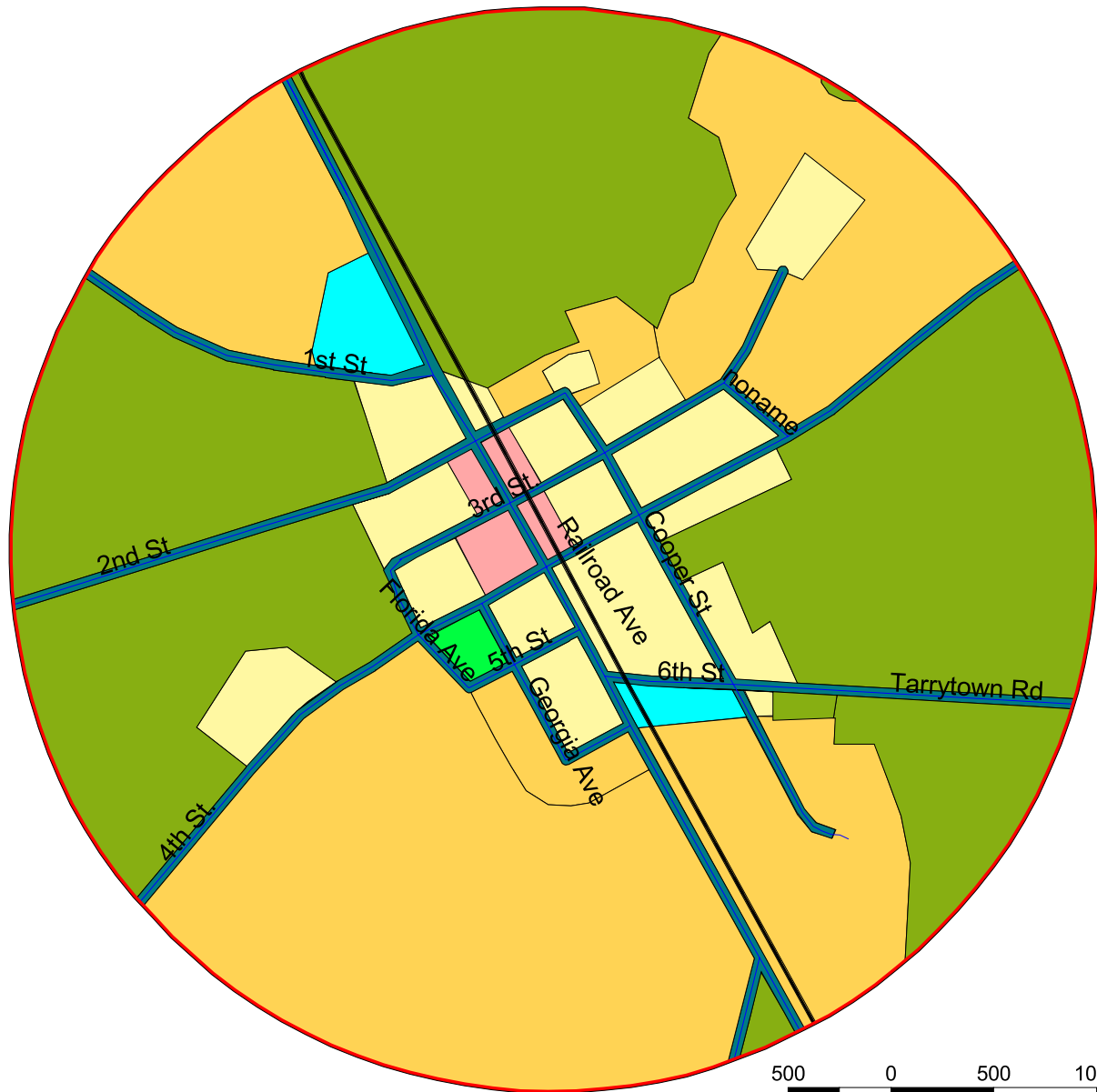
- Forestry
- Agriculture
- Residential
- Commercial
- Industrial
- Park/Recreation/Conservation
- Transportation/Communications/Utilities
- Public/Institutional



SOURCE: Heart of Georgia Altamaha RDC, 2005

MAP LU-6

City of Tarrytown
Existing Land Use



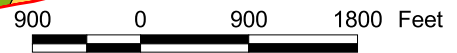
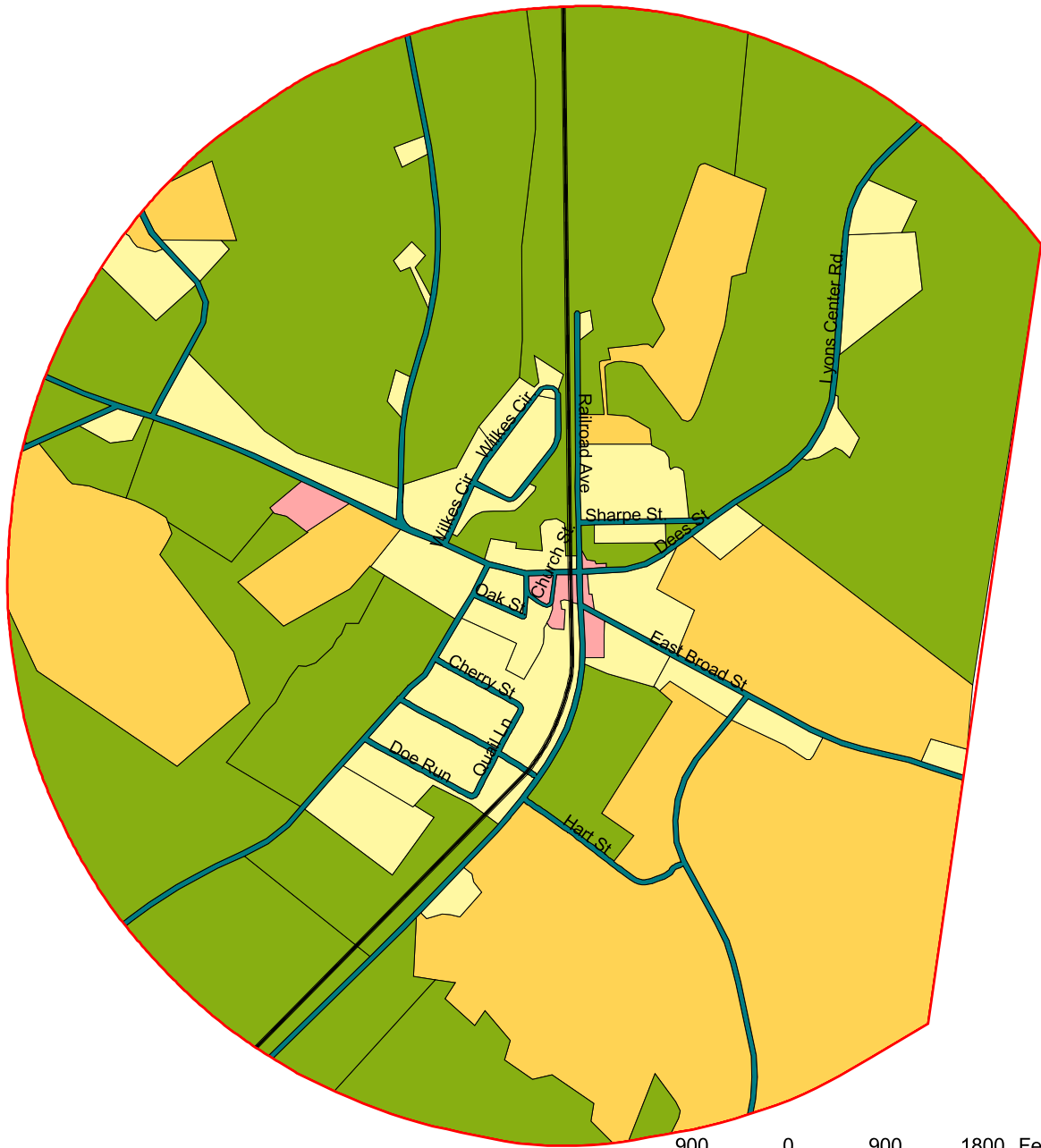
Existing Land Use

- Forestry
- Agriculture
- Residential
- Commercial
- Industrial
- Park/Recreation/Conservation
- Transportation/Communications/Utilities
- Public/Institutional

SOURCE: Heart of Georgia Altamaha RDC, 2005

MAP LU-7

City of Uvalda
Existing Land Use



Existing Land Use

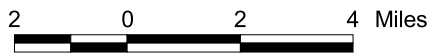
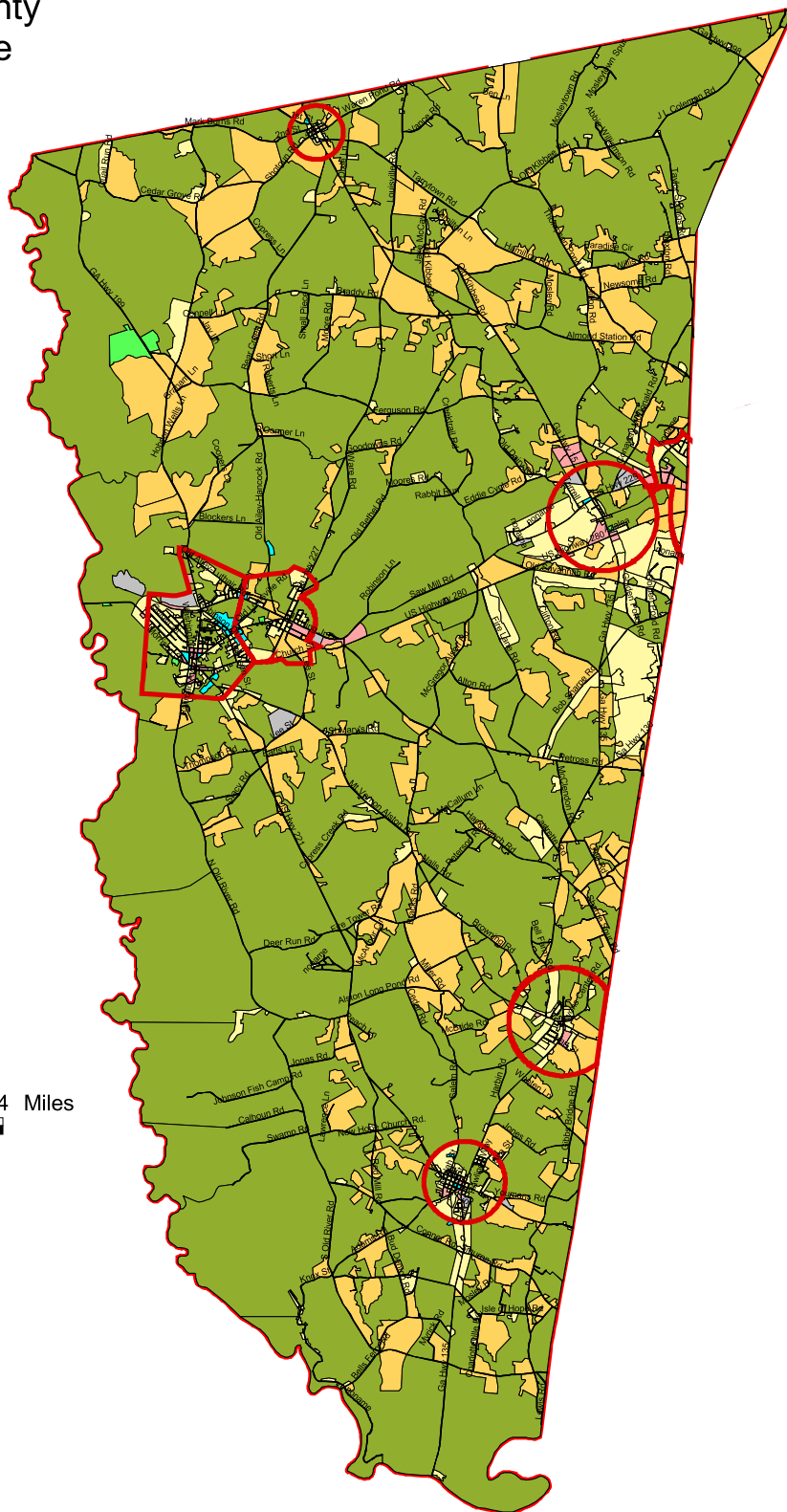
- Forestry
- Agriculture
- Residential
- Commercial
- Industrial
- Park/Recreation/Conservation
- Transportation/Communications/Utilities
- Public/Institutional



SOURCE: Heart of Georgia Altamaha RDC, 2005

MAP LU-8

Montgomery County
Future Land Use



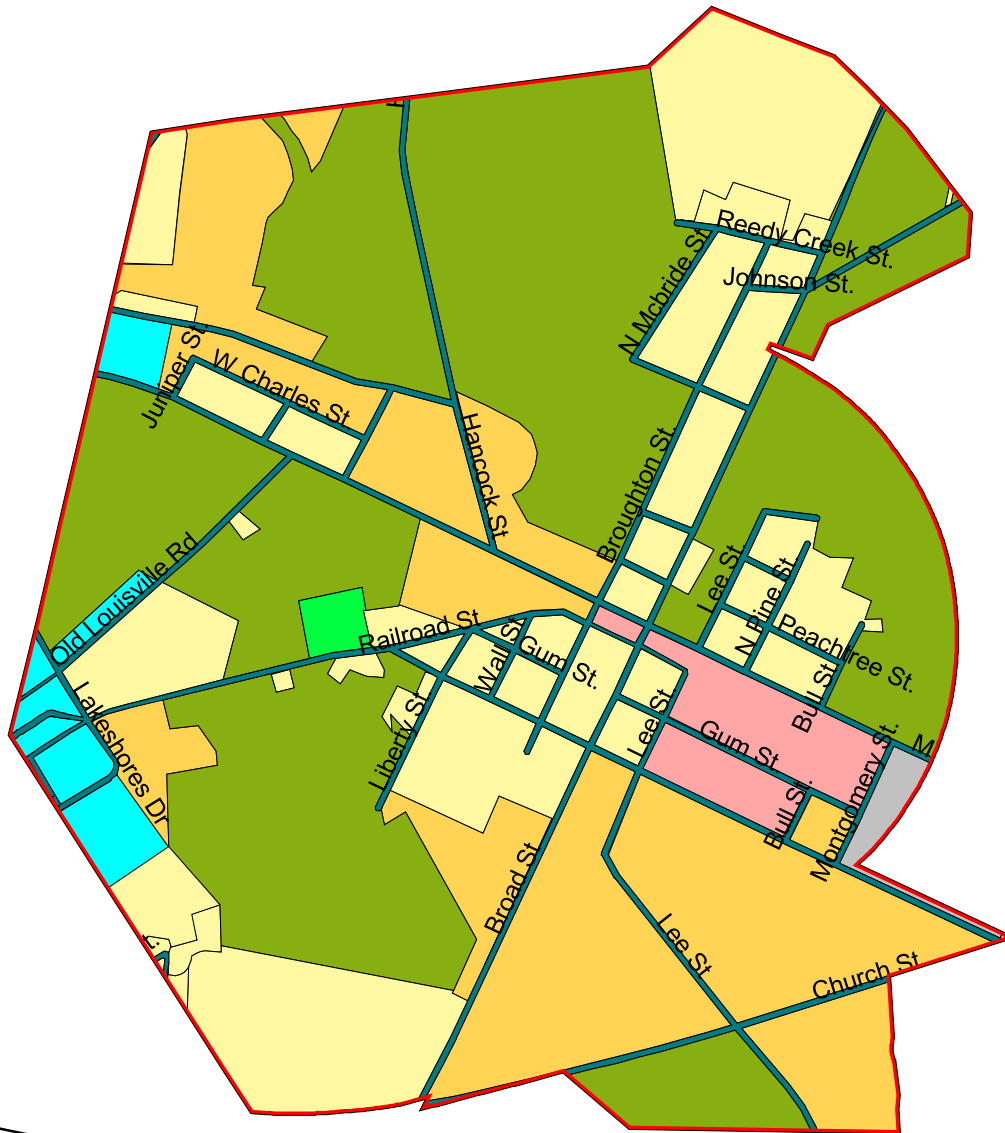
Future Land Use

- Forestry
- Agriculture
- Residential
- Commercial
- Industrial
- Park/Recreation/Conservation
- Transportation/Communications/Utilities
- Public/Institutional

SOURCE: Heart of Georgia Altamaha RDC, 2005

MAP LU-9

City of Ailey
Future Land Use



900 0 900 1800 Feet

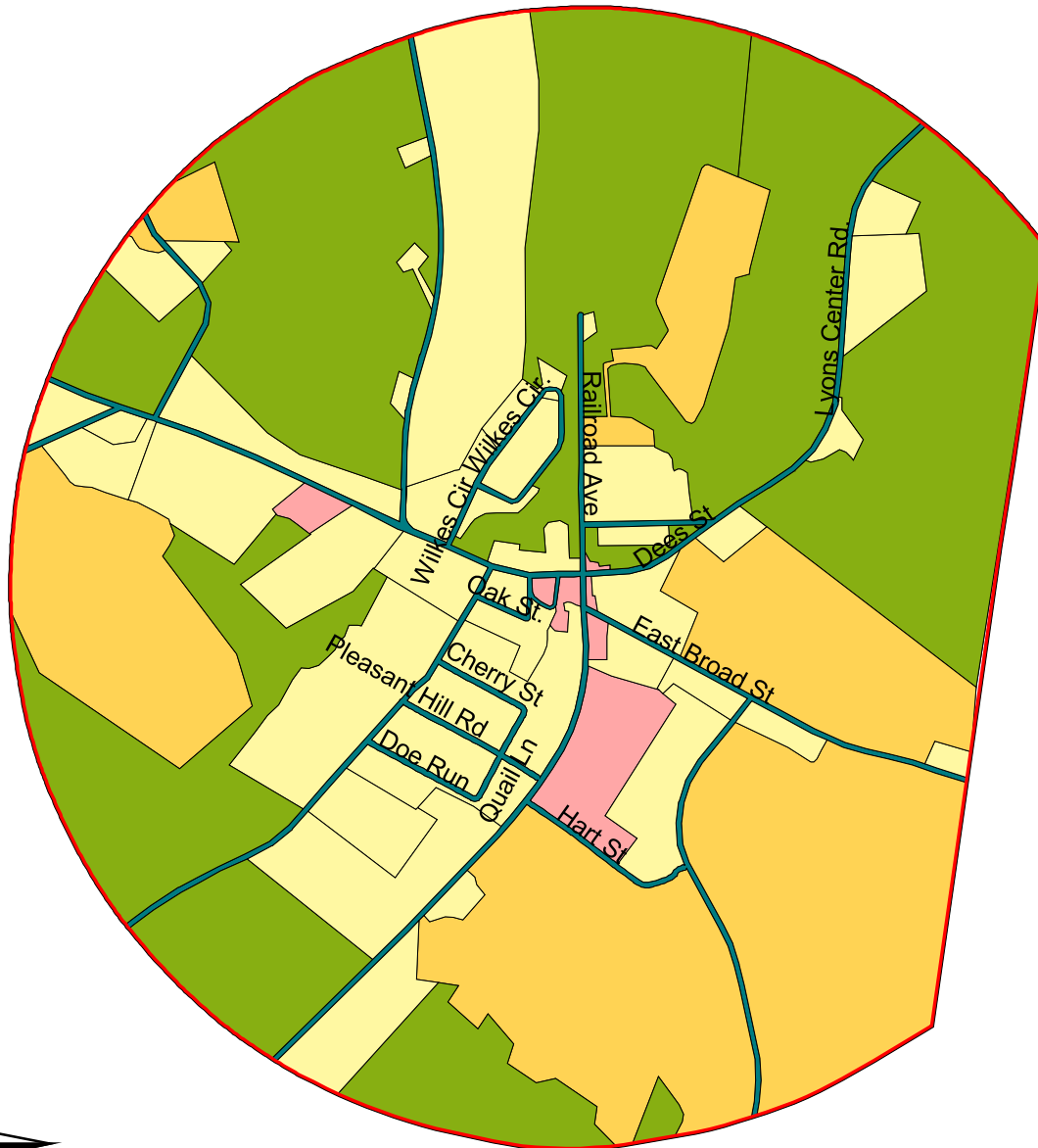
Future Land Use

- Forestry
- Agriculture
- Residential
- Commercial
- Industrial
- Park/Recreation/Conservation
- Transportation/Communications/Utilities
- Public/Institutional

SOURCE: Heart of Georgia Altamaha RDC, 2005

MAP LU-10

City of Alston
Future Land Use



900 0 900 1800 Feet

A scale bar with markings at 900, 0, 900, and 1800 feet.

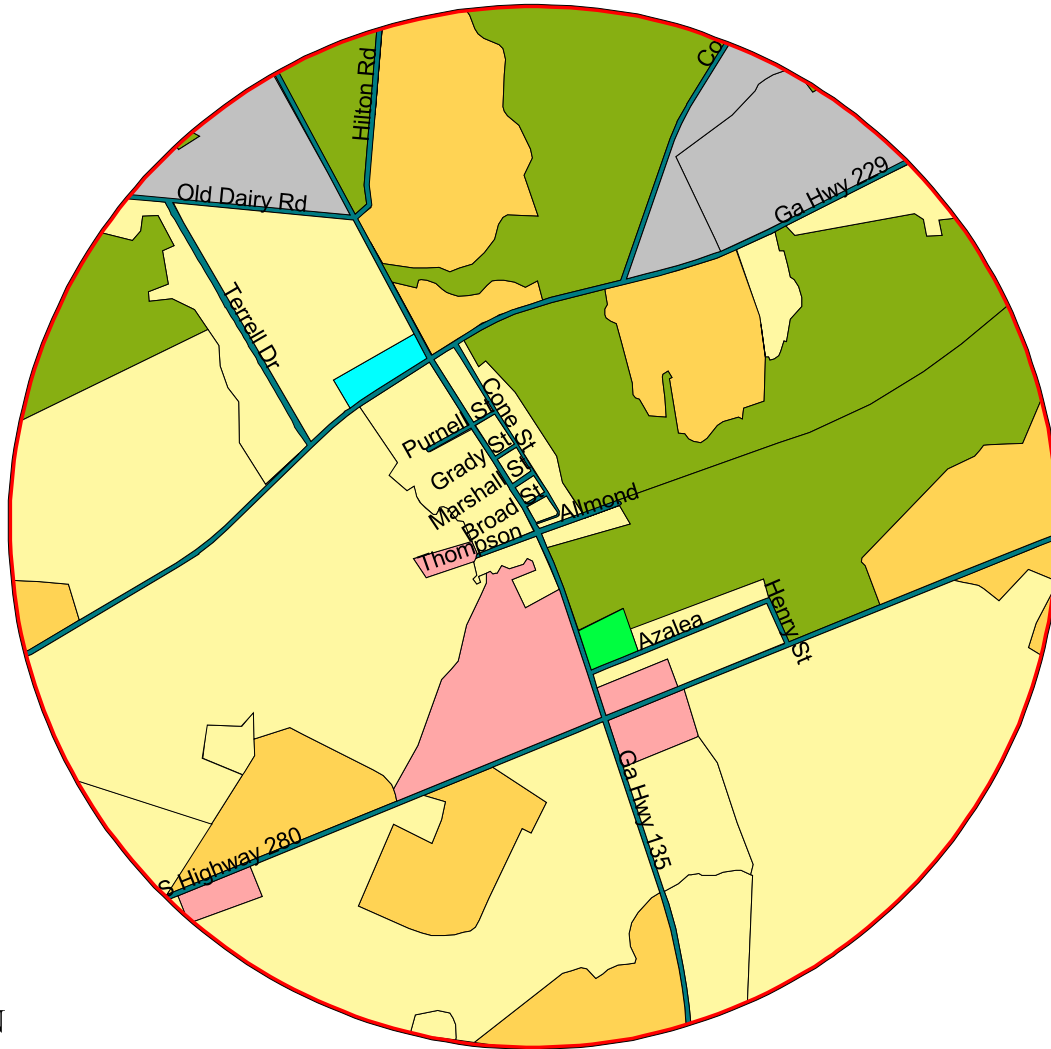
Future Land Use

- Forestry
- Agriculture
- Residential
- Commercial
- Industrial
- Park/Recreation/Conservation
- Transportation/Communications/Utilities
- Public/Institutional

SOURCE: Heart of Georgia Altamaha RDC, 2005

MAP LU-11

City of Higgston
Future Land Use



1000 0 1000 2000 Feet

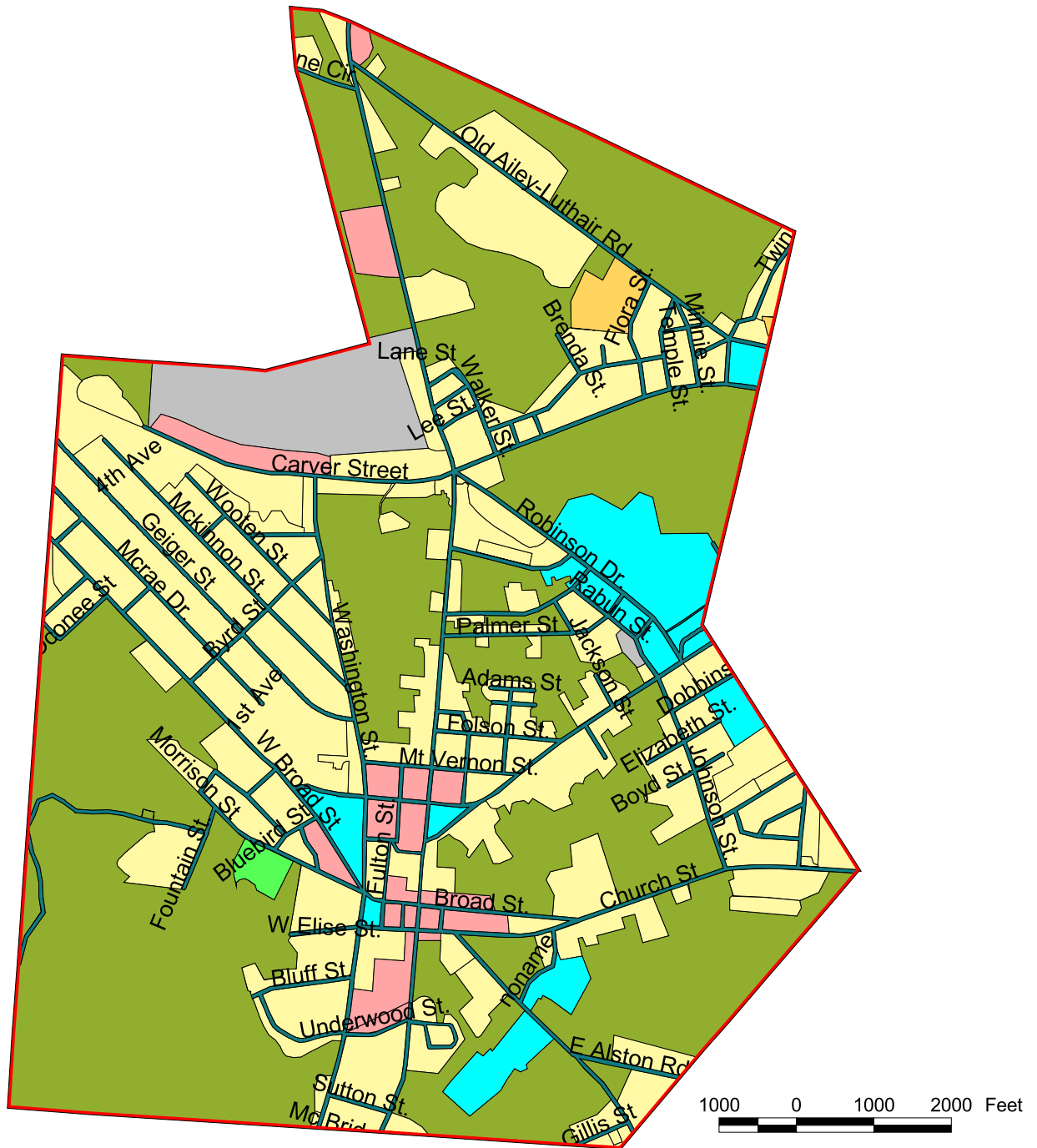
Future Land Use

-  Forestry
-  Agriculture
-  Residential
-  Commercial
-  Industrial
-  Park/Recreation/Conservation
-  Transportation/Communications/Utilities
-  Public/Institutional

SOURCE: Heart of Georgia Altamaha RDC, 2005

MAP LU-12

City of Mount Vernon
Future Land Use

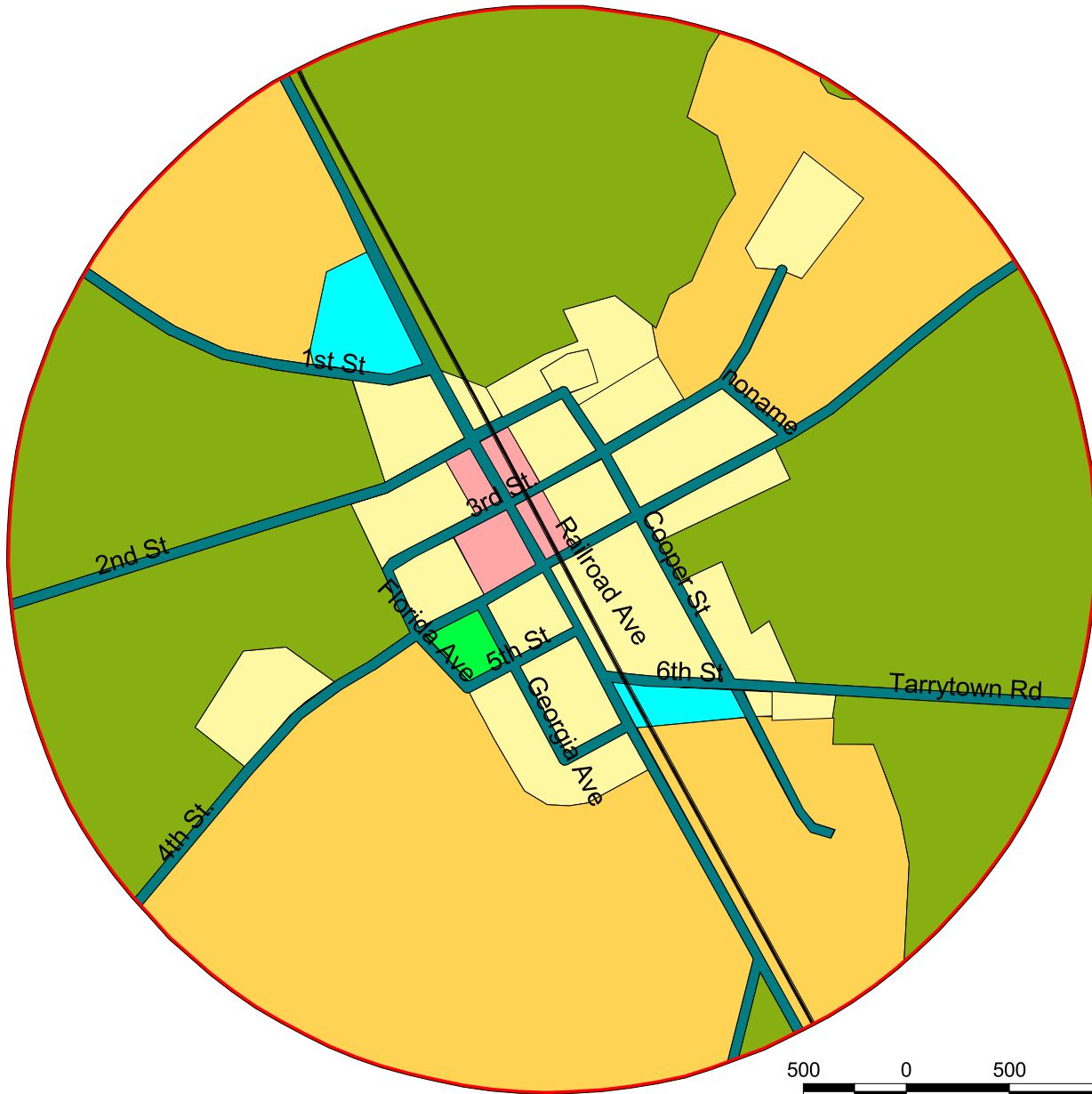


- Future Land Use
- Forestry
 - Agriculture
 - Residential
 - Commercial
 - Industrial
 - Park/Recreation/Conservation
 - Transportation/Communications/Utilities
 - Public/Institutional

SOURCE: Heart of Georgia Altamaha RDC, 2005

MAP LU-13

City of Tarrytown
Future Land Use



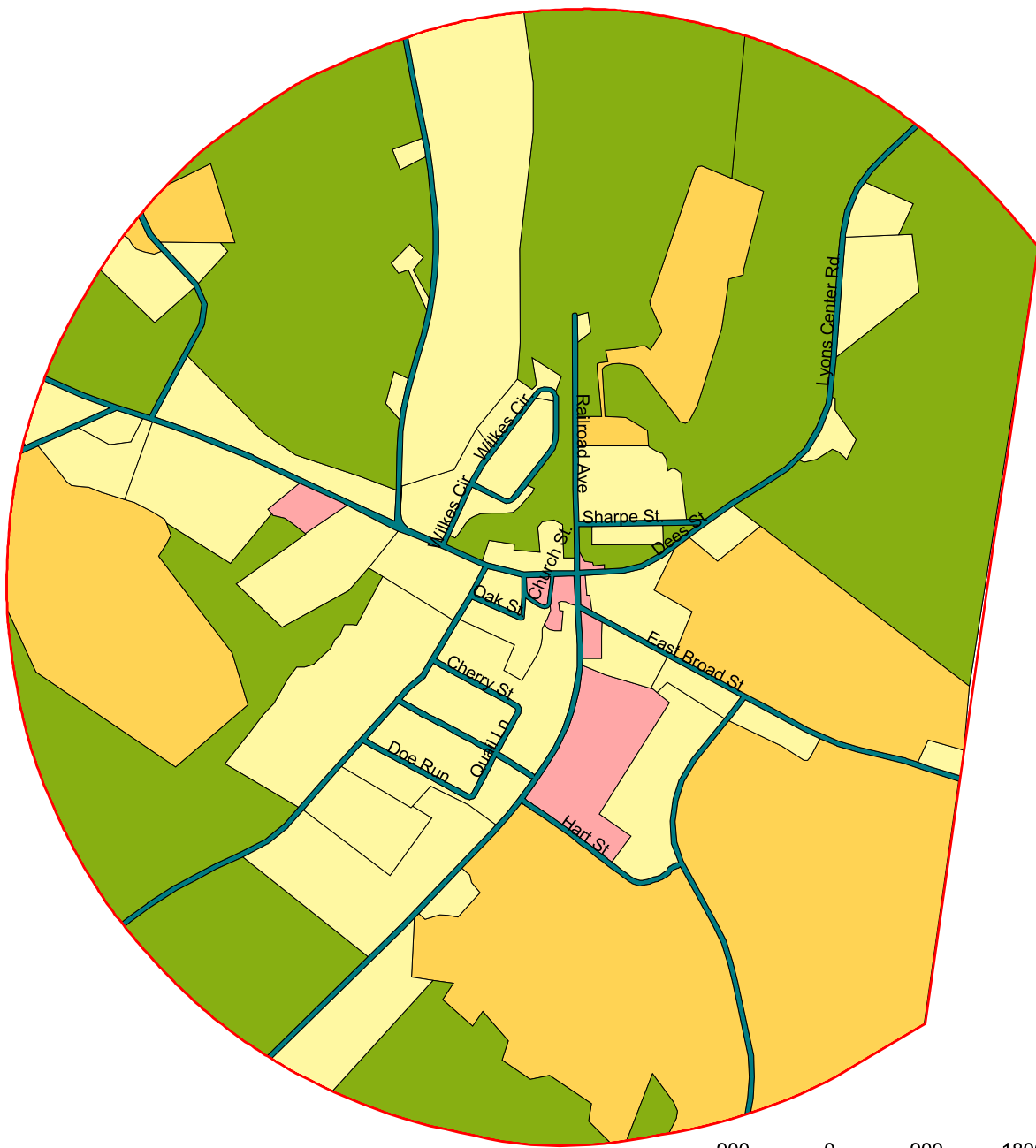
Future Land Use

- Forestry
- Agriculture
- Residential
- Commercial
- Industrial
- Park/Recreation/Conservation
- Transportation/Communications/Utilities
- Public/Institutional

SOURCE: Heart of Georgia Altamaha RDC, 2005

MAP LU-14

City of Uvalda
Future Land Use



900 0 900 1800 Feet



Future Land Use

-  Forestry
-  Agriculture
-  Residential
-  Commercial
-  Industrial
-  Park/Recreation/Conservation
-  Transportation/Communications/Utilities
-  Public/Institutional

SOURCE: Heart of Georgia Altamaha RDC, 2005