

City of Haralson

Comprehensive Plan 2016-2036



*Prepared with technical assistance by
Three Rivers Regional Commission*

Adopted October 2016

Table of Contents

Introduction	3
Community Goals	4
Vision Statement	4
List of Goals and Policies.....	4
Needs and Opportunities	9
SWOT Analysis	9
Comprehensive List of Needs and Opportunities:.....	10
Character Areas and Land Use	12
Historic	12
Rural Residential	14
Commercial.....	15
Light Industrial.....	16
Gateway Corridor.....	17
Character Area Map.....	18
Community Work Program.....	19
Report of Plan Accomplishments (STWP 2011-2015):.....	19
Community Work Program (2016-2021):.....	21
Appendices	
• Transportation Element – Coweta County Joint Transportation Plan	
• Meeting Sign-In Sheets	

Introduction

This plan update was completed in accordance with the Georgia Planning Act of 1989 and the Georgia Department of Community Affairs Minimum Standards and Procedures for Local Comprehensive Planning.

The City of Haralson was founded in 1820. It is located approximately 20 miles south of Newnan in extreme southern Coweta County. Its southern border is Meriwether County. The primary roadway is GA State Route 85. According to the 2010 census, the population is 166.

Purpose of the Comprehensive Plan

The City of Haralson Comprehensive Plan shall provide guidance and policy standards for future growth and development. The plan also identifies needs and opportunities which currently exist within the community. Goals, policies, and specific implementation measures are also listed to set policy for particular segments and specific areas of the city.

City Council Members

Audrey Holliday Cruzan, Mayor
Scott Beaumont, Councilman
Fred Rudbeck, Councilman
Belinda Wilson, Councilwoman

Comprehensive Plan Steering Committee and Public Participation

The City of Haralson Council appointed a Comprehensive Plan Steering Committee to assist and guide the update of the comprehensive plan. A series of consecutive meetings took place to address the components of the plan update. The Steering Committee included members of the city council, city government and other community stakeholders.

Steering Committee Members

Audrey Holliday Cruzan, Mayor
Paulette Brown, City Clerk
Eric Spencer, Citizen
Clint Barbour, Citizen
Jamie Thompson, Business Owner/Citizen

As part of the public participation component, a community visioning meeting was held on May 3rd, 2016 to gather input from the citizens. Two public hearings were held in regards to the comprehensive plan update process in which citizens could obtain information about the planning process, review, and comment on the plan. The public hearings were held November 9th, 2015 and September 19th, 2016.

Community Goals

The purpose of the Community Goals and Policies section is to guide and direct the City of Haralson's decision making process for the future of the community. Following the established goals and policies ensures the plan is implemented by the citizens and local leaders.

Vision Statement

A broad vision statement which was developed by the steering committee and community stakeholders is below which depicts what the community is today and what it desires to become in the future.

Haralson will be a community of intelligent and conservative growth, with participation and collaboration between the citizens, businesses and government. Haralson will adhere to its characteristics of being a safe rural community, with a friendly historic, small town atmosphere that is conducive to healthy and socially positive, family environments.

List of Goals and Policies

Economic Development

Goal:

Improve the overall economic vitality of the community with the expansion and creation of business, tourism, light industry, and economic development within the city.

Policies:

- We will encourage the development of downtown as the City of Haralson's vibrant historic center with retail, restaurants, businesses and other amenities.
- Our community will accommodate new residential and commercial growth while enhancing and retaining the small town sense of place.
- We will promote the re-use of the historic downtown structures.

- We will seek to establish additional community wide events.
- We will seek to participate in the proposed state movie trail to promote the film industry in Haralson.
- Work with the Coweta County Chamber of Commerce to promote the City of Haralson.

Natural and Cultural Resources

Goal:

To protect and use efficiently the unique natural and cultural resources within the City of Haralson.

Policies:

- The protection and conservation of our community's resources will play an important role in the decision-making process.
- We will support enhanced solid waste reduction and recycling initiatives.
- We will incorporate the connection, maintenance and enhancement of greenspace in all new development.
- We will reduce the impact of development on the natural topography and existing vegetation through limiting land disturbance activities and clear cutting.
- We will seek to preserve our tree canopy through actions such as a tree preservation ordinance.
- We will seek to list the city on the National Register of Historic Places which would recognize the city's historic resources and allow for the use of historic tax incentives for the rehabilitation of historic structures.

Facilities and Services

Goal:

To provide adequate infrastructure, services, and facilities to meet the variety needs of the community.

Policies:

- Our community will make efficient use of existing infrastructure as well as future investments and expenditures for capital improvements and long-term operation and maintenance costs.
- Our community will use planned infrastructure to support areas identified as suitable for development.
- We will seek additional applicable services from surrounding municipalities and providers including water, public safety, and waste management.
- We will continue to provide codes enforcement though Coweta County.
- We will work jointly with neighboring jurisdictions on developing solutions to shared issues and plan collaboratively.
- We will engage in collaborative planning with the local school board for any appropriate locations for proposed schools and other community facilities.

Housing

Goal:

Provide a range of affordable, safe, and diversified housing for all citizens.

Policies:

- We will eliminate substandard or dilapidated housing in our community.
- We will strive to ensure proper and consistent codes enforcement for property maintenance.
- We will seek to expand our sidewalk system and increase connectivity.

Land Use

Goal:

Encourage appropriate and compatible land uses within the community and maximize existing infrastructure.

Policies:

- Recreation and greenspace will become an important part of our community's land use plan.
- We will preserve the rural and small town character which defines our community.
- We will enhance our gateways and highway corridors to be welcoming and attractive.
- We will be committed to redeveloping and enhancing existing commercial and industrial areas located within our community.
- We will encourage the use of landscaping, lighting, signage, underground utilities and building design to add value to our community.
- We will encourage redevelopment and in-fill over the development of new property on the periphery of town.
- Green space will be a major component within our neighborhoods, along our streets, parking lots and within commercial and industrial developments.
- We will review land planning and development concepts that may be new to our area, but have been successful in other places.
- We will invest in parks and open space to enhance the quality of life of our citizens.
- We will seek an appropriate annexation plan to accommodate future residential and commercial expansion.

Transportation

Goal:

Provide safe and maintained transportation facilities to all citizens while striving to expand and increase connectivity.

Policies:

- We will ensure that vehicular traffic will not harm the residential nature of our neighborhoods.

- Our new and reconstructed roadways will reflect community standards of aesthetics, environmental stewardship and design.
- We will encourage walking and biking in our community.
- We will seek to expand bike paths within the city.
- We will promote connectivity through the road network.
- We will prioritize streets to be re-paved throughout the city.
- We will continue to make needed repairs and maintenance to prioritized sidewalks and expand sidewalks where needed.

Needs and Opportunities

The Needs and Opportunities section addresses what the City of Haralson needs to make it what it wants to become and what it currently lacks to achieve its vision. This section also showcases existing opportunities available within the community which should be utilized and supported to implement the vision.

To help gain a more accurate and balanced list of needs and opportunities, a SWOT (Strengths, Weaknesses, Opportunities, and Threats) analysis is conducted.

SWOT Analysis (Strengths, Weaknesses, Opportunities, Threats)

Strengths	
<ul style="list-style-type: none"> • Small town • Historic character • Safe community 	<ul style="list-style-type: none"> • Movie industry • Leadership and governance
Weaknesses	
<ul style="list-style-type: none"> • Apprehension exists towards any change • Lack of population growth • Lack of clear and up to date ordinances • Lack of steady revenue generation 	<ul style="list-style-type: none"> • Code enforcement consistency • Lack of population diversity • Low citizen participation in community affairs
Opportunities	
<ul style="list-style-type: none"> • Film industry • Room for growth and expansion • Tourism • Annexation possibilities for both residential, commercial and industrial • Rail spurs • Proposed National Register of Historic Places nomination 	<ul style="list-style-type: none"> • Increased intergovernmental cooperation i.e. sheriffs dept • New town festival • State Movie trail participation • Downtown structures are available for new uses
Threats	
<ul style="list-style-type: none"> • Outdated ordinances could cause future legal issues • Lack of younger population • Older structures downtown are vacant and underutilized 	<ul style="list-style-type: none"> • Housing availability is limited • Lack of retail and commercial activity • Lack of ordinances to allow for business growth

Comprehensive List of Needs and Opportunities:

The Plan Steering Committee, local citizens and stakeholders identified needs and opportunities which exist within the City of Haralson. This list should help guide future planning efforts and prioritize projects undertaken by the City.

Needs:

- Additional retail while maintaining small town feel
- Growth in general is needed
- Lack of commercial property
- Filming can disrupt traffic
- Need for streamlining the permitting process for businesses
- Town feels split and disjointed by the railroad
- Need more retail especially independent and locally owned
- Attractiveness of businesses and aesthetics could be improved
- Welcome and directional signage needed
- Additional locally owned businesses
- Railroad causes business and town to feel disjointed
- Additional community services such as public safety are needed
- Need for Share the Road signs for bicyclists.
- Need litter fine signs along GA Hwy 85/Gateway Corridor
- Lighting needed along GA Hwy 85

Opportunities:

- Potential growth may move south from Senoia which will call for proactive planning
- Increased residential growth would be beneficial
- Town festival or fair should be developed
- More community wide events
- Revitalization of downtown commercial buildings
- Film industry tourism
- Approachable and cooperative local government

Character Areas and Land Use

Character areas are geographic sub-areas of a community which contain unique characteristics and physical form. According to the Department of Community Affairs, Character areas have unique or special characteristics, have potential to evolve into a unique area when provided specific and intentional guidance, or require special attention due to unique development issues. Character areas may be identified by the types of development found there which vary from historic downtowns, commercial/industrial areas, or residential neighborhoods. Other character areas may lack development and include more natural features such as greenspace or parkland.

The following list identifies character areas found within the City of Haralson. Each character area listed contains a description and desired development patterns, recommended land uses, and a list of implementation measures. Current photos are also included which give an actual snap shot into each distinct character area.

Character areas within the City of Haralson are designated as:

- Historic
- Rural Residential
- Commercial
- Light Industrial
- Gateway Corridor

Historic

Description

The built environment that makes up the identity of the Town of Haralson is located here in the area designated as historic. Century old stores, churches, homes, and old gin are found here and attribute to the sense of place. The historic area is divided by Georgia State Route 85 which is also the Gateway Corridor and the CSX railroad. The charm and quaint characteristics of the historic area have been an attraction for the film industry in recent years with projects such as The Walking Dead and Lawless. More to film activity is planned the future. Commercial activity exists in this area and additional business activity is needed in vacant historic buildings in the small downtown section of the area. The Haralson City Hall and City Park are located adjacent to the historic area and offer residents a walking trail, picnic pavilion and playground.

Desired Development Patterns

The citizens of Haralson take pride the rural sense of place which makes up the character of the community. Retaining the small town charm is vital. Historic structures located within the area should be preserved, reused, revitalized and if vacant should used new purposes. New businesses should be small and of neighborhood scale.

Connectivity will be an important aspect within the historic area so that safe access to different uses can be made available to all. Small scale and locally owned commercial activity is desired.

Land Use

Designated land uses with the historic area include general commercial, single family residential, and civic/institutional.

Implementation Measures

- Encourage the preservation and re-use of historic structures
- Complete the National Register of Historic Places nomination
- Expand pedestrian access to amenities in the area by expanding the side walk system throughout the area
- Develop and distribute informational brochure



Rural Residential

Description

Rural residential style housing surrounds the historic area of Haralson. This consists of mostly mid-size to large estate style lot residential development and open space. No subdivision development exists within the city limits of Haralson.

Desired Development Patterns

A mix of housing sizes and even distribution of affordably priced housing throughout the community is needed. New residential development should match the design and quality of existing housing and reflect traditional neighborhood design (TND) principles. Conservation subdivisions would also be considered to conserve open space and rural character.

Land Use

The primary land use in the rural residential area is single family residential.

Implementation Measures

- Traditional Neighborhood Design (TND) Principles.
- Conservation subdivision guidelines
- Expand sidewalks system to connect residential areas to services and other amenities



Commercial

Description

Commercial uses occur in multiple areas of the City of Haralson such as in the historic area. The designated commercial character area exists where a large portion of land is designated and zoned primarily for commercial use. This is an ideal location for such activity as it is located along the Gateway Corridor and GA State Route 85. Commercial activity is currently scattered. Additional commercial use could be easily accommodated within the area which is already zoned commercial and currently vacant.

Desired Development Patterns

The City will encourage good design and landscaping as the corridor is highly visible and acts as an entry point into the city from the north. Commercial activity is encouraged to locate to this area which is currently zoned for commercial use and has needed access from GA State Route 85.

Land Use

The primary land uses for this area are general commercial and general industry.

Implementation Measures

- Extend the sidewalk network to connect different segments of the community
- Utilize low impact signage
- Encourage landscaping along the roadway



Light Industrial

Description

A small section of the City of Haralson contains light industrial activity which the possibility of expansion of industrial uses. The area is located near GA State Route 85 and adjacent to the CSX railroad.

Desired development patterns

Light industrial uses will be encouraged to expand and locate to this area where these uses are currently active and access to the highway and railroad is available. The incorporation of landscaping and site design to soften or shield views of industrial activities will be encouraged. Larger scale industrial uses will need sewer access which the City of Haralson currently does not offer.

Land Use

General industry and general commercial are the two primary land uses for this area.

Implementation Measures

- Maintain adequate roadways and access
- Encourage buffer and landscape requirements



Gateway Corridor

Description

Georgia State Route 85 travels the length of the city limits of Haralson. The highway also parallels the CSX railroad. The highway is the gateway into the community since it is the primary access road into Haralson and all the other city streets feed into it. Most commercial, civic and other public uses are located along the highway corridor.

Desired development patterns

The City of Haralson desires to have a welcoming entry corridor. Emphasis will be placed on aesthetic improvements, beautification, access, and signage. Improvement and expansion of the sidewalks to connect activities will be addressed along with appearance of commercial uses. Efforts will be made to incorporate welcome signage and landscaping at both north and south entrances into the city.

Land Use

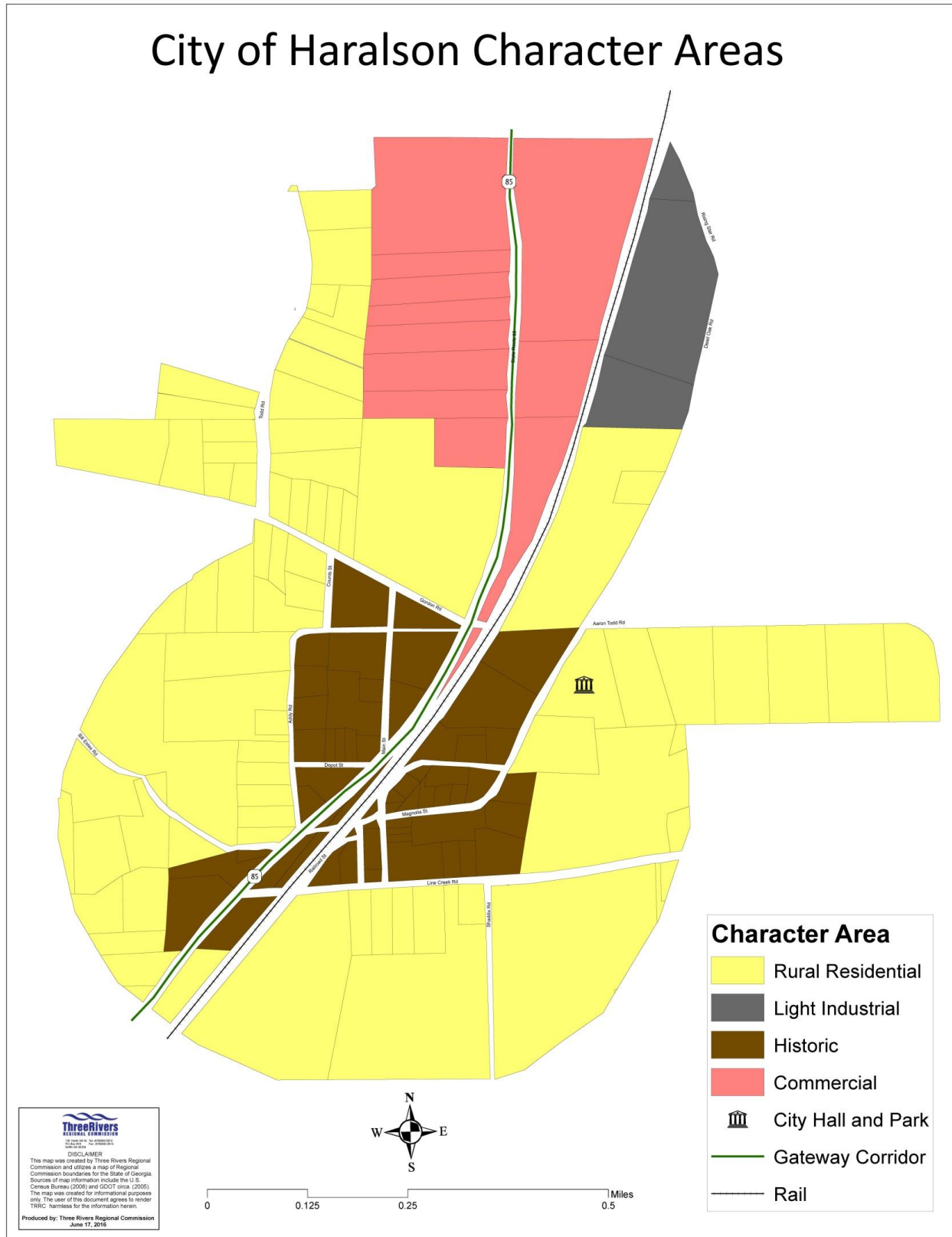
Along the Gateway Corridor, the primary land uses which are allowed include rural residential, general commercial and general industry.

Implementation Measures

- Expand sidewalks to connect all uses and activities
- Install directional and informational signage
- Install welcome signage at gateway entrances



Character Area Map



Community Work Program

The City of Haralson Community Work Program is a list of priority projects to be undertaken by the City within in the next five years. The Community Work Program includes the specific activity or project, an estimated timeframe in which to complete the activity, the responsible entity overseeing the activity, the estimated cost, and the likely source of funding.

Report of Plan Accomplishments (STWP 2011-2015):

A Report of Plan Accomplishments serves as a status report for the previous Short Term Work Program covering the years 2011-2015.

REPORT OF ACCOMPLISHMENTS - CITY OF HARALSON 2011-2015 SHORT TERM WORK PROGRAM						
	Project or Activity	Completed	Underway	Postponed	Not Accomplished	Explanation
1	Work with the Coweta County Chamber of Commerce to promote Haralson		X			Ongoing policy
2	Monitor feasibility of public wastewater if county ever offers service			X		Not feasible at this time
3	Annual street paving using priority list		X			Ongoing policy
4	Annual repairs and maintenance to sidewalks from priority list		X			Ongoing policy
5	Continue to report, recycle and meet state goal	X				
6	Research a long range recreation plan	X				
7	Research funding sources for recreation				X	Will address in the near future
8	Research law pertaining to slumlords and taxation	X				

9	Address dilapidated structures for threat to public safety	X				
10	Complete Uniform Land Use Plan with County and Coweta Cities	X				
11	Amend zoning ordinance as needed		X			Research and procedures underway
12	Create historic district			X		Not a recent priority
13	Review subdivision regulations for adequate density controls for wells prior to septic tanks				X	Not needed at this time due to the fact there are no current subdivisions or planned within the city limits

Community Work Program (2016-2021):

A new community work program was developed for the years 2016-2021.

CITY OF HARALSON - COMMUNITY WORK PROGRAM 2016-2021										
Project or Activity		2016	2017	2018	2019	2020	2021	Responsible Party	Cost Estimate	Funding Source
Community Facilities and Services	Research funding sources for recreation. Carried over from previous STWP.		X	X	X			City, RC	Staff time	General Fund, Grants
Land Use	Amend zoning ordinance. Carried over from previous STWP.	X	X					City, RC	Staff time	General Fund
Community Facilities and Services	Expand walking trails at city park			X	X	X	X	City, RC	\$100,000	General Fund, Grants
Economic Development and Tourism	Install welcome signage at city entry points			X	X	X	X	City	\$5,000	General Fund, Grants
Economic Development and Tourism	Install landscaping and other beautification measures along the Gateway Corridor			X	X	X	X	City	\$10,000	General Fund, Grants
Economic Development and Tourism	Develop a city informational and tourism brochure			X	X	X	X	City	\$1,000	General Fund, Grants
Community Facilities and Services	Create a city website and information sharing system	X	X					City	\$2,5000	General Fund

Project or Activity		2016	2017	2018	2019	2020	2021	Responsible Party	Cost Estimate	Funding Source
Community Facilities and Services	Roof repairs to city hall	X	X	X				City	\$2,000	General Fund
Community Facilities and Services	Address drainage issues at city hall		X	X	X			City	UNK	General Fund
Transportation	Re-pave Magnolia Street and Bill Estes Road			X	X	X	X	City, County	UNK	General Fund
Transportation	Repair sidewalks along GA Hwy 85 (Gateway Corridor)		X	X	X	X	X	City	\$50,000	General Fund
Transportation	Identify streets for sidewalk expansion		X	X	X	X	X	City	Staff time	General Fund
Community Facilities and Services	Lease historic school for continued use by the Child Care Network	X	X	X	X	X	X	City, Tenant	UNK	General Fund
Community Facilities and Services	Repair drainage pipes on Line Creek Road, Magnolia and Depot Streets.		X	X	X	X	X	City, County	UNK	General Fund

Appendices:

**Transportation Element – Coweta County Joint Comprehensive
Transportation Plan**

**Steering Committee, Public Hearings, Public Meeting
Sign-In Sheets**

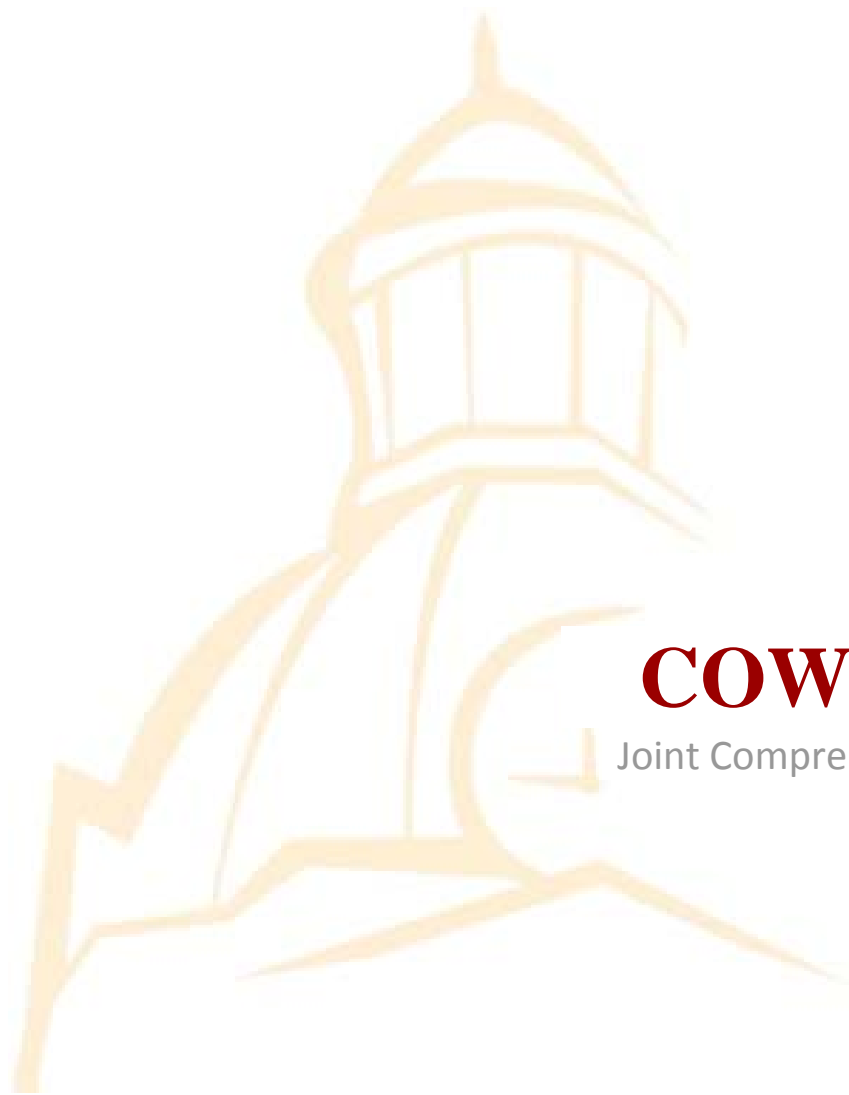
City of Haralson Comprehensive Plan Transportation Element

The City of Haralson is located within the Atlanta MPO (Metropolitan Planning Organization) which requires a Transportation Element to be included in the comprehensive plan update. The City of Haralson participated in the recent update to the Joint Coweta County Comprehensive Transportation Plan (CTP) and it will serve as the transportation element. A summary of the CTP can be found on the following pages of the appendix.

Joint Comprehensive Transportation Plan (CTP) Update - Plan Summary (FINAL)

The Plan Summary provides an overview of the entire transportation plan update process and details the suite of multimodal projects and strategies to meet the transportation needs of Coweta County and the municipalities of Grantville, Haralson, Moreland, Newnan, Senoia, Sharpsburg, and Turin through year 2040. The CTP Update Plan Summary and supporting technical documentation was adopted by the Coweta County Board of Commissioners on March 4, 2014, followed by adoptions by the various municipalities:

City of Senoia	Adopted March 3, 2014
Town of Sharpsburg	Adopted March 24, 2014
City of Newnan	Adopted March 25, 2014
Town of Moreland	Adopted April 1, 2014
City of Grantville	Adopted April 14, 2014
Town of Turin	Adopted March 18, 2014
City of Haralson	Adopted May 12, 2014



COWETA COUNTY

Joint Comprehensive Transportation Plan Update

Plan Summary

March 4, 2014



Table of Contents

Introduction	1
PLANNING PROCESS AND PURPOSE	1
STUDY AREA	1
<i>Study Area Map</i>	2
Vision & Goals	3
OVERALL CTP VISION.....	3
CTP UPDATE GOALS	4
Community Outreach & Input	5
ADVISORY COMMITTEES.....	5
LOCAL JURISDICTIONS	5
GENERAL PUBLIC.....	6
Land Use & Growth.....	7
<i>Future Development Map</i>	8
Existing Conditions & Identified Needs.....	9
ROADWAYS & BRIDGES.....	9
FREIGHT.....	9
PUBLIC TRANSPORTATION	9
BICYCLE NETWORK & PEDESTRIAN FACILITIES.....	10
LAND USE & TRANSPORTATION	10
Recommendations	11
PROJECT IDENTIFICATION	11
COMPARATIVE EVALUATION OF PROJECTS	12
ROADWAYS & BRIDGES.....	13
<i>Roadway & Bridge Project List</i>	13
<i>Interchange, New Location, Operational Upgrade & Widening/Capacity Projects (Coweta County)</i>	18
<i>Interchange, New Location, Operational Upgrade & Widening/Capacity Projects (City of Newnan)</i>	19
<i>Bridge, Railroad Crossing & Intersection Modification Projects (Coweta County)</i>	20

Table of Contents

(continued)

Recommendations *(continued)*

FREIGHT, RAIL & AVIATION	17
PUBLIC TRANSPORTATION	21
<i>Potential Transit Routes</i>	22
BICYCLE NETWORK & PEDESTRIAN FACILITIES.....	23
<i>Bicycle & Pedestrian Project List</i>	23
<i>Bicycle & Pedestrian Facility Projects (Coweta County)</i>	24
<i>Bicycle & Pedestrian Facility Projects (City of Newnan)</i>	25
<i>Bicycle & Pedestrian Facility Projects (Moreland, Senoia & Sharpsburg)</i>	26
COSTS & PHASING	27
FUNDING.....	28

Municipality Snapshots..... 29

CITY OF GRANTVILLE	29
CITY OF HARALSON	29
TOWN OF MORELAND	29
CITY OF NEWNAN	29
CITY OF SENOIA.....	30
TOWN OF SHARPSBURG.....	30
TOWN OF TURIN.....	30

CTP Documentation..... 30



The ultimate goal of the CTP Update is to develop a plan for a comprehensive transportation system that improves mobility, connectivity, and safety for the efficient movement of people and goods within and outside of Coweta County.

Introduction

PLANNING PROCESS AND PURPOSE

In 2005, the Atlanta Regional Commission (ARC) initiated a program to encourage counties and their municipalities to develop joint long-range transportation plans. Coweta County and the municipalities of Grantville, Haralson, Moreland, Newnan, Senoia, Sharpsburg and Turin completed a *Joint Comprehensive Transportation Plan (CTP)* in 2006. The jurisdictions came together again to complete the Joint CTP Update, which was initiated in October 2012 and completed in December 2013.

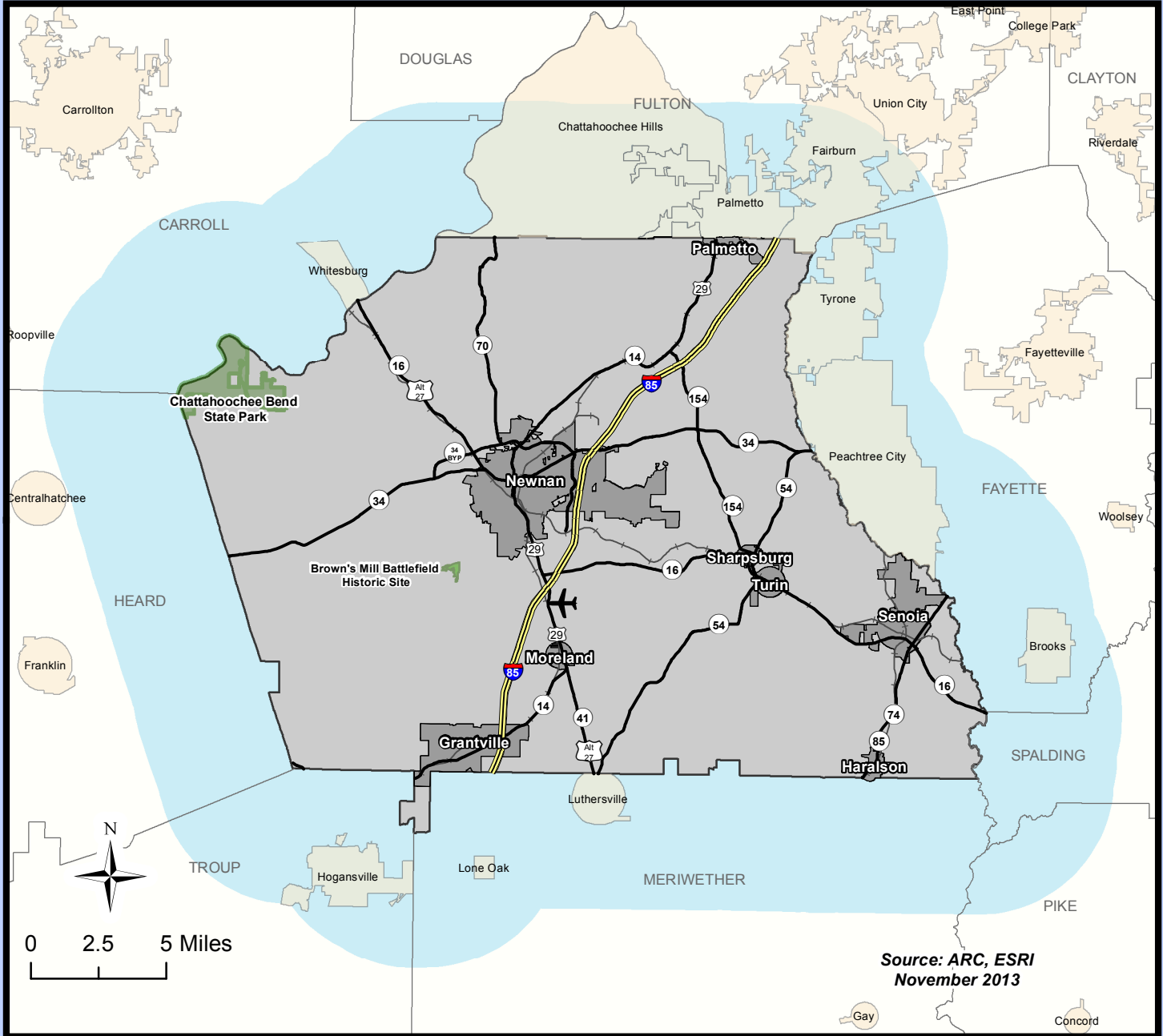
Building on the 2006 CTP, the Update assesses changes in demographics and transportation conditions over the intervening seven years in order to identify transportation needs and prioritize a suite of multimodal projects and strategies to meet those needs through year 2040. During the update process, Coweta County coordinated with other planning partners, including adjacent counties, the Georgia Department of Transportation (GDOT), Georgia Regional Transportation Authority, (GRTA), Three Rivers Regional Commission (TRRC), and ARC.

A CTP serves several important purposes. First, it provides a means of tying growth to infrastructure, pacing transportation improvements to when the growth actually occurs. It is a guide for ensuring the transportation system that needs to be in place to support existing and future growth is known and used when preparing project programs and funding. It also relates proposed improvements to “real world” funding availability. The CTP furthers the relationship between planning and programming at the local, regional and state level. The CTP Update process included a review of transportation and related plans and programs completed and/or adopted by the County and its jurisdictions over recent years. This provides for continuity in planning efforts, community goals, and desired results.

STUDY AREA

The CTP study area, shown on the next page, includes all of Coweta County and its seven municipalities. The City of Palmetto, located in both Fulton and Coweta counties, conducts its planning primarily with Fulton County and as such was included in the recent *South Fulton CTP*. A “buffer” area stretching several miles into adjacent counties ensured consideration of transportation conditions in areas that directly impact one another.

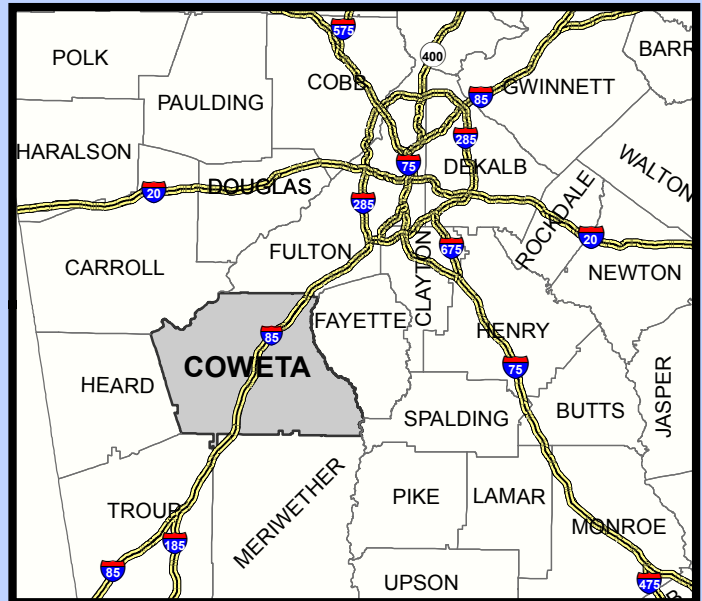
Coweta County Joint CTP Study Area



Source: ARC, ESRI
November 2013

Legend

- Study Area
- Bordering Cities
- Coweta Cities
- Coweta County
- Expressways
- Brown's Mill Battlefield Historic Site
- Chattahoochee Bend State Park
- Newnan- Coweta County Airport



Vision & Goals

OVERALL CTP VISION

The vision can best be defined as how the community sees itself in the future and the role of the transportation system in achieving its ideal. At the start of the transportation planning process, it is necessary to develop an overarching “community vision” that guides goals and objectives, and eventually, transportation project needs. Together, the vision and goals create a means of identifying and monitoring county transportation system performance and needs.

The CTP update effort began by relooking the vision and goals established during the 2006 CTP. Through coordination with staff representing Coweta County and its jurisdictions, as well as input from stakeholders, the 2006 CTP’s vision and goals were revised slightly so as to be more reflective of current conditions. The overall vision of the Coweta County Joint CTP Update is highlighted at right.



Coweta County will strive to develop a comprehensive transportation system that improves mobility, connectivity, and safety for the efficient movement of people and goods within, into, and out of Coweta County.

It will support economic development through enhanced access to job centers and other destinations, and will improve the operational efficiency of the existing transportation system through investments that are coordinated with local land use plans and policies.

The transportation system will provide multiple modes including public transit, multi-use trails, sidewalks, and bicycle lanes as viable alternatives to the automobile, and will focus on commute alternatives such as additional public transit, carpools, and vanpools for the citizens of the County and its municipalities.



CTP UPDATE GOALS

The goals, objectives and strategies are:

1. Promote coordination of land use and transportation

- Integrate transportation and land use planning
- Limit/control access and development that will negatively impact transportation corridors

2. Support economic and community development

- Develop a transportation system that supports the highest quality sustainable growth and new development opportunities
- Adopt appropriate policies, standards, and guidelines related to transportation system safety, access, efficiency, and sustainability
- Leverage transportation improvements to opportunities to attract businesses to the community

3. Improve accessibility, connectivity, and safety, for the movement of people and goods

- Assure the preservation, maintenance, and operations of existing multimodal transportation system
- Ensure adequate mobility and access to job centers and new development
- Promote improved freight movement to industrial parks and the interstate
- Prioritize and improve transportation corridors
- Improve east/west connectivity
- Create a distributed network that improves interconnectivity of major travel corridors
- Promote alternative modes of transportation to improve quality of life, air and water quality, the visual character, and foster more livable communities
- Provide mobility options for older adults, persons with special needs, persons with disabilities and zero car households



Goals are the long-term general outcomes of the CTP, consistent with the established vision.

They are supported by *objectives* (specific and measurable statements relating to the attainment of goals) and *implementation strategies* (actions undertaken to achieve the goals and objectives).

4. Develop a multimodal transportation system that maximizes community and regional support

- Identify realistic funding opportunities
- Include a sound financial plan and approach to phasing of projects
- Preserve and enhance the multimodal transportation system that includes public transportation
- Provide mobility options for older adults, persons with special needs, persons with disabilities and zero car households
- Integrate the CTP into the regional and state transportation planning efforts
- Improve interagency collaboration and communication between Coweta County and jurisdictions within and adjacent to the County
- Collaborate with federal, state, regional, local, and non-governmental partners
- Accurately classify roads and address potential infrastructure and land use changes associated with new interchanges on I-85 and other major improvements

5. Preserve and enhance the natural and social environment

- Promote alternative modes of transportation to improve quality of life, air and water quality, the visual character, and foster more livable communities
- Identify and preserve local, rural, scenic routes and state corridors

Community Outreach & Input

ADVISORY COMMITTEES

The Coweta County Joint CTP Update incorporated guidance from three committees: the Stakeholder Advisory Committee (SAC), Technical Advisory Committee (TAC), and Transit Technical Advisory Committee (TTAC). Each committee met three times, at key milestones, over the course of the study. The committees served as a check and balance on plan development in terms of political consensus and meeting the diverse needs of a broad-based constituency.

The SAC represented the larger community, helping to build partnerships and share information with major stakeholders. The SAC provided a continuing forum for direct input into the planning process, focusing on education, exchange, understanding, questioning and clarification.

The TAC included representatives from key transportation planning agencies, including Coweta County, its municipalities, regional planning partners (GDOT, ARC, GRTA and TRRC), and neighboring jurisdictions. It was formed to provide input and guidance on technical aspects.

The TTAC was assembled specifically to support the supplemental *Transit Needs and Feasibility Study*. Conducted simultaneous with the CTP Update, the study's focus was to identify and quantify transit needs and define investment strategies. Committee members represented public transit and human services transportation related agencies in Coweta, including the current operator of Coweta's demand response service, GRTA, ARC, TRRC, Southern Crescent Area Agency on Aging, and the Department of Human Services.

LOCAL JURISDICTIONS

Coordination with local jurisdictions occurred throughout the CTP Update process. Local staffs and officials were an important source of information on current and future land use and transportation system conditions, deficiencies and needs. Local jurisdiction representatives participated in TAC/SAC meetings, one-on-one meetings, small group meetings for local jurisdictions only, and the public open house meetings. Their staffs played a key role in clarifying transportation conditions, needs and improvement opportunities, as well as in responding to comments and questions from the general public. They also provided insight into ongoing and recent studies, including the *Newnan Livable Centers Initiative (LCI) Study* within downtown and nearby neighborhoods and the Town of Moreland's *Blueprints* plan with the Georgia Conservancy.

The Coweta Joint CTP Update incorporated guidance from three committees (the SAC, TAC, and TTAC), local jurisdiction representatives, and the general public.



GENERAL PUBLIC

Public participation is the foundation for any planning effort, and efforts must be made to encourage active and widespread participation. This is especially true with transportation planning, which must take into account different types of users, travel modes, geographic areas, and development patterns.

Public information meetings were conducted at two critical points in the CTP Update process. The County also maintained a web page devoted to the CTP Update on its website, where study materials were posted for review and an email address provided for comments.

An initial round of public meetings was conducted between July 25 and August 1, 2013. Hosted by the County Commissioner for each district, the five meetings were held over three evenings at the East Coweta Senior Center, Central Library, Madras Middle School, Newnan Centre, and Grantville Library. The public was informed of the study process and key findings to date, and asked to comment on the potential projects developed to respond to identified needs. A variety of handouts and maps, a formal presentation with Q&A period, and a comment form were provided. A total of 63 general citizens attended, with 12 comment forms received.

Immediately following the meetings, a “Virtual Public Information Meeting (PIM)” was posted to the County’s website. An eight-minute video summarized the key points presented during the actual meetings, including the maps and project lists. People were encouraged to submit comments through an online survey tool during the two-week comment period immediately following the public meetings. A total of 46 people submitted comments online.

A final public open house was held on November 7, 2013, at the Coweta County Fairgrounds Conference Center to present draft project recommendations. A brief presentation summarized the study process and recommendations, while project recommendations were identified by project type and geography on handouts and maps. The comment form included a place for attendees to list their top three priorities. A total of 23 individuals attended the meeting, including members of the public, city and county staff, and elected officials.

A summary of all comments received through the public meeting Q&A and comment forms and Virtual PIM online survey are included as appendices to the CTP’s technical reports.



Land Use & Growth

A primary goal of the CTP process is to coordinate and integrate land use and transportation.

Transportation needs must be considered within the larger context of community dynamics with regards to population and employment trends, land use and development characteristics, and associated factors. Essentially, the needs of the people who comprise the community translate into travel patterns, travel demand, and transportation facility needs. Furthermore, the broader plan for future development described in the local Comprehensive Plans provides a strong basis for projecting future needs.

One of the greatest determinants of transportation need is total population and population density. Transportation needs in sparsely populated rural areas are generally less than those of highly populated areas due to less demand. Coweta County has historically had a rural, agriculturally based economy and community structure, but this has changed dramatically in recent decades. ARC forecasts for 2040 show Coweta at nearly 250,000 in population, which equates to a 95 percent increase above the 2010 population of 127,317. According to projections, population and employment densities will likely continue to grow in the central and northeastern portion of Coweta while the southern and western portion remains less populous.



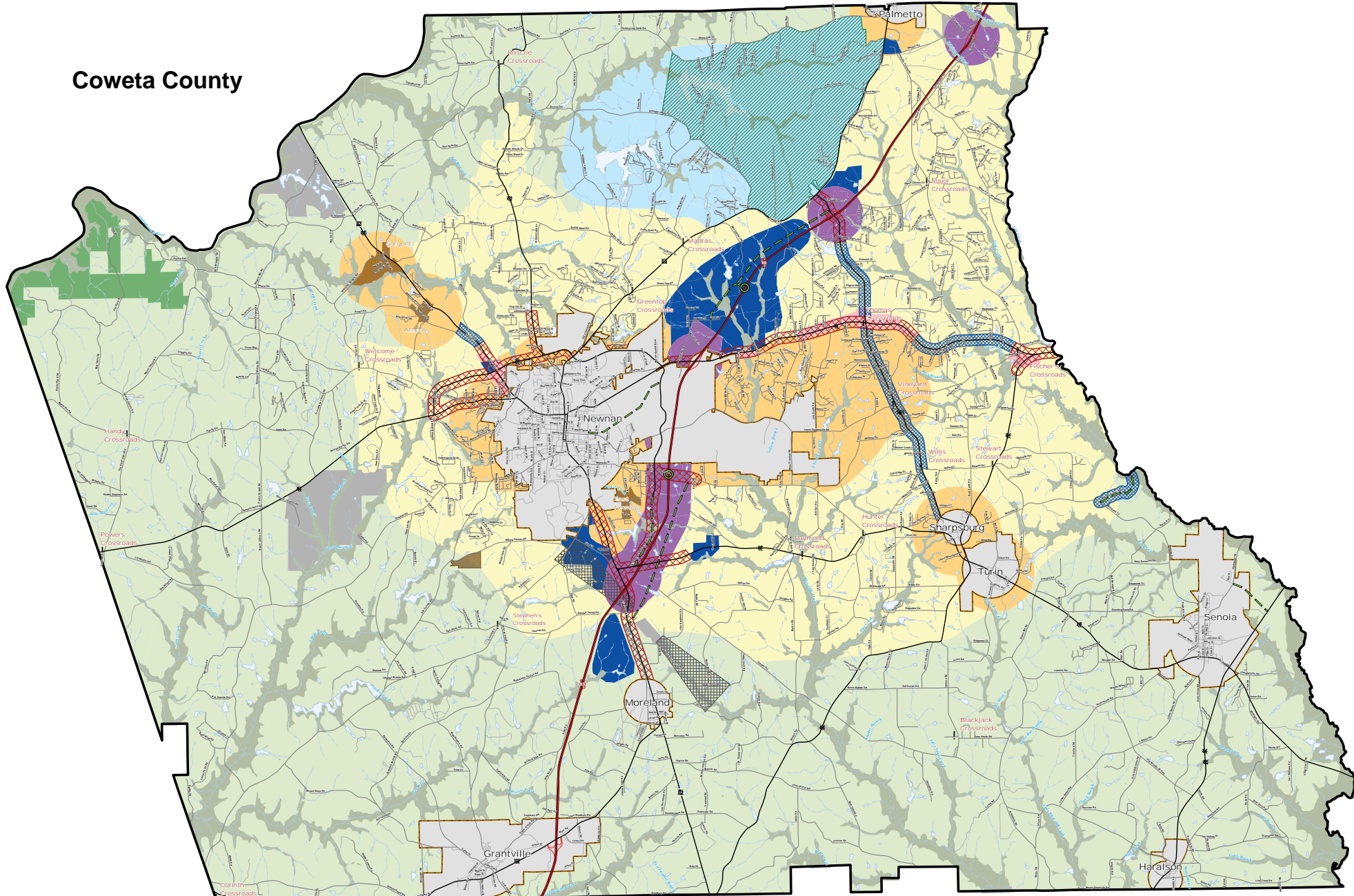
Coweta's population is concentrated in an area from Newnan northward and eastward to the county lines. In 2010, Coweta's population density was 511 people per square mile in this area, while the rural areas to the west and south had a density of 90 people per square mile.

Coweta County has also experienced growth in employment. However, employment growth since 2000 has been significantly reduced in comparison to 1990-2000 growth and has not kept pace with the rate of population growth. Discussions with local staff indicate the expectation for more aggressive employment growth in coming years, reflecting the community's ongoing efforts to promote additional economic development, particularly in the medical and education sectors.




Although Coweta's established land use patterns generally favor a vehicle-oriented transportation system, the Coweta County Future Development Map recommends that new development concentrate in compact, mixed use and crossroads service centers. These centers, which include the cities and towns, are intended to accommodate a mix of residential, commercial and institutional uses that reduce the need for automobiles and encourage walking and biking. Internal job growth can also positively impact transportation needs since shorter trips have a greater likelihood to be made by alternate modes.

Coweta County



**Coweta County 2006-2026
Comprehensive Plan**




JORDAN JONES & GOULDING

8 0 0.5 1 Miles

Future Development Map

Amended April 17, 2007

<ul style="list-style-type: none"> Planned Interchange Planned Roadway Crossroads Service Center Mill Village Interstate Gateway 	<ul style="list-style-type: none"> Runway Protection Zone Commercial Corridor Neighborhood Institutional and Service Corridor <p>Future Land Use</p> <ul style="list-style-type: none"> Employment Center - Commercial/Office Employment Center - Industrial 	<ul style="list-style-type: none"> Infill Neighborhood Low Density Infill Neighborhood Medium Density Transportation/Communication/Utilities Lakeside Residential Conservation Rural Conservation 	<ul style="list-style-type: none"> Interstate Ramp State Highway County Road Road River/Stream 	<ul style="list-style-type: none"> Brown's Mill Battlefield Lake/Pond Cedar Creek Zoning District Boundary Chattahoochee Bend State Park City Boundary County Boundary
--	---	---	--	--



Existing Conditions & Identified Needs

ROADWAYS & BRIDGES

A number of improvements to the roadway network have occurred since the previous CTP, including new/upgraded traffic signals, intersection geometric improvements, and additional capacity through new roadways and widening. While there are some areas where traffic volumes exceed capacity, overall the roadway network continues to operate at acceptable levels of service under existing and projected 2040 conditions. Locations where notable volumes or deficient levels of service exist are within the City of Newnan limits and on major state routes throughout the county, including SR 154, SR 34, and SR 16.

Intersections and roadway segments experiencing operational or safety deficiencies remain a top priority. In coordination with Georgia DOT, bridges are also closely monitored to identify and prioritize any requiring rehabilitation or replacement.

FREIGHT

Freight is a critical element of the transportation system that increasingly imposes significant mobility, safety, economic, and quality of life impacts on the county. Primary truck corridors in Coweta include I-85, US 27 Alt/ SR16, US 29, SR 16, SR 34, and SR 74/85. Several freight issues to be addressed include: funding for maintenance, rehabilitation, and replacement of transportation facilities that carry a majority of the freight in the county; conflict of truck traffic with local commercial and residential traffic; degradation of roads and bridges due to truck traffic; and continued coordination/outreach on ways to improve the existing freight system and allow for positive freight growth in the future.

PUBLIC TRANSPORTATION

Transportation mobility has improved in and around Coweta County since inception of two transit services available to all within the county. GRTA operates the Xpress commuter bus service weekdays between Newnan and Midtown/ Downtown Atlanta. Countywide demand response service is offered by Coweta Transit Dial-A-Ride. The utilization of current transit hints at opportunities to expand the fleet and services.



Coweta County continues to experience growth in employment, medical facilities, shopping centers, educational institutions, public and private services, and recreational amenities. Connecting citizens geographically with economic opportunity centers will be challenging under current conditions, particularly for those seeking alternatives to private vehicles and/or those without access to personal transportation.

The primary transit enhancement needs include:

- Increasing the Coweta Transit Dial-A-Ride fleet to accommodate growing travel demands
- Expanding and connecting local transit service to local and regional activity centers
- Connecting the GRTA Park & Ride Lot via expanded local circulator services

BICYCLE NETWORK & PEDESTRIAN FACILITIES

Bicycle facilities in Coweta have essentially not changed since the previous CTP, although significant work has occurred in planning for expanded bicycling infrastructure. Together, the *Coweta County Bicycle Plan* and *Coweta County Greenway Master Plan* serve as the foundation for future bicycle improvements. Securing capital funds for implementation remains the challenge.

Newer and recently upgraded sidewalks are in good condition, although some older sidewalks have deteriorated. Except in subdivisions and commercial developments, sidewalks are minimal, particularly outside the cities. As a result, the biggest need regarding pedestrian facilities is the need to add them. Additionally, most existing sidewalks in the cities do not meet Americans with Disabilities Act (ADA) requirements. If Coweta County wants to encourage walking, emphasis is needed for more aggressive development regulations and a larger local match to capture additional external funds for construction.

Overall, stakeholders identified safety as the first priority when discussing the needs of bicycle and pedestrian facilities in Coweta County. It was also recognized that the needs of bicyclists are different from those of pedestrians. Finally, the jurisdictions expressed the need for additional sidewalks to connect the gaps in the existing network and link to activity centers, particularly within the downtowns.



LAND USE & TRANSPORTATION

In recent years, Coweta County, Newnan and Senoia have adopted ordinances and development guidelines that promote important aspects of land use and transportation coordination. During this time, development activity has been significantly less than in prior years. As development begins to ramp up again, it will be important to implement adopted regulations, track their effectiveness, and refine regulations based on practical outcomes.

Coweta's Comprehensive Land Use Plan encourages growth to develop in a compact fashion and in population centers to maximize efficient expansion of infrastructure.

To realize the *Coweta County Comprehensive Plan's* goal of concentrating new development in mixed use centers and infill neighborhoods, mobility enhancements will be important. Priority should be given to roadway enhancements complementary to the Future Development Map, particularly within and connecting mixed use and infill areas. Expanded transit service where feasible, as well as bicycle and pedestrian facilities connecting between and within activity centers, will be needed. Coordination of land use, transportation and future expansion of sewer infrastructure, in concert with a sewer service area strategy, can further encourage the desired development outcome.

Recommendations

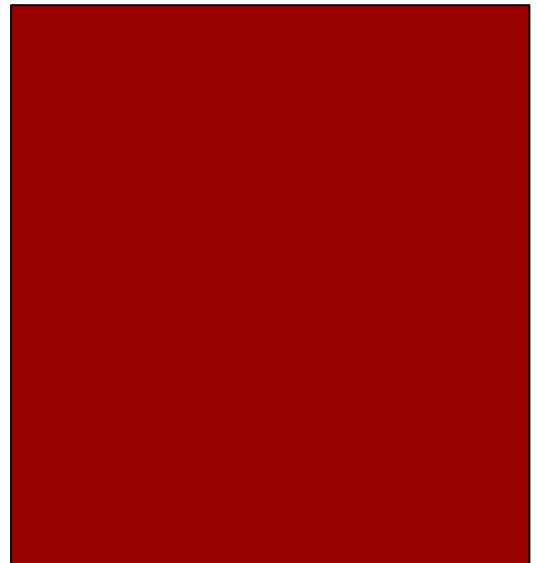
PROJECT IDENTIFICATION

A comprehensive list of potential projects to address the identified needs was developed and then refined to form a list of recommended projects. The project lists included in the currently adopted 2006 Coweta County Joint CTP, Coweta County SPLOST, and ARC short-term Transportation Improvement Program (TIP) and long-term Regional Transportation Plan (RTP) were the primary sources for existing project recommendations. Due to the long horizon period of many planning studies (often as much as 30 years), only a small fraction of recommended projects are typically completed within the relatively short update interval (every 5-8 years) of a CTP. As such, many recommended but as yet incomplete projects remain viable improvements and are carried forward into subsequent plans. Recommendations included within other planning efforts at the regional, local, and subarea levels are also important resources for project identification.

Stakeholder coordination and public involvement are important resources for project identification.

Combined with background socioeconomic and land use data, the travel demand model utilizes data on current and projected future traffic volumes and roadway characteristics and capacities to forecast current and future conditions across Coweta's entire roadway network. Through this process, locations with deficient operations can be readily identified for further analysis. Crash statistics also indicate locations for which increased safety may be achieved through targeted improvements. However, quantitative data alone cannot provide a sufficiently complete picture of existing and future conditions and needs, so qualitative assessments are also used.

Importantly, the stakeholders' and public's daily experiences using the transportation network can confirm what the data indicates. They ensure that problem areas do not get overlooked and that the community's vision and goals remain at the forefront during the prioritization process.



COMPARATIVE EVALUATION OF PROJECTS

Five key “factors” were used to comparatively evaluate individual roadway and bridge projects. Each factor consists of several “considerations,” which helped to highlight relative differences between similar projects.

The evaluation factors tie back to the overall CTP vision and goals, thereby ensuring a continued connection between goals and recommendations.



The factors and their considerations are:

1. Mobility

- Delay/constriction
- Congestion
- Access management

2. Safety

- Crashes
- Bridge condition
- Bicycle/pedestrian interactions

3. Connectivity

- Cross-county/inter-county connectivity
- Subarea connectivity (activity centers)
- “Fill the gaps”
- Transit access

4. Economic Development

- Freight routes
- Improved access to commercial/industrial/job sites

5. Community & Environment

- Consistent with land use
- In another approved plan
- Access to alternate modes and community facilities

Individual projects were scored for each factor on a low-to-high scale of 1 to 5. As a way for some factors to provide relatively more impact on the total score than others, the factors were weighted from 3 (maximum) to 1 (minimum), as follows: 3=mobility and safety; 2=connectivity and economic development; 1=community and environment. When complete, a project’s total score ranged from 11 to 55, with higher scores indicating relatively greater need for the project.

This scored approach to project evaluation was a primary input to the prioritization process for roadway and bridge recommendations. However, additional knowledge gained from local staff and professional experience, stakeholder coordination and public outreach also played an important role in project prioritization.

This type of scored evaluation was not conducted for freight, bicycle/pedestrian, or transit recommendations. There are a number of reasons for this, several of which are: (1) prioritization and implementation may primarily be done locally by the county and the towns/cities; (2) funding limitations and schedule requirements necessitate extreme flexibility in project selection and initiation, and (3) other regional considerations and partners are involved.

ROADWAYS & BRIDGES

The list of proposed roadway recommendations includes projects to improve the safety and operational efficiency of the roadway network while decreasing congestion. Projects are categorized as follows:



- Capacity Additions = 18
 - New Interchange (I) = 2
 - New Location Roadway (N)= 11
 - Road Widening/Capacity (C) = 5
- Operations Improvements = 65
 - Operational Upgrade* (OP) = 25
 - Intersection Modification (M) = 40
- Corridor Improvements** (COR) = 7
- Bridge Upgrades (B) = 30
- Railroad Crossings (R) = 7

* Examples include safety/shoulder/intersection radii improvements and addition of sidewalks/bike lanes

**Further detailed analysis required; could include a combination of widening, operational upgrades, intersection modifications and new location roadways

ROADWAY & BRIDGE PROJECT LIST

Map ID	Roadway/Location	Jurisdiction	Phase
NEW INTERCHANGES			
I1	Poplar Rd at I-85 (Mile Marker 44) and widening from Newnan Crossing Bypass to Newnan Crossing Blvd	Coweta Co	Short
I2	Amlajack Interchange at I-85 (Mile Marker 49)	Coweta Co	Short
NEW LOCATION ROADWAY			
N1	Coweta Industrial Pkwy Extension from Coweta Industrial Pkwy terminus to Amlajack Blvd Extension (2 lanes)	Coweta Co	Short
N2	Madras Connector from Amlajack Blvd Extension to US 29 and Happy Valley Cir (2 lanes)	Coweta Co	Mid
N3	Amlajack Blvd Extension from Amlajack Blvd termini to Coweta Industrial Pkwy (2 lanes)	Coweta Co	Short
N4	Hollz Pkwy Extension from Hollz Pkwy termini to Amlajack Blvd Extension (4 lanes)	Coweta Co	Short
N5	McIntosh Pkwy Extension from McIntosh Pkwy termini near Newnan Crossing Bypass to McIntosh Pkwy termini near Farmer St (4 lanes)	Newnan	Short
N6	Andrew St Extension from Augusta Dr to East Washington St (2 lanes)	Newnan	Short
N7	Campus Dr Extension from Campus Dr termini/Turkey Creek Rd to SR 16 (2 lanes)	Coweta Co	Long
N8	Newnan Bypass Extension from Turkey Creek Rd to SR 16 (4 lanes)	Coweta Co	Short
N9	US 29 Connector from US 29 north of Moreland to Bethlehem Church Rd (2 lanes)	Coweta Co	Mid
N10	Vernon Hunter Pkwy from McIntosh Trail to TDK Blvd Extension	Coweta Co	Mid
N11	New roadway north of Senoia from end of Ivy Ln to SR 74/85 (2 lanes)	Senoia	Long

Map ID	Roadway/Location	Jurisdiction	Phase
ROADWAY WIDENING/CAPACITY			
C1	SR 154 from SR 34 to US 29 (to 4 lanes)	Coweta Co	Mid
C2	SR 154 from Lower Fayetteville Rd to SR 34 (to 4 lanes)	Coweta Co	Mid
C3	Lower Fayetteville Rd (Phase 1) from Newnan Lakes Blvd to Shenandoah Blvd (to 4 lanes)	Newnan	Mid
C4	Newnan Crossing Blvd East from Stillwood Dr to Poplar Rd (to 4 lanes)	Newnan	Mid
C5	PROJECT REMOVED...NUMBER NO LONGER IN USE	-----	-----
C6	SR 16 from US 29 to I-85 (to 4 lanes)	Coweta Co	Short
OPERATIONAL UPGRADE			
OP1	Thomas Powers Rd/Hewlette South Rd from SR 34 to Bud Davis Rd	Coweta Co	Long
OP2	Bud Davis Rd from Mt. Carmel Rd/ Hewlette South Rd to Chattahoochee Bend State Park entrance	Coweta Co	Long
OP3	Mt. Carmel Rd from Bud Davis Rd to Payton Rd	Coweta Co	Long
OP4	Payton Rd from Mt. Carmel Rd to Boone Rd	Coweta Co	Long
OP5	Boone Rd from Payton Rd to Wagers Mill Rd	Coweta Co	Long
OP6	Wagers Mill Rd from Boone Rd to SR 16/Alt 27	Coweta Co	Long
OP7	Macedonia Rd/Buddy West Rd from SR 16 to Happy Valley Cir, including intersection modification at SR 70	Coweta Co	Mid
OP8	Happy Valley Cir from Buddy West Rd to Hal Jones Rd	Coweta Co	Mid
OP9	Cannongate Rd from Palmetto-Tyrone Rd to Collinsworth Rd (CR548), with intersection realignment at Collinsworth Rd	Coweta Co	Mid
OP10	Fischer Rd (CR 40) from SR 54 to Palmetto-Tyrone Rd	Coweta Co	Short
OP11	SR 34 from Jefferson St/Ashley Park to SR 154	Newnan/ Coweta Co	Long
OP12	SR 54 from SR 154 to SR 34	Sharpsburg/ Coweta Co	Long
OP13	Poplar Rd from Newnan Crossing Blvd to SR 16	Coweta Co	Mid
OP14	Sullivan Rd from Lower Fayetteville Rd to SR 34 East	Newnan/ Coweta Co	Long
OP15	Marion Beavers Rd from SR 16 to SR 154	Coweta Co	Long
OP16	SR 154 from Old Hwy 16 to Lower Fayetteville Rd	Sharpsburg/ Coweta Co	Long
OP17	SR 154 from Old Hwy 16 to SR 54	Sharpsburg	Long
OP18	Willis Rd/Stewart Rd from SR 154 to SR 54	Coweta Co	Long
OP19	Reese Rd from McIntosh Trl to SR 54	Coweta Co	Long
OP20	McIntosh Trl from SR 54 to Stallings Rd	Sharpsburg/ Coweta Co	Mid
OP21	Stallings Rd from Couch St to McIntosh Trl	Senoia/ Coweta Co	Long
OP22	US 29/27Alt from I-85 to Airport Rd	Coweta Co	Mid
OP23	US 29 from SR 41 to Church St	Moreland	Long
OP24	Railroad St from Main St to Harris St, including College St to Us 29 and Harris St to cemetery	Moreland	Mid
OP25	US 29 from LaGrange St to Griffin St/Clarence McCambry Rd, including CSX RR overpass bridge	Grantville	Long

Map ID	Roadway/Location	Jurisdiction	Phase
INTERSECTION MODIFICATIONS			
M1	US 29 at Tommy Lee Cook Rd	Palmetto	Long
M2	Collinsworth Rd at Weldon Rd	Palmetto	Short
M3	Fischer Rd (CR 40) at Andrew Bailey Rd	Coweta Co	Short
M4	Herring Rd at US 29 and CSX Railroad	Coweta Co	Short
M5	SR 16 at Witcher Rd and Glover Rd	Coweta Co	Short
M6	SR 34 West at SR 34 Bypass and Ishman Ballard Rd (roundabout)	Coweta Co	Long
M7	SR 34/Franklin Rd at Belt Rd and Norfolk Southern Railroad	Newnan	Long
M8	SR 34/Franklin Hwy at Pete Davis Rd and Thigpen Rd	Coweta Co	Long
M9	SR 34/Franklin Hwy at Welcome Rd	Coweta Co	Long
M10	Old Corinth Rd and Belk Rd at Smokey Rd	Coweta Co	Short
M11	Greenville St/US 29 at Sewell Rd	Newnan	Long
M12	Five Points Intersection Reconfiguration—East Newnan Rd at Poplar Rd, Turkey Creek Rd, and Martin Luther King, Jr. Dr (roundabout)	Newnan/ Coweta Co	Short
M13	SR 16 at Pine Rd	Coweta Co	Short
M14	SR 34/Bullsboro Dr at Amlajack Blvd and Parkway North	Coweta Co	Short
M15	I-85 Southbound Off Ramp at SR 34/Bullsboro Dr	Newnan	Short
M16	SR 34 at Baker Rd and Sullivan Rd	Coweta Co	Long
M17	Lora Smith Rd at SR 34	Coweta Co	Short
M18	Lora Smith Rd at Lower Fayetteville Rd	Coweta Co	Short
M19	Lower Fayetteville Rd at Fischer Rd/SR 34 East	Coweta Co	Mid
M20	Lower Fayetteville Rd at Parks Rd	Coweta Co	Short
M21	US 29 at Corinth Rd	Newnan	Long
M22	Poplar Rd at Parks Rd	Coweta Co	Short
M23	SR 16 at Turkey Creek Rd	Coweta Co	Long
M24	SR 154 at Old Hwy 16 (roundabout)	Sharpsburg	Long
M25	SR 154 at Terrentine St	Sharpsburg	Long
M26	SR 16 at SR 54 (roundabout)	Turin	Short
M27	SR 54 at Johnson Rd	Coweta Co	Long
M28	SR 16 at Elders Mill Rd	Coweta Co	Long
M29	SR 16 at Pylant St	Senoia	Short
M30	Rockaway Rd at Heritage Point Pkwy	Senoia	Short
M31	SR 74/85 at Seavy St	Senoia	Long
M32	Eastside School Rd at Old Hwy 85	Coweta Co	Short
M33	Gordon Rd at Elders Mill Rd	Coweta Co	Short
M34	SR 74/85 at Gordon Rd	Haralson	Long
M35	Line Creek Rd at Shaddix Rd	Haralson	Short
M36	Line Creek Rd at Main St	Haralson	Short
M37	SR 14 at SR 41 (roundabout)	Coweta Co	Long
M38	Corinth Rd at West Grantville Rd, Earl North Rd, and Hannah Rd	Coweta Co	Short
M39	US 29 at Lowery Rd	Grantville	Long
M40	Griffin St at Charlie Patterson Rd (roundabout)	Grantville	Short

Map ID	Roadway/Location	Jurisdiction	Phase
CORRIDOR IMPROVEMENTS			
COR1	SR 16 from location in Carroll County to SR 34 Bypass	Coweta Co	N/A
COR2	SR 34 Bypass from SR 34 (Franklin Highway) to US 27 Alt/SR 16 (Carrollton Hwy)	Coweta Co	N/A
COR3	Ishman Ballard Rd from Smokey Rd to SR 34	Coweta Co	N/A
COR4	Southwest Newnan Bypass from US 29 to Smokey Rd at Ishman Ballard Rd	Coweta Co	N/A
COR5	SR 16 from I-85 to Poplar Rd	Coweta Co	N/A
COR6	SR 16 from Poplar Rd to Carl Williams Rd	Sharpsburg/ Turin/ Senoia/ Coweta Co	N/A
COR7	SR 16 from Carl Williams Rd to location in Spalding Co	Coweta Co	N/A
BRIDGE UPGRADES			
B1	Payton Rd , 9.2 miles NW of Newnan	Coweta Co	N/A
B2	Boone Rd , 8.9 miles NW of Newnan	Coweta Co	N/A
B3	Mt. Carmel Rd at Thomas Creek	Coweta Co	Short
B4	Summers McKoy Rd at Thomas Creek	Coweta Co	Short
B5	Main St , 2.5 miles NW of Newnan over railroad	Coweta Co	N/A
B6	Henry Bryant Rd at Wahoo Creek	Coweta Co	N/A
B7	Duncan Rd at Cedar Creek Tributary	Coweta Co	Short
B8	Happy Valley Cir , 6.0 miles N of Newnan	Coweta Co	N/A
B9	J.D. Walton Rd at Caney Creek	Coweta Co	Short
B10	Corinth Rd at New River	Coweta Co	N/A
B11	Chandler Rd , 4.0 miles SW of Newnan	Coweta Co	N/A
B12	Holbrook Rd at Sandy Creek	Coweta Co	Short
B13	Potts Rd at Sandy Creek	Coweta Co	Short
B14	Bobo Banks Rd at Messiers Creek	Coweta Co	N/A
B15	Bohannon Rd at Messiers Creek	Coweta Co	Short
B16	Minnie Sewell Rd at Yellow Jacket Creek	Coweta Co	Short
B17	Bexley Rd at Yellow Jacket Creek	Coweta Co	Short
B18	Bradbury Rd at Yellow Jack Creek	Coweta Co	N/A
B19	Lowery Rd Extension , 2.5 miles E of Grantville	Coweta Co	N/A
B20	Allen Rd , 0.5 miles N of Grantville	Coweta Co	N/A
B21	PROJECT REMOVED...NUMBER NO LONGER IN USE	-----	-----
B22	Hines Rd , 4.0 miles S of Moreland	Coweta Co	N/A
B23	Gordon Rd at White Oak Creek	Coweta Co	N/A
B24	Gordon Rd at Abandoned Railroad	Coweta Co	N/A
B25	Moore Rd at Little White Oak Creek	Coweta Co	Short
B26	McDonald Rd at Pine Creek (box culvert replacement)	Coweta Co	Short
B27	Lower Fayetteville Rd at Shoal Creek Tributary (culvert replacement)	Coweta Co	N/A
B28	SR 54 at Shoal Creek	Coweta Co	N/A
B29	McIntosh Trl at Keg Creek	Coweta Co	N/A
B30	PROJECT REMOVED...NUMBER NO LONGER IN USE	-----	-----
B31	SR 74/85 at Central of Georgia rail line between SR 16 and Seavy St	Senoia	Short
B32	Gray Girls Rd , 4.0 miles SE of Senoia	Coweta Co	N/A

Map ID	Roadway/Location	Jurisdiction	Phase
RAILROAD CROSSING			
R1	Walt Sanders Rd (Railroad crossing 050420R) (add warning device)	Coweta Co	N/A
R2	Walt Sanders Rd (Railroad crossing 050419W) (add warning device)	Coweta Co	N/A
R3	Johnson Cir (Railroad crossing 050408J) (add warning device)	Coweta Co	N/A
R4	Main St (Railroad crossing 050458M) (upgrade crossing)	Grantville	N/A
R5	Seavy St at CSX (upgrade crossing)	Senoia	N/A
R6	Johnson St at CSX (upgrade crossing)	Senoia	N/A
R7	Seavy St at Norfolk Southern (upgrade crossing)	Senoia	N/A
OTHER			
N/A	Signage inventory and wayfinding study	Coweta Co and Cities	N/A
N/A	Parking study	Moreland	N/A
N/A	Off-system safety improvements at 10 locations in Coweta and Heard Co.	GDOT	N/A

Phasing: short-term=2014-2020; mid-term = 2021-2030; long-term = 2031-2040

Note: N/A is shown in the Phase column for bridge and rail crossing projects because those projects are prioritized and selected for funding based on safety and rail crossing programs administered by GDOT.

FREIGHT, RAIL & AVIATION

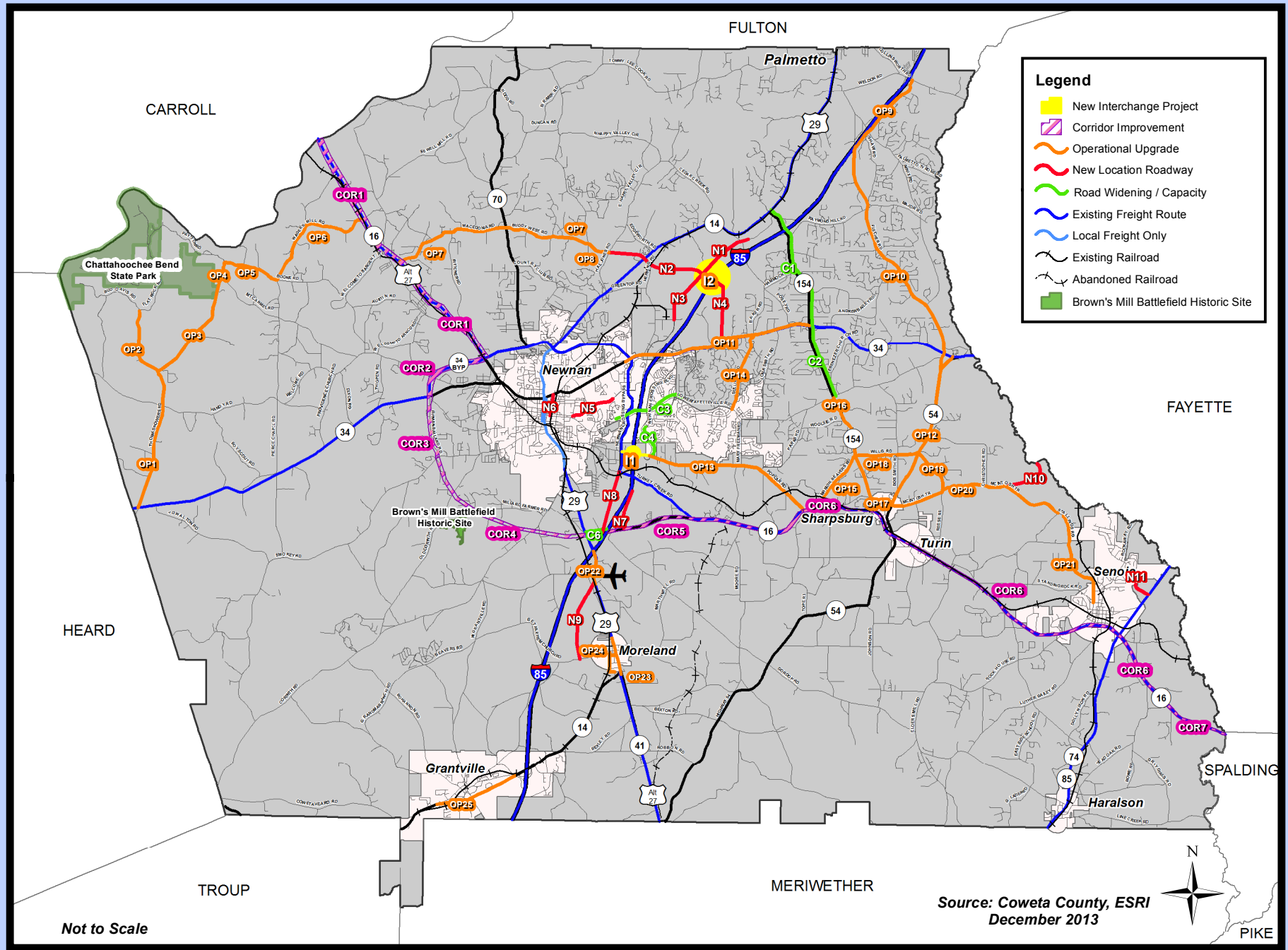
Freight movement in Coweta predominantly involves trucking and railroads. The CTP's freight recommendations are designed to respond to several specific needs:

- Optimize economic growth by ensuring a balanced and efficient goods transport system
- Provide roadway and intersection facilities that maintain safe and efficient freight access and mobility
- Improve the roadway network to accommodate growing freight transport, delivery and transfer needs
- Minimize the impact of freight movement in environmentally sensitive and populated areas

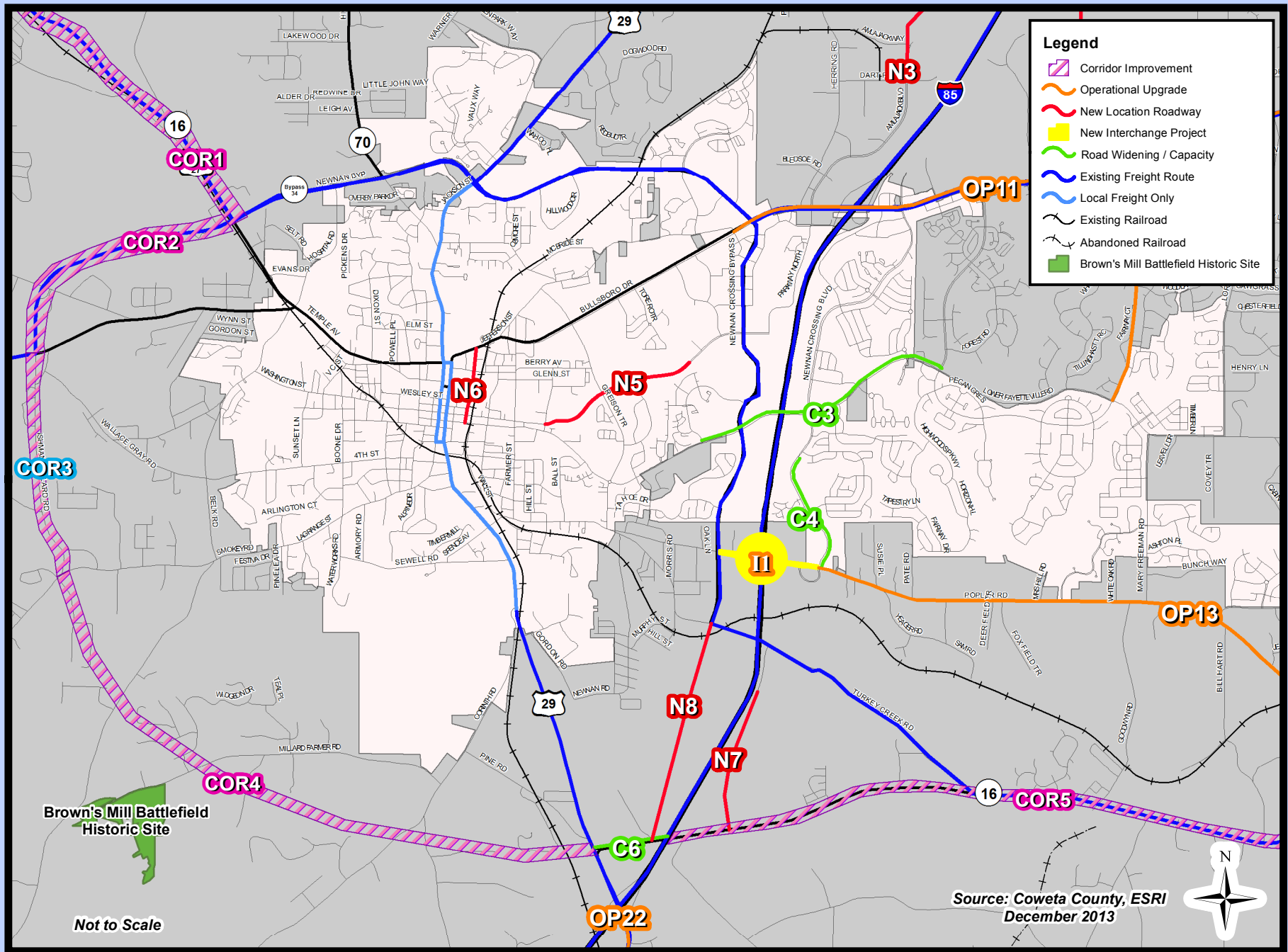


The CTP freight recommendations are:

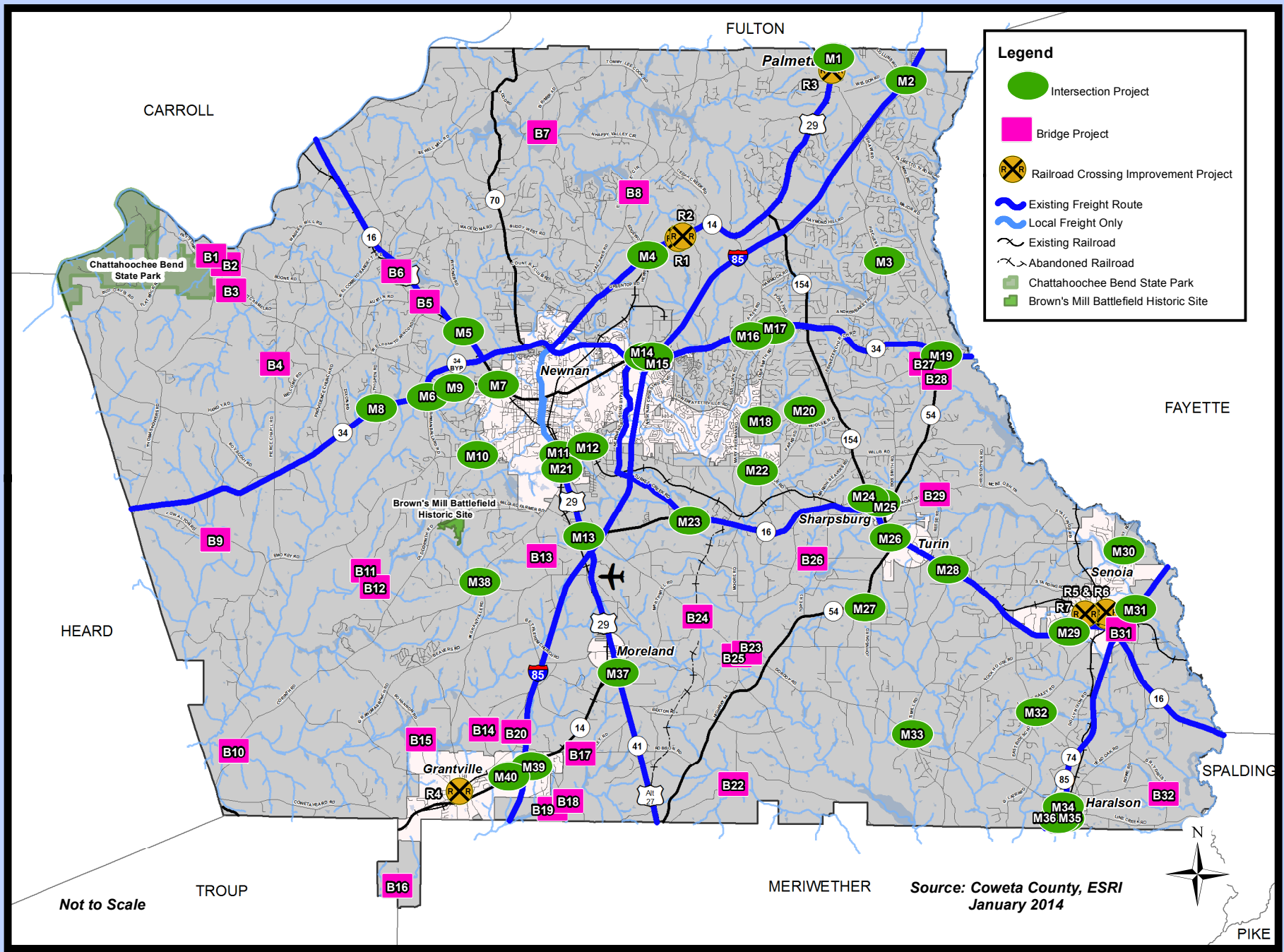
- Develop a Local Freight Route Network to include designated State/Regional Freight Routes and other critical freight corridors
- Designate Local Freight Routes as appropriate
 - Hwy 154 from I-85 westward to US 29
 - Collinsworth Road/Weldon Road from I-85 westward to US 29
 - When Amlajack Boulevard Interchange is constructed, add Amlajack Boulevard, Coweta Industrial Parkway, and Holz Parkway
- When Newnan Bypass Extension is constructed, revise Regional Truck Route Network to add Newnan Bypass Extension from Turkey Creek Road to SR 16 and SR 16 from I-85 to US 29, and remove Turkey Creek Road
- Periodically evaluate Regional Truck Route Network in Coweta with ARC and GDOT
- Continue to monitor at-grade rail crossings to evaluate whether changing conditions in roadway traffic volumes or rail traffic volumes result in greater potential for conflicts
- Upgrade at-grade railroad crossings at key vehicular traffic locations to improve safety and mobility for roadways and rail (refer to Railroad Crossings in the roadway recommendations list for specific locations)



**Coweta County Joint Comprehensive Transportation Plan Update
Interchange, New Location, Operational Upgrade, and Widening/Capacity Projects (Coweta County)**



**Coweta County Joint Comprehensive Transportation Plan Update
Interchange, New Location, Operational Upgrade, and Widening/Capacity Projects (City of Newnan)**



Coweta County Joint Comprehensive Transportation Plan Update
Bridge, Railroad Crossing, and Intersection Modification Projects (Coweta County)

Strategically located along US 29 and adjacent to I-85, the Newnan-Coweta Airport is a transportation facility that supports economic growth in Coweta County.



The Newnan-Coweta Airport maintains a Capital Improvement Plan (CIP), updated yearly, detailing needed airport improvements. Need and support for the CIP improvements exists, but a lack of available funding has caused delays. The Airport Authority, supported by the County, will continue to apply for funding for their CIP projects in an effort to continuously expand and improve facilities. In addition, the operational upgrades to US 29/US 27Alt from I-85 to Airport Road, included in the CTP’s roadway recommendations, supports improved access to the airport.

TRANSIT STRATEGIES

The focus of transit activities was on developing broad “strategies” covering many different service types to increase access to public transportation opportunities. Strategies fall into one of three categories—expanded service, new service, and service coordination and optimization—and include fixed-route transit circulators/shuttles, vanpool/ rideshare programs, and subscription services.

Expanded Services

- Increase demand response service to high demand areas
- GRTA service to Hartsfield-Jackson Atlanta International Airport
- Add park and ride lot at Exit 51 (serviced as part of existing Newnan Xpress bus service)

New Services

- Fixed route/route deviation service—Downtown Newnan to/from intown neighborhoods and Piedmont Newnan Hospital/West Georgia Technical College
- Newnan Trolley shuttle service—Downtown Newnan/Newnan Centre/Ashley Park
- Express connector service—Downtown Newnan/Bullsboro Corridor/Newnan Crossing/Ashley Park, with morning/afternoon connection to GRTA Xpress park and ride lot
- Circulator service—Ashley Park/Newnan Crossing/Piedmont Newnan Hospital/West Georgia Technical College
- Express shuttle service—Senoia/Sharpsburg/Bullsboro Corridor/Downtown Newnan
- Shuttle service—University of West Georgia’s Newnan and Carrollton (main) campuses

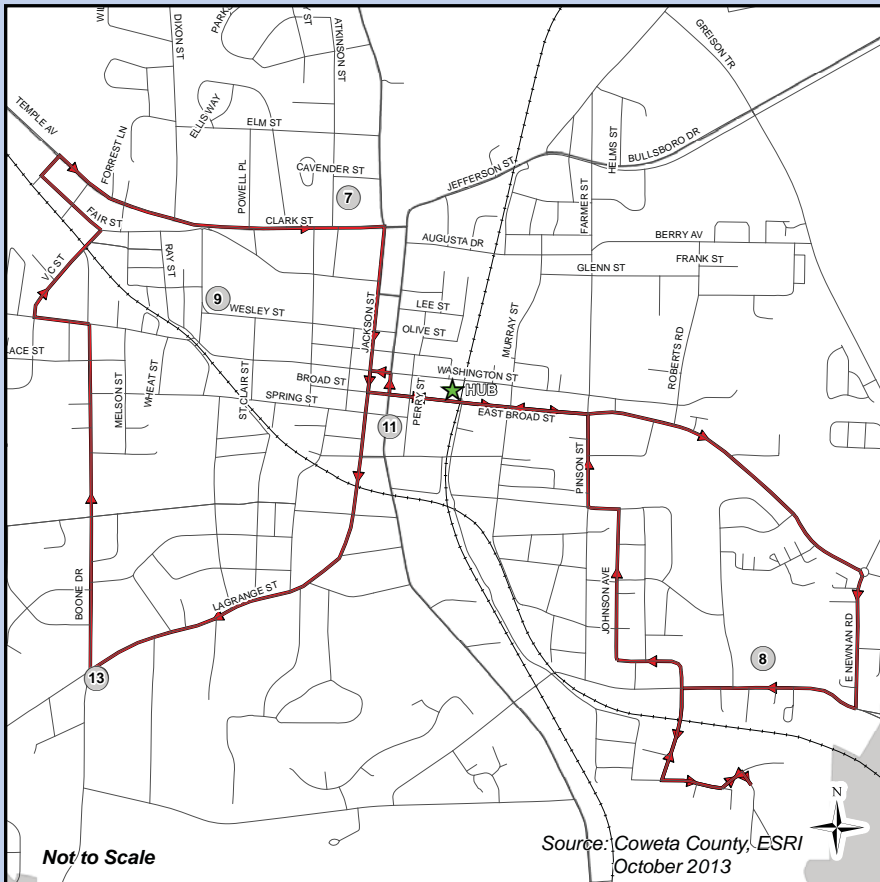
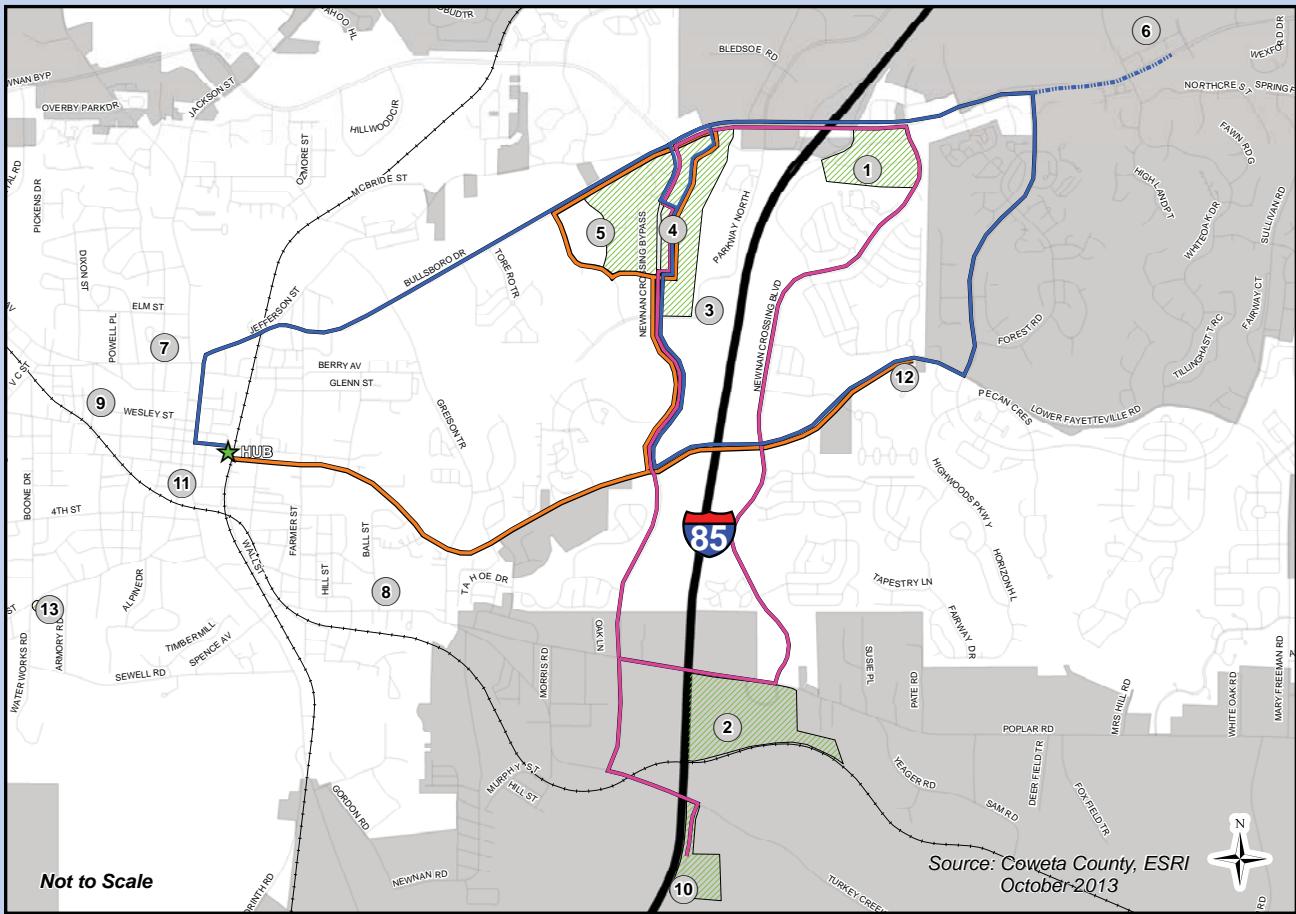


Service Coordination and Optimization

- Mobility Manager
- Private sector partnerships
- Marketing and service referral program

Full implementation of recommended strategies is likely to be accomplished in a phased fashion over the next 15-25 years, with continued assessment of the type and geographical distribution of needs.

The success of current Coweta County Transit and GRTA Xpress services, combined with continuing requests for additional services, indicates the need to expand existing public transit services as warranted by demand.



- ### Points of Interest
1. Walmart Shopping Center
 2. Piedmont Newnan Hospital
 3. Cancer Treatment Centers of America
 4. Newnan Crossing Shopping Center
 5. Ashley Park Shopping Center
 6. GRTA Park and Ride Lot
 7. Future Location of UWG - Newnan Campus
 8. Central Education Center
(Current location of W. Georgia Technical College)
 9. Newnan/Coweta Boys and Girls Club of America
 10. New Campus of West Georgia Technical College
 11. Newnan Post Office
 12. The Newnan Centre
 13. Newnan High School

- ### Legend
- Points of Interest
 - HUB
 - Bullsboro Express
 - GRTA Xpress Connection
 - Bullsboro/Poplar Circulator
 - Newnan Centre/Ashley Park Trolley
 - Intown Neighborhood Loop
 - Existing Railroad
 - Abandoned Railroad

Coweta County Joint Comprehensive Transportation Plan Update Potential Transit Routes

BICYCLE NETWORK & PEDESTRIAN FACILITIES

Coweta County has undertaken efforts in recent years to expand its bicycle and pedestrian network, most notably through the approved Greenway Master Plan. Bicycle and pedestrian facility recommendations aim to tie together existing and proposed facilities by connecting points of interest and upgrading/rehabilitating the existing network. The focus of the CTP Update’s bicycle/pedestrian recommendations is to:

- “Fill the gaps” in the sidewalk network in cities/towns and activity centers
- Prioritize Greenway Master Plan multi-use path segments for construction
- Where feasible and appropriate, evaluate applicable roadway widening and repaving projects using “Complete Streets” criteria to consider adding bicycle lanes/sidewalks
- Install “Share the Road” signage along designated bicycle routes
- Provide for bicycle racks at commercial and industrial developments



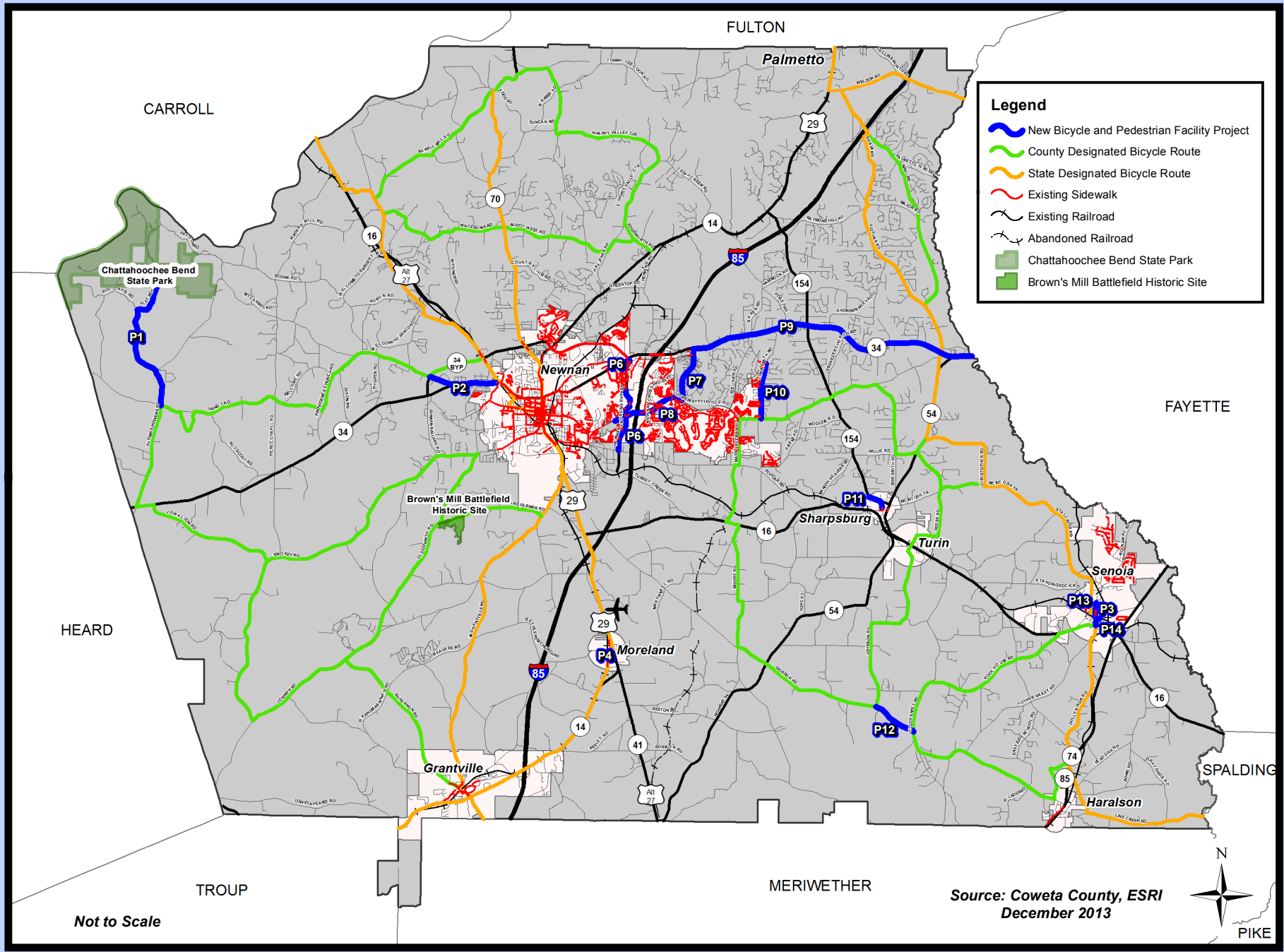
Together with these general strategies, the CTP Update recommends 14 specific bicycle and pedestrian projects to improve connections on existing and proposed facilities.

An important consideration for all bicycle and pedestrian facilities remains the safety of the network for all users, whether bicyclist, pedestrian or motorist.

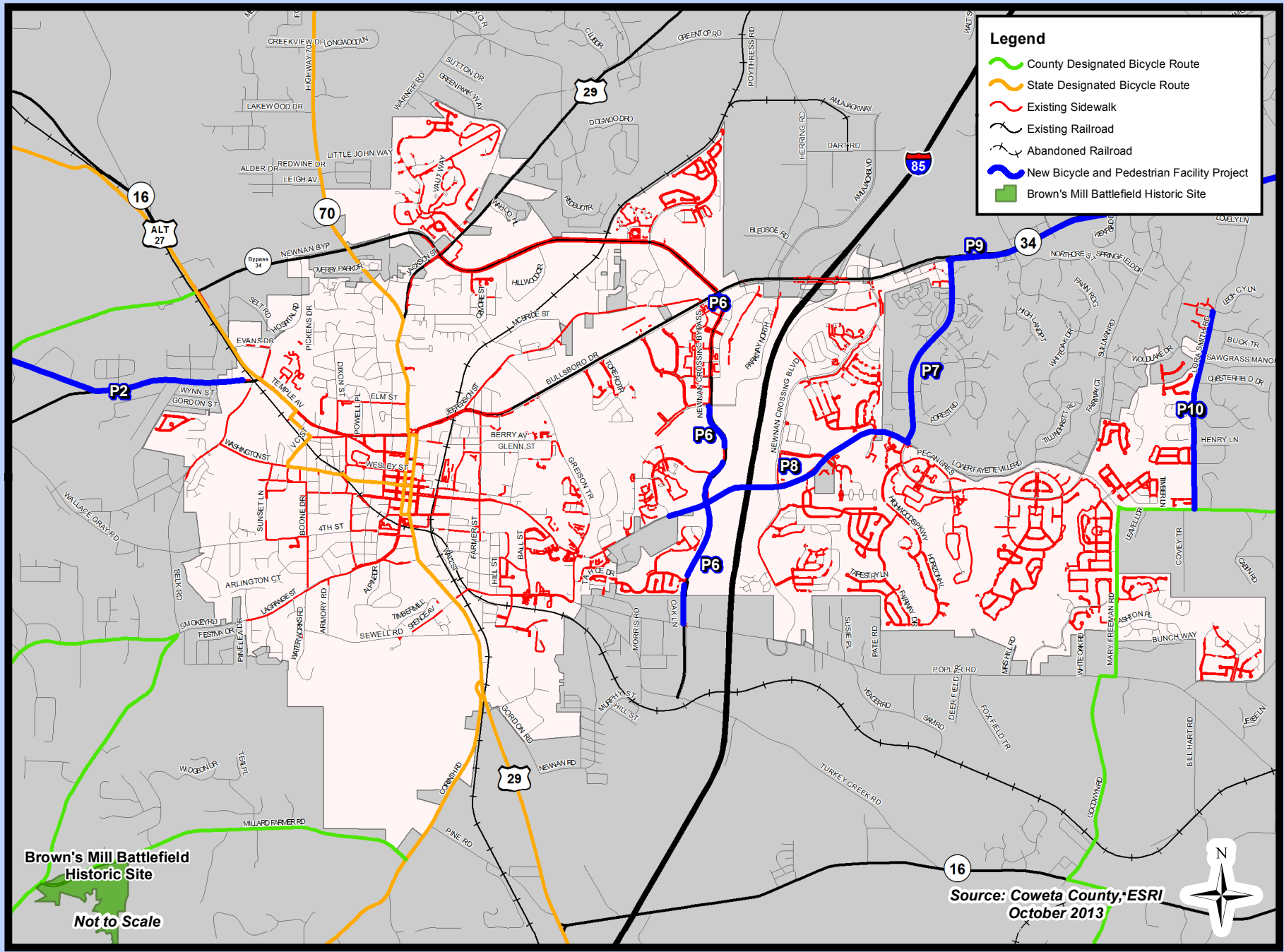
BICYCLE & PEDESTRIAN PROJECT LIST

P1	Bike route connection to Chattahoochee Bend State Park
P2	Extend existing bike route along Franklin Road to Newnan city limits
P3	Rehabilitate non-vehicular use bridge over railroad on Bridge Street at Senoia city limits (bicycle/pedestrian/golf cart use only)
P4	Sidewalks in Moreland between existing sidewalks on Railroad and Church Streets
P5	Chattahoochee Hill Country Regional Greenway Trail System Pilot Project (<i>exact project location yet to be finalized</i>)
P6	Sidewalks along SR 34 Bypass and Newnan Crossing Bypass to connect key destinations
P7	Sidewalks along Shenandoah Boulevard
P8	Sidewalks or bike paths along Lower Fayetteville Road
P9	Multi-use path along SR 34 from Newnan to Peachtree City
P10	Sidewalks along Lora Smith Road to connect two schools to subdivisions along roadway
P11	Sidewalk connection between existing sidewalks in downtown Sharpsburg and East Coweta High School
P12	Bike route on Gordon Road between Johnson Road and Elders Mill Road to connect two existing bike routes
P13	Sidewalk connection on Main Street in Senoia from Couch Street to Johnson Street to connect two existing sidewalks
P14	Sidewalks from Main Street in downtown Senoia to SR 16 (Broad Street)

It should also be noted that, although bicycle and pedestrian facility project recommendations from approved local jurisdiction plans are not listed individually in the CTP project recommendations, the CTP supports local jurisdictions’ continued development of such plans and implementation of the projects recommended therein as funding becomes available.



Coweta County Joint Comprehensive Transportation Plan Update Bicycle and Pedestrian Facility Projects (Coweta County)



Legend

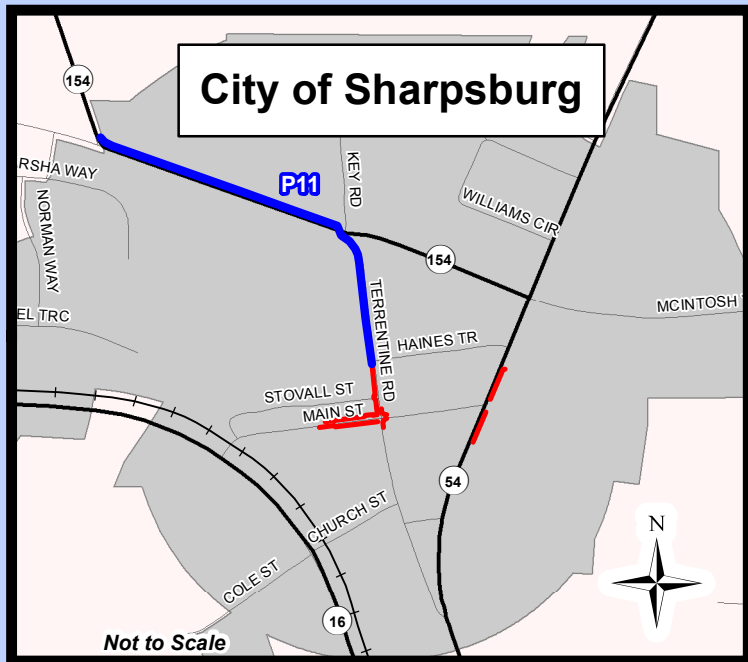
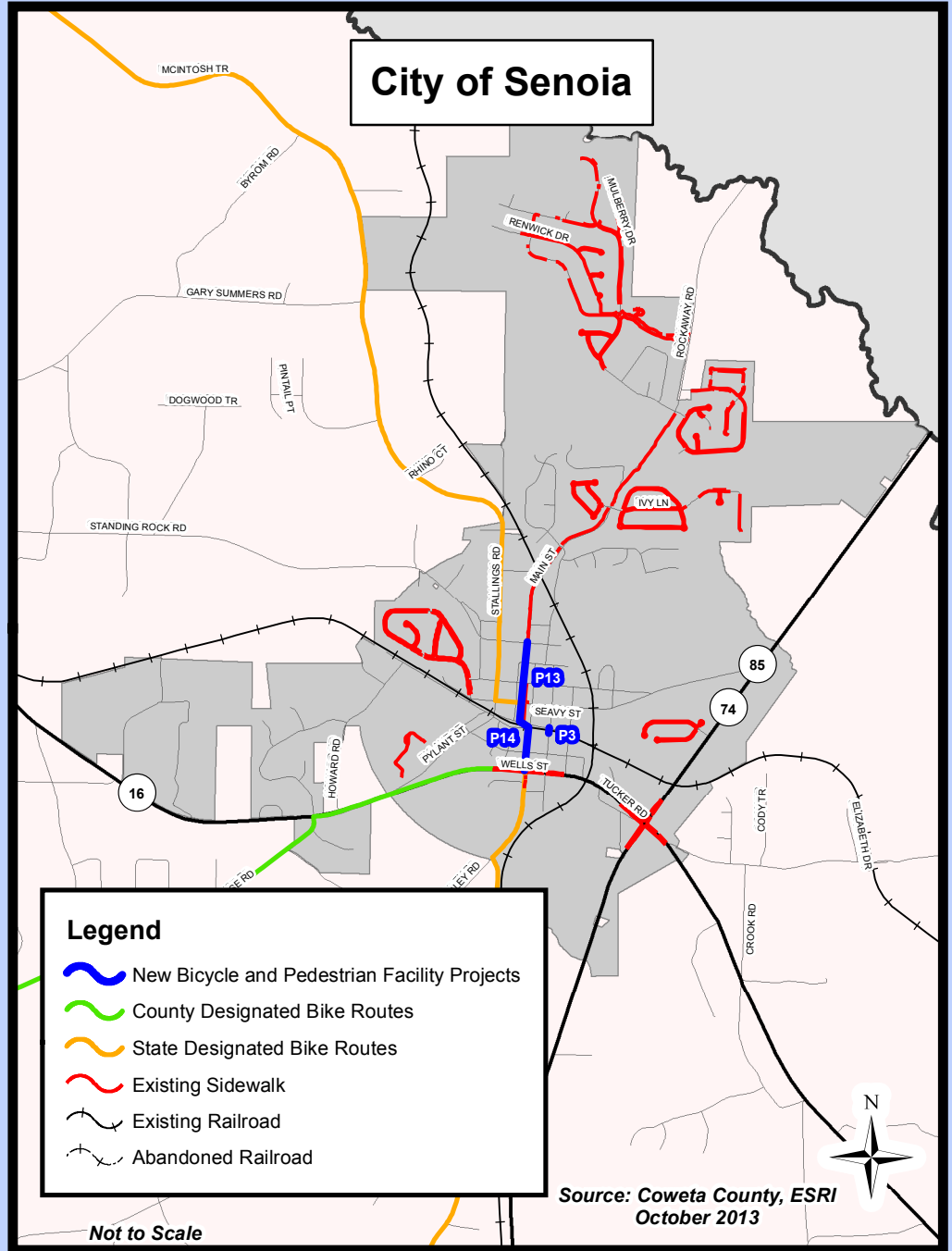
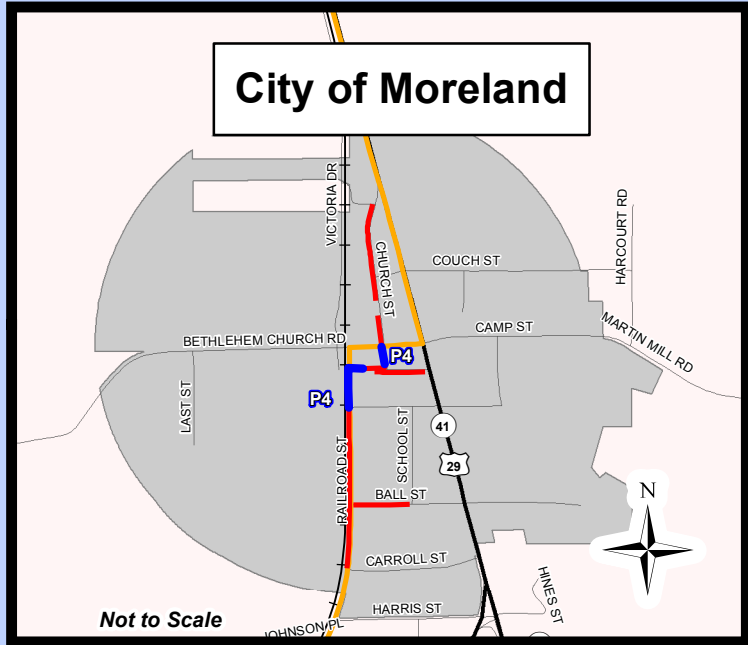
- County Designated Bicycle Route
- State Designated Bicycle Route
- Existing Sidewalk
- Existing Railroad
- Abandoned Railroad
- New Bicycle and Pedestrian Facility Project
- Brown's Mill Battlefield Historic Site

**Brown's Mill Battlefield
Historic Site**
Not to Scale

Source: Coweta County, ESRI
October 2013



Coweta County Joint Comprehensive Transportation Plan Update Bicycle and Pedestrian Facility Projects (City of Newnan)



**Coweta County Joint Comprehensive Transportation Plan Update
Bicycle and Pedestrian Facility Projects (Moreland, Senoia and Sharpsburg)**

COSTS & PHASING

Costs for all the roadway and bridge project recommendations total an estimated \$673.4 million, broken down by project type as follows:

- New Interchanges = \$70.8 million
- New Location Roadways = \$156.1 million
- Road Widening/Capacity = \$98.3 million
- Operational Upgrades = \$105.0 million
- Intersection Modifications = \$55.9 million
- Corridor Improvements = \$159.5 million
- Bridge Upgrades = \$26.4 million
- Railroad Crossings = \$1.4 million

Prioritization of projects took into consideration several primary factors, including: nature, degree and estimated timing of need, continuity with adjacent improvements, and anticipated funding levels and sources. Projects were prioritized into three implementation time periods:

- Short-term = 2014-2020
- Mid-term = 2021-2030
- Long-term = 2031-2040

Roadway and bridge projects programmed in the ARC 2012-2017 TIP and Coweta County 2013-2018 SPLOST compose the majority of short-term projects. They include 9 ARC TIP projects (\$104.3 million) and 13 remaining Coweta County SPLOST projects (\$7.3 million), with another 5 projects planned in the SPLOST should sufficient funding become available (\$12.7 million).

An additional 17 projects were prioritized into the “gap” years (2018-2020) remaining in the short-term period, assuming inclusion in the next ARC TIP or Coweta County SPLOST (if voter approved). These include several key mobility and economic development projects, such as those connected to the new Amlajack interchange, as well as a number of intersection improvements on locally maintained roads throughout Coweta. These 17 projects total an estimated \$90.8 million.

The 15 projects prioritized into the mid-term period consist mostly of new/widened roadways and corridor operational improvements on both the Federal/State and locally maintained roadway network. They have a total estimated cost of \$183.7 million.

The long-term projects predominantly include corridor operational improvements across the network, as well as intersection modifications on the Federal/State system. These 36 projects have a total estimated cost of \$94.9 million.

Several types of roadway improvements were not included within this prioritization due to the nature of the project and how they are traditionally funded. This includes the “corridor improvements,” bridges (non-programmed only), and railroad crossing upgrades.

As mentioned previously, the 7 projects identified as corridor improvements will require further detailed analysis by the Georgia DOT and/or the ARC to determine the exact nature of the improvement, which could include a combination of widening, operational upgrades, intersection modifications and new location roadways. These projects are all located along SR 16 as it crosses Coweta from Carroll to Spalding counties and including the proposed Southwest Bypass to the west and south of Newnan.

With the exception of any bridge and railroad crossings currently programmed in the ARC TIP or Coweta County SPLOST, it was assumed that all future improvements would be funded under State or regional programs dedicated to bridge upgrades and railroad crossing safety. Georgia DOT maintains a strict monitoring system of all bridges and railroad crossings statewide, and programs improvements as necessary based on need and available funding.

FUNDING

Project funding is categorized into federal, state, and local sources. Locally, SPLOSTs and impact fees are common ways to fund transportation improvements beyond what is available through general funds. Local sources may also include quasi-governmental agencies (school boards/development authorities) and the private sector (business/community improvement organizations and developers/property owners). Federal, state and regionally maintained programs fund specific types of improvements, ranging from bridges and transit to those focused on air quality and safety.

The only CTP projects with committed funding are those in the short-term ARC 2012-2017 TIP and Coweta County 2013-2018 SPLOST. Funding availability through 2040 remains uncertain at all levels. Because of this uncertainty, assumptions were made based on current funding levels to derive the fiscally constrained plan of projects.

Total estimated funding by prioritization period is:

- Short-term (2013-2020) = \$160.7 million
 - ARC 2012-2017 TIP = \$104.3 million
 - Coweta 2013-2018 SPLOST = \$7.3 million
 - “Gap” ARC (2018-2020) = \$26.8 million
 - “Gap” SPLOST (2019-2020) = \$22.3 million
- Mid-term (2021-2030) = \$131.6 million
 - ARC RTP = \$34.4 million
 - Coweta SPLOST = \$97.2 million
- Long-term (2031-2040) = \$123.6 million
 - ARC RTP = \$34.4 million
 - Coweta SPLOST = \$89.2 million

These amounts assume current sources and levels continue mostly unchanged through 2040. As such, SPLOST funding of \$11.15 million per year was assumed for all but four years through 2040. Although Coweta voters have been supportive of the SPLOST in recent years, those four years allow for occasional breaks between SPLOST periods.

Similarly, the ARC funding amount in the short-term “gap” years equals the 2012-2017 TIP value for federal and state sources only, annualized, for three years. In the mid-term period, ARC funding equals the amount already allocated to the one project currently in the RTP. The long-term period funding assumes the same value as currently allocated in the RTP in those years.

Several additional notes should be made regarding funding assumptions. First, future estimated SPLOST amounts do not account for funding set-asides that some ongoing roadway rehabilitation, striping and maintenance programs currently receive. Additionally, several other types of CTP project recommendations, such as bicycle/pedestrian and transit, are not included in this costing, phasing or funding analysis. Finally, federal/state funding typically requires a local match of no less than 20 percent, which Coweta has funded in recent years with SPLOST revenues.

Achieving funding at estimated levels will require significant efforts on the part of Coweta County staff and officials. Local funding, primarily through the SPLOST, necessitates a continued commitment to ensuring that public funds are spent as efficiently and effectively as possible, and that the citizens are aware and supportive of those efforts and projects. Additionally, lean economic times mean that state and regional funding is limited and highly competitive. Coweta County officials and staff must continue to be proactive in efforts to inform regional and state planning partners of the County’s transportation needs and priorities, as well as in stridently promoting the County’s interests in the competition for any available funding.

Municipality Snapshots



CITY OF GRANTVILLE

Located on Coweta's southern border adjacent to Troup and Meriwether counties, the City of Grantville has a population of over 3,000 and area of 5.2 square miles. Grantville area projects are:

- Operational improvements on US 29 between LaGrange Street and Griffin Street
- Intersection modifications on US 29 at Lowery Road and Griffin Street at Charlie Patterson Road
- 7 bridge upgrades over the Messiers and Yellow Jacket creeks
- Railroad crossing upgrade on Main Street
- Sidewalks connecting key destinations

CITY OF HARALSON

The small community of Haralson, on the southeast border with Meriwether and Spalding counties, has a population of 166 and area of 0.7 square miles. CTP projects in/near Haralson are:

- Intersection modifications to SR 74/85 at Gordon Road and Line Creek Road at Shaddix Road and Main Street
- Additional sidewalk to connect downtown destinations and residential areas



TOWN OF MORELAND

South of Newnan in central Coweta County, the Town of Moreland has a population of almost 400 and area of 0.9 square miles. CTP projects located in and around Moreland include:

- Operational improvements on US 29 between SR 41 and Church Street, and on Railroad Street from Main Street to Harris Street
- Intersection modification at SR 14 and SR 41
- New two-lane roadway connecting from US 29 north of Moreland near the airport to Bethlehem Church Road to the west of town
- Sidewalk to connect the gaps in existing facilities along Railroad and Church streets and link other downtown destinations



CITY OF NEWNAN

The City of Newnan is Coweta's county seat and largest city in both population and size, with more than 33,000 residents and a land area of over 18 square miles. Not surprisingly, a number of CTP projects are located in Newnan and adjacent unincorporated areas of the county. Several key CTP projects around Newnan include:

- New I-85 interchanges at Poplar Road and Amlajack Boulevard
- Additional capacity on Lower Fayetteville Road and Newnan Crossing Boulevard East
- New roadway extensions to McIntosh Parkway and Andrews Street
- Various intersection modifications, including realignment of the Five Points intersection
- Sidewalks and multi-use paths connecting key destinations



CITY OF SENOIA

Located in southeastern Coweta adjacent to Fayette County, Senoia has a population of 3,300 and area of 4.7 square miles. The CTP includes a wide variety of projects in and around Senoia:

- New two-lane roadway connecting the end of Ivy Lane to SR 74/85
- Operational improvements along Stallings Road from Couch Street to McIntosh Trail
- Intersection modifications on SR 16 at Pylant Street, Rockaway Road at Heritage Point Parkway, and SR 74/85 at Seavy Street
- Upgrade the bridge over the rail line on SR 74/85 between SR 16 and Seavy Street
- Rehabilitate the bridge over the railroad on Bridge Street for non-vehicular use
- Railroad crossing improvements along Seavy Street and Johnson Street
- Sidewalks along Main Street and in downtown to SR 16 and other key destinations

TOWN OF SHARPSBURG

The Town of Sharpsburg is located in eastern-central Coweta County, along SR 16 between Newnan and Senoia. It has a population of approximately 341 residents and a land area of 0.6 square miles. A number of improvements are recommended in the vicinity of Sharpsburg:

- Intersection modifications on SR 154 at Old Hwy 16 and at Terrentine Street
- Operational improvements along SR 54, SR 154, and McIntosh Trail to the north and east
- Sidewalks to connect downtown with East Coweta High School and other residential destinations

TOWN OF TURIN

Immediately southeast of Sharpsburg along SR 16, the Town of Turin has 274 residents within its 1.3 square miles. The CTP recommends around Turin:

- Intersection improvements on SR 16 at SR 54
- Further detailed analysis along the SR 16 corridor to determine the best combination of specific improvements
- Sidewalk connections to destinations in downtown and residential areas



CTP Documentation

The Coweta County Joint CTP Update was a 15-month study, over the course of which a number of interim and final deliverables were produced. These supplemental study products, listed below, provide more detailed descriptions of study activities, technical analyses and findings. Copies can be requested from the Coweta County Transportation & Engineering Department.

- Project Management Plan
- Public Involvement Plan
- Inventory of Existing Conditions
- Needs Assessment Report
- Recommendations Report
- Final Joint Comprehensive Transportation Plan Technical Report
- Transit Needs and Feasibility Study



City of Haralson Comprehensive Plan Update

PUBLIC VISIONING MEETING

Haralson City Hall

Tuesday, May 3, 2016 @ 6:00 PM

Sign-In Sheet

NAME	EMAIL ADDRESS	PHONE
Paul Jarrell	pjarrell@hotmail.com	770-254-6450
Belinda Wilson	Belinda.Wilson@charter.net	770-599-3112
Jerrin Simpson	nang3111@live.com	678-633-9486
Scott Beaumont	chaffield.scott@gmail.com	404-427-0729
Audrey H		
CHRIS HOLT	BOJACK HOLT@YAHOO.COM	404-780-8553
Lori Holt	holt1534@gmail.com	404 293-6022
Gloria Caldwell	gloriacaldwell43@yahoo.com	770-599-0198
James Abraham	abraham@thebusiness.com	678-490-0510
Tommy Scott	TommyScott52@yahoo.com	478-388-8835
Tom Robinson	TARobinson7@Live.com	678 967-7065
Dwayne Godfrey	Smekyg@gmail.com	770-318-4124
Clint Barbour	fcbr760@yahoo.com	678-416-2964
JAMES PARNISH	jamesparish143@yhm.com	(770) 599-8488
Donna Bigger-Setton	donna1biggers@yahoo.com	678 329-4065

City of Haralson

ADOPTION RESOLUTION

WHEREAS, the City of Haralson has completed its 2016-2036 Comprehensive Plan update; and

WHEREAS, the updated Comprehensive Plan was prepared in accordance with the Minimum Standards and Procedures for Local Comprehensive Planning established by the Georgia Planning Act of 1989; and

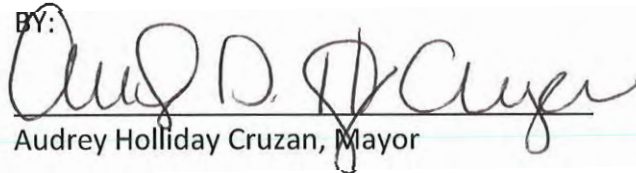
WHEREAS, the two required public hearings were conducted at Haralson City Hall on November 9th, 2015 and September 19th, 2016; and

WHEREAS, the Comprehensive Plan was transmitted to the Three Rivers Regional Commission and the Department of Community Affairs for review; and

WHEREAS, the Department of Community Affairs has reviewed the Comprehensive Plan and finds that it adequately addresses Minimum Standards for Local Comprehensive Planning; and

NOW, THEREFORE, LET IT BE RESOLVED, the City of Haralson Council hereby adopts this 2016-2036 Comprehensive Plan, on this 10th day of October, 2016.

BY:


Audrey Holliday Cruzan, Mayor

ATTEST:


Paulette Brown



City of Haralson
171 Magnolia Street
Post Office Box 155
Haralson, Georgia 30229

September, 19th 2016

Mr. Lanier Boatwright
Three Rivers Regional Commission
P.O. Box 818
Griffin, GA 30224

RE: City of Haralson Comprehensive Plan 2016-2036

Mr. Boatwright,

The City of Haralson has completed an update of its comprehensive plan and is submitting it with this letter for review by the Three Rivers Regional Commission and the Department of Community Affairs.

I certify that we have held the required public hearings and have involved the public and community stakeholders in development of the plan. Public hearings were held on November 9th 2015 and September 12th 2016.

I certify that we have reviewed both the Regional Water Plan covering our area and the Rules for Environmental Planning Criteria (O.C.G.A. 12-2-8) and taken them into consideration in formulating our plan.

If you have any questions concerning our submittal, please contact Paulette Brown, City Clerk, at 770-599-3985.

Sincerely,



Audrey Holliday Cruzan, Mayor
City of Haralson

Enclosures