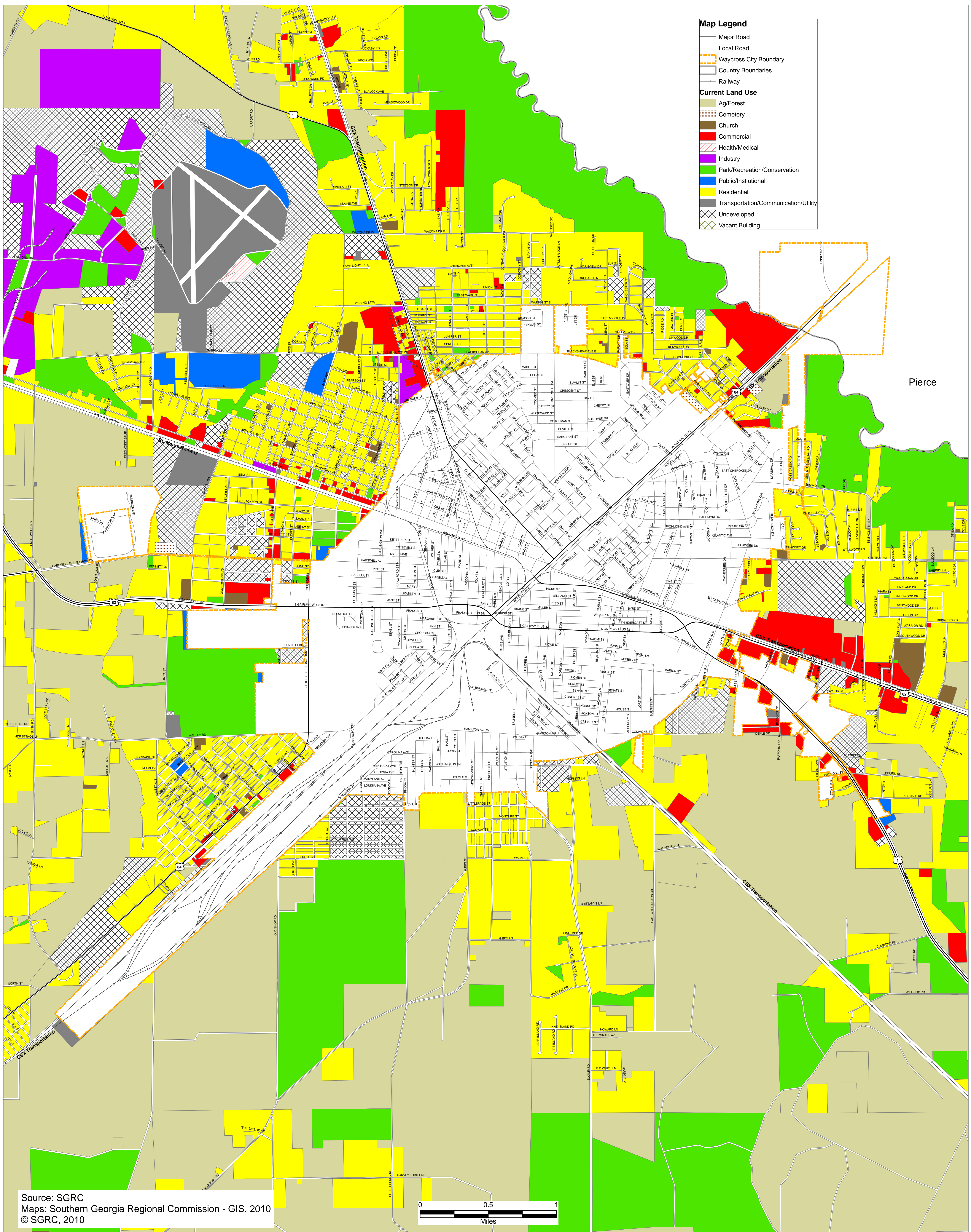


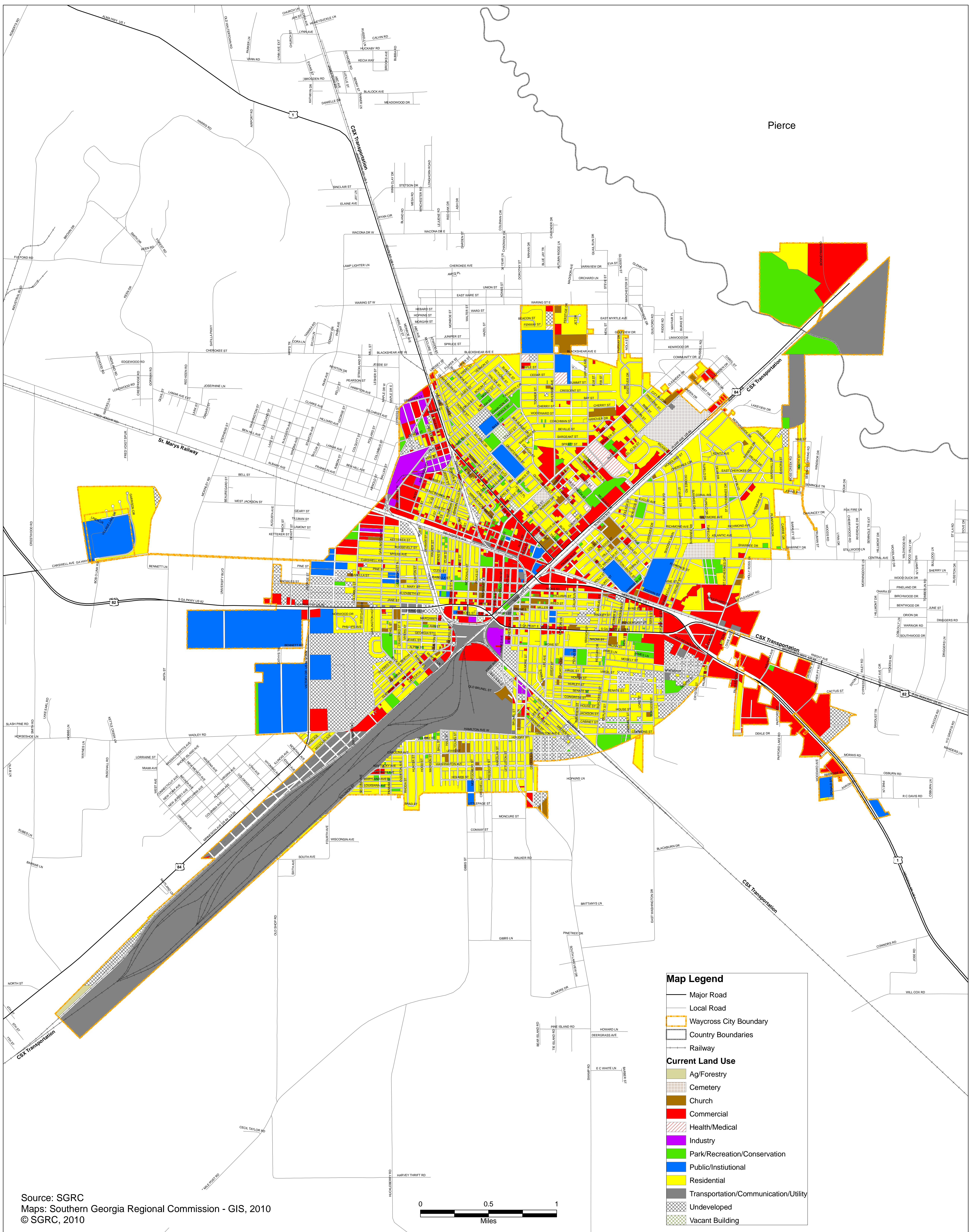
**MAP 5-1 CURRENT LAND USE
 WARE COUNTY
 GREATER WARE COUNTY
 COMPREHENSIVE PLAN**





**MAP 5-2 CURRENT LAND USE
 WARE COUNTY
 GREATER WARE COUNTY
 COMPREHENSIVE PLAN**



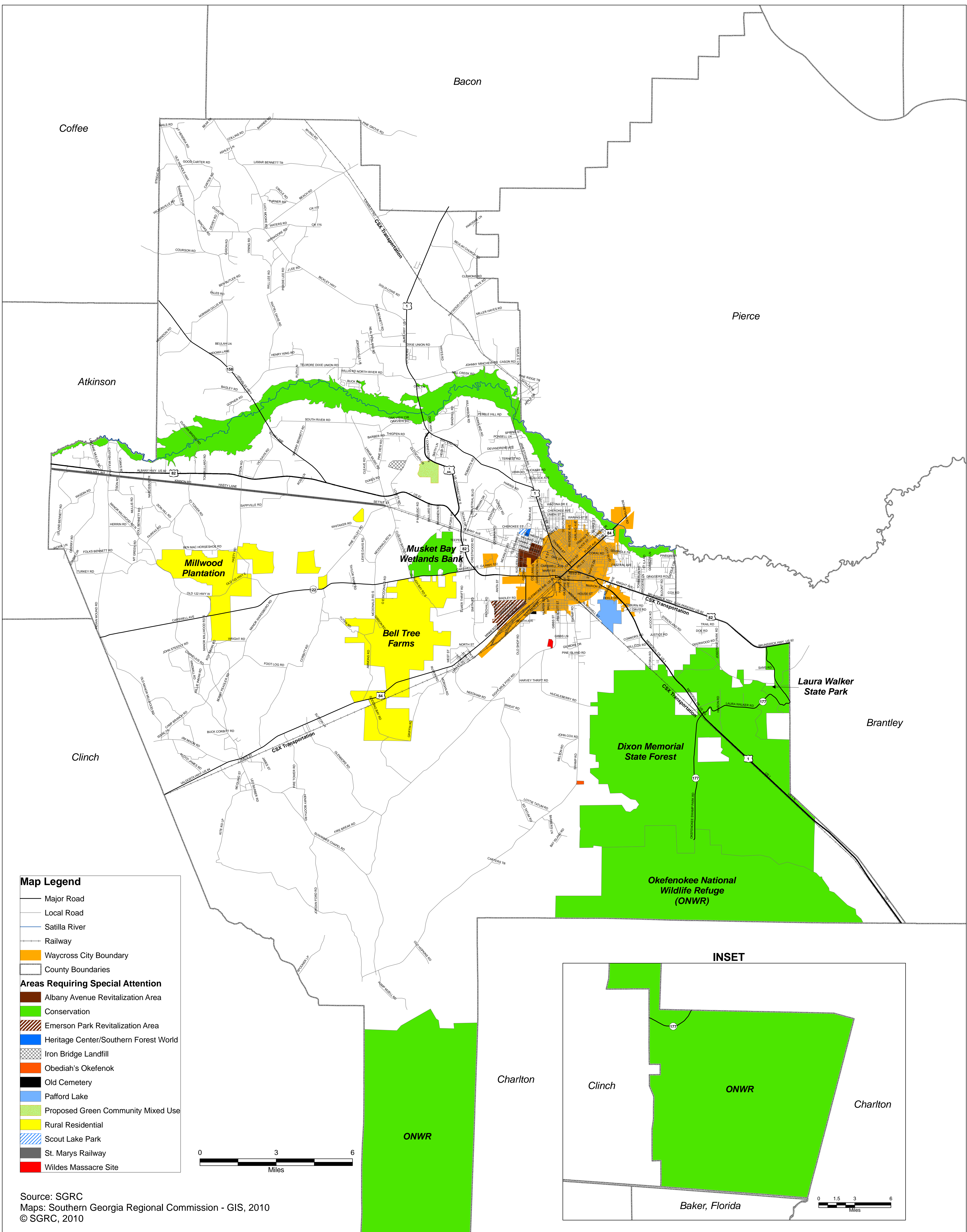


Source: SGRC
 Maps: Southern Georgia Regional Commission - GIS, 2010
 © SGRC, 2010

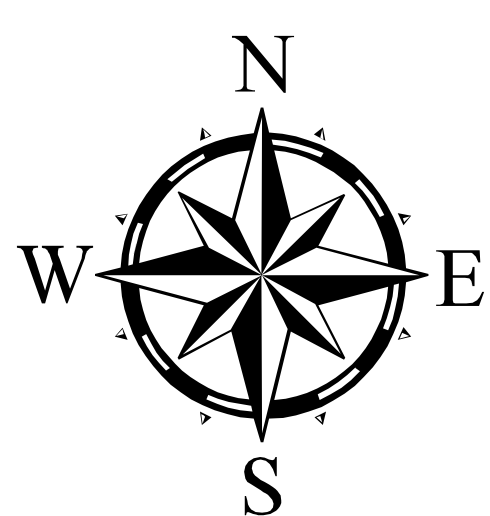


MAP 5-3 CITY OF WAYCROSS CURRENT LAND USE GREATER WARE COUNTY COMPREHENSIVE PLAN



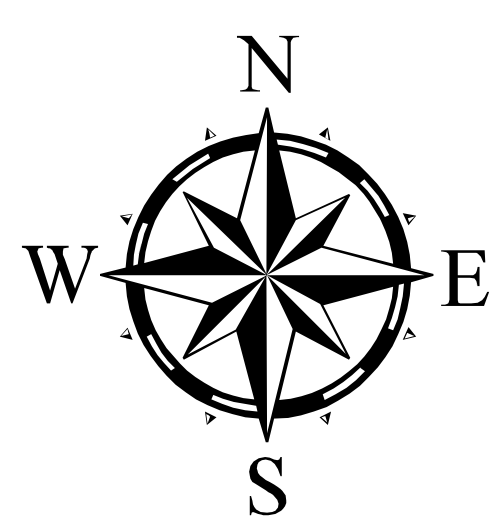
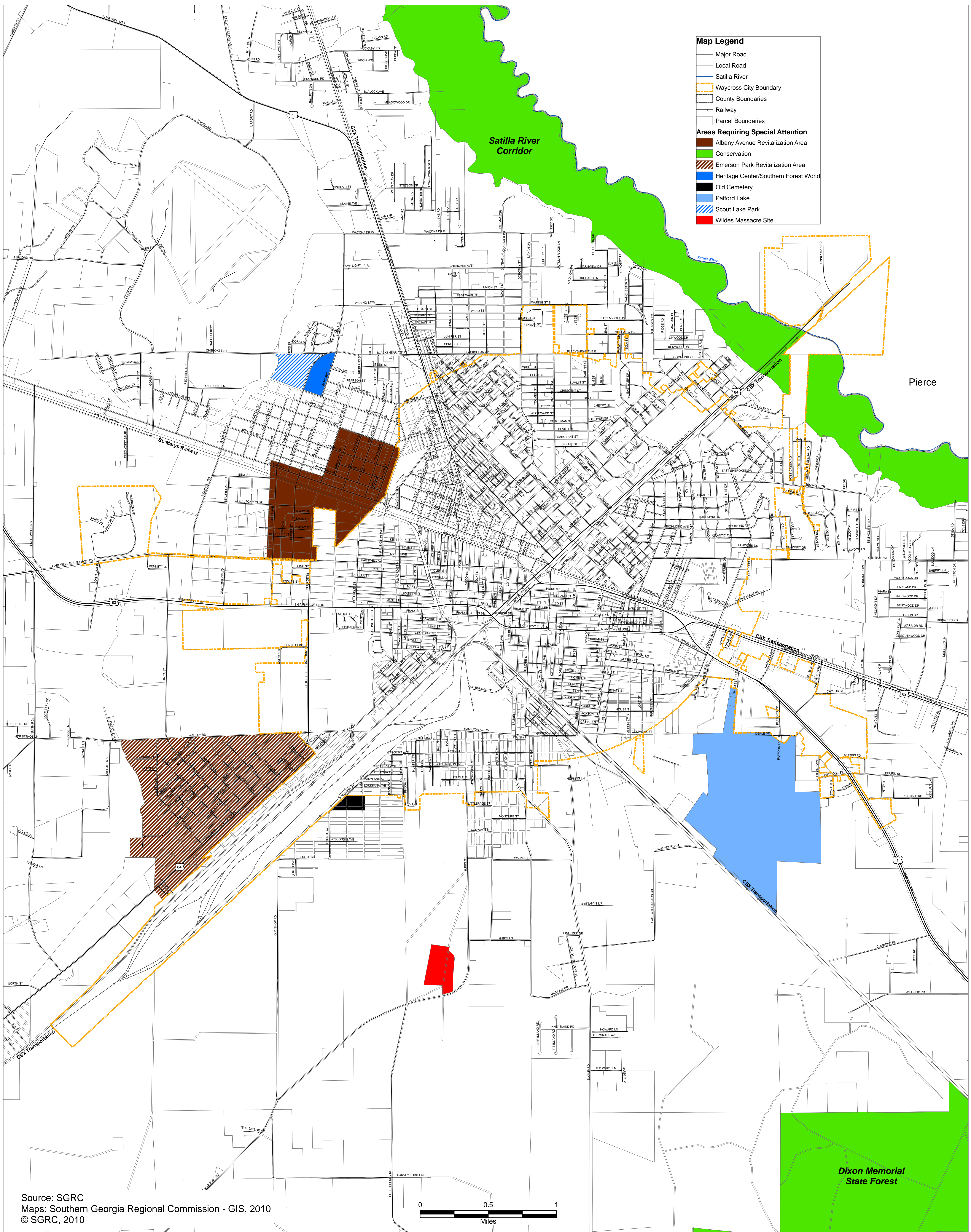


Source: SGRC
 Maps: Southern Georgia Regional Commission - GIS, 2010
 © SGRC, 2010



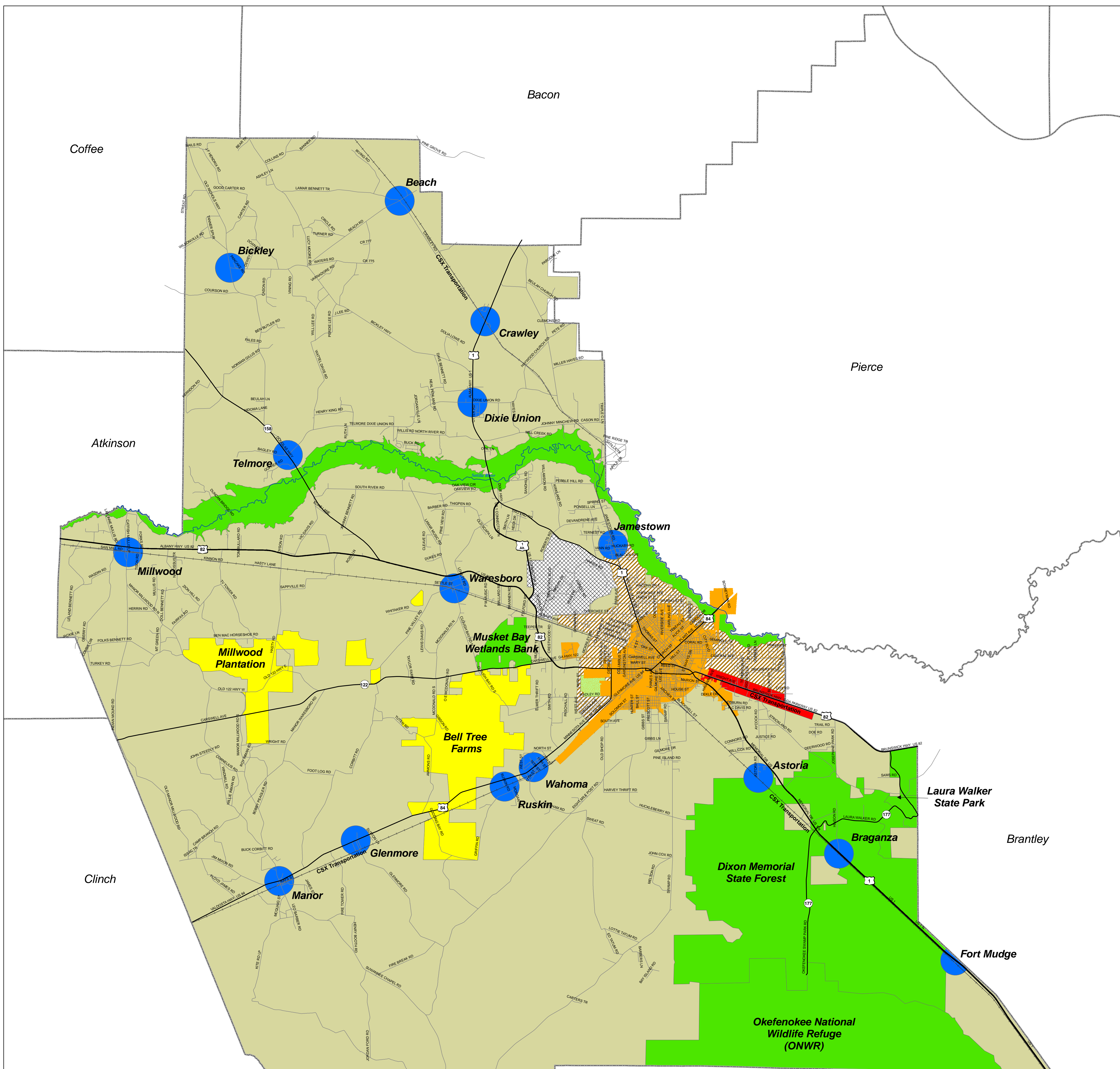
MAP 5-4 WARE COUNTY AREAS REQUIRING SPECIAL ATTENTION GREATER WARE COUNTY COMPREHENSIVE PLAN



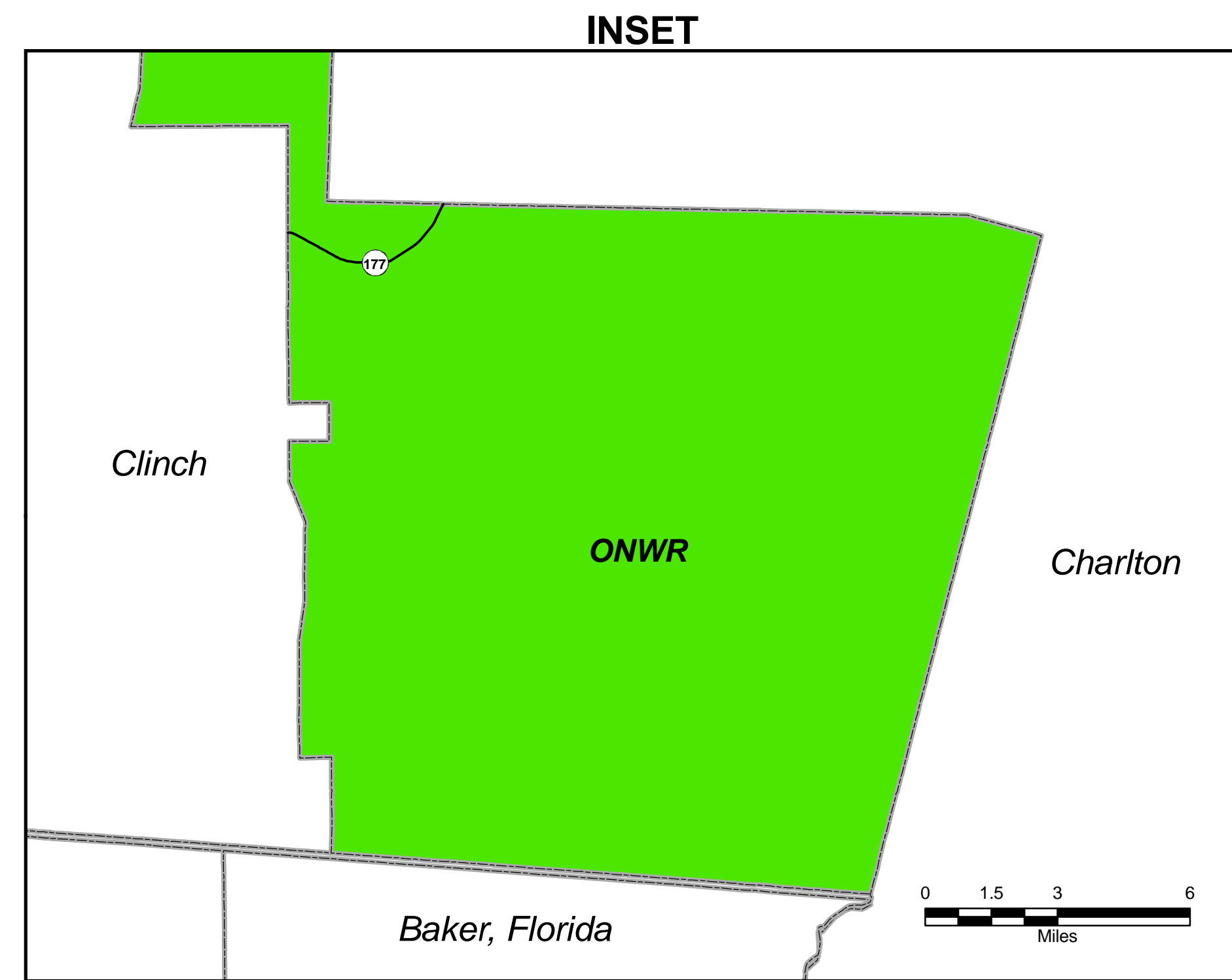
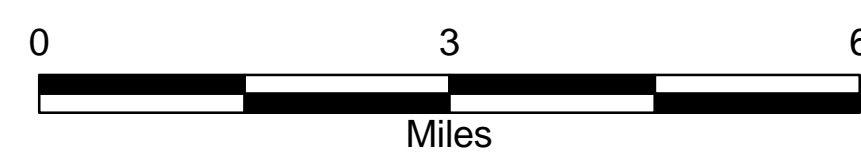


**MAP 5-5 WARE COUNTY
 AREAS REQUIRING SPECIAL ATTENTION
 GREATER WARE COUNTY
 COMPREHENSIVE PLAN**

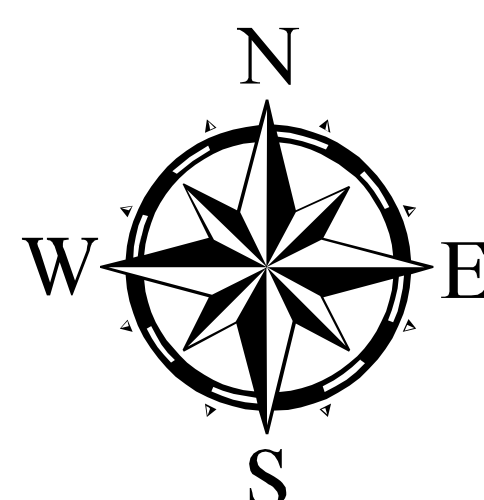




- Map Legend**
- Major Road
 - Local Road
 - Satilla River
 - ▭ Waycross City Boundary
 - ▭ County Boundaries
 - Railway
- Character Areas**
- ▭ Agriculture/Silviculture
 - ▭ Conservation
 - ▭ Crossroads Commercial Corridor
 - ▭ Rural Residential
 - ▭ Rural Village
 - ▭ Trembling Earth Recreation Complex
 - ▭ Urban Fringe
 - ▭ Ware County/Waycross Industrial Park

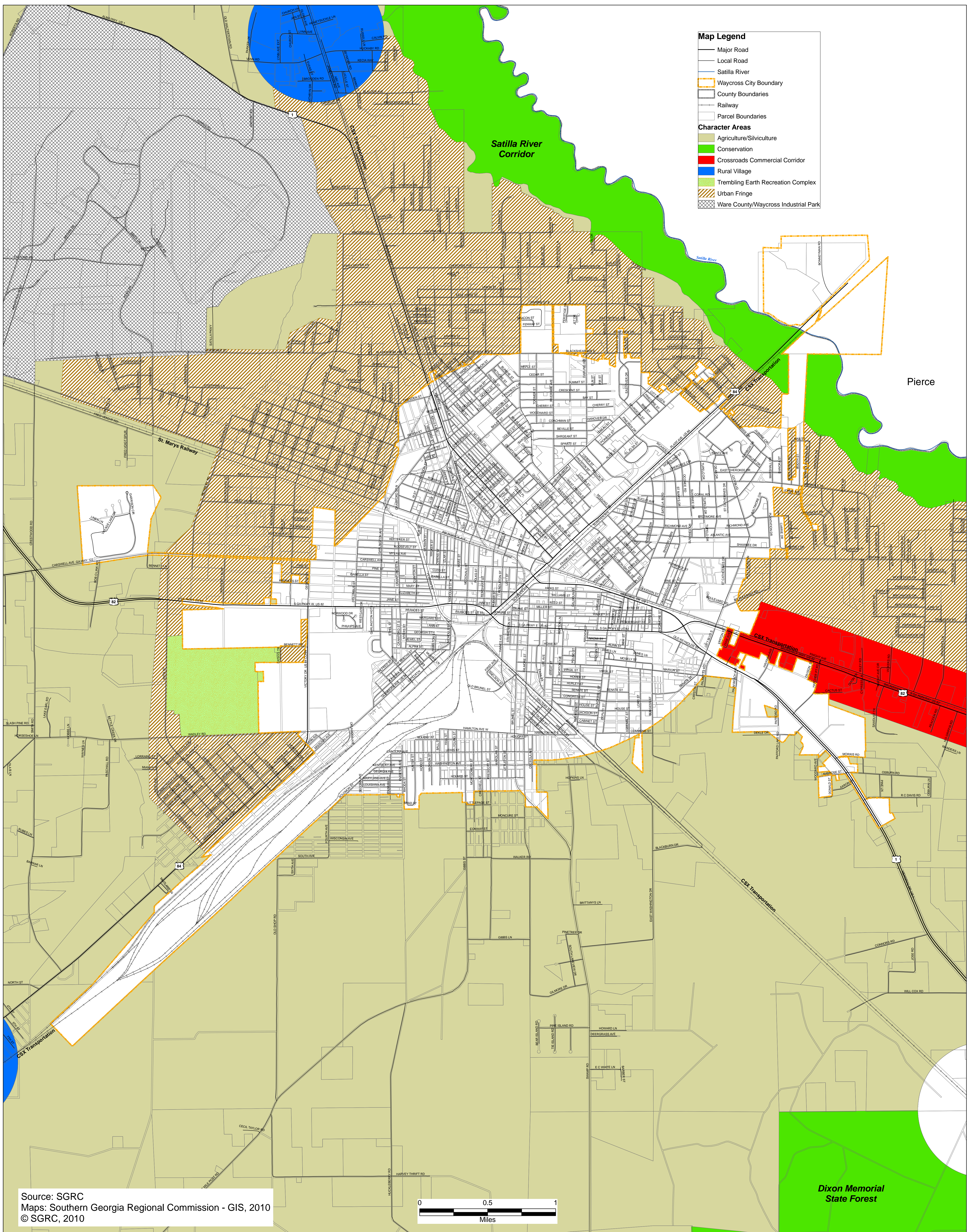


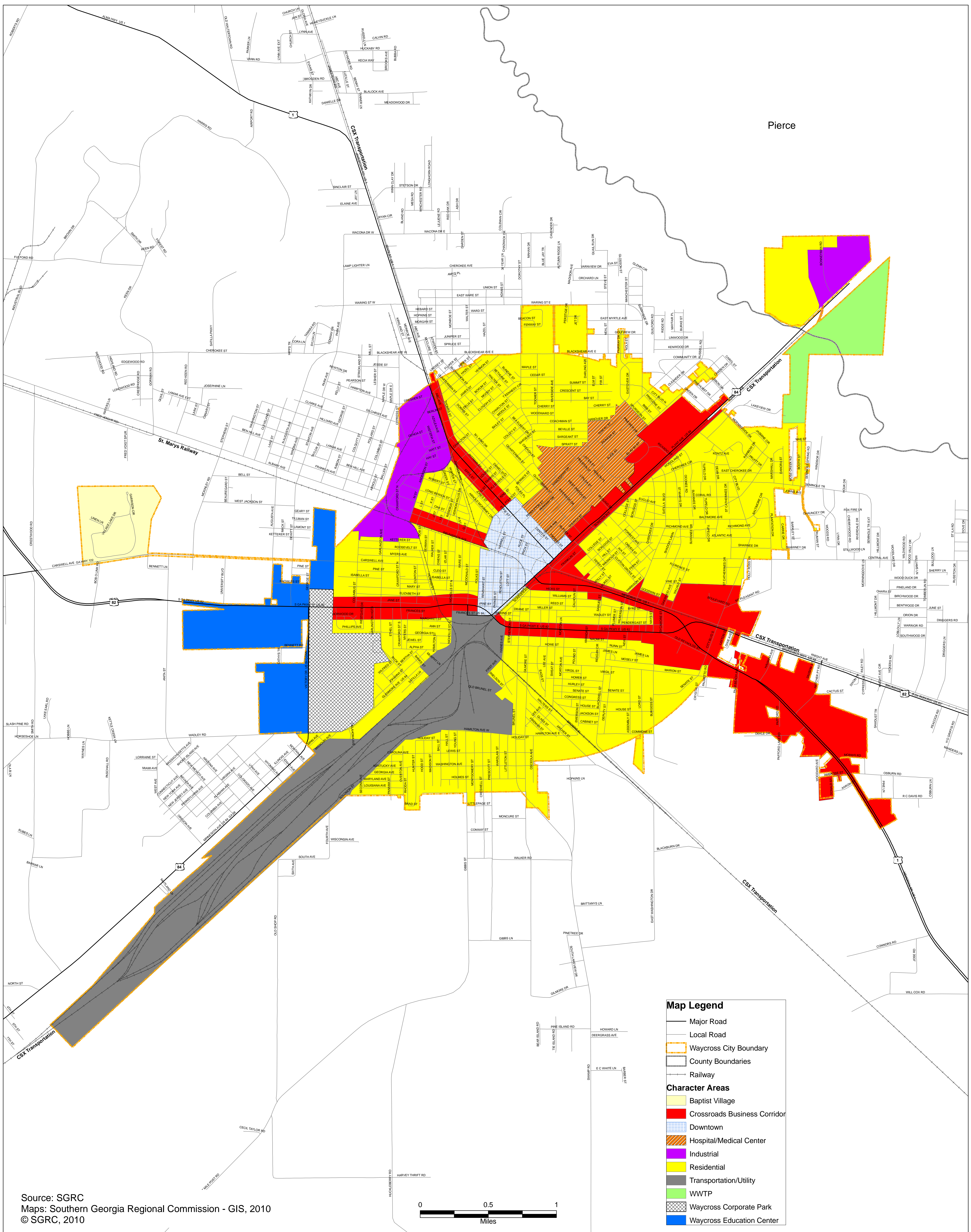
Source: SGRC
 Maps: Southern Georgia Regional Commission - GIS, 2010
 © SGRC, 2010



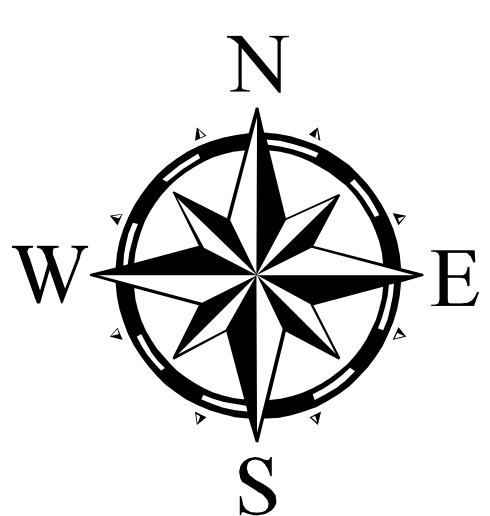
**MAP 5-7 WARE COUNTY
 PRELIMINARY CHARACTER AREAS
 GREATER WARE COUNTY
 COMPREHENSIVE PLAN**







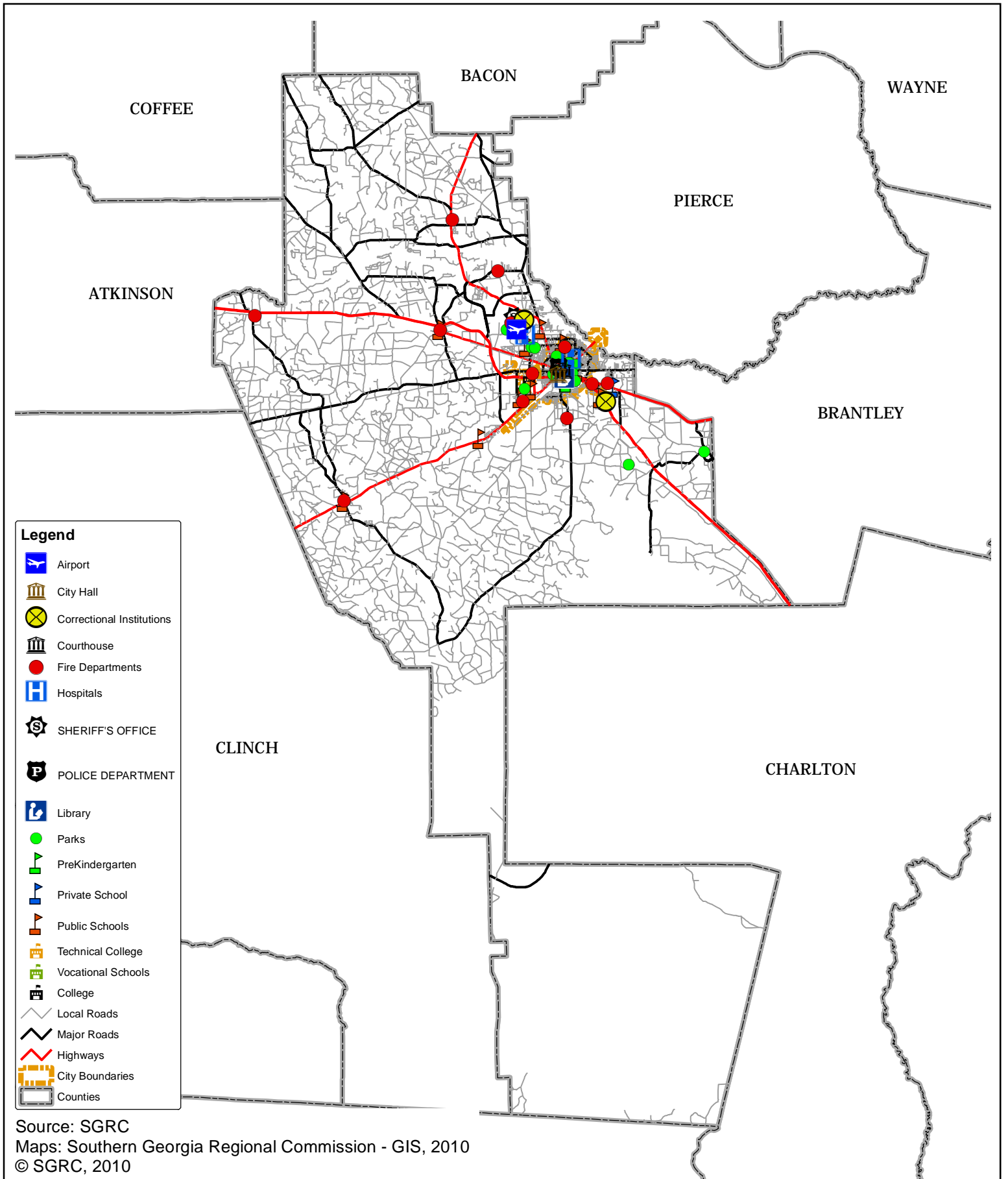
Source: SGRC
 Maps: Southern Georgia Regional Commission - GIS, 2010
 © SGRC, 2010




















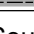



MAP 5-9 CITY OF WAYCROSS PRELIMINARY CHARACTER AREAS GREATER WARE COUNTY COMPREHENSIVE PLAN



- Map Legend**
- Major Road
 - Local Road
 - ▭ Waycross City Boundary
 - ▭ County Boundaries
 - ▭ Railway
- Character Areas**
- ▭ Baptist Village
 - ▭ Crossroads Business Corridor
 - ▭ Downtown
 - ▭ Hospital/Medical Center
 - ▭ Industrial
 - ▭ Residential
 - ▭ Transportation/Utility
 - ▭ WWTP
 - ▭ Waycross Corporate Park
 - ▭ Waycross Education Center



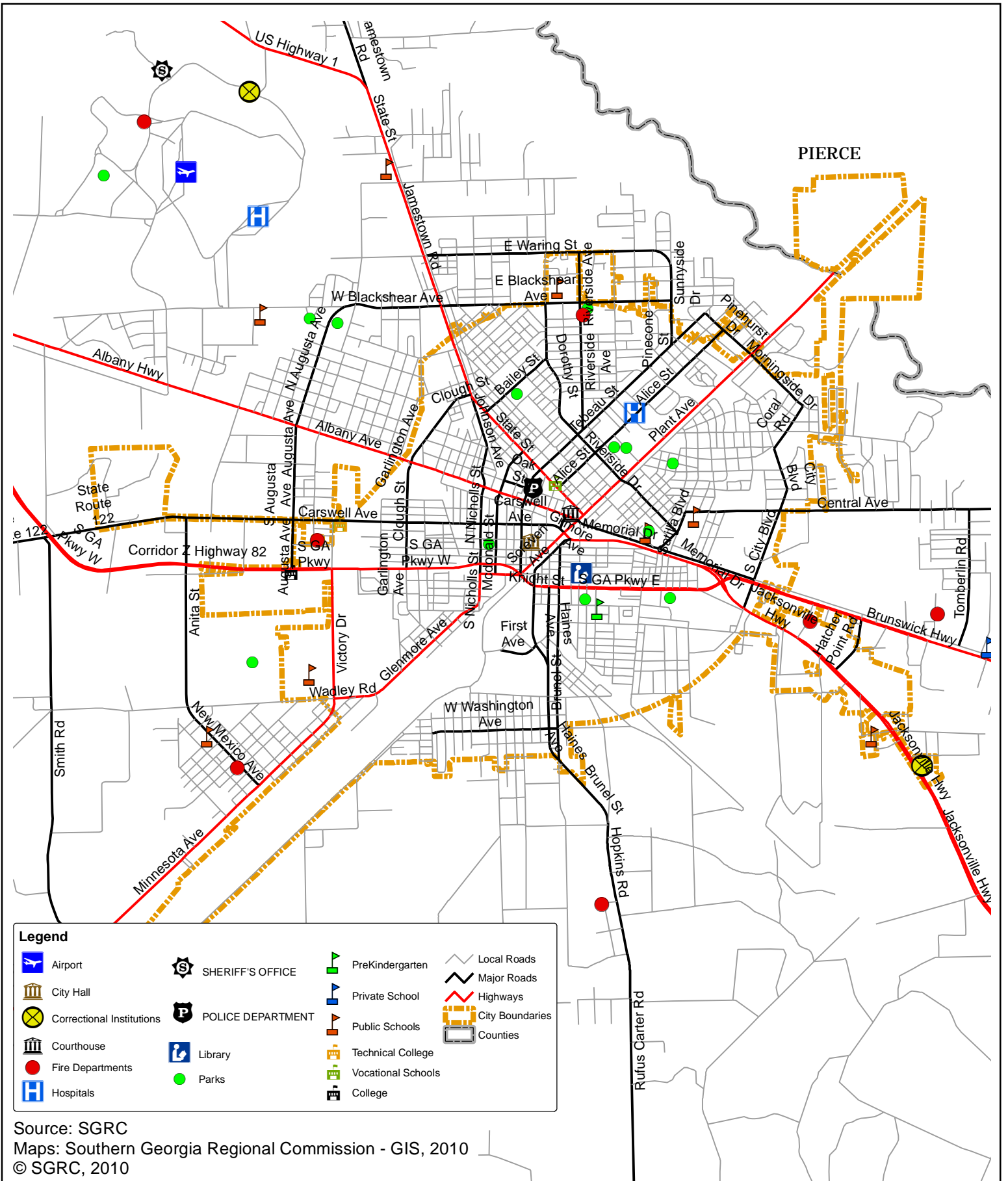
- Legend**
-  Airport
 -  City Hall
 -  Correctional Institutions
 -  Courthouse
 -  Fire Departments
 -  Hospitals
 -  SHERIFF'S OFFICE
 -  POLICE DEPARTMENT
 -  Library
 -  Parks
 -  PreKindergarten
 -  Private School
 -  Public Schools
 -  Technical College
 -  Vocational Schools
 -  College
 -  Local Roads
 -  Major Roads
 -  Highways
 -  City Boundaries
 -  Counties

Source: SGRC
 Maps: Southern Georgia Regional Commission - GIS, 2010
 © SGRC, 2010



Map 5-10 Community Facilities
 Ware County
 Greater Ware County
 Comprehensive Plan





Legend

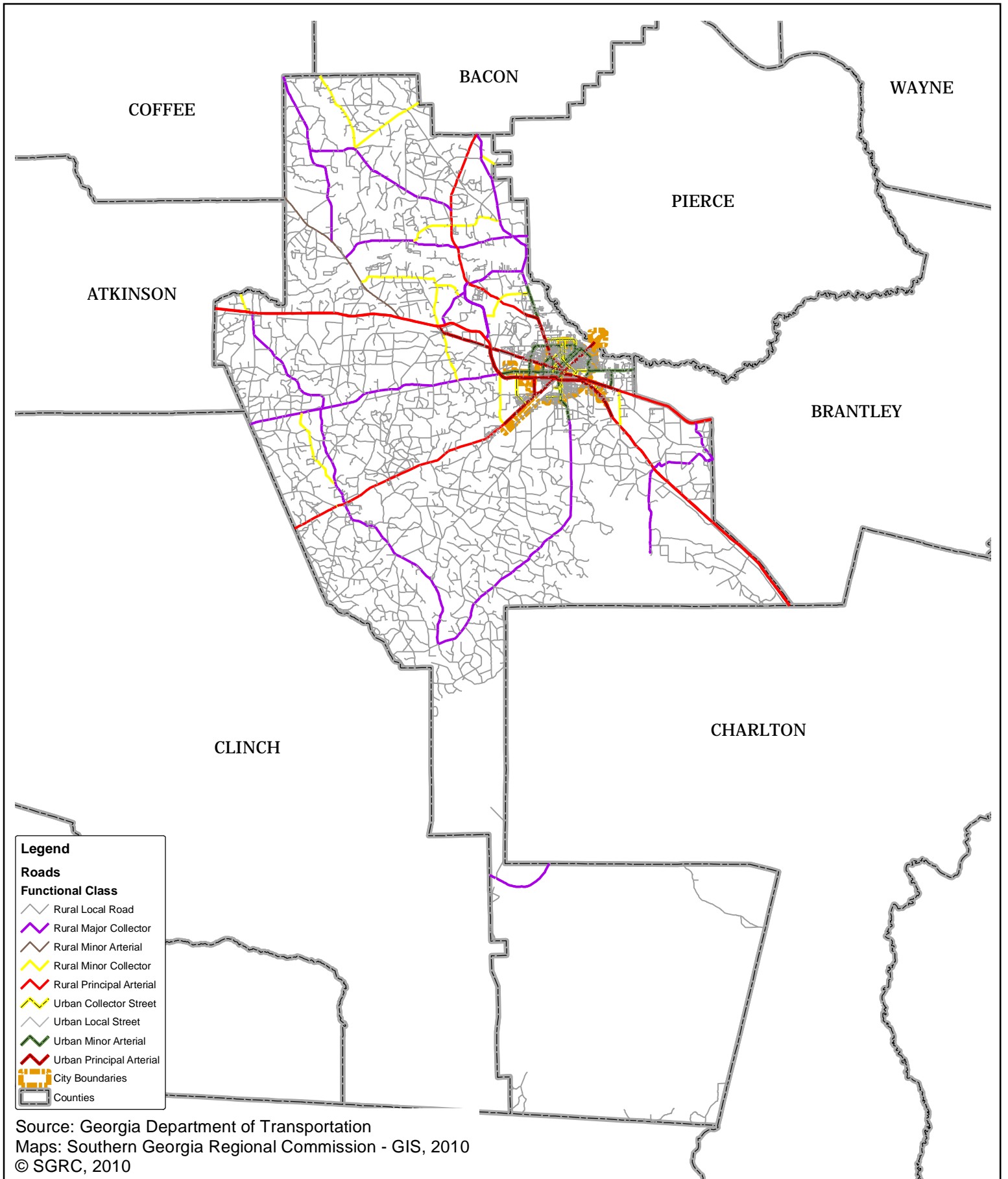
Airport	SHERIFF'S OFFICE	PreKindergarten	Local Roads
City Hall	POLICE DEPARTMENT	Private School	Major Roads
Correctional Institutions	POLICE DEPARTMENT	Public Schools	Highways
Courthouse	Library	Technical College	City Boundaries
Fire Departments	Parks	Vocational Schools	Counties
Hospitals		College	

Source: SGRC
 Maps: Southern Georgia Regional Commission - GIS, 2010
 © SGRC, 2010



Map 5-11 Community Facilities
 City of Waycross
 Greater Ware County
 Comprehensive Plan











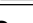




Legend

Roads

Functional Class

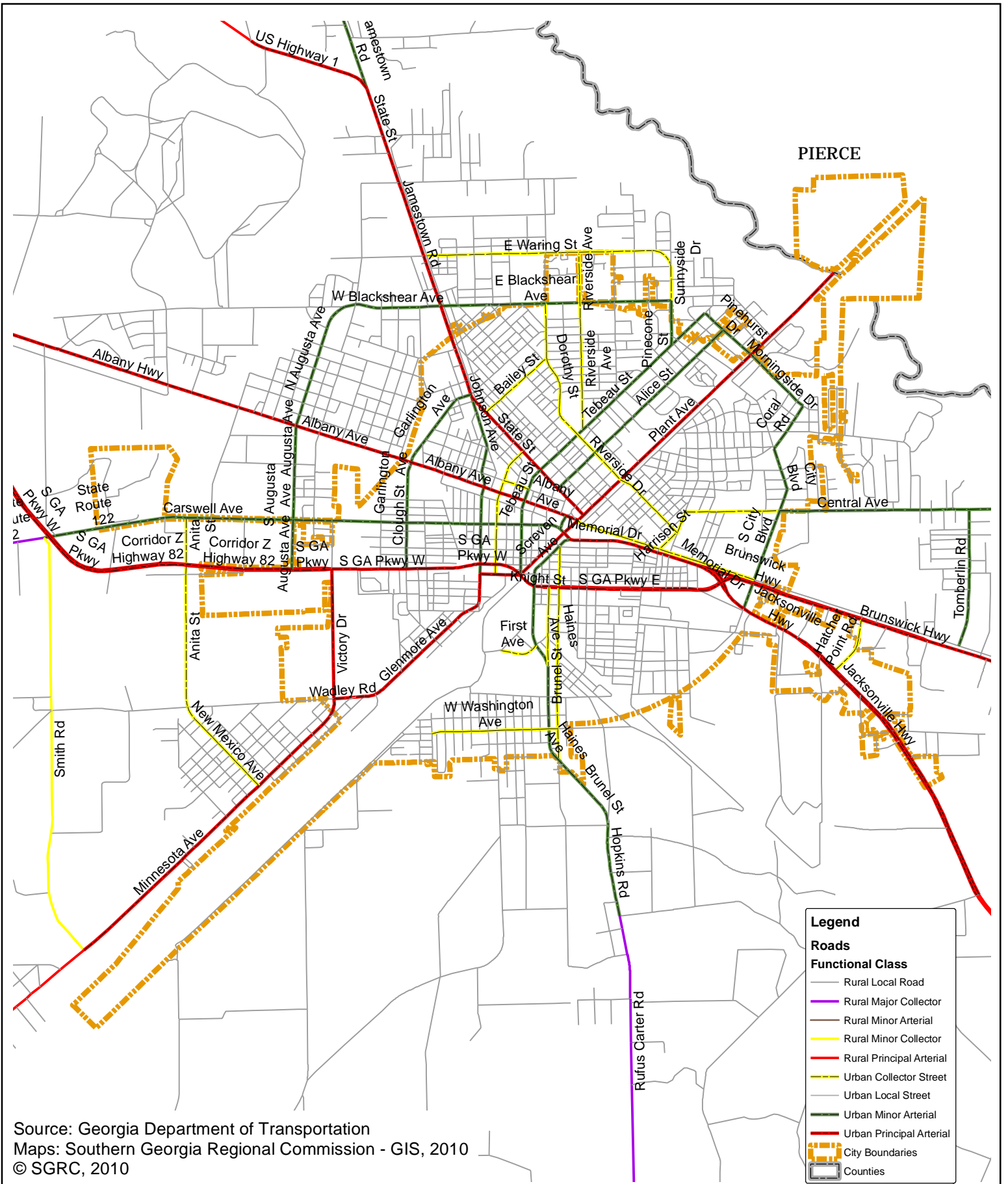
-  Rural Local Road
-  Rural Major Collector
-  Rural Minor Arterial
-  Rural Minor Collector
-  Rural Principal Arterial
-  Urban Collector Street
-  Urban Local Street
-  Urban Minor Arterial
-  Urban Principal Arterial
-  City Boundaries
-  Counties

Source: Georgia Department of Transportation
 Maps: Southern Georgia Regional Commission - GIS, 2010
 © SGRC, 2010



Map G-1 Street and Road Classification
 Ware County
 Greater Ware County
 Comprehensive Plan



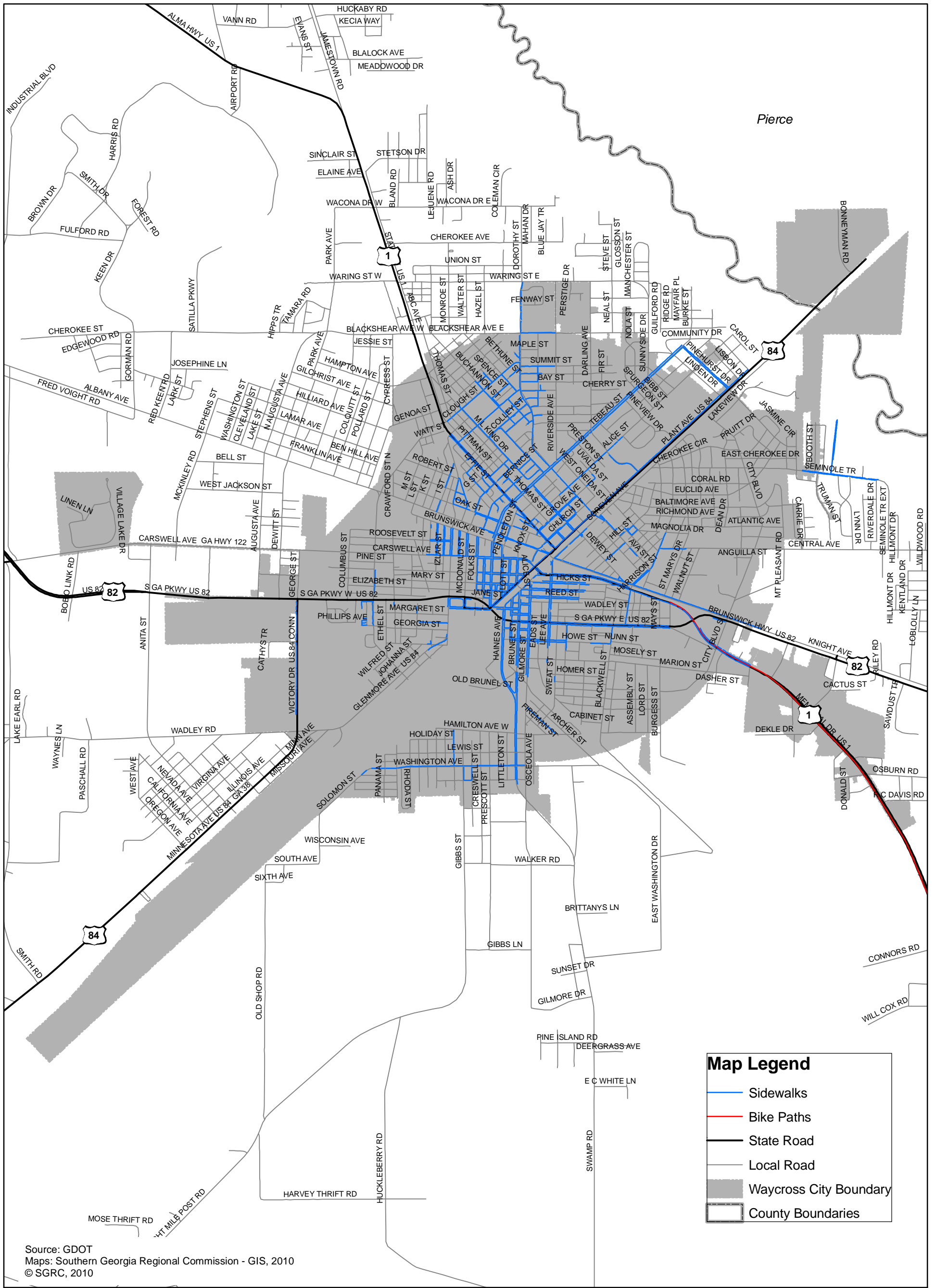


Source: Georgia Department of Transportation
 Maps: Southern Georgia Regional Commission - GIS, 2010
 © SGRC, 2010

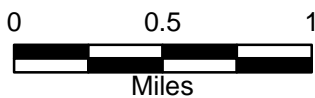


Map G-2 Street and Road Classifications
 City of Waycross
 Greater Ware County
 Comprehensive Plan



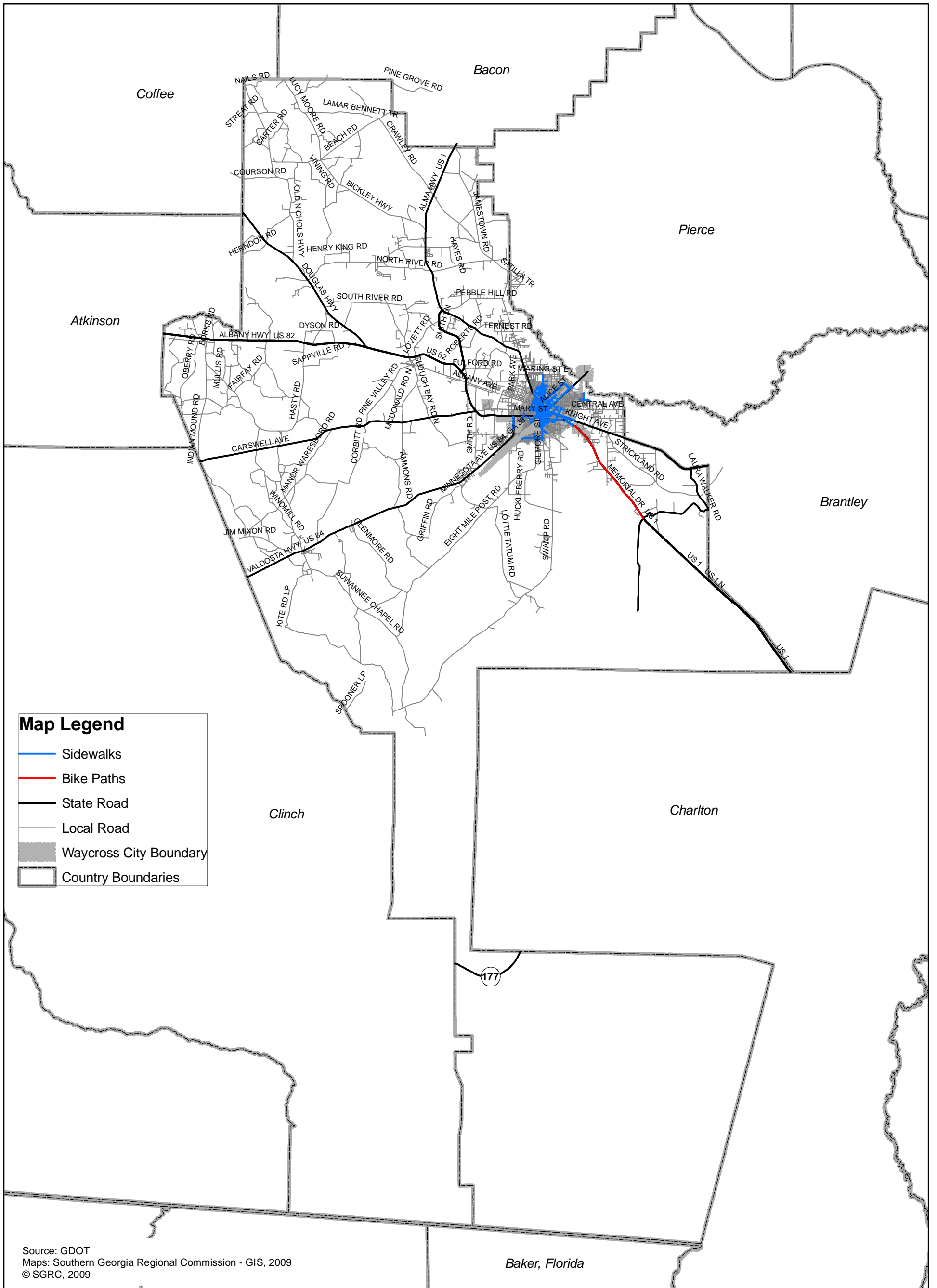


Source: GDOT
 Maps: Southern Georgia Regional Commission - GIS, 2010
 © SGRC, 2010



MAP G-3 CITY OF WAYCROSS BICYCLE AND PEDESTRIAN FACILITIES GREATER WARE COUNTY COMPREHENSIVE PLAN



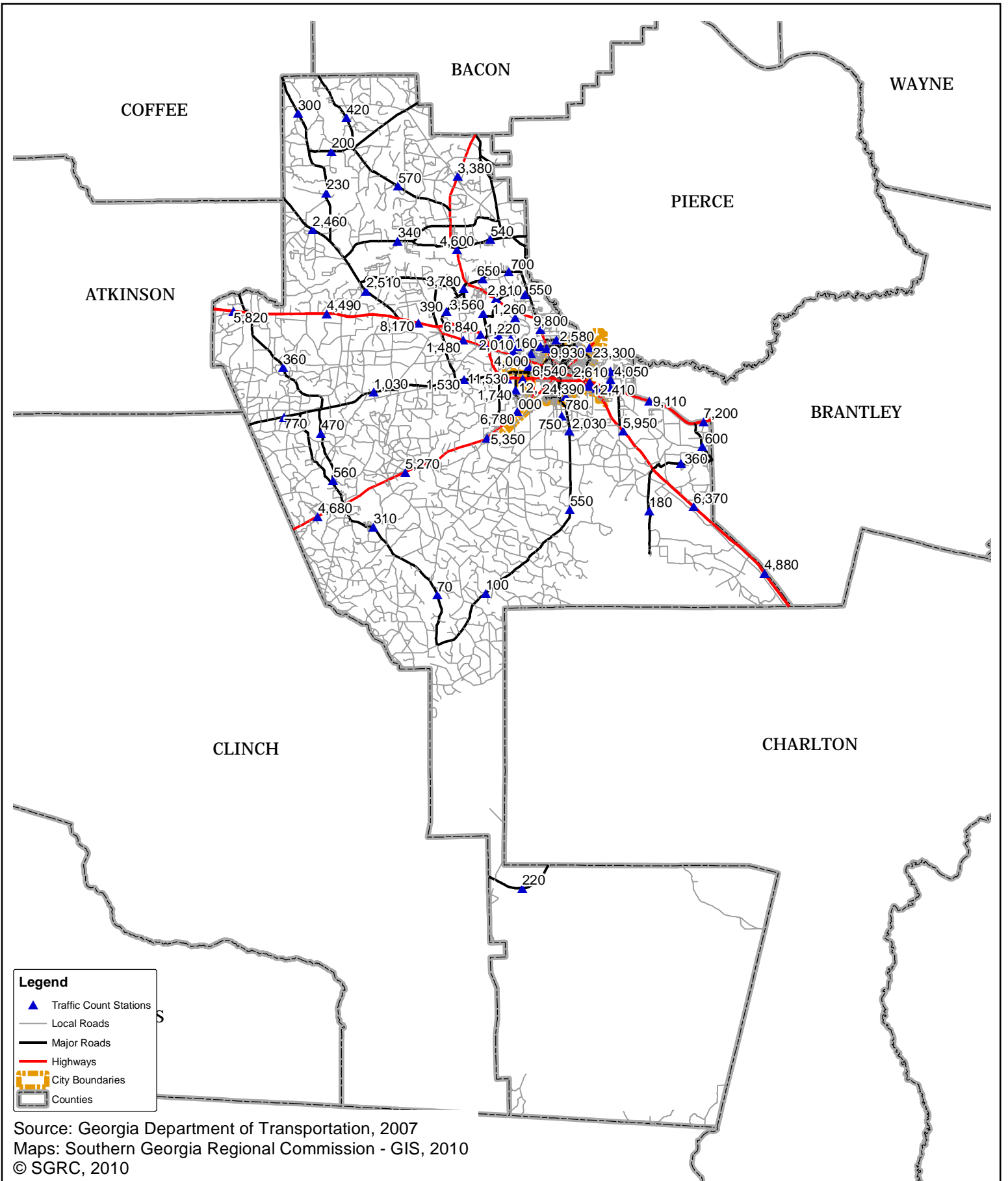


Source: GDOT
 Maps: Southern Georgia Regional Commission - GIS, 2009
 © SGRC, 2009



MAP G-4 WARE COUNTY BICYCLE AND PEDESTRIAN FACILITIES GREATER WARE COUNTY COMPREHENSIVE PLAN





Legend

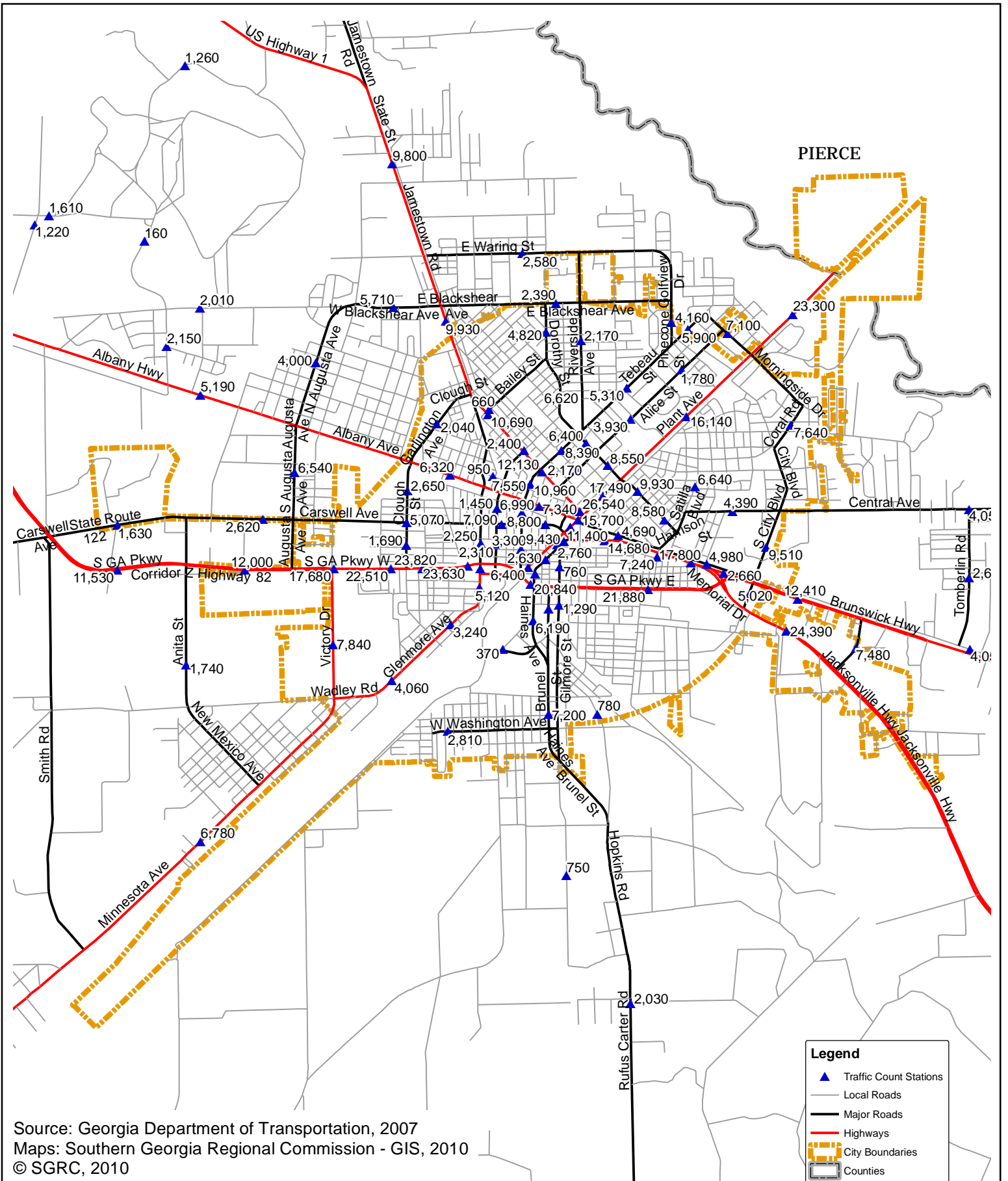
- ▲ Traffic Count Stations
- Local Roads
- Major Roads
- Highways
- City Boundaries
- Counties

Source: Georgia Department of Transportation, 2007
 Maps: Southern Georgia Regional Commission - GIS, 2010
 © SGRC, 2010



Map G-5 Traffic Volumes
 Ware County
 Greater Ware County
 Comprehensive Plan





Source: Georgia Department of Transportation, 2007
 Maps: Southern Georgia Regional Commission - GIS, 2010
 © SGRC, 2010

Legend

- Traffic Count Stations
- Local Roads
- Major Roads
- Highways
- City Boundaries
- Counties



Map G-6 Traffic Volumes
 City of Waycross
 Greater Ware County
 Comprehensive Plan

