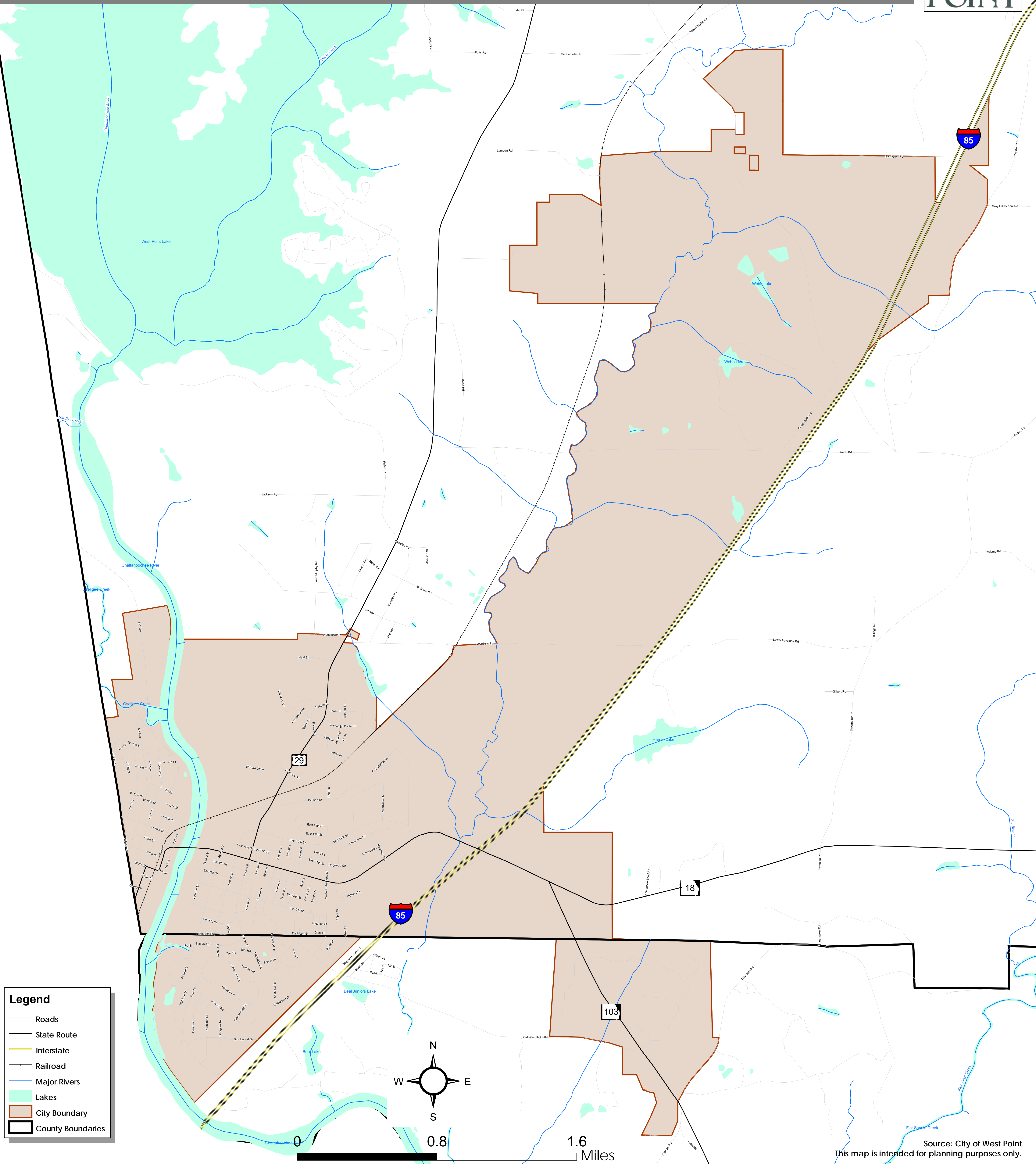




Atlas of Maps

West Point Comprehensive Plan Update 2008 - 2028

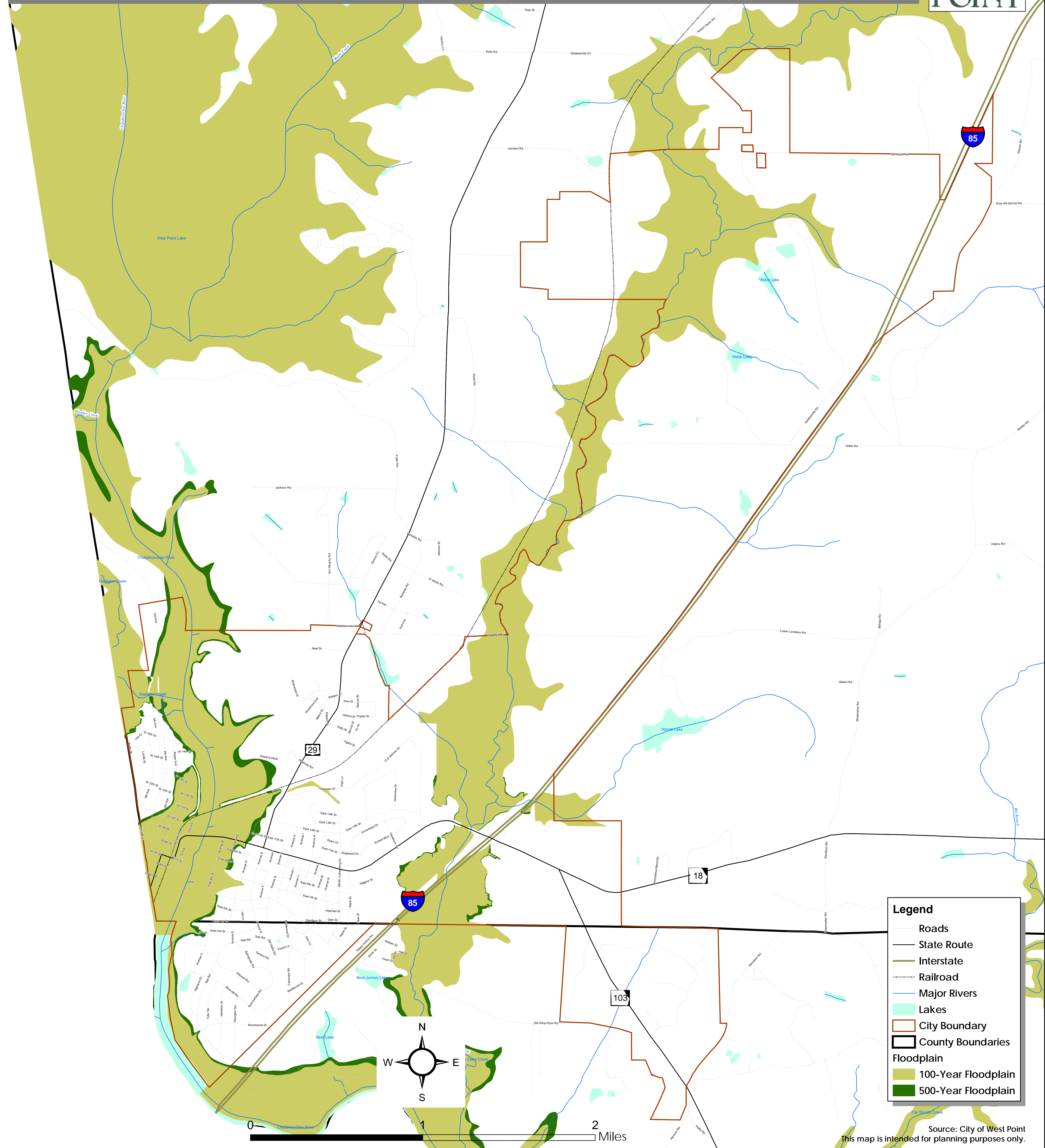


Legend

- Roads
- State Route
- Interstate
- Railroad
- Major Rivers
- Lakes
- City Boundary
- County Boundaries

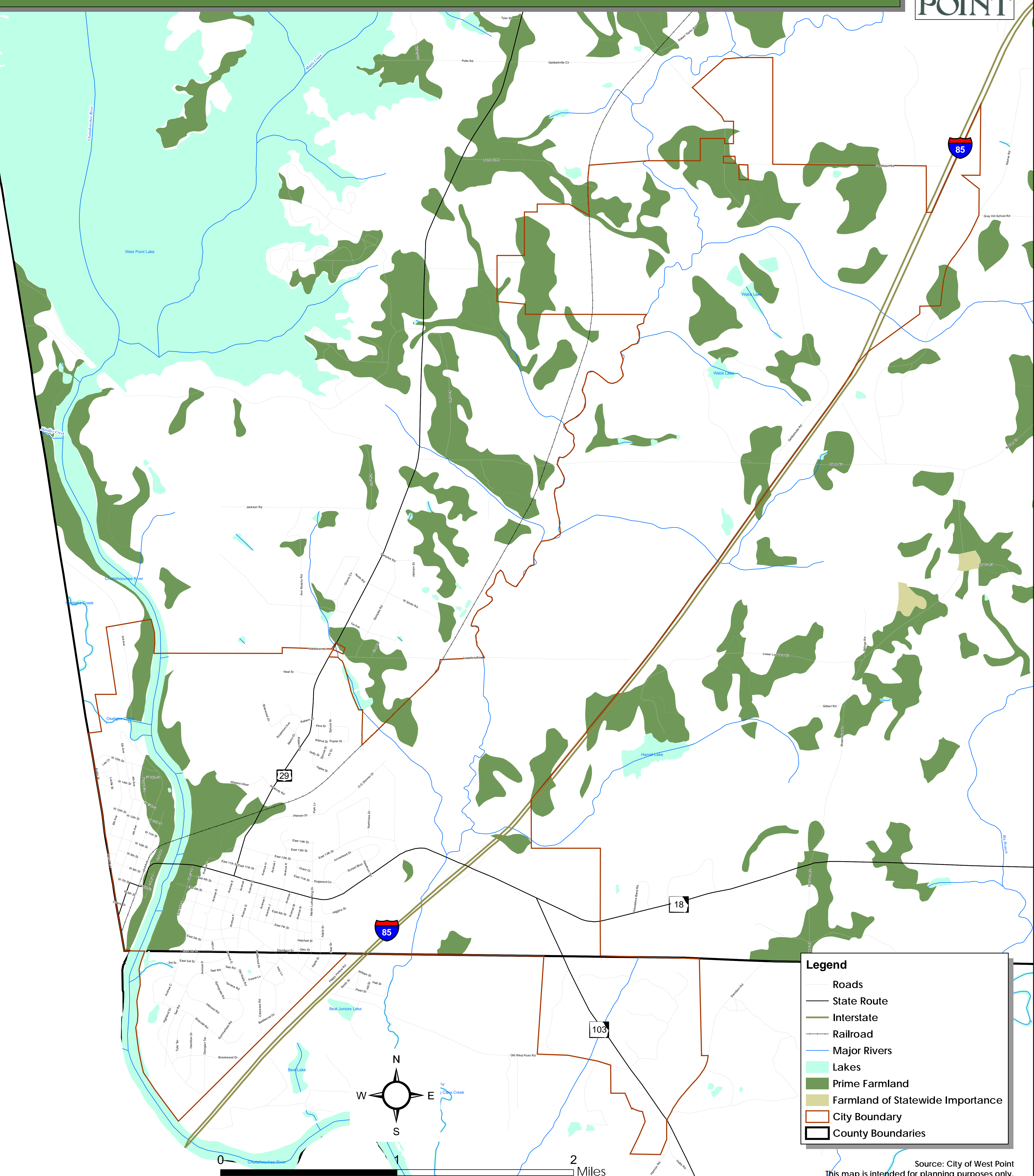
Source: City of West Point
This map is intended for planning purposes only.

West Point Comprehensive Plan Update 2008 - 2028



Source: City of West Point
This map is intended for planning purposes only.

West Point Comprehensive Plan Update 2008 - 2028



Legend

- Roads
- State Route
- Interstate
- Railroad
- Major Rivers
- Lakes
- Prime Farmland
- Farmland of Statewide Importance
- City Boundary
- County Boundaries

Source: City of West Point
This map is intended for planning purposes only.

West Point Comprehensive Plan Update 2008 - 2028



Legend

- Roads
- State Route
- Interstate
- Railroad
- Major Rivers
- Lakes
- County Boundaries
- ★ National Register of Historic Places
- ★ Local Cultural/Tourism Sites
- Historic Markers

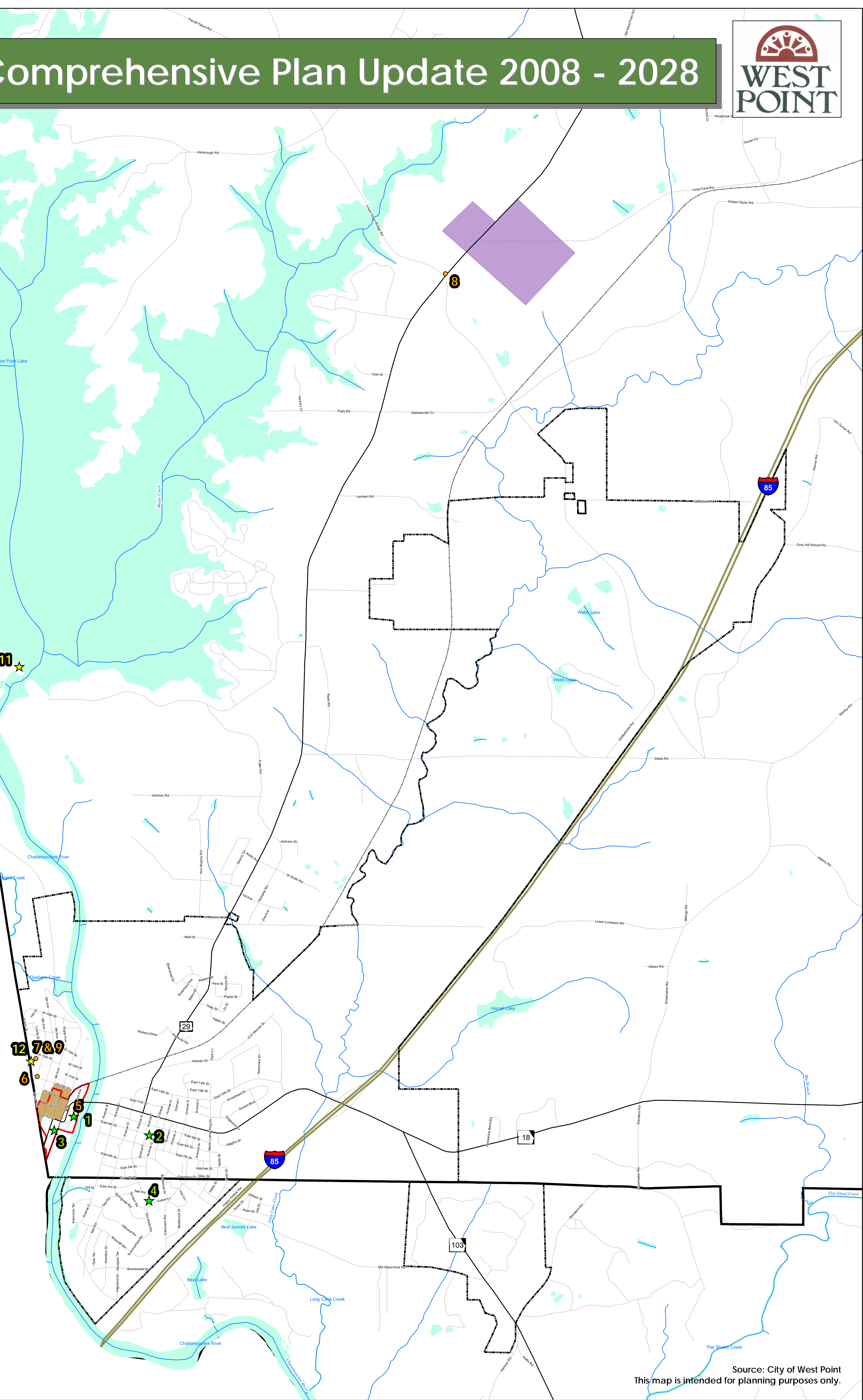
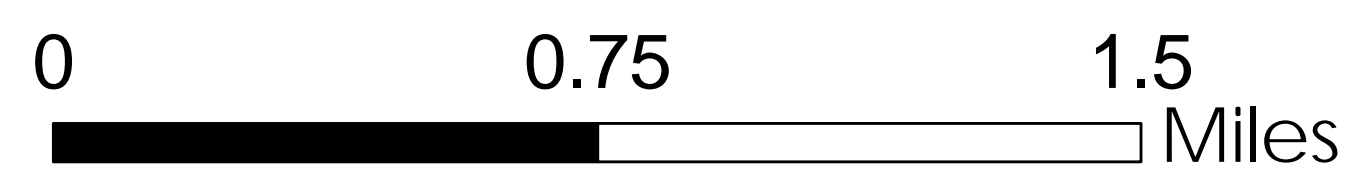
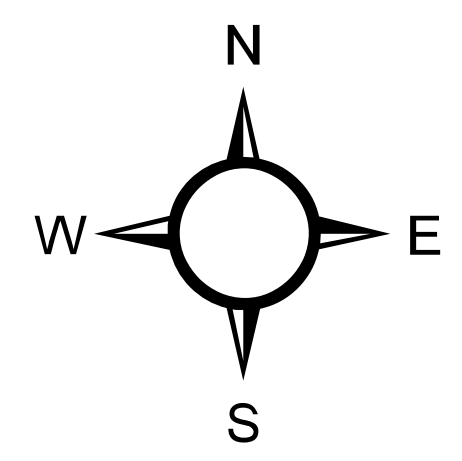
Historic District

- West Point Local Historic District
- Long Cane Historic District
- West Point National Registered Historic Commercial District

Historic Markers	
Commemorative History	Marker Number
5. Battle of West Point - April 16, 1865	GHM 141-1
6. Fort Tyler	GHM 141-2
7. Fort Tyler Cemetery	GHM 141-3
8. Famous Indian Path	GHM 141-4
9. Gen. Robert C. Tyler, C.S.A.	GHM 141-14
10. Ocfuskooche Tallahassee	GHM 141-10

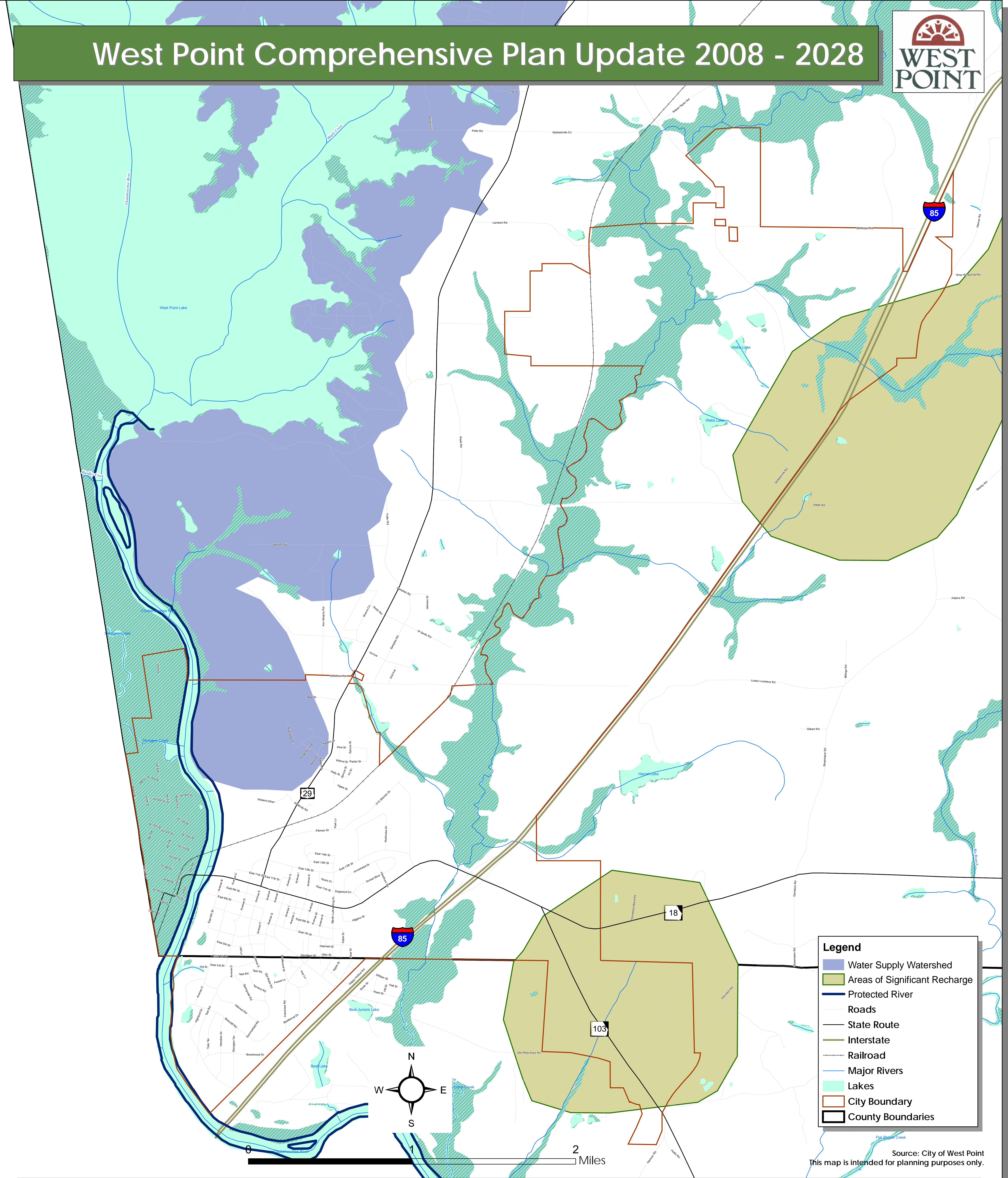
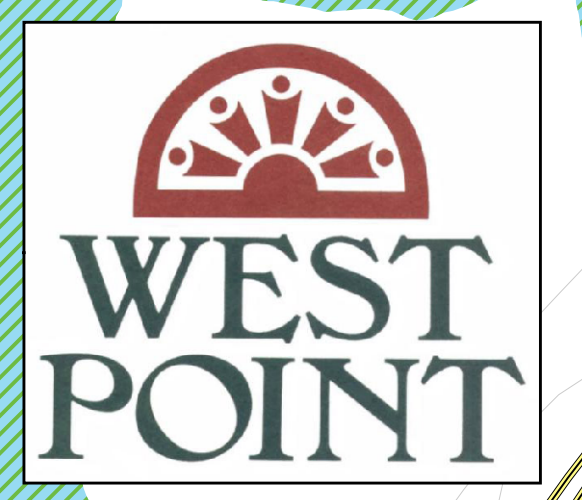
NHRP Sites	
1. Hawkes Children's Library (1919)	
2. West Point Public School (1930)	
3. West Point Freight Depot (ca. 1890)	
4. White Hall	

Local Cultural/Tourism Sites	
11. West Point Lake/Dam Visitor's Center	
12. Fort Tyler	



Source: City of West Point
This map is intended for planning purposes only.

West Point Comprehensive Plan Update 2008 - 2028



Legend

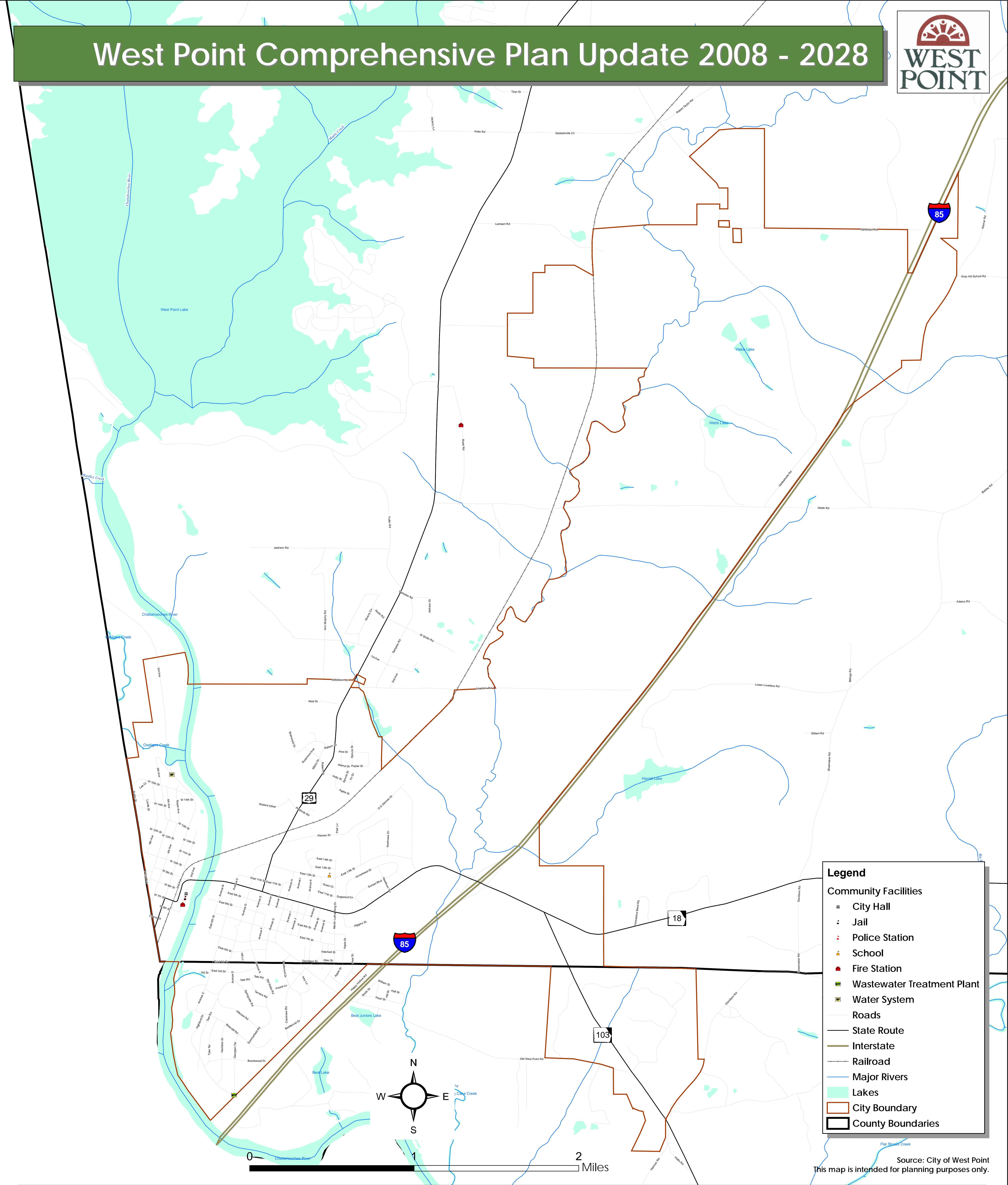
- Water Supply Watershed
- Areas of Significant Recharge
- Protected River
- Roads
- State Route
- Interstate
- Railroad
- Major Rivers
- Lakes
- City Boundary
- County Boundaries

Source: City of West Point
This map is intended for planning purposes only.



Environmental Planning Criteria Map

West Point Comprehensive Plan Update 2008 - 2028



Legend

Community Facilities

- City Hall
- Jail
- Police Station
- School
- Fire Station
- Wastewater Treatment Plant
- Water System

Roads

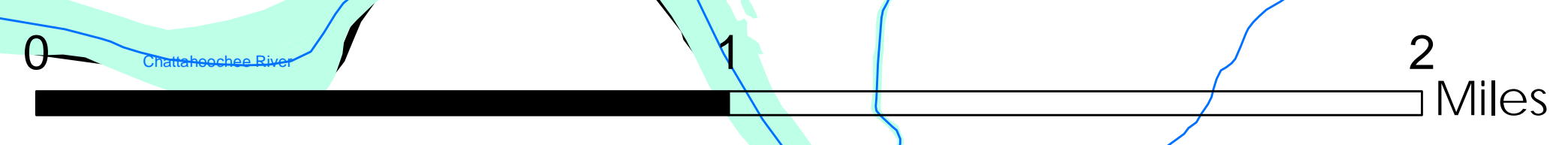
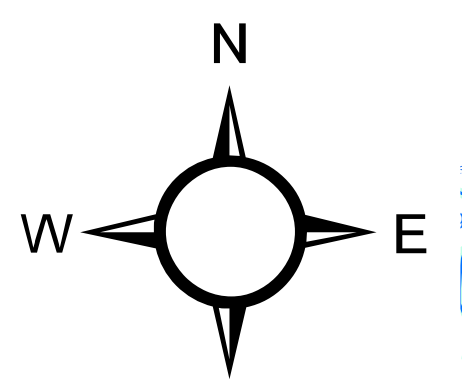
- State Route
- Interstate
- Railroad

Major Rivers

Lakes

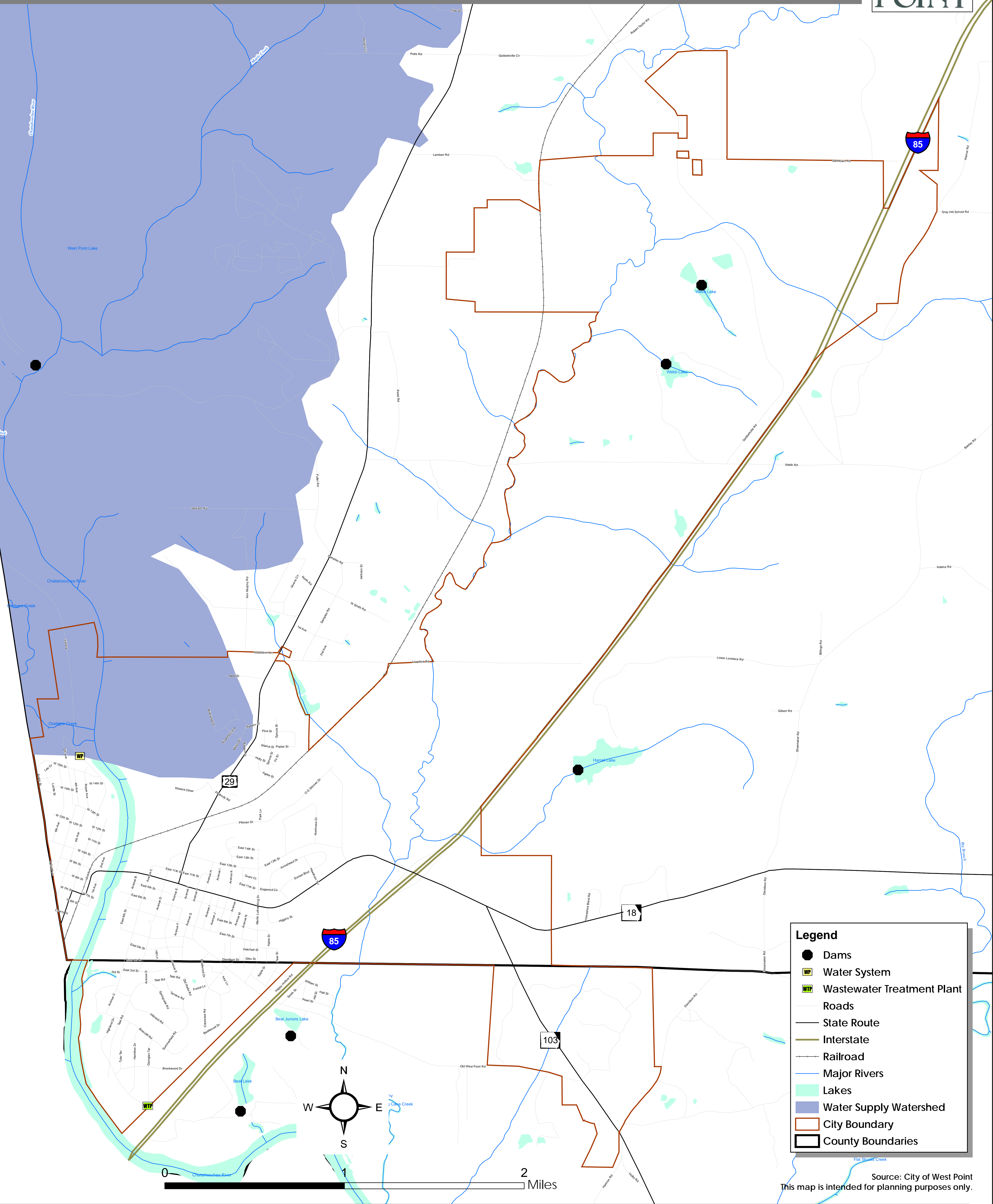
City Boundary

County Boundaries



Source: City of West Point
This map is intended for planning purposes only.

West Point Comprehensive Plan Update 2008 - 2028



Legend

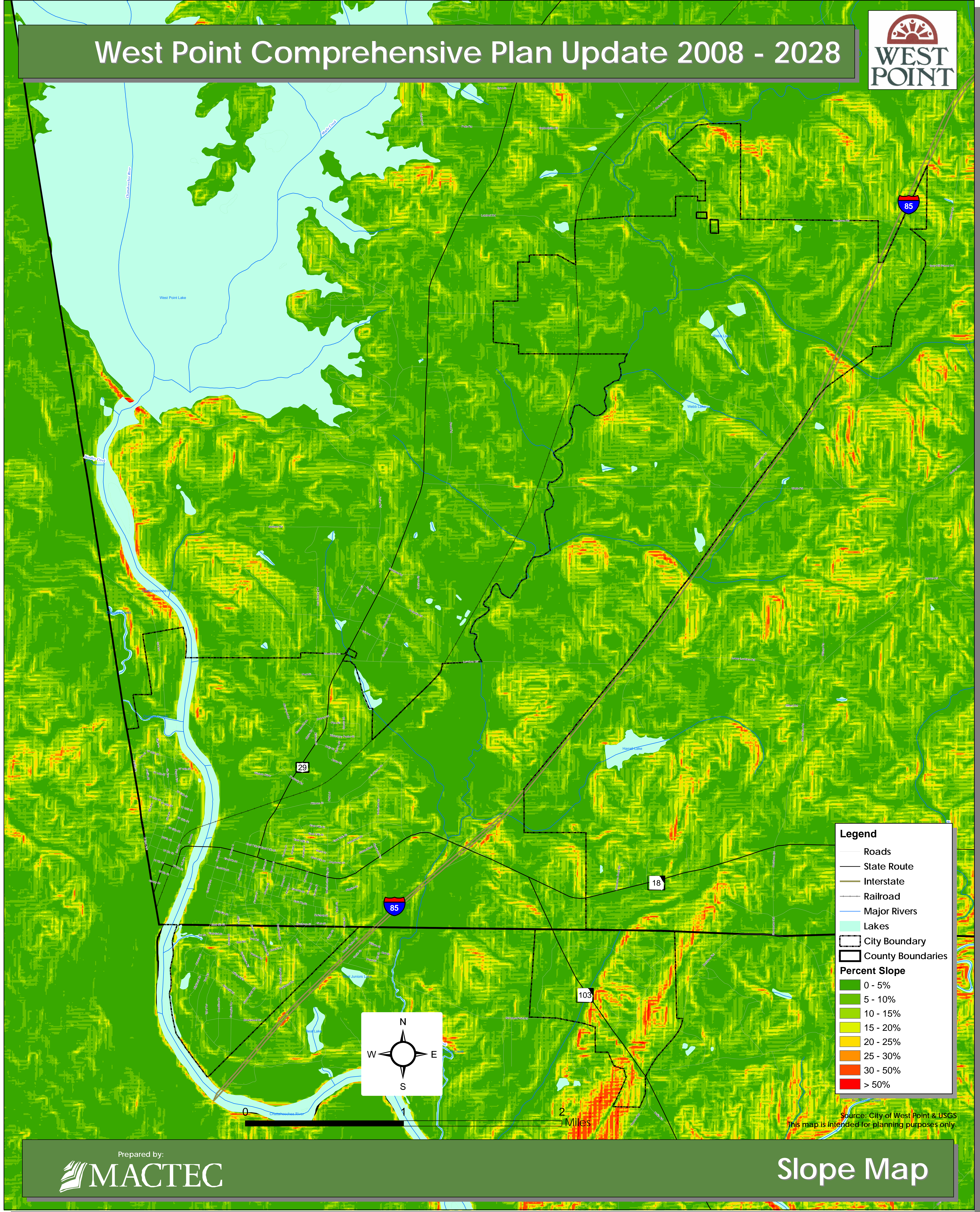
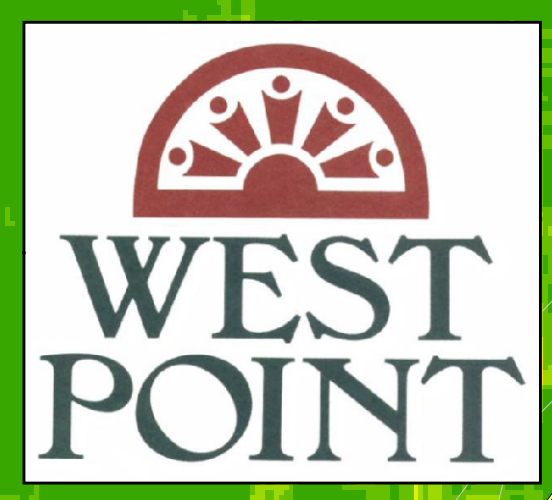
- Dams
- Water System
- Wastewater Treatment Plant
- Roads
- State Route
- Interstate
- Railroad
- Major Rivers
- Lakes
- Water Supply Watershed
- City Boundary
- County Boundaries

Source: City of West Point
This map is intended for planning purposes only.



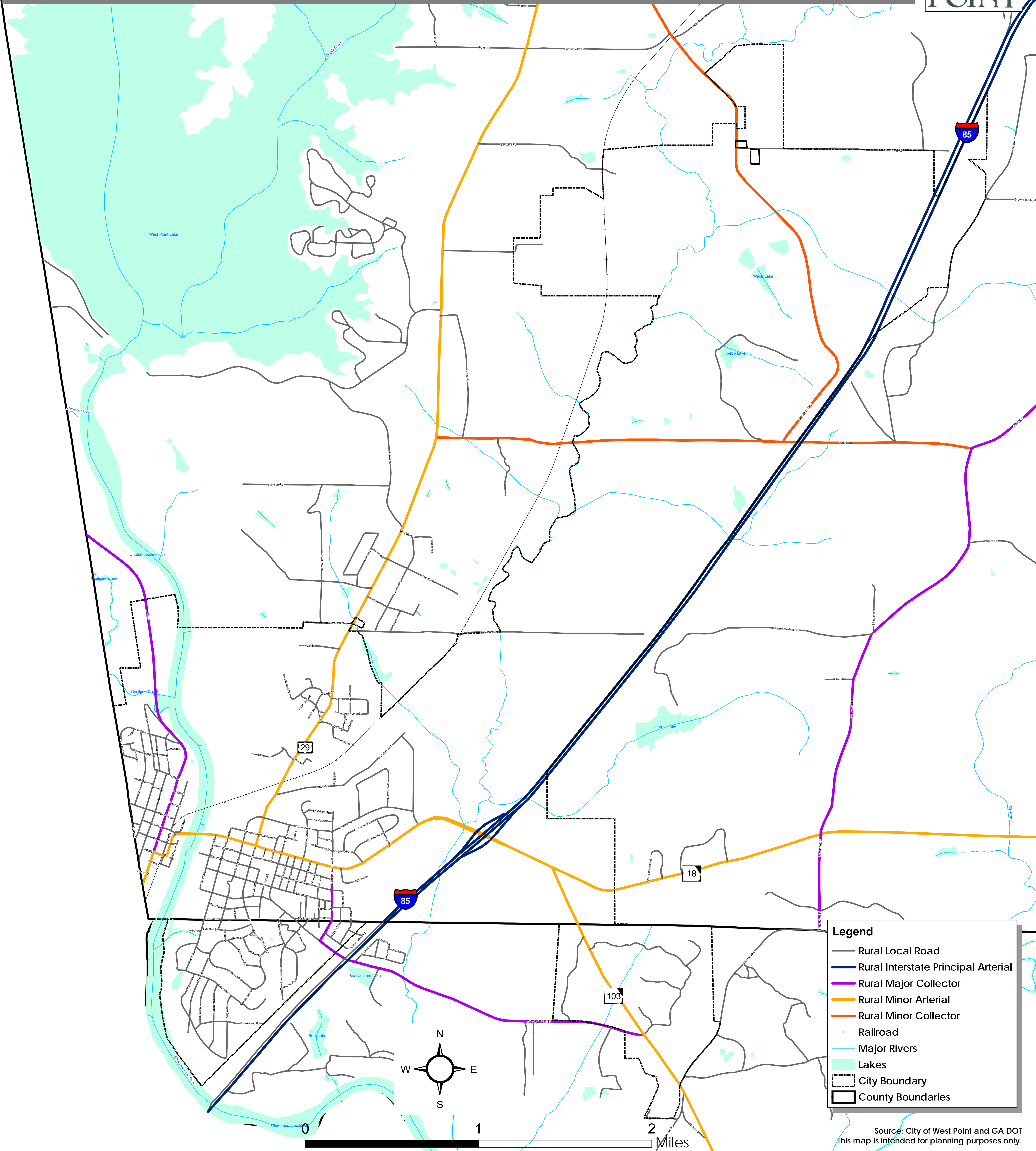
Water Supply and Wastewater Treatment Map

West Point Comprehensive Plan Update 2008 - 2028



Source: City of West Point & USGS
This map is intended for planning purposes only.

West Point Comprehensive Plan Update 2008 - 2028

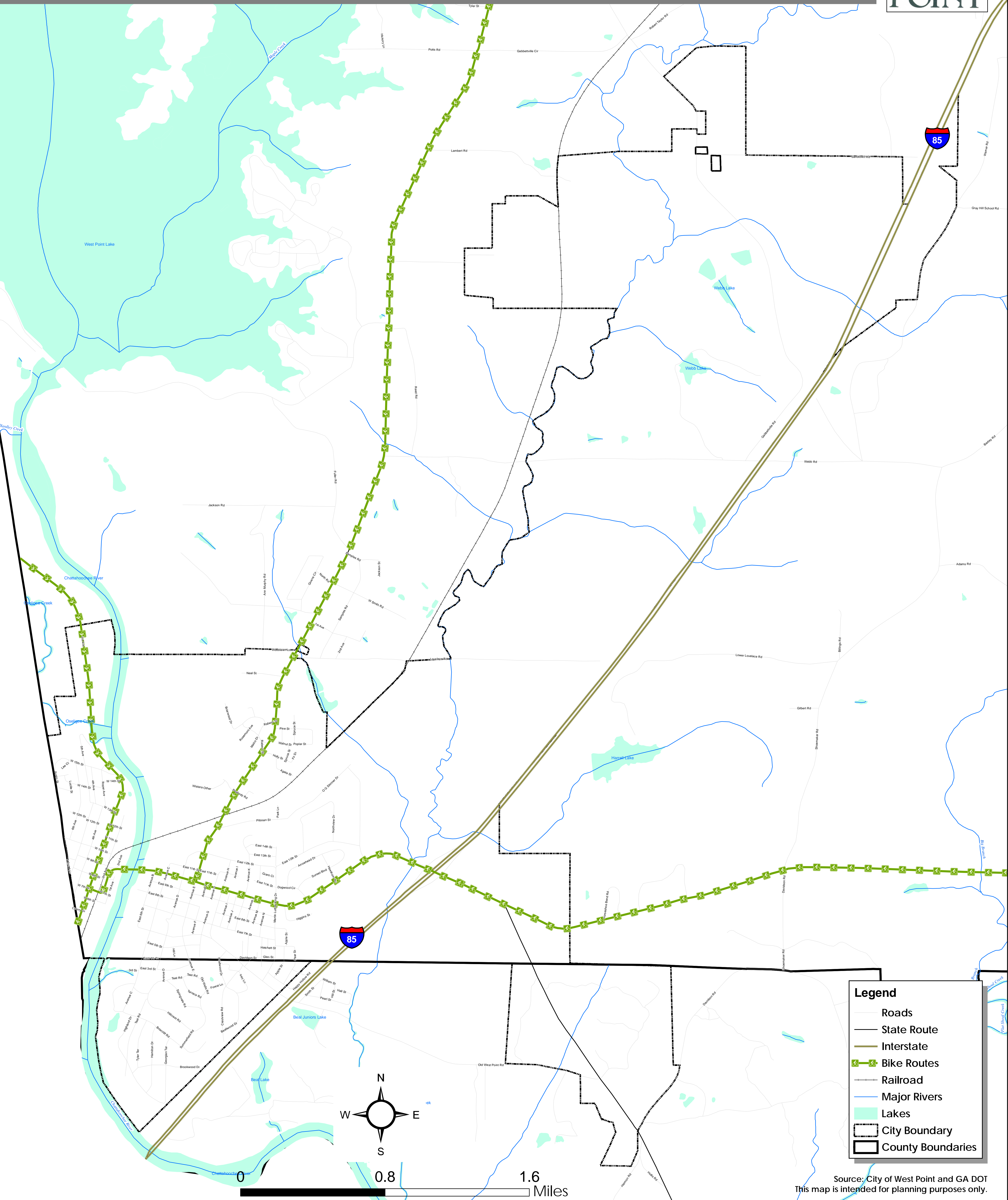


Legend

- Rural Local Road
- Rural Interstate Principal Arterial
- Rural Major Collector
- Rural Minor Arterial
- Rural Minor Collector
- Railroad
- Major Rivers
- Lakes
- City Boundary
- County Boundaries

Source: City of West Point and GA DOT
This map is intended for planning purposes only.

West Point Comprehensive Plan Update 2008 - 2028



Legend

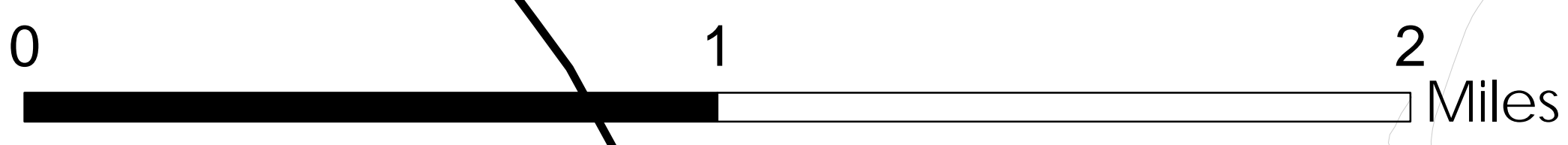
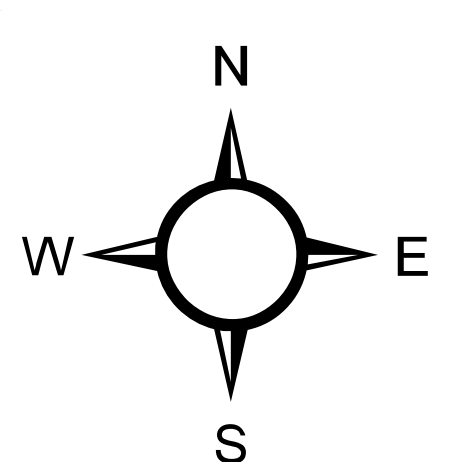
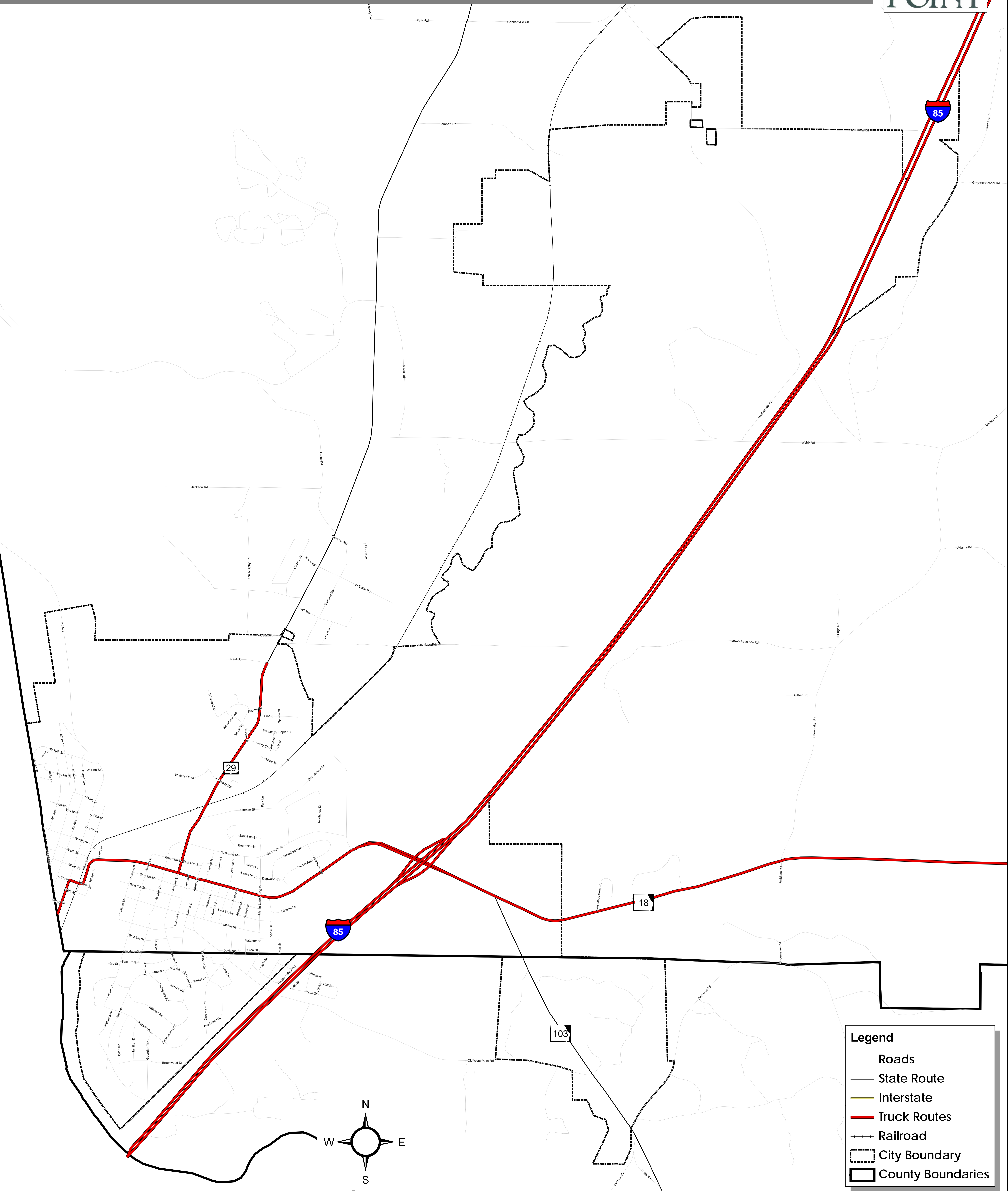
- Roads
- State Route
- Interstate
- Bike Routes
- Railroad
- Major Rivers
- Lakes
- City Boundary
- County Boundaries

Source: City of West Point and GA DOT
This map is intended for planning purposes only.



Transportation - Bike Routes Map

West Point Comprehensive Plan Update 2008 - 2028



Source: City of West Point and GA DOT
This map is intended for planning purposes only.