



SERVICE DELIVERY STRATEGY

**FORM 1**

COUNTY: SPALDING COUNTY

**I. GENERAL INSTRUCTIONS:**

1. FORM 1 is required for **ALL** SDS submittals. Only one set of these forms should be submitted per county. The completed forms shall clearly present the collective agreement reached by all cities and counties that were party to the service delivery strategy.
2. List each local government and/or authority that provides services included in the service delivery strategy in Section II below.
3. List all services provided or primarily funded by each general purpose local government and/or authority within the county that are continuing *without change* in Section III, below. (It is acceptable to break a service into separate components if this will facilitate description of the service delivery strategy.)

<p><b>OPTION A</b> <i>Revising or Adding to the SDS</i></p>	<p><b>OPTION B</b> <i>Extending the Existing SDS</i></p>
<ol style="list-style-type: none"> <li>4. List all services provided or primarily funded by each general purpose local government and authority within the county which are revised or added to the SDS in Section IV, below. (It is acceptable to break a service into separate components if this will facilitate description of the service delivery strategy.)</li> <li>5. For <b>each</b> service or service component listed in Section IV, complete a separate, updated <i>Summary of Service Delivery Arrangements</i> form (FORM 2).</li> <li>6. Complete one copy of the <i>Certifications</i> form (FORM 4) and have it signed by the authorized representatives of participating local governments. [Please note that DCA cannot validate the strategy unless it is signed by the local governments required by law (see Instructions, FORM 4).]</li> </ol>	<ol style="list-style-type: none"> <li>4. In Section IV type, "NONE."</li> <li>5. Complete one copy of the <i>Certifications for Extension of Existing SDS</i> form (FORM 5) and have it signed by the authorized representatives of the participating local governments. [Please note that DCA cannot validate the strategy unless it is signed by the local governments required by law (see Instructions, FORM 5).]</li> <li>6. Proceed to step 7, below.</li> </ol> <div data-bbox="841 1182 1539 1413" style="background-color: #000080; color: white; padding: 10px; text-align: center;"> <p><b>For answers to most frequently asked questions on Georgia's Service Delivery Act, links and helpful publications, visit DCA's website at <a href="http://www.dca.ga.gov/development/PlanningQualityGrowth/programs/servicedelivery.asp" style="color: white;">http://www.dca.ga.gov/development/PlanningQualityGrowth/programs/servicedelivery.asp</a>, or call the Office of Planning and Quality Growth at (404) 679-5279.</b></p> </div>

7. If any of the conditions described in the existing *Summary of Land Use Agreements* form (FORM 3) have changed or if it has been ten (10) or more years since the most recent FORM 3 was filed, update and include FORM 3 with the submittal.
8. Provide the completed forms and any attachments to your regional commission. The regional commission will upload digital copies of the SDS documents to the Department's password-protected web-server.

**NOTE: ANY FUTURE CHANGES TO THE SERVICE DELIVERY ARRANGEMENTS DESCRIBED ON THESE FORMS WILL REQUIRE AN UPDATE OF THE SERVICE DELIVERY STRATEGY AND SUBMITTAL OF REVISED FORMS AND ATTACHMENTS TO THE GEORGIA DEPARTMENT OF COMMUNITY AFFAIRS UNDER THE "OPTION A" PROCESS DESCRIBED, ABOVE.**

## **II. LOCAL GOVERNMENTS INCLUDED IN THE SERVICE DELIVERY STRATEGY:**

In this section, list all local governments (including cities located partially within the county) and authorities that provide services included in the service delivery strategy.

Spalding County, City of Griffin, City of Orchard Hill and the City of Sunny Side

## **III. SERVICES INCLUDED IN THE EXISTING SERVICE DELIVERY STRATEGY THAT ARE BEING EXTENDED WITHOUT CHANGE:**

In this section, list each service or service component already included in the existing SDS which will continue as previously agreed with no need for modification.

1. County Administration
2. City Administration
3. City Police
4. Sheriff
5. Tax Appraisal and Assessment
6. Coroner
7. Courts
8. Adult and Juvenile Probation
9. Health and Human Services
10. Cooperative Extension
11. Emergency Management
12. City Garage
13. Board of Elections
14. Voter Registration
15. Parks and Recreation
16. Airport
17. Solid Waste
18. Planning
19. Zoning
20. Building Inspections
21. Code Enforcement
22. Tax Billing and Collections
23. Stormwater
24. Water
26. Animal Control
27. Animal Shelter
28. Correctional Institution
29. Fire
30. Public Works
31. Street Lighting
32. Griffin Downtown Development Authority
33. Griffin-Spalding Development Authority
34. Spalding Co. Water & Sewerage Facilities Auth.
35. Butts, Henry, Lamar & Spalding Joint Development Auth.
36. Griffin-Spalding Hospital Authority
37. Library Services
38. Emergency Communications (911)
39. Water Distribution

**IV. SERVICES THAT ARE BEING REVISED OR ADDED IN THIS SUBMITTAL:**

In this section, list each new service or new service component which is being added and each service or service component which is being revised in this submittal. For each item listed here, a separate Summary of Service Delivery Arrangements form (FORM 2) must be completed.

25. Wastewater



SERVICE DELIVERY STRATEGY

**FORM 2: Summary of Service Delivery Arrangements**

**Instructions:**

**Make copies of this form and complete one for each service listed on FORM 1, Section IV.** Use EXACTLY the same service names listed on FORM 1. Answer each question below, attaching additional pages as necessary. If the contact person for this service (listed at the bottom of the page) changes, this should be reported to the Department of Community Affairs.

**COUNTY: SPALDING COUNTY**

**Service: Wastewater**

1. Check one box that best describes the agreed upon delivery arrangement for this service:

- a.)  Service will be provided countywide (i.e., including all cities and unincorporated areas) by a single service provider. (If this box is checked, identify the government, authority or organization providing the service.):
  
- b.)  Service will be provided only in the unincorporated portion of the county by a single service provider. (If this box is checked, identify the government, authority or organization providing the service.): **Type Name of Government, Authority or Organization Here**
  
- c.)  One or more cities will provide this service only within their incorporated boundaries, and the service will not be provided in unincorporated areas. (If this box is checked, identify the government(s), authority or organization providing the service: **Type Name of Government, Authority or Organization Here**
  
- d.)  One or more cities will provide this service only within their incorporated boundaries, and the county will provide the service in unincorporated areas. (If this box is checked, identify the government(s), authority or organization providing the service.): **Type Name of Government, Authority or Organization Here**
  
- e.)  Other (If this box is checked, **attach a legible map delineating the service area of each service provider**, and identify the government, authority, or other organization that will provide service within each service area.): **City of Griffin, Spalding County, Henry County Water Authority**

2. In developing this strategy, were overlapping service areas, unnecessary competition and/or duplication of this service identified?

**Yes** (if "Yes," you must attach additional documentation as described, below)

**No**

If these conditions will continue under this strategy, **attach an explanation for continuing the arrangement** (i.e., overlapping but higher levels of service (See O.C.G.A. 36-70-24(1)), overriding benefits of the duplication, or reasons that overlapping service areas or competition cannot be eliminated).

If these conditions will be eliminated under the strategy, **attach an implementation schedule** listing each step or action that will be taken to eliminate them, the responsible party and the agreed upon deadline for completing it.

SDS FORM 2, continued

3. List each government or authority that will help to pay for this service and indicate how the service will be funded (e.g., enterprise funds, user fees, general funds, special service district revenues, hotel/motel taxes, franchise taxes, impact fees, bonded indebtedness, etc.).

<i>Local Government or Authority</i>	<i>Funding Method</i>
Spalding County	Water & Sewerage Fund Revenues, User Fees, SPLOST
City of Griffin	Wastewater Fund Revenues
Henry County Water Authority	Wastewater Fund Revenues

4. How will the strategy change the previous arrangements for providing and/or funding this service within the county?

Services provided by entities as outlined on the attached maps.

5. List any formal service delivery agreements or intergovernmental contracts that will be used to implement the strategy for this service:

<i>Agreement Name</i>	<i>Contracting Parties</i>	<i>Effective and Ending Dates</i>
Griffin-Spalding County Comprehensive Wastewater Management Plan	City of Griffin, Spalding County	2010-2030

6. What other mechanisms (if any) will be used to implement the strategy for this service (e.g., ordinances, resolutions, local acts of the General Assembly, rate or fee changes, etc.), and when will they take effect?

Service area maps were revised to provide clarification on the boundaries of the service areas within City of Griffin, Spalding County and Henry County Water Authority. The residents of the Heron Bay Subdivision at Johnson Road and Trestle Road in northeast Spalding County receive wastewater services from Henry County.

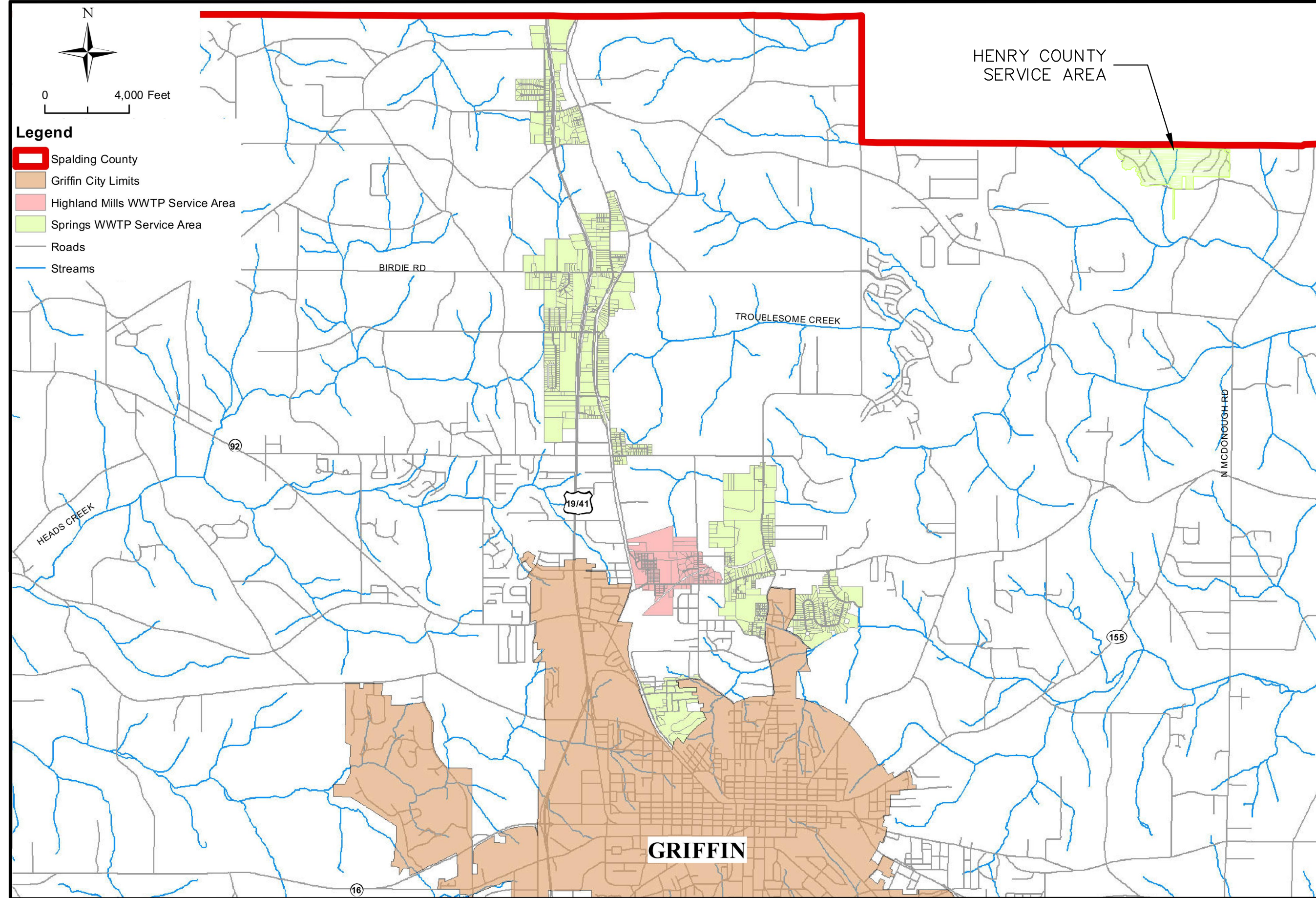
7. Person completing form: **William P. Wilson, Jr. County Manager**  
 Phone number: **770-467-4224**      Date completed: 3/6/2019

8. Is this the person who should be contacted by state agencies when evaluating whether proposed local government projects are consistent with the service delivery strategy?  Yes  No

If not, provide designated contact person(s) and phone number(s) below:



SPRINGS WWTP SERVICE AREA MAP



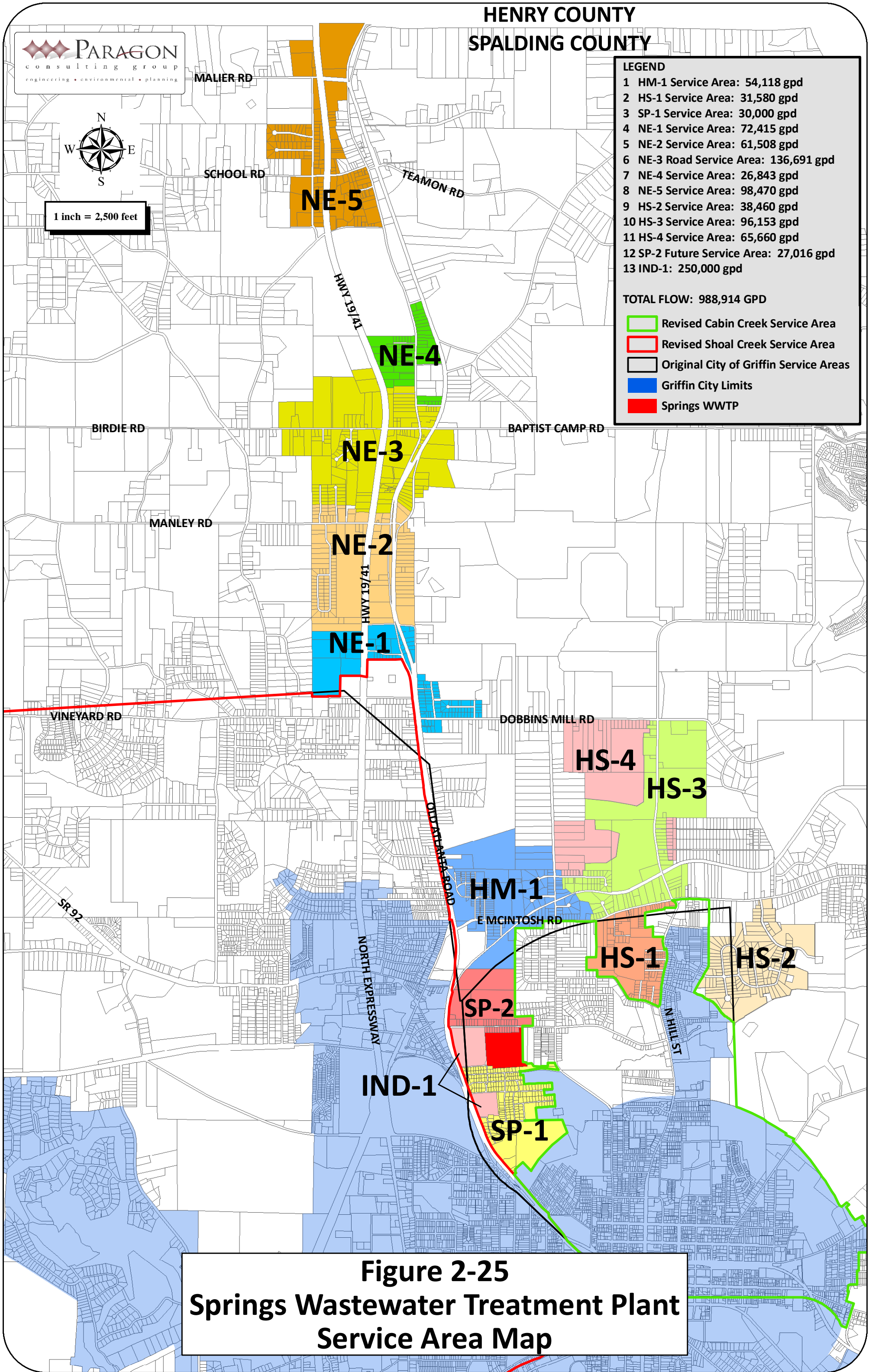


**HENRY COUNTY  
SPALDING COUNTY**



1 inch = 2,500 feet

LEGEND	
1	HM-1 Service Area: 54,118 gpd
2	HS-1 Service Area: 31,580 gpd
3	SP-1 Service Area: 30,000 gpd
4	NE-1 Service Area: 72,415 gpd
5	NE-2 Service Area: 61,508 gpd
6	NE-3 Road Service Area: 136,691 gpd
7	NE-4 Service Area: 26,843 gpd
8	NE-5 Service Area: 98,470 gpd
9	HS-2 Service Area: 38,460 gpd
10	HS-3 Service Area: 96,153 gpd
11	HS-4 Service Area: 65,660 gpd
12	SP-2 Future Service Area: 27,016 gpd
13	IND-1: 250,000 gpd
<b>TOTAL FLOW: 988,914 GPD</b>	
	Revised Cabin Creek Service Area
	Revised Shoal Creek Service Area
	Original City of Griffin Service Areas
	Griffin City Limits
	Springs WWTP

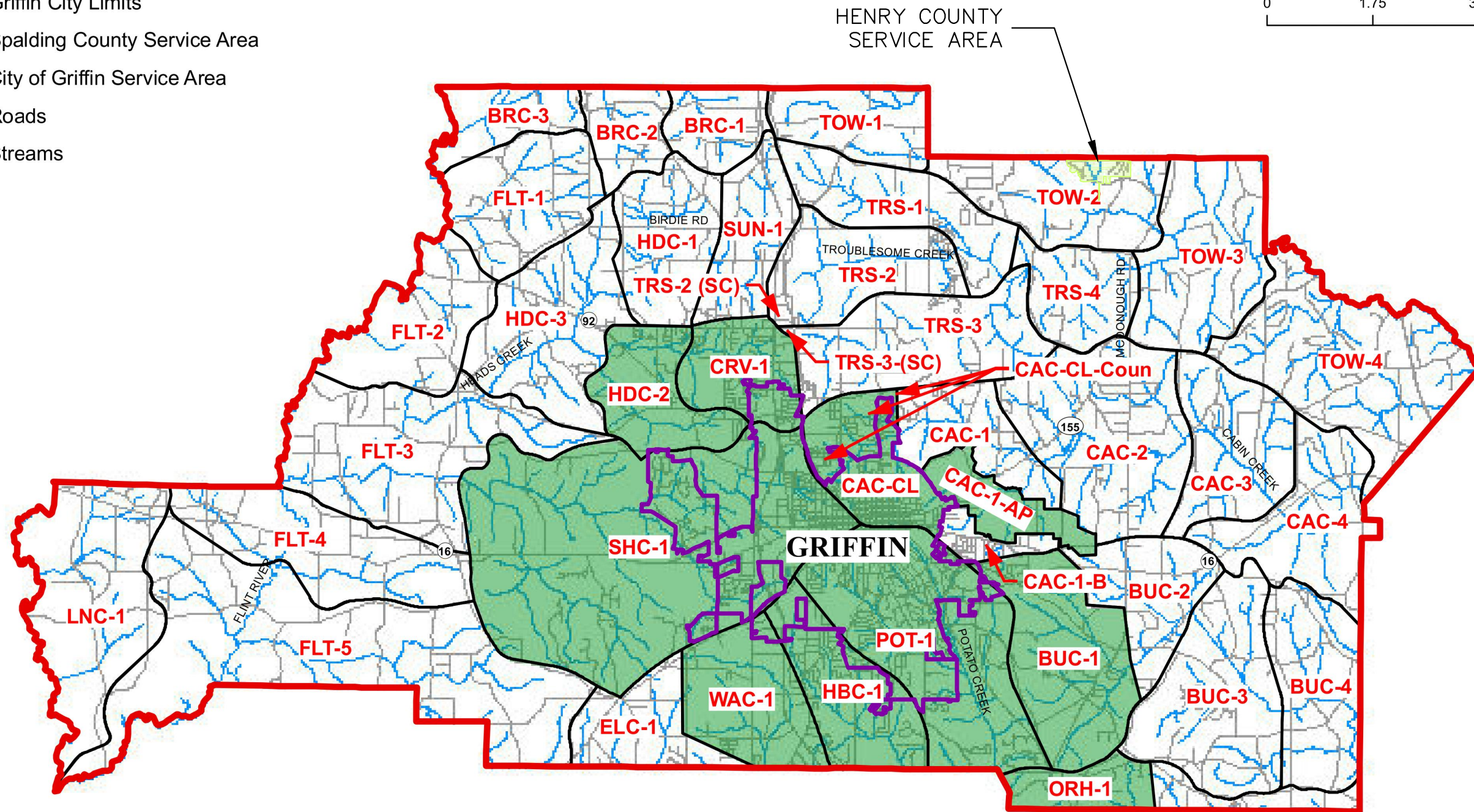
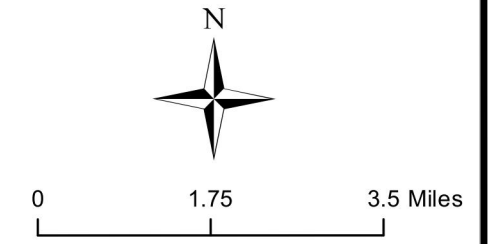


**Figure 2-25  
Springs Wastewater Treatment Plant  
Service Area Map**



**Legend**

- Spalding County
- Griffin City Limits
- Spalding County Service Area
- City of Griffin Service Area
- Roads
- Streams



CONSULTING ENGINEER:  
**ESI**  
 ENGINEERING STRATEGIES, INC.  
 Marietta, Georgia  
 Phone: (770)-429-0001

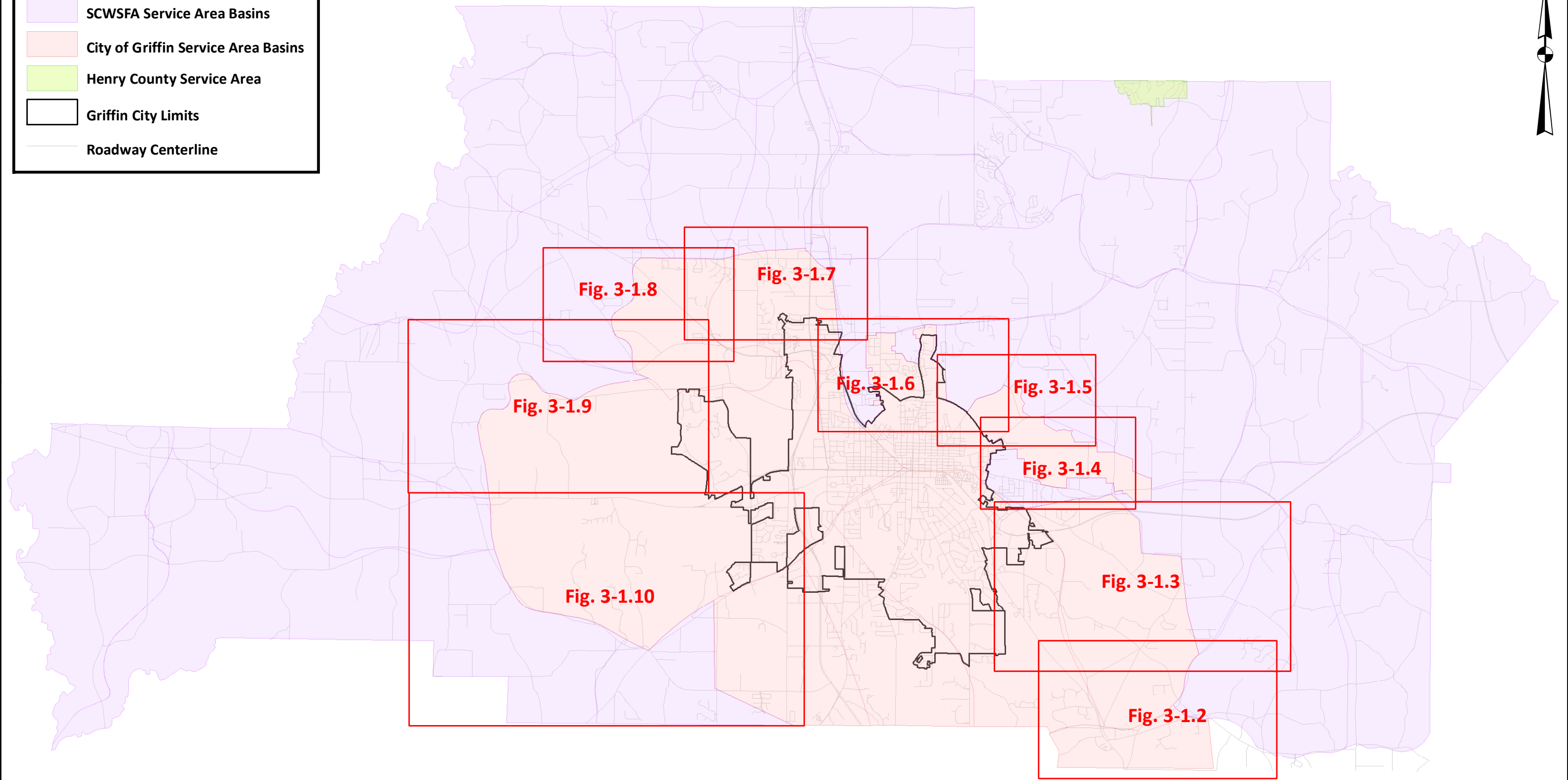
SERVICE AREA MAP

FIGURE NO.  
**3-1**

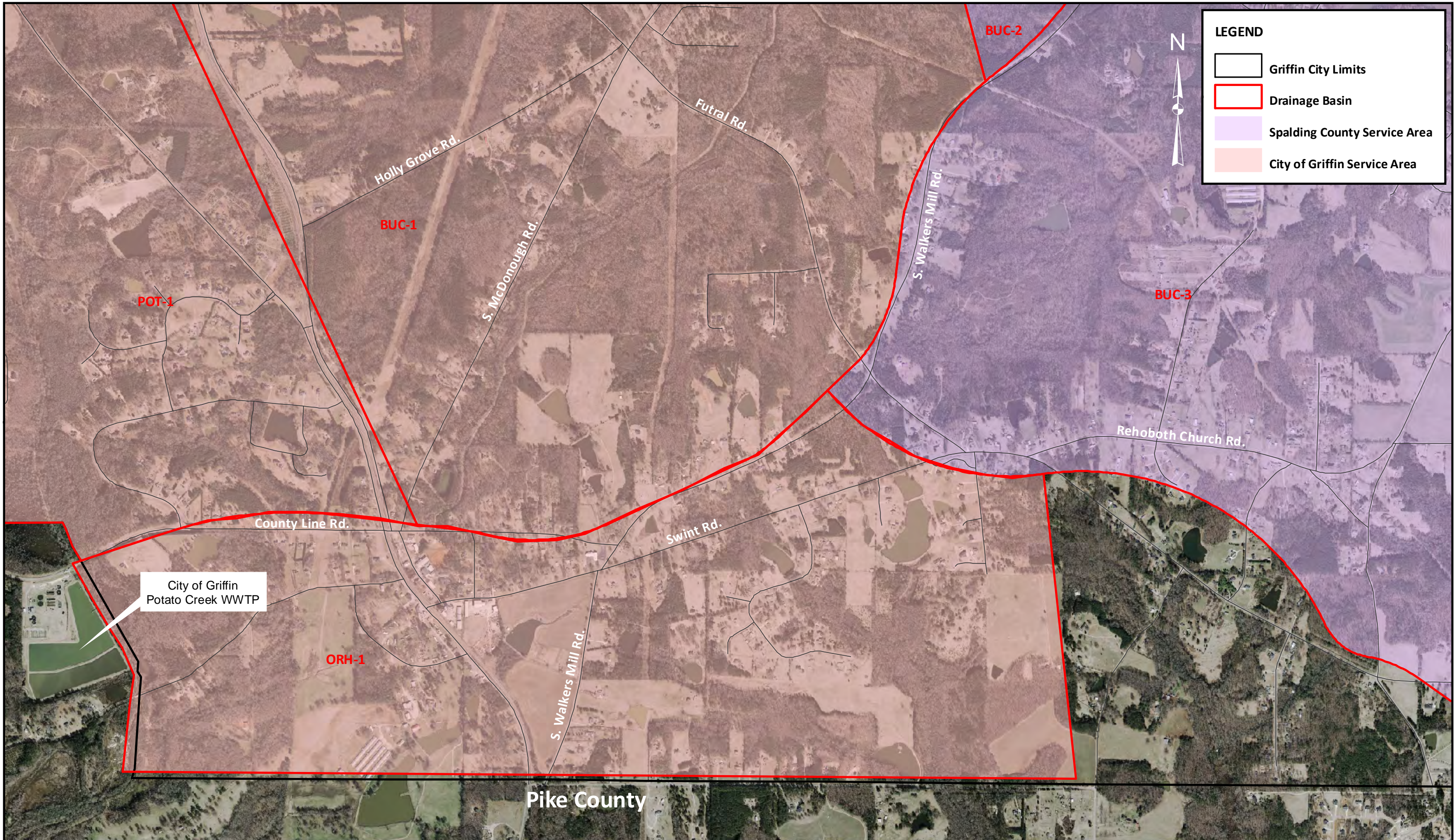


**LEGEND**

- SCWSFA Service Area Basins
- City of Griffin Service Area Basins
- Henry County Service Area
- Griffin City Limits
- Roadway Centerline







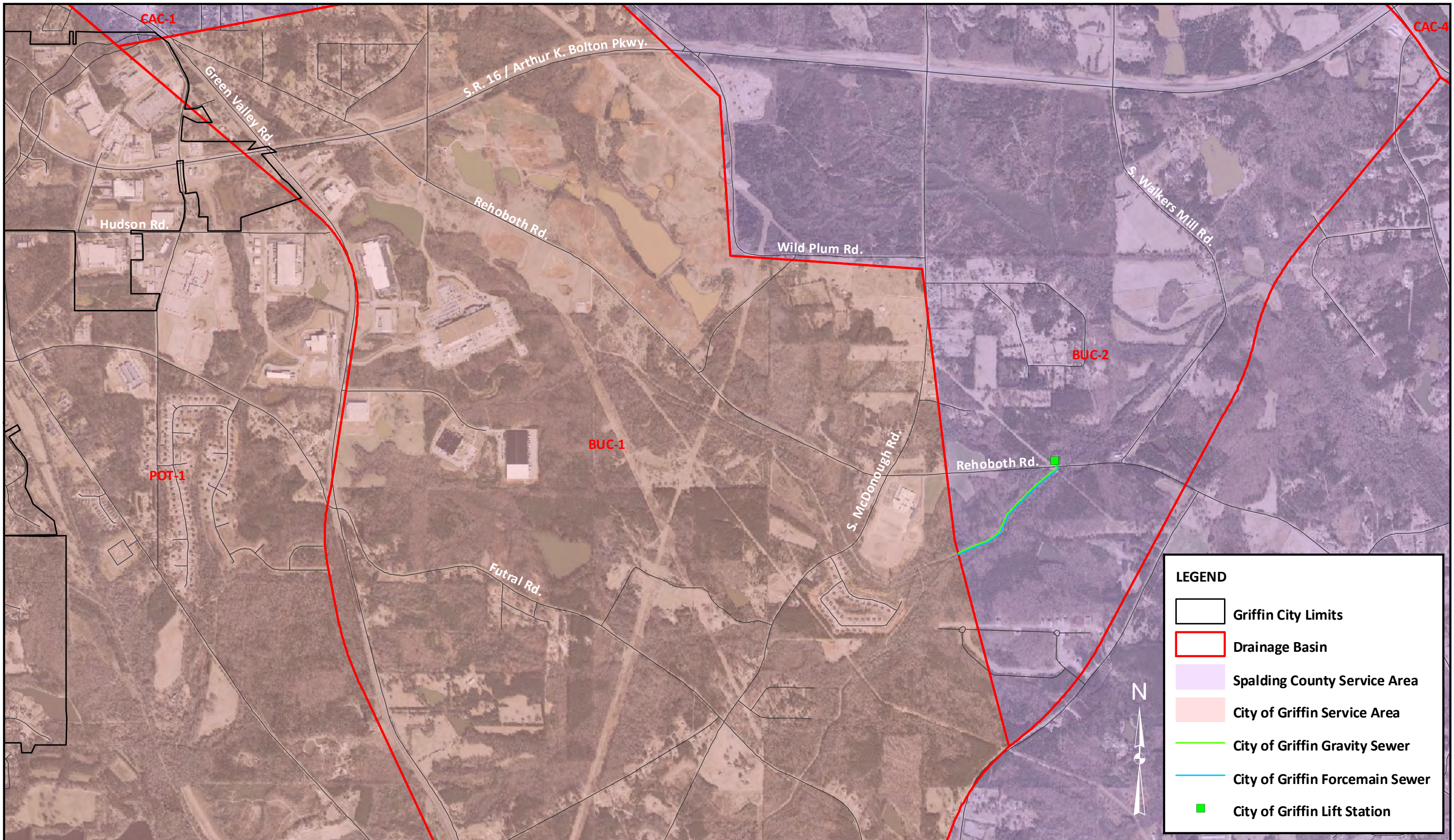
**LEGEND**

- Griffin City Limits
- Drainage Basin
- Spalding County Service Area
- City of Griffin Service Area



City of Griffin  
Potato Creek WWTP



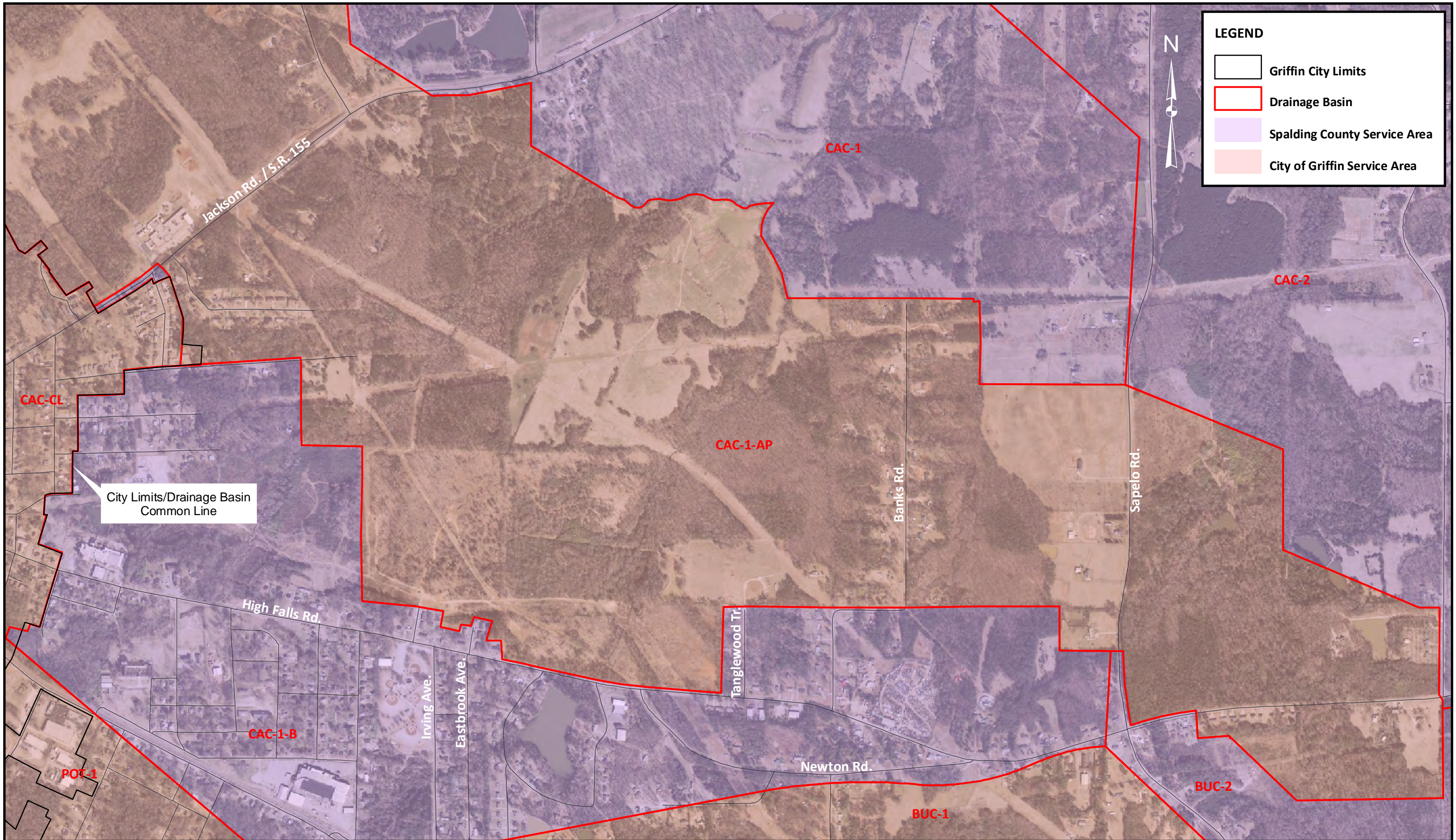


**LEGEND**

- Griffin City Limits
- Drainage Basin
- Spalding County Service Area
- City of Griffin Service Area
- City of Griffin Gravity Sewer
- City of Griffin Forcemain Sewer
- City of Griffin Lift Station

# GRIFFIN - SPALDING COUNTY SERVICE AREA DRAINAGE BASIN MAP





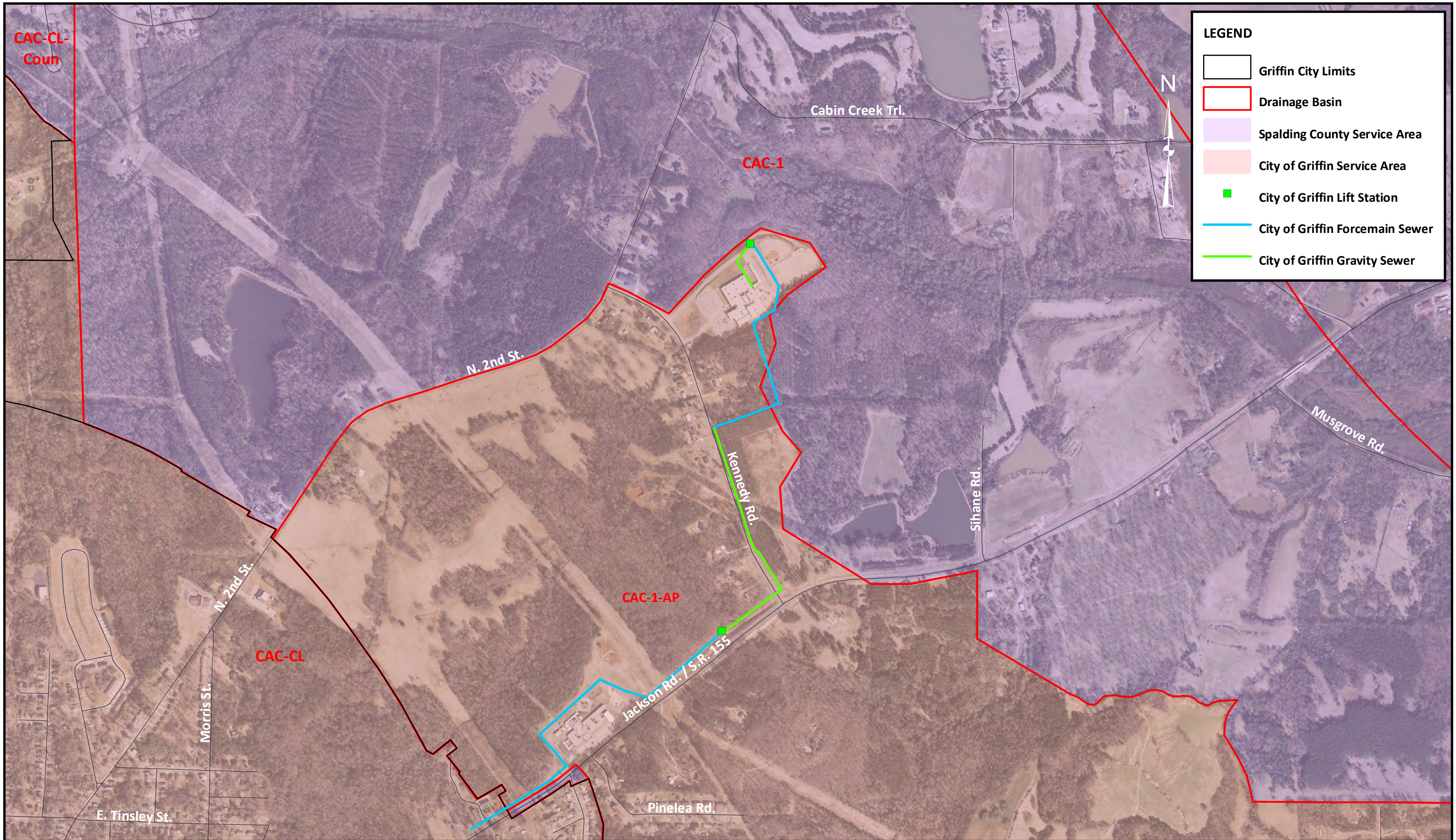
**LEGEND**

- Griffin City Limits
- Drainage Basin
- Spalding County Service Area
- City of Griffin Service Area



City Limits/Drainage Basin  
Common Line



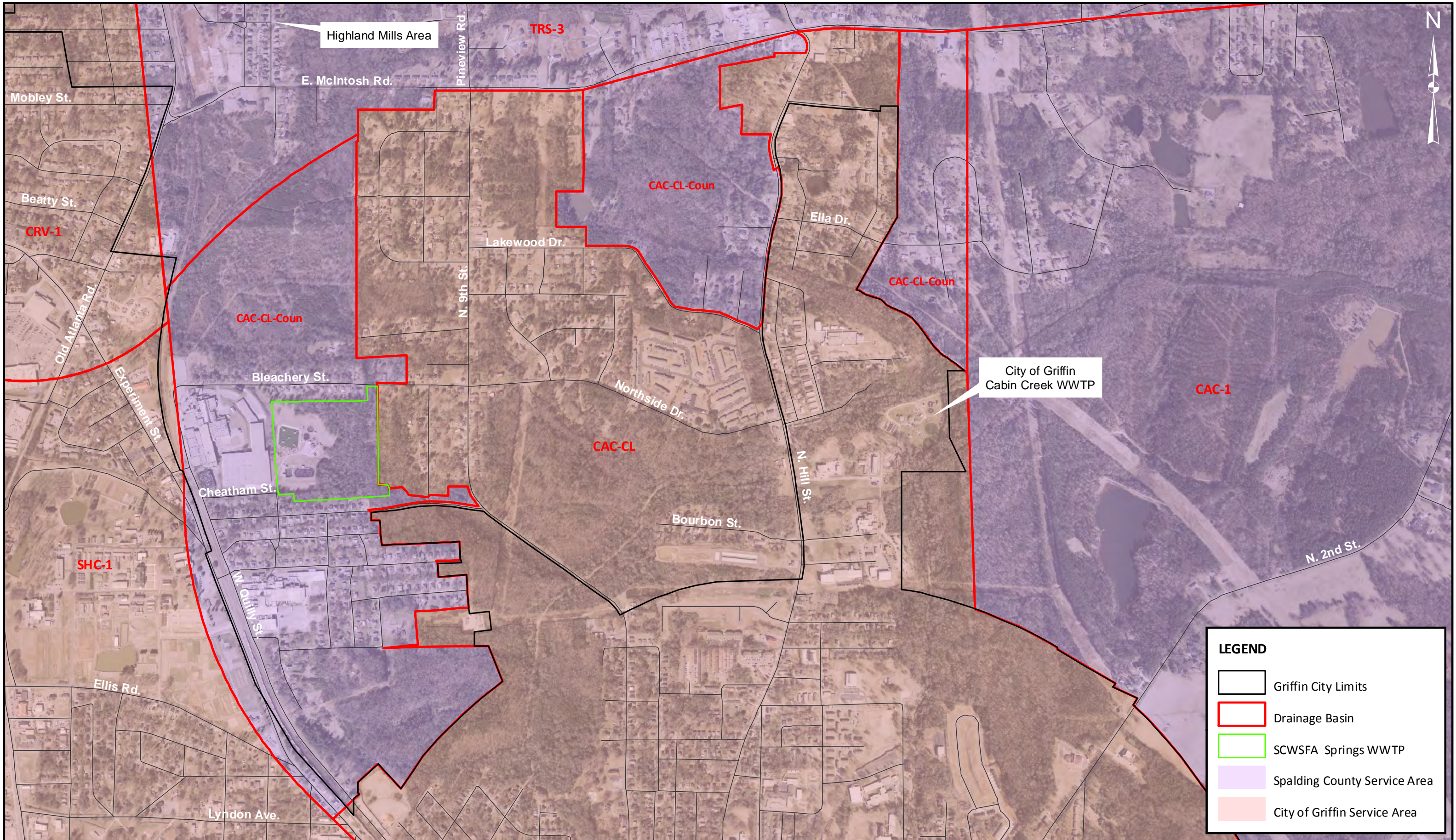


**LEGEND**

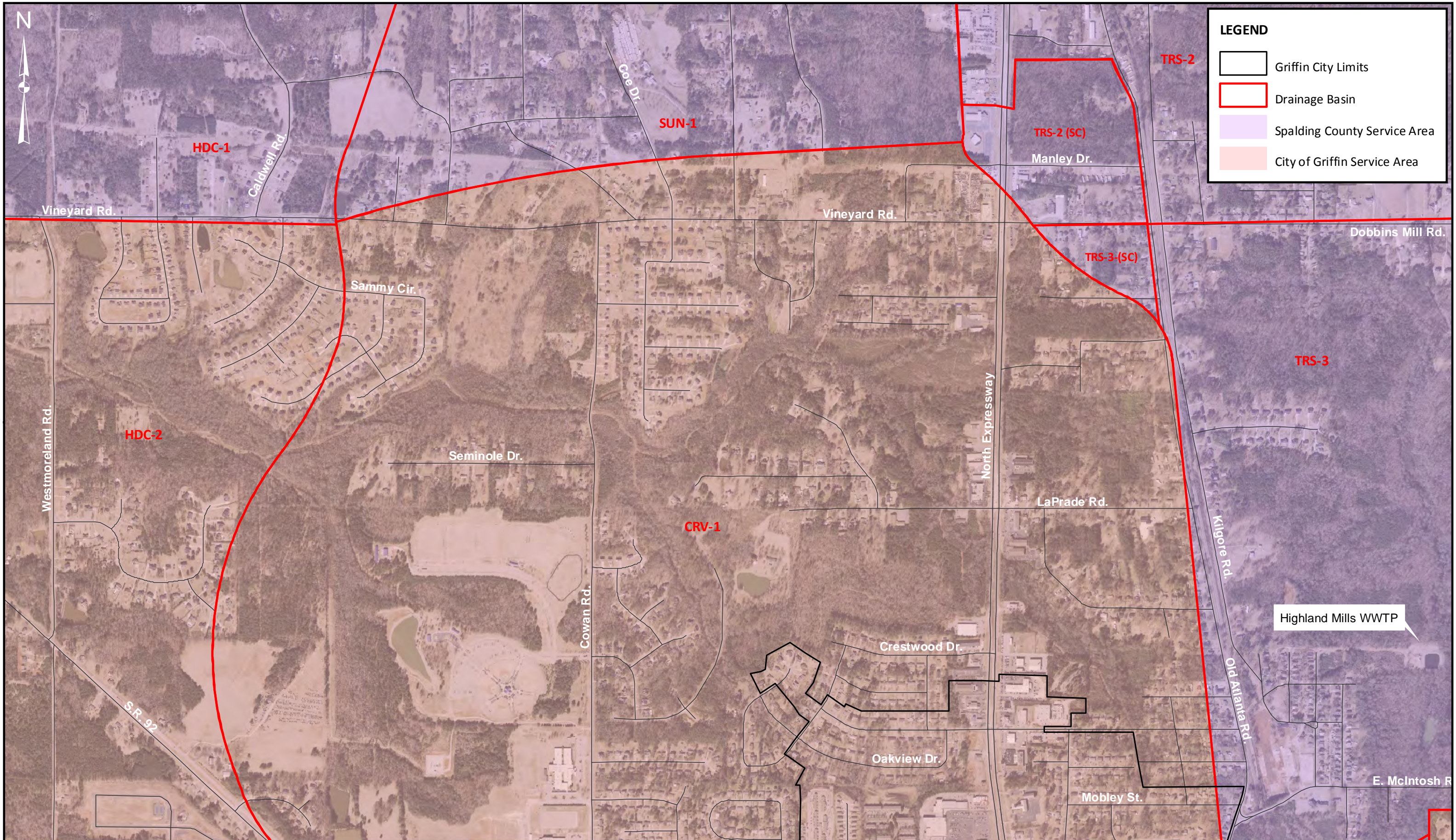
- Griffin City Limits
- Drainage Basin
- Spalding County Service Area
- City of Griffin Service Area
- City of Griffin Lift Station
- City of Griffin Forcemain Sewer
- City of Griffin Gravity Sewer

**GRIFFIN - SPALDING COUNTY SERVICE AREA  
 DRAINAGE BASIN MAP**



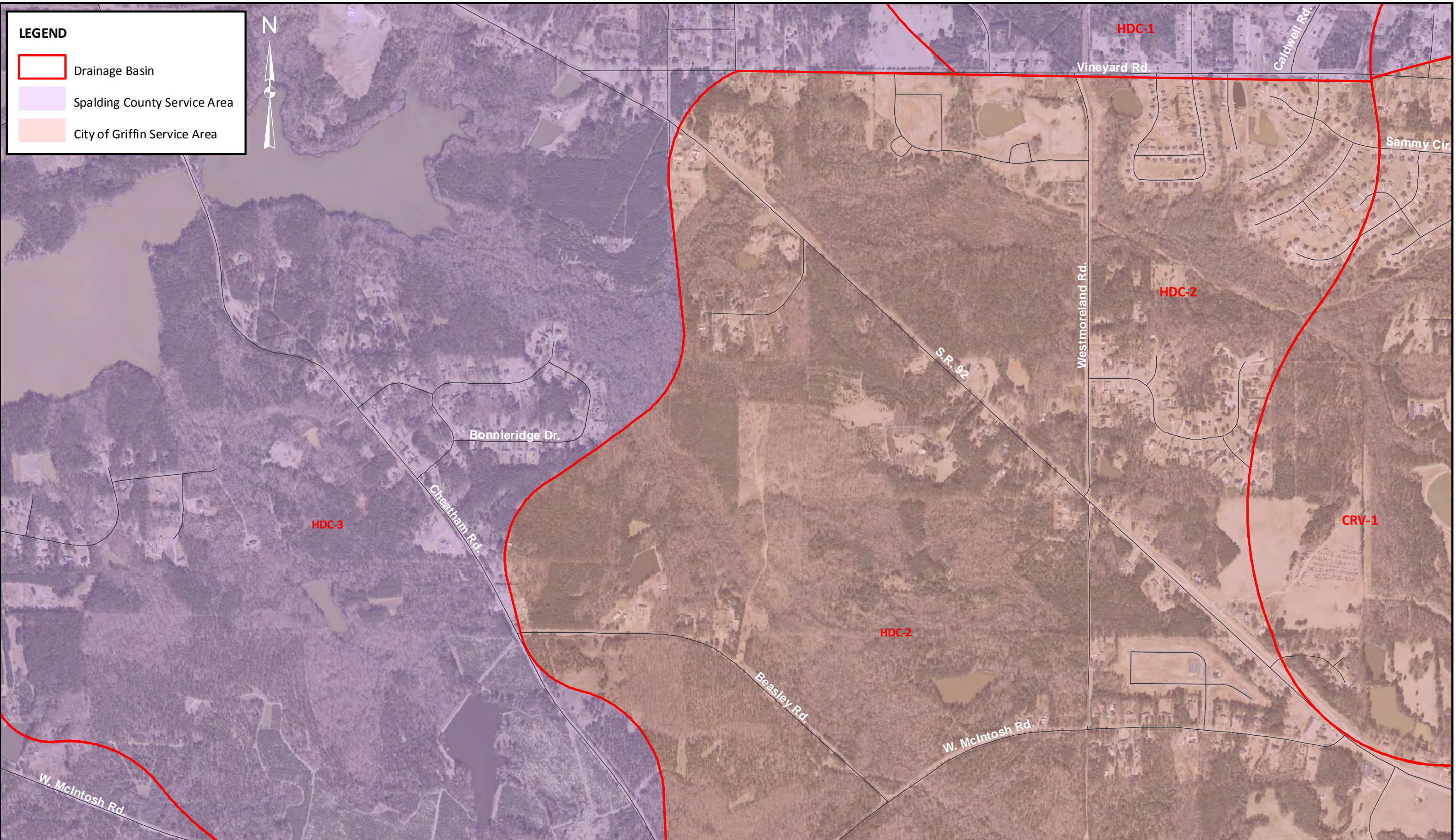




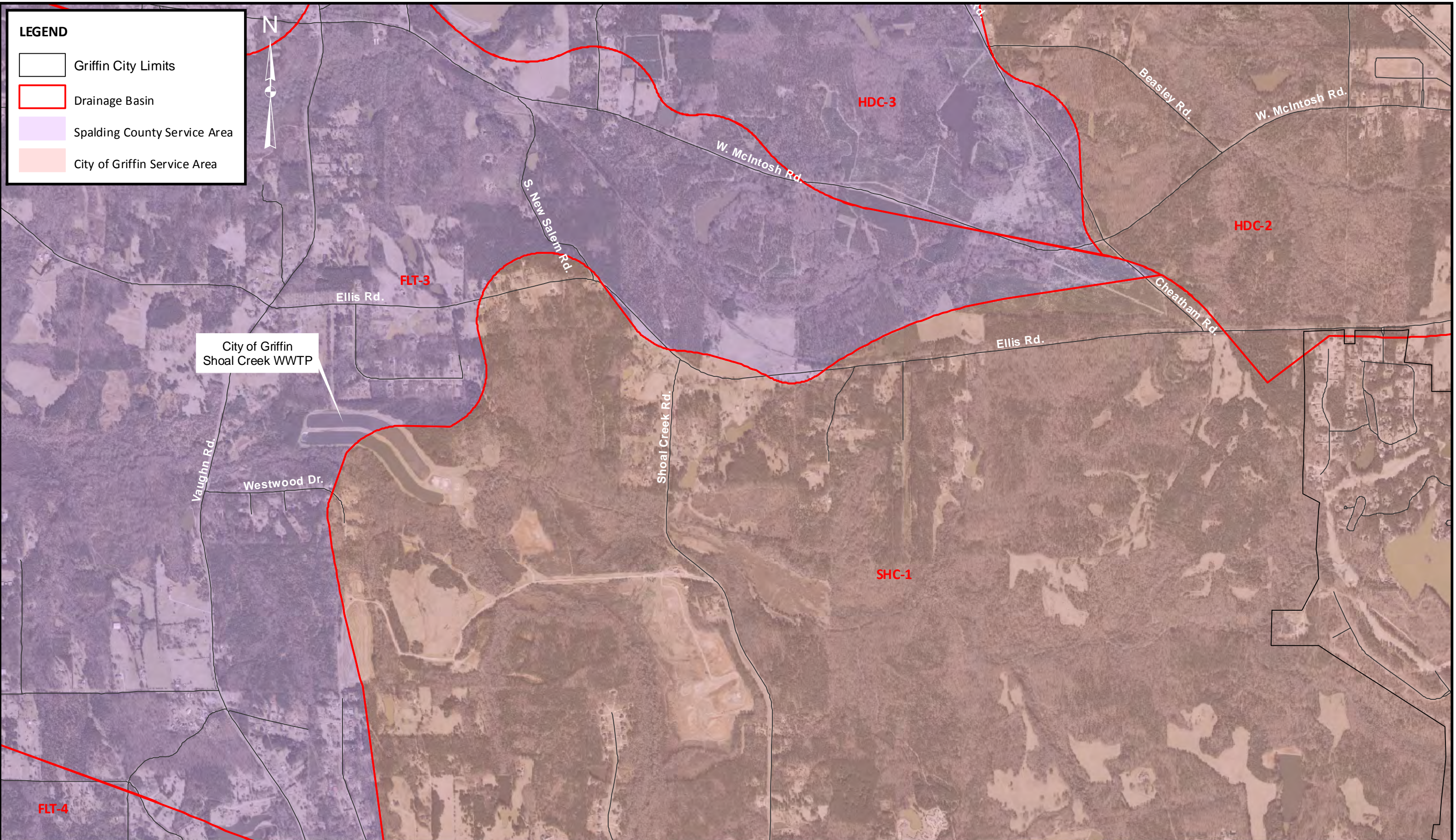


# GRIFFIN - SPALDING COUNTY SERVICE AREA DRAINAGE BASIN MAP

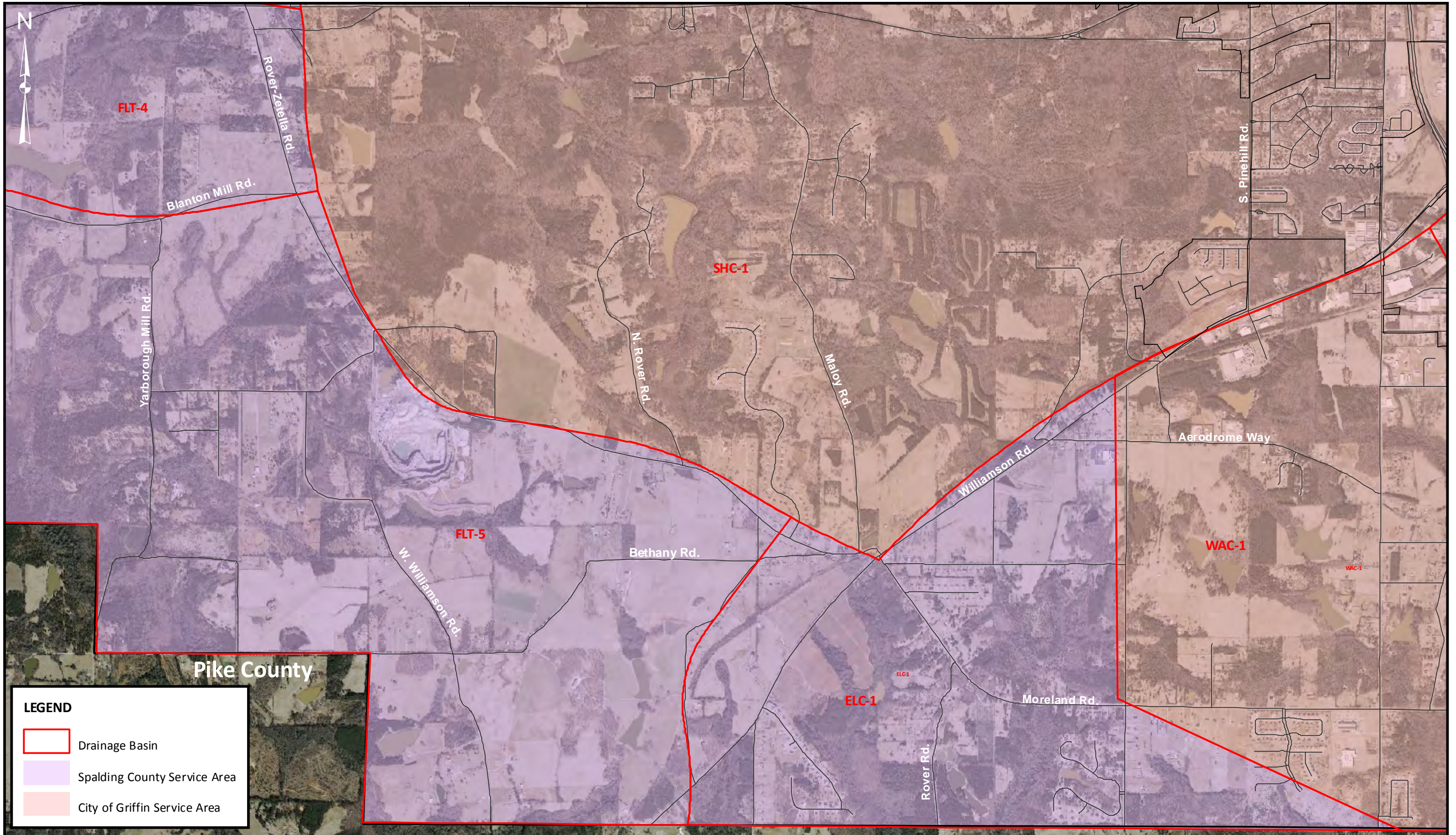












**LEGEND**

- Drainage Basin
- Spalding County Service Area
- City of Griffin Service Area

Pike County

# GRIFFIN - SPALDING COUNTY SERVICE AREA DRAINAGE BASIN MAP