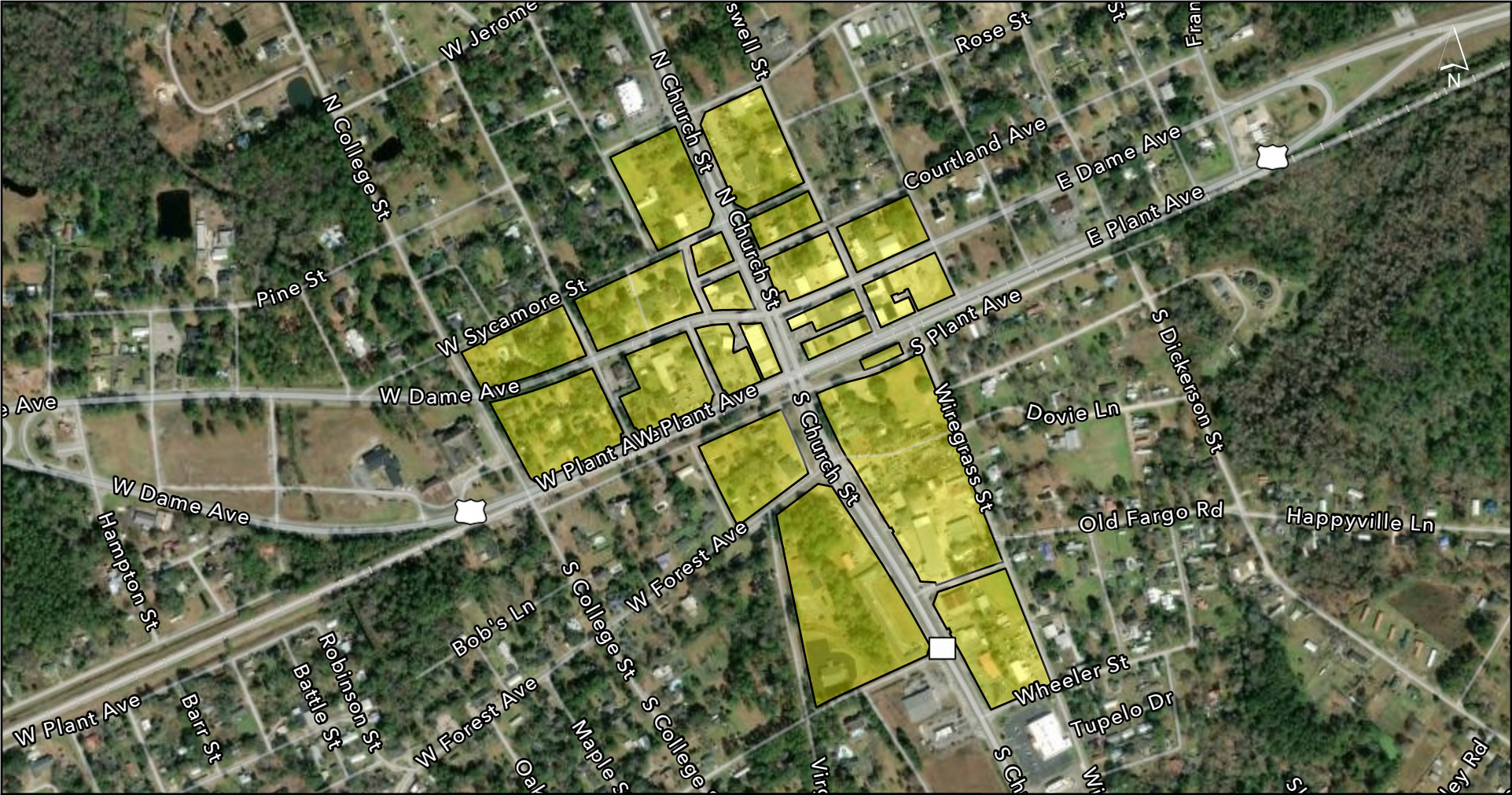
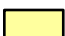



# Official Rural Zone Map for City of Homerville



<div> Approved Rural Zone Parcels</div> <div> <b>GEORGIA DEPARTMENT of COMMUNITY AFFAIRS</b></div>	<div><div>00.250.5 Mi.</div><p>Data Source: Shapefiles from City of Homerville, 2021</p><p>Map Prepared by: Georgia Department of Community Affairs, 2021</p><p>Approved: January 1st, 2022</p><p>Expires: December 31st, 2026</p></div>	<p>It is understood that the data and maps displayed were created from information provided by various government sources at different moments in time and at various levels of accuracy. Further, the data is not a "legal description" and is provided "as is" with no warranty, representation, or guaranty as to the content, accuracy, timeliness, or completeness of any of the information provided herein. It is the responsibility of the user of the data to be aware of the data's limitations and to utilize the data in an appropriate manner.</p> <p>The user knowingly waives any and all claims for damages and under no circumstances shall DCA or its representatives be held responsible for any costs, expenses, damages or injuries, including special or incidental or consequential damages to any person(s) or property that arises from the use of the information provided.</p>
--	--	---