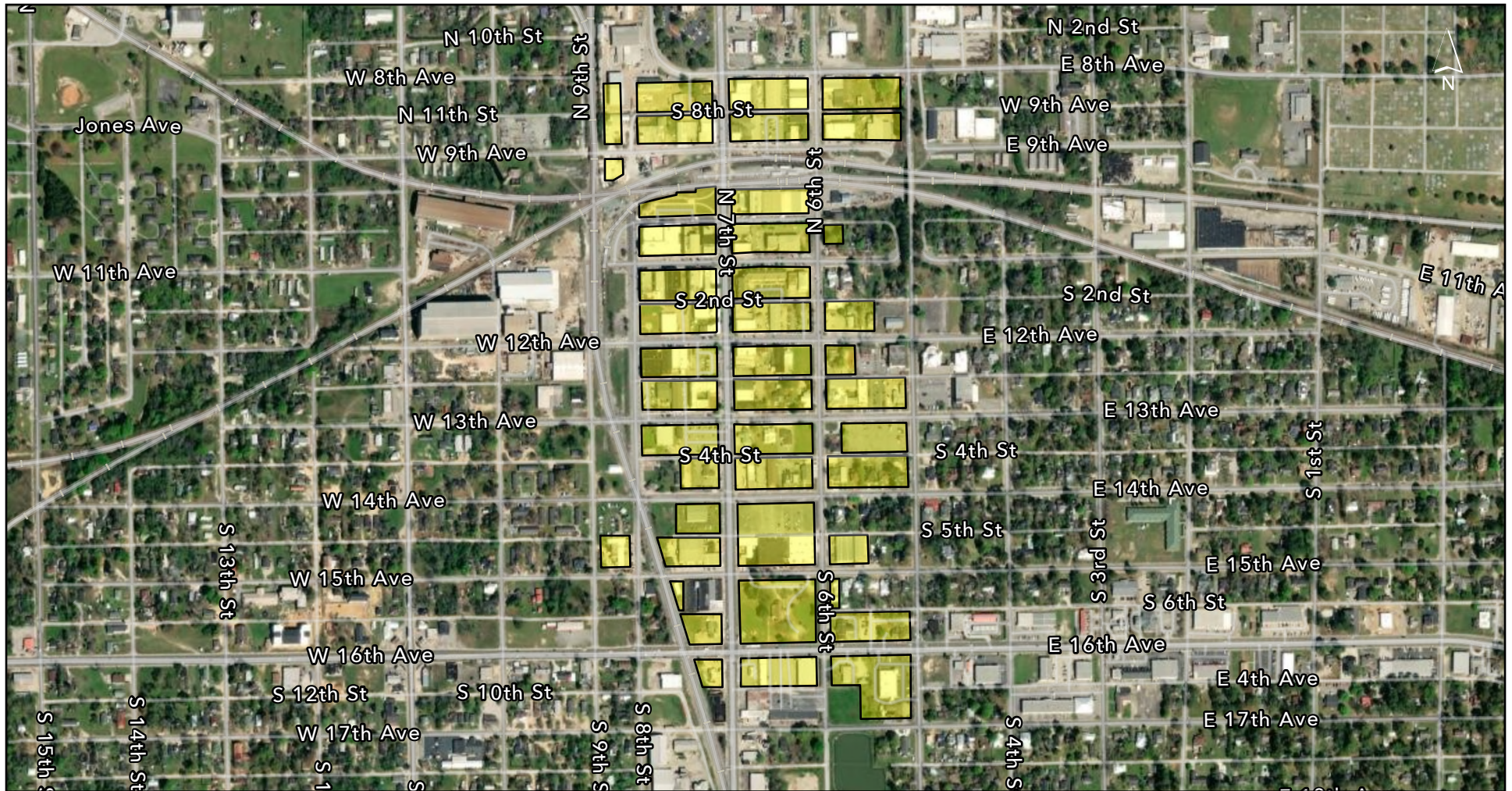


Official Rural Zone Map for City of Cordele



 Approved Rural Zone
Parcels



GEORGIA DEPARTMENT
of COMMUNITY AFFAIRS

0 0.3 0.6 Mi.

Data Source: Shapefiles from City of Cordele, 2021

Map Prepared by: Georgia Department of Community Affairs, 2021

Approved: January 1st, 2022

Expires: December 31st, 2026

It is understood that the data and maps displayed were created from information provided by various government sources at different moments in time and at various levels of accuracy. Further, the data is not a "legal description" and is provided "as is" with no warranty, representation, or guaranty as to the content, accuracy, timeliness, or completeness of any of the information provided herein. It is the responsibility of the user of the data to be aware of the data's limitations and to utilize the data in an appropriate manner.

The user knowingly waives any and all claims for damages and under no circumstances shall DCA or its representatives be held responsible for any costs, expenses, damages or injuries, including special or incidental or consequential damages to any person(s) or property that arises from the use of the information provided.