

**BRASELTON HISTORIC DISTRICT  
ATTRITION STUDY  
TOWN OF BRASELTON, JACKSON COUNTY, GEORGIA  
HP 190719-001  
SAS 2019-00187  
December 22, 2020**

**INTRODUCTION**

During April, May, June and September 2020, R.S. Webb & Associates (RSWA) conducted a resource-by-resource accounting of historic and modern resources and features within the Braselton Historic District (District), a property listed in the National Register of Historic Places (NRHP) on April 27, 2001. This study was stipulated to a Memorandum of Agreement (MOA) executed on January 6, 2020 between the U.S. Army Corps of Engineers, the Georgia State Historic Preservation Office and Braselton Township Development, LLC. The study was designed to mitigate the adverse effects of The Reserve residential development undertaking on the Braselton Historic District and to comply with the National Historic Preservation Act of 1966, as amended [54 U.S.C. 300101 et seq.; especially Sections 106 (54 U.S.C. 306108) and 110 (54 U.S.C. 306101 et seq.)] and its implementing regulation, 36 CFR 800.

The purpose of the attrition study was to: 1) determine the presence/absence of contributing and non-contributing properties within the District as nominated in 2001; 2) assess the current NRHP eligibility status of the 2001 contributing and non-contributing properties, including the status of formerly non-contributing properties that were not 50 years old in 2001; 3) record modern intrusions within the District and their effect on the District; 4) create updated “working” district boundaries that reflect the attrition and addition of historic properties; and 5) develop a Geographic Information System (GIS) layer for the updated “working” district boundaries.

**METHODOLOGY**

The 2001 Braselton Historic District nomination form along with associated maps, photographs, descriptions, and statements of significance for the District were gathered and examined (Pallante *et al.* 2001-Appendix A). The original set of 34 nomination photographs representative of the District (Appendix A: Photos 1-34) were replicated during the current study and comparisons were made between the 1998 and 2020 photography to assess changes within the District that have occurred over the past 22 years (Appendix B: Photos 1-34). The location of each additional building, site, or feature within the original district boundaries, whether determined to be contributing or non-contributing in 2001 or having been constructed or relocated in the interim, was then visited and photographed. These photographs along with a series of contextual views of the current road structure in the Braselton Historic District are included in Appendix C (Photos 35-69).

A 2010 Historic American Buildings Survey (HABS) document for the Braselton Historic District (No. GA-2404) was also reviewed (Lord, Aeck, and Sargent, Inc. 2010). This documentation was carried out upon a finding of an adverse effect to the District and by construction of Broadway Avenue/Lewis Braselton Boulevard through the western part of the District. The HABS study identified and named several historic resources not included in the 2001 NRHP nomination and thought was given to altering the district boundaries. Ultimately it was determined that the proposed undertaking would have no effect on the District’s ability to convey its historical significance.

Per the MOA stipulation, an assessment was made to identify historic resources that may have become eligible for the NHRP since district nomination in 2001, and whether or not formerly non-contributing resources now contribute to the District. To accomplish this, the original historic district resource nomination map (Figure 1) was updated to reflect attrition of contributing and non-contributing elements in the District, and to account for the effects of modern intrusions or more recent historic properties (i.e., 1951 to 1970) present within the original district boundaries (Figure 2). Two significant groups of development-era historic resources within the District were independently assessed for their current collective historic integrity (Figures 3 and 4). Finally, district boundaries were adjusted to reflect the current state of the Braselton Historic District (Figure 5). This document is generally organized into three sections that include: 1) the District and its resources circa 2001; 2) an analysis of attrition within the District; and 3) justification for alteration of district boundaries based on the effects of observed change and attrition.

*Note: Where in the following analysis only a photo number is referenced, a comparison can be made between photographs in Appendix A (1998 nomination photos) and Appendix B (current state of the District). Where a specific appendix and photo number is referenced in the following analysis, that set only includes relevant photographs of the referenced building, site or feature. Table 1 (Appendix D) provides consolidated information and some additional details regarding these historic resources.*

### **COMPOSITION, SIGNIFICANCE, AND DESCRIPTION OF THE BRASELTON HISTORIC DISTRICT (2001)**

*Composition of the Braselton Historic District:* The Braselton Historic District, as nominated in 2001, was composed of 52 contributing and eight non-contributing resources. Each of these district elements are identified in the current documentation as Resource Nos. 1-60 (Figure 1). The contributing resources included 46 historic buildings; five historic sites, and one structure. The buildings included commercial or industrial buildings, high-style and vernacular dwellings, and groups of historic agricultural outbuildings. Sites or landscape features included: three terraced agricultural fields or wooded lots (Resource Nos. 3, 11, and 52); the site of the circa 1920 Braselton High School building (Resource No. 13); and the Braselton Family Cemetery (Resource No. 1). The lone “structure” in the District was defined as “the intact system of roads” (Resource No. 60). Non-contributing resources were those buildings constructed after 1951 and/or those resources that had lost historic material integrity.

*The District’s Historical Significance:* “The Braselton Historic District is an excellent example of a late-19<sup>th</sup> and early-20<sup>th</sup>-century Georgia town founded by a single family and supported on the strength of agricultural production. The historic district is significant in the areas of architecture, landscape architecture, commerce and industry at the state level of significance” (Pallante *et al.* 2001:9). The Braselton Historic District includes “an excellent collection of residential, commercial, and community landmark buildings located in their historic landscaped settings” (Pallante *et al.* 2001:9). The historic district also conveys significance of formal and informal historic landscapes that combined create feeling and historical association with agriculture.

The “landscape of work” is defined as an arrangement of fields, buildings, and pathways on a rural agricultural property that took shape over time and through experiment with emphasis on order,

neatness, and efficiency of labor or functionality. This landscape type is “among the most common and most enduring landscape form[s]” in Georgia (Howett 1991: 1-39). On the scale of the town of Braselton, the historic setting was composed of a series of such landscapes related to agricultural, commercial and industrial work, as it evolved around an irregular crossroad transportation structure (Figure 1). The district nomination photography (1998) shows that the District’s general landscaped setting remained informal and based on functionality in agricultural or other forms of work (Appendix A: Photos 1-34).

*Historic District Description:* The 2001 description of the Braselton Historic District indicates that the District was composed of residential, commercial, community landmark, and agricultural/industrial resources associated with the development of Braselton, encompassing the period 1887 through 1951. Significant dates within this period included 1887, when the first dwelling in the District was known to have been constructed, and 1916, when the town of Braselton was incorporated by the state of Georgia.

The core structure of the Braselton Historic District is located around “an irregularly shaped crossroads... consisting of two T-shaped intersections” (Pallante *et al.* 2001:3-4). The intersections are those of Broadway Avenue (from the west) and Davis Street (from the east), which together constituted State Route (SR) 124 though they were not contiguous, with the north-south oriented SR 53 (the current Green Street/Washington Street - Figure 1). Sub-structural streets located further south included Francis Street, Wall Street (a former rail siding corridor), and Harrison Street (Figure 1).

Historic commercial resources in Braselton are located in two loci east and south of the core structure of the town. One group of brick commercial buildings built during the period 1902 to 1940, is located east of SR 53 between Davis Street and Wall Street. These buildings included attached one-story brick store buildings, a series of cotton compresses or wood-framed warehouses, and a multi-story brick building that served multiple functions (Resource Nos. 39-47). These buildings were built on the site of earlier, wood store buildings in Braselton (Appendix A: Photos 25, 27, and 29). A second concentration of commercial buildings from the development period are located along the west side of SR 53, between Broadway Avenue and Francis Street (Resource Nos. 21-25). These resources include a circa 1925 gas station (Resource No. 25, Photo 14), a circa 1920 front-gabled auto-garage building with two large bay openings (Resource No. 22, no longer present), and the circa 1920 Braselton rolling mill (a type of grist mill) (Resource No. 21, Photo 12).

Historic dwellings, mostly of wood construction, are located throughout the District on the roads radiating from the historic staggered intersection of SR 53 and SR 124. The historic house types represented in the Braselton Historic District included the central hallway, gable ell cottage, Georgian cottage, Queen Anne cottage, and Georgian house. The earliest surviving residence identified in 2001 was constructed in 1887 as a one-room store (Resource No. 34; Appendix A: Photo 24). A similarly designed central-hallway type house, circa 1900, was located on Liberty Church Road (now Jessie Cronin Road) (Resource No. 4; Appendix A: Photo 4). Residential buildings shared equal setbacks, informally landscaped yards with mature trees, foundation plantings, and grass lawns (Appendix A: Photo 33). Some lots also featured low concrete and stone retaining walls/steps and/or agricultural outbuildings and agricultural fields that complement the historic landscaped setting.

Three “high style” historic residences associated with the Braselton family were located within the District. These include the John Braselton House (Resource No. 27, Photo 15), a two-story Georgian-plan house with Colonial Revival-style features built in 1910 by, or for, Braselton family patriarch, William Harrison Braselton. The John Braselton House property landscape, treated independently in the 2001 nomination form as Attachment 1, includes concrete or stone retaining walls, inscribed entranceway piers, large hardwood trees, grass lawn, groups of large and small agricultural outbuildings (Resource Nos. 26 and 28), an iron bell on concrete supports, wooded lots, and agricultural fields [Appendix A: Attachment 1, Figure 3 (a current comparison for Attachment 1), Photos 16-19]. The Green Braselton House (Resource No. 29) is also a two-story Georgian-plan house with Colonial Revival-style features built in 1910 whose site included mature hardwood trees, grass lawn, a circular driveway, and a relatively modest set of outbuildings (Photos 20 and 21). The William Henry Braselton House (Resource No. 18) was built circa 1913 and served in 2001 as Braselton Town Hall. This Georgian-plan house is of Neoclassical Revival style, but “much of [its] historic landscaping has been lost to a parking lot” (Pallante *et al.* 2001:5) (Photo 10). An English Vernacular Revival-style house built circa 1940 (Resource No. 30), north of the Green Braselton House, is the only brick residence considered to be a contributing element of the District (Photo 22). “The majority of the historic residences are one-story wood-framed dwellings featuring few stylistic elements” (Pallante 2001:5), but deference appears to have been given to Resource No. 30’s style and its date of construction.

Community landmark resources include a circa 1920 cotton gin (Resource No. 49, Photo 28), a row of cotton compresses and warehouses located near the gin (Resources Nos. 42-44, Appendix A: Photos 27 and 29), site of the circa 1920 Braselton High School building (Resource No. 13, Photo 7) and a circa 1926 gymnasium building (Resource No. 16, Photo 8). The high school building was destroyed soon after its construction, but its location remains undeveloped and was considered to be a contributor to the District. Furthermore, the spatial relationship of the high school building site to the gymnasium, cafeteria building (not individually numbered) and home economics department (Resource No. 15) located across Harrison Road remained clear in 2001 (Photos 7-9). The Braselton Family Cemetery (Resource No. 1), the only such property within the District, is located in the far northwest corner of the District and was founded in 1929 (Photos 1 and 2).

“The nonhistoric buildings within the district are not large in scale and are primarily located along Georgia SR 53. These buildings along Georgia SR 53 include the Braselton Post Office [Resource No. 33], Northwest Georgia Bank [Resource No. 19], and [a] grocery store [unknown location, not numbered] There has been little modern residential development within the district” (Pallante *et al.* 2001:7). After 20 years, this characterization of the District has changed.

### **ATTRITION OF HISTORIC RESOURCES AND MODERN INTRUSIONS WITHIN THE DISTRICT**

*Current Structure of the Braselton Historic District:* The historic irregularly-shaped crossroads at the historic core of Braselton was bypassed circa 2011 in order to create a conventional crossing of roads further south, aligning the former rail siding (Wall Street) with SR 124 via the historic wooden building commercial area. The new intersection at Davis Street and Broadway Avenue is located approximately 1,200 feet southwest of the historic crossroads (Figure 2). The road system realignment through the middle of the District significantly altered the district structure and resulted directly in the: 1) elimination of one historic commercial building (Resource No. 22), two historic dwellings (Resource Nos. 45 and 50), the loss of one non-contributing resource (Resource No. 51);

and 2) the relocation of Resource No. 48 (current site designated as Resource No. 64). At least one additional historic building that does not appear to have been included in the 2001 district nomination (the Old Jail/Pokey building identified in 2010) was relocated from the site of Resource No. 49 (Cotton Gin) to the location of current Resource No. 63 (Lord, Aeck & Sargent 2010). The altered structure of roads in the District resulted in limited, one-way access to Davis Street (now Centennial Way) at the historic district core and the elimination of access to Broadway Avenue (now Brassie Lane) from SR 53. The modern course of SR 124, though extremely intrusive in terms of a direct effect on certain individual historic resources as well as a cascading indirect effect on overall district setting/feeling/association, was not considered to have a significant effect on the location of historic district boundaries.

The subsequent construction of Broadway Avenue/Lewis Braselton Boulevard through the west section and across the north end of the District resulted directly or indirectly in the loss of six contributing historic dwellings or their sites (Resource Nos. 5-10) and the corruption of one contributing agricultural site (Resource No. 11). Two additional historic structures in this area, Resource Nos. 2 and 4, were located along the west side of the historic course of Liberty Church Road (now Jesse Cronin Road) but are no longer present (Photos 3 and 4). Resource No. 4 (circa 1890) was identified in 2001 as the second-oldest house in the District.

*Other Attrition Within the Braselton Historic District:* Since 2001, losses in the District incidental to new road construction include several commercial warehouse or cotton compress buildings associated with the brick commercial core area (Resource Nos. 42-44) and the loss of a wood-framed building possibly associated with historic Braselton High School. The latter building, a linear form presumed to have been a cafeteria, does not appear to have been originally designated as a contributing resource, but it appeared in 1998 district photography (Appendix A: Photo 9).

*The John Braselton Farm (Resource Nos. 26-28):* Resources located on the John Braselton Farm were treated separately as Attachment 1 of the original district nomination (Appendix A, Figure 3). They included the main house (Resource No. 27), two groups of agricultural outbuildings (Resource Nos. 26 and 28), a tenant house perhaps included as non-contributing resource (Resource No. 12) and associated fields or woods that were not given a resource designation in 2001. A 2017 aerial view of the historic farm property shows that the tenant house and associated woods/fields are no longer connected to the historic farm and are now the site of the Braselton library (Figure 3; Appendix C: Photo 56). However, the agricultural building complex associated with the farm is intact except for the loss of the large barn building at Resource No. 26; the foundation of this building remains as a contributing site or feature (Figure 3).

*Northeast of the District Core (Site of Resource Nos. 31-38):* The area northeast of the intersection of SR 53 and former Davis Street appears to have been important in the support of commercial/agricultural enterprise during the developmental period of Braselton. An aerial photograph attributed to circa 1960 shows that the east side of SR 53, north of the historic core, was lined with buildings. The buildings included a recently constructed ranch dwelling (Resource No. 32) and the Braselton Post Office (Resource No. 33) situated among a series of linear wood-framed storage buildings or barns (Figure 4). Behind (east of) those structures were located: 1) what was reported as the oldest house in Braselton, Resource No. 34, which was a former Braselton Brothers store building converted for residential use; and 2) what may have been the most recently constructed of the

District's vernacular dwellings, Resource No. 35. The 1960 aerial shows an informal system of pathways and historic outbuildings between these two structures. Two additional contributing resources (Resource Nos. 37 and 38) were located in this area located along Davis Street (Centennial Way), facing south to the brick commercial area.

By 2001, all of the wood outbuilding structures lining SR 53 were gone and therefore, were not included in the original historic district nomination. In 2001, the Ranch house, post-office building, and modern bank building were identified as non-contributing resources within the District. Resource No. 34 is no longer present (Photo 24), but an agricultural crib building remains near its site and is in fair condition (Appendix C: Photo 43). Resource No. 35 remains present, but is unoccupied and dilapidated due to neglect (Appendix C: Photo 42). Resource Nos. 37 and 38 are no longer present (Photo 26 and Appendix C: Photo 41).

*Other Modern Intrusions:* The once-contributing historic warehouse/cotton compress buildings located east of the brick commercial area (Resource Nos. 42-44) have been replaced with a community entertainment/ recreation area composed of an amphitheater, a greenspace or lawn, a gazebo, and new maintenance or concession buildings (Figures 4 and 5, Photo 27, Appendix C: Photo 62).

No residential construction has taken place within the original Braselton Historic District boundaries since it was nominated in 2001, and the only contributing brick residence within the District remains the circa 1940 Resource No. 30 (Photo 22). Substantial, multi-story brick structures are now located on both sides of SR 53, south of the modern SR 124 crossroads. These buildings include a parking garage and small communication building located immediately south and east of the commercial cores, built on the historic site of contributing Resource No. 48 (Appendix C: Photos 64 and 65). A police department and municipal court building has been constructed on the historic site of non-contributing Resource No. 20 (Appendix C; Photo 66), and the Northeast Georgia Bank building on the opposite (west) side of the roadway is built on the historic site of contributing Resource No. 17 and non-contributing Resource No. 19 (Appendix C; Photos 61 and 67). The W.H. Braselton House serves currently as Braselton Town Hall and a modern administration building stands behind (east of) this historic house (Photo 10 and Appendix C: Photo 68). The net effect of these modern developments is to isolate the William Henry Braselton House (Resource No. 18) from other development-era features remaining in the District.

*The Rehabilitation of Historic Properties:* The historic rolling mill (Resource No. 21) has received a fresh coat of paint, a modern roof and new windows, but the current use of the structure is unknown (Photo 12). The former course of Broadway Avenue (Brassie Lane) is now a dead end street. On the urban block between Brassie Lane and current SR 124, within the historic wood frame-building commercial loci, is now the relocated circa 1957 telephone building (Resource Location No. 48/64, Appendix C: Photos 46 and 47), a community garden, and rehabilitated historic wooden commercial buildings. Most, but not all, of these buildings were identified as contributing resources in the 2001 historic district nomination. The circa 1925 gas station building (Resource No. 25), a front-gable wood-frame building (Resource No. 24) and an automobile garage (Resource No. 61) have been rehabilitated for current commercial or retail uses (Appendix B: Photo 14). Resource No. 23 appears to either be vacant or to serve an unknown use (Appendix B: Photo 13), while construction of the new highway destroyed or displaced Resource No. 22. This rehabilitated commercial area is now characterized by concrete curbing and sidewalks, brick retaining walls, brick

paver walkways, brick access ramps or stairways, park bench seating, and ornamental planting. The remaining brick commercial buildings (Resources No. 39-41, 46, and 47) are currently in use as an antique store, restaurant, and/or other unknown uses.

The Green Braselton House (Resource No. 29) was converted to commercial use with large west-rear (event space) and north-side (funerary) additions (Figure 4, Photos 20 and 21). Some historic outbuildings remain near the house, but they are painted so as to blend into the modern setting. The historic cotton gin (Resource No. 49), located south of the community greenspace, is currently in use as a brewery. The building's exterior does not appear to have been heavily modified, but the historic wagon access pass-through is paved and the space is enclosed with a knee-high brick wall for use as an outdoor seating area (Photos 28 and 29).

### **REVISED HISTORIC DISTRICT BOUNDARIES**

*Current State of the Historic District:* Structural alteration, resource attrition and the introduction of modern intrusions upon historic parcels in the Braselton Historic District has resulted in: 1) the loss of 23 of 46 contributing historic buildings; 2) the loss of four of eight non-contributing buildings; 3) a significant reduction of integrity in one of five contributing sites within the District (Resource No. 11); 4) the loss of continuity with two additional contributing sites (Resource Nos. 1 and 3); 5) a significant reduction in the historic integrity of property surrounding the W. H. Braselton House (Resource No. 18); 6) discontinuation of the general use of the historic irregular transportation structure (Resource No. 60); and 7) the physical relocation of at least one contributing historic resource (Figure 2).

Because of current conditions within and around the original District the Braselton Family Cemetery (Resource No. 1) and the W.H. Braselton House (Resource No. 18) are now isolated from intact portions of the District. Though still individually-eligible for the NRHP, these two major historic properties are no longer part of the contiguous historic district and no longer appear to directly contribute to the District (Figure 5). Resource No. 3, a contributing wooded or agricultural site and the former location of several contributing vernacular dwellings, is also now isolated from existing District properties and the land carries no known individual historic significance. The circa 1920 cotton gin is essentially also an isolated resource, but proximity to the brick commercial building area and the historic Wall Street corridor serves to maintain continuity with the District.

The now-wooded area located northeast of the District core, between formerly non-contributing Resource Nos. 32, 33, and 36, and the one remaining contributing agricultural site, Resource No. 52, is very near being devoid of its four historic dwellings, landscape and historic agricultural buildings (Resource Nos. 34, 35, 37, and 38). Only Resource No. 35 still stands in this area, along with a single agricultural outbuilding perhaps historically associated with now-destroyed Resource No. 34 (Appendix C: Photos 42 and 43). The historic dwelling Resource No. 35 is unoccupied; both the dwelling and the outbuilding are in a state of extreme disrepair due to neglect. While integral elements of location, design, materials, and workmanship remain present in these buildings to varying degrees, the elements of setting, feeling and association with development-era Braselton appear to be lost. Outside of an unknown archeological component or some unrecognized symbolic significance of this area, the overall site appears to no longer contribute to the interpretation of architecture or landscape design associated with the development of Braselton during the period 1887 to 1951. This area is, therefore, excluded from revised historic district boundaries.

In 2020, the radiation of historic vernacular dwellings from the historic core of the District no longer extends to the west and south, and few such structures are present to the east. In addition, the northern reaches of the District and its landscape are now restricted by the modern Broadway Avenue/Lewis Braselton Boulevard corridor. District attrition and modernization has led to the parceling-off of some land west of, and historically associated with, the John Braselton and Green Braselton properties (compare Figures 2 and 5). This land now carries potential for future development along Broadway Avenue/Lewis Braselton Boulevard. Likewise, land formerly associated with tenancy and agricultural practice on the John Braselton Farm (Figure 3) is now a separate legal parcel and the current site of the Braselton Library. On this basis, former agricultural land now located west of Resource Nos. 26-30 is not included within the updated historic district boundaries. Elements of historic agricultural landscape architecture remain present only within the current John Braselton House property (Resource Nos. 26-28), within the Evans property (Resource Nos. 52 and 53), and among the vernacular dwellings area located east of the District core.

*Relocated or Subsequently Identified Resources:* The 1957 Telephone Exchange building (Resource No. 48/64) and the Old Jail/Pokey building (Resource No. 63) were moved to their current site from elsewhere within the District. Resource No. 48/64 was considered to be contributing at its original location and district resource consolidation is deemed for this exercise to be preferable to outright destruction of the historic resource. The original district map shows a small, square outparcel located between the former Broadway Avenue and Francis Street (Appendix A), setting up the possibility that the Old Jail/Pokey building (Resource No. 63) could have been returned from near the Cotton Gin (Resource No. 49), where it was identified in 2010, to near its historic location within the wood commercial area. The “Auto Garage” (Resource No. 61), also identified in 2010, appears to have been exposed by construction of the new Georgia SR 124 and it may, therefore, remain in its historic location. Resource No. 62 was not given a designation in the original historic district nomination, but it did appear in 2001 district photography at its current location (Photo 12 and Appendix C: Photo 50).

*Historic District Boundary Expansion:* The proposed district boundaries have been expanded from the original 2001 boundaries in the extreme northeastern part of the District (Figures 1, 2, and 5). Here, there appears to be have been some confusion in the original district mapping with regard to the location of Resource No. 58. According to the 1998 district photography, aerial photographs and county tax parcel information, there was a building located between Resource No. 57 and the location of Resource No. 58. The parcel for the building in between appears to have been cut from the historic parcel associated with Resource No. 58, the building for which is still present. Therefore, the district boundary was expanded to the northeast to include all of the tract of land associated with the building depicted in Photo No. 34 (Resource No. 58). The building in between was neither photographed nor assigned a resource number in 2001 and it is no longer present.

*Revised “Working” Braselton Historic District Boundaries:* The revised “working” boundaries for the Braselton Historic District are illustrated in Figure 5. The remnant contiguous District is now composed of 25 contributing buildings, one non-contributing building, three agricultural or community landmark sites, and remnants of the lone historic district road structure. Historic buildings within the proposed working boundaries include: 1) rehabilitated and/or relocated brick and wooded commercial buildings at the core of the District (Resource Nos. 21, 23-25, 39-41, 46, 47, and 61-64); 2) the circa-1920 cotton gin (Resource No. 49); 3) dwellings and outbuildings

located along the west side of SR 53, north of the District core (Resource Nos. 27-30); 4) structures associated with historic Braselton High School (Resource Nos. 15 and 16) southwest of the core; and 5) development-era vernacular dwellings located along Davis Street, east of the commercial core (Nos. 53, 55, and 57-59). The only building that does not contribute to the District as defined in 2001 is the circa-1960 Ranch house located on Davis Street, east of the District core (Resource No. 56). Contributing sites include the former site of Braselton High School (Resource No. 13), the Evans' terraced farmland/pasture (Resource No. 53) and the former site of a large barn located on the John Braselton place (Resource No. 26) (Figure 5).

The intersection of former Broadway Avenue (Brassie Lane-west) and former Davis Street (Centennial Way-east) with SR 53 (Resource No. 60) remains in a compromised configuration as the lone contributing structure in the District. The truncated Harrison Street corridor, the Francis Street corridor with no access to SR 53, and the former Wall Street that lies partially beneath the current SR 124/Davis Street corridor are also considered to be contributors to the historic structure of the District (Resource No. 60) (Figure 5).

Modern intrusions within the working district boundaries include community amenities at the former site of Resource Nos. 42-44, the realignment of SR 124/Davis Street, and modern buildings located on the historic Green Braselton House property (Resource No. 29) (Figure 5).

## CONCLUSION

Historic high-style and vernacular architecture, commercial brick and commercial wooden architecture, an early 20<sup>th</sup> century educational complex, and an historically-limited amount of industrial architecture remain present within the Braselton Historic District as established in 2001. The historic architecture that remains continues to convey a sense or feeling of history in the community, with varying degrees of the integral elements of location, design, material, and workmanship present among the buildings located within the revised district boundaries.

Historic architecture alone, however, cannot convey feeling and association with agriculture or other historic work in the development period 1887-1951 around the Braselton crossroads. The overall setting of the Braselton Historic District has largely been transformed from a late-19<sup>th</sup>/early-20<sup>th</sup> century conglomerated landscape of agricultural and other work into a late-20<sup>th</sup>/early-21<sup>st</sup> century suburban landscape of disparate commercial retail/service and governmental work, characterized by independent beatification features imposed upon the landscape. The once-pervasive agricultural landscapes of Braselton that were developed through long-term experimentation or usage are now restricted almost exclusively to the area near the John Braselton house and along the former course of Davis Road, east of the commercial core of the District.

## REFERENCES

Howett, C.

- 1991 "Historic Residential Landscapes in Georgia." Extracted from: *Georgia's Living Places: Historic Houses in their Landscaped Settings*. Online Document. Found at: <https://georgiashpo.org/historiclandscapes>. Historic Preservation Division, Georgia Department of Natural Resources. Atlanta, Georgia.

Lord, Aeck, and Sargent, Inc.

*2010 Braselton National Historic District Popular Documentation Report, Historic American Building Survey(HABS) No. GA-2404. Lord, Aeck, and Sargent, Inc. Atlanta, Georgia.*

Pallante, A., B. Lonee and H.S. Walker, Jr.

*2001 National Register of Historic Places Nomination From: Braselton Historic District. Historic Preservation Division, Georgia Department of Natural Resources. Atlanta, Georgia.*

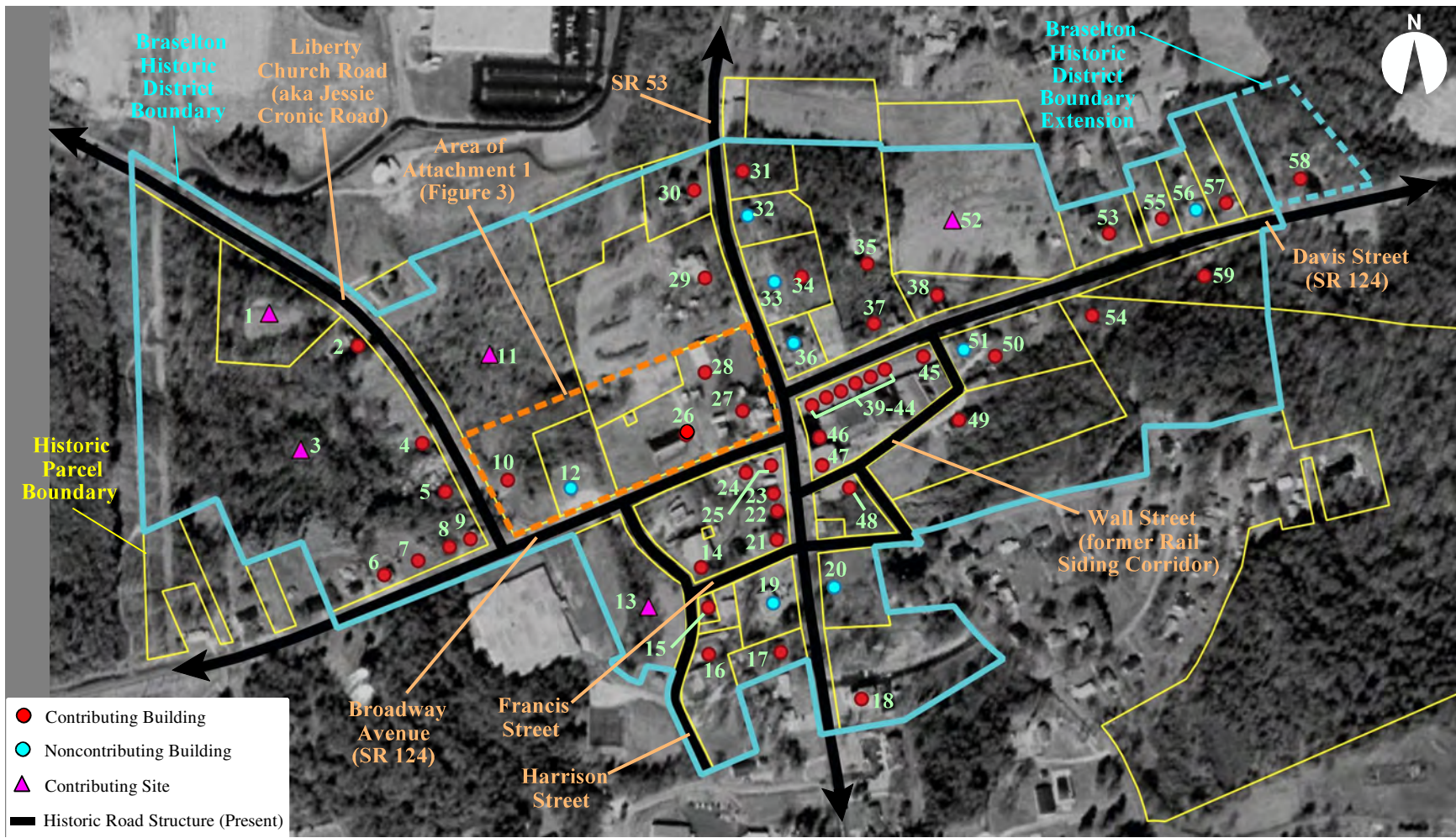
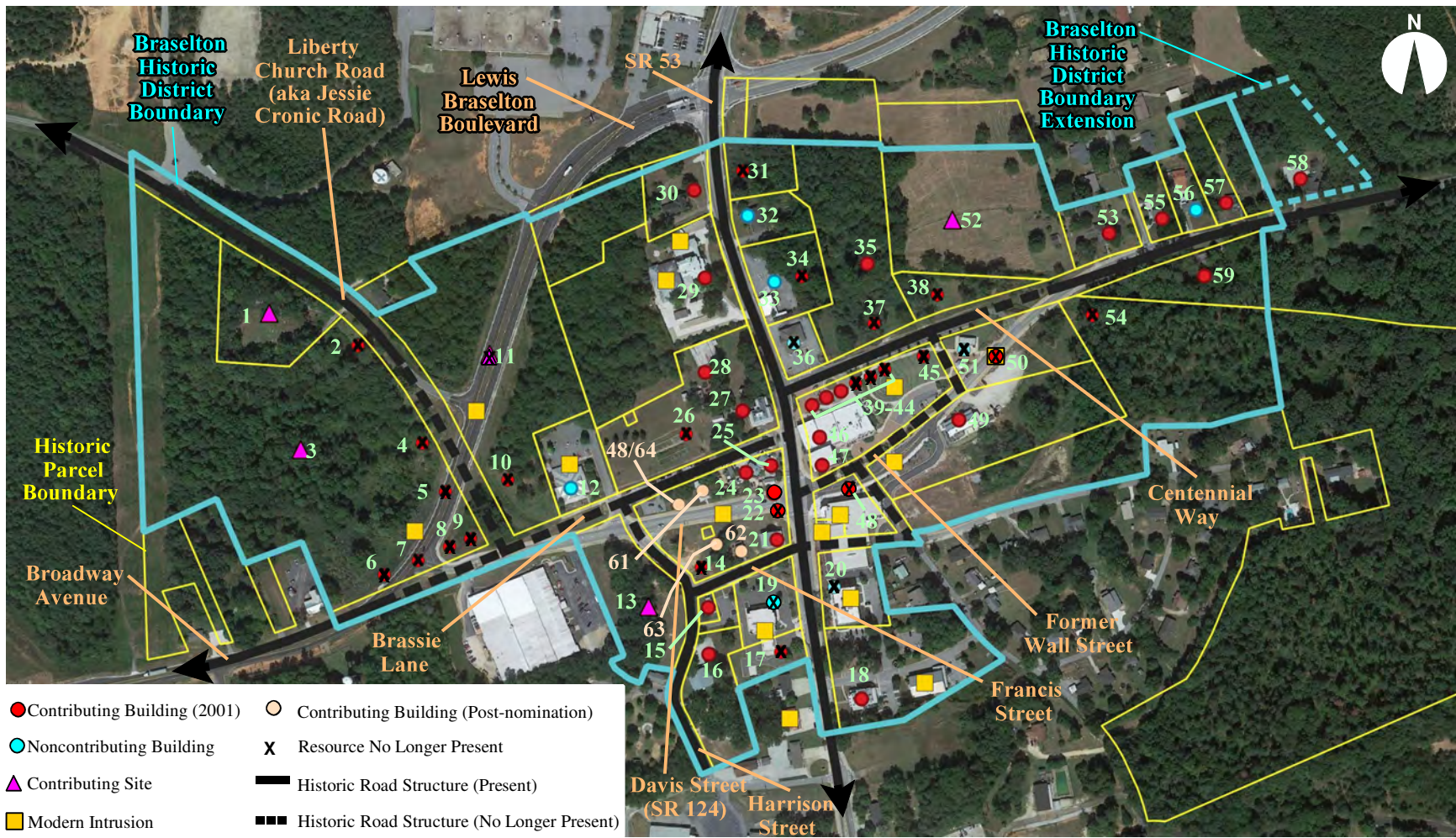


Figure 1 1999 Aerial Photography Showing 2001 District Boundaries, Historic Parcel Data, and Nominated Historic Resource Locations



- Contributing Building (2001)
- Contributing Building (Post-nomination)
- Noncontributing Building
- △ Contributing Site
- Modern Intrusion
- ⊗ Resource No Longer Present
- Historic Road Structure (Present)
- - - Historic Road Structure (No Longer Present)

Map Reference: Google Earth (2017)

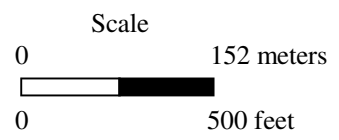
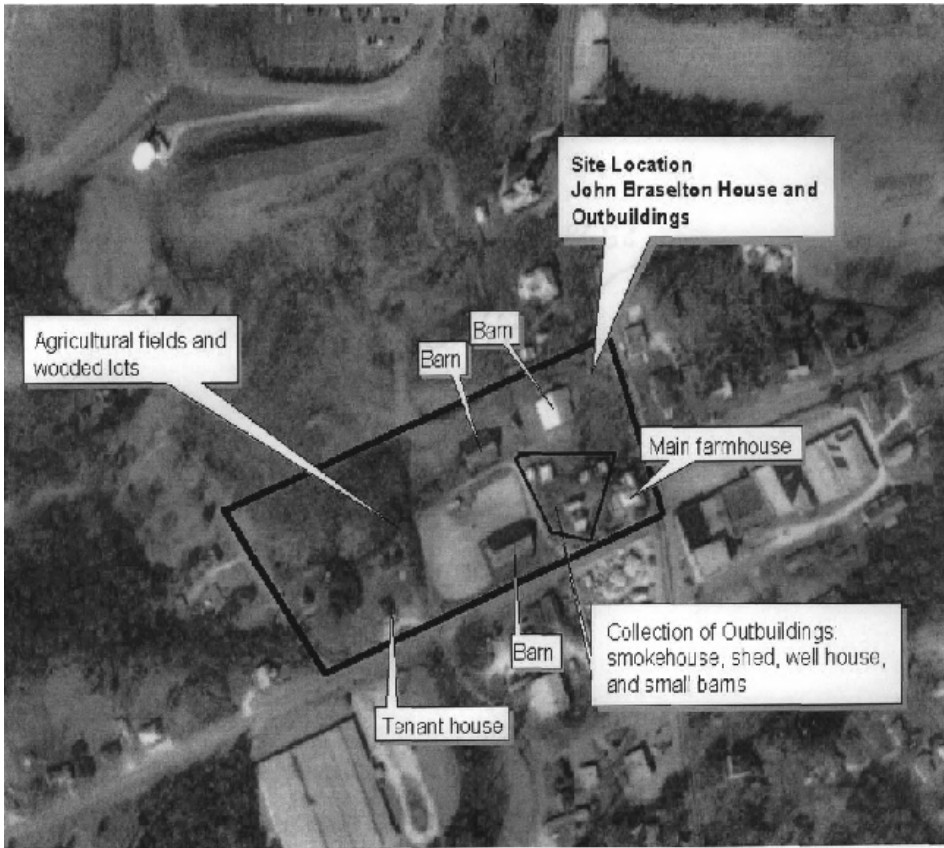
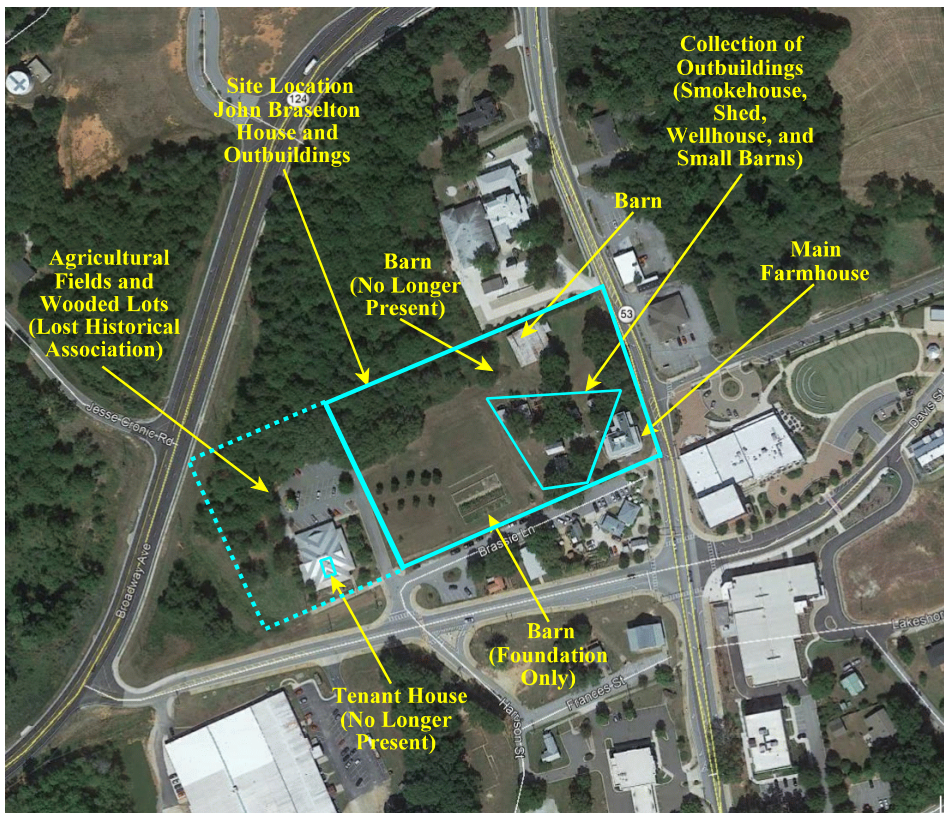


Figure 2 2017 Google Earth Aerial Photography Showing Nominated District Boundaries, Historic Parcel Data, and Attrition to Nominated Historic Resources



2001 District  
Nomination 1

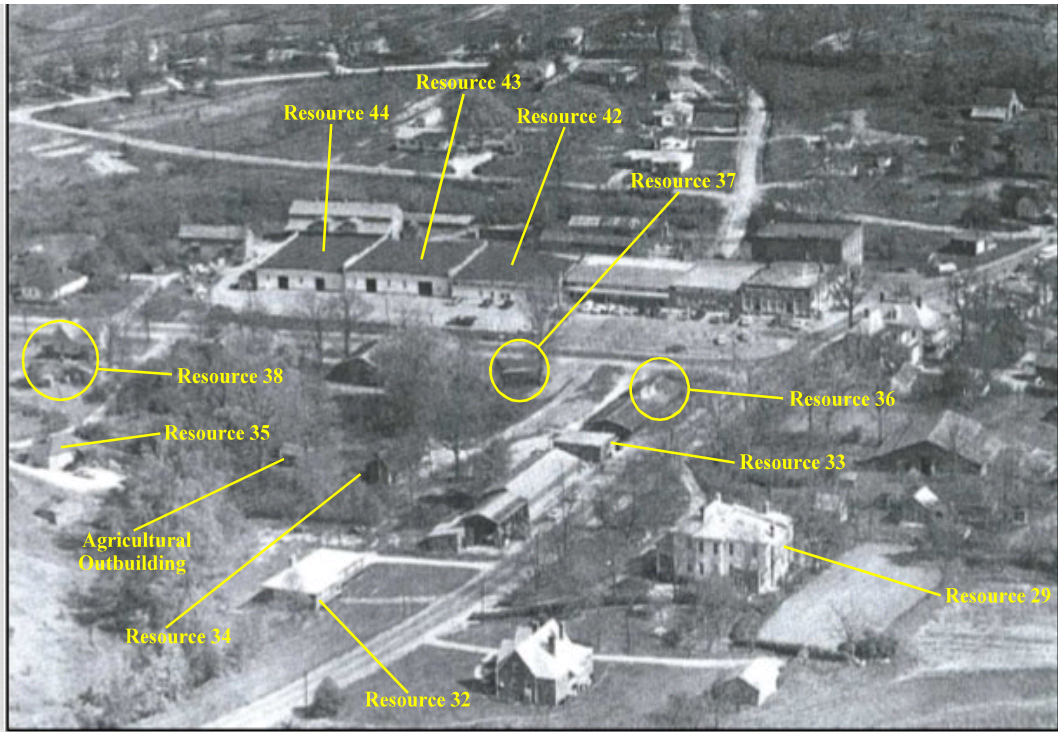
0 133 meters  
0 435 feet



2017 Aerial View of John  
Braselton Farm

0 113 meters  
0 370 feet

Figure 3 Attachment 1 Showing Resources in the Area of Nomination, The John Braselton Farm

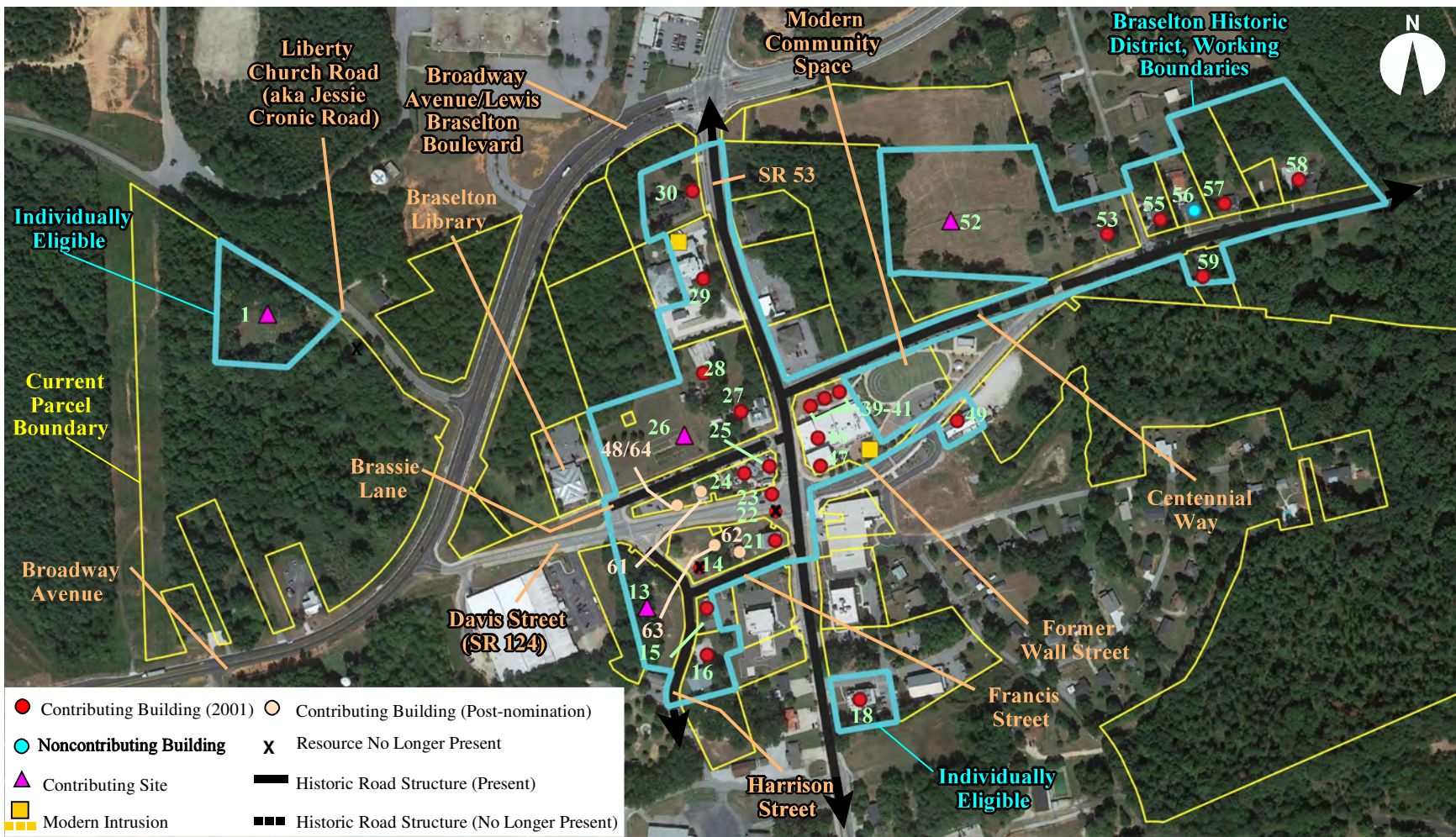


Circa 1960s Aerial Photograph



2017 Google Earth Aerial Photograph

Figure 4 Showing Resources Located Northeast of Commercial Core



Map Reference: Google Earth (2017)

Figure 5 2017 Google Earth Aerial Photography Showing Current Parcel Boundaries, Proposed Historic District Amendment, Modern Intrusions and Historic Resource Locations

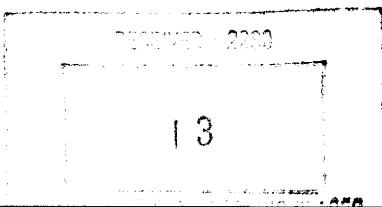


**APPENDIX A - 2001 DISTRICT NOMINATION FORM AND NOMINATION  
PHOTOGRAPHY (PHOTOS 1-34)**



United States Department of the Interior

National Park Service



384

# NATIONAL REGISTER OF HISTORIC PLACES REGISTRATION FORM

This form is for use in nominating or requesting determinations of eligibility for individual properties or districts. See instructions in "Guidelines for Completing National Register Forms" (National Register Bulletin 16). Complete each item by marking "x" in the appropriate box or by entering the requested information. If an item does not apply to the property being documented, enter "N/A" for "not applicable." For functions, styles, materials, and areas of significance, enter only the categories and subcategories listed in the instructions. For additional space use continuation sheets (Form 10-900a). Type all entries.

## 1. Name of Property

historic name Braselton Historic District

other names/site number/n/a

## 2. Location

street & number Main intersection of Georgia State Route 124 and Georgia State Route 53.  
city, town Braselton (n/a) vicinity of  
county Jackson code GA 157  
state Georgia code GA zip code 30605

(n/a) not for publication

## 3. Classification

### Ownership of Property:

- private
- public-local
- public-state
- public-federal

### Category of Property:

- building(s)
- district
- site
- structure
- object

### Number of Resources within Property:

	<u>Contributing</u>	<u>Noncontributing</u>
buildings	46	8
sites	5	0
structures	1	0
objects	0	0
total	52	8

Contributing resources previously listed in the National Register: n/a

Name of previous listing: n/a

Name of related multiple property listing: n/a

**4. State/Federal Agency Certification**

As the designated authority under the National Historic Preservation Act of 1966, as amended, I hereby certify that this nomination meets the documentation standards for registering properties in the National Register of Historic Places and meets the procedural and professional requirements set forth in 36 CFR Part 60. In my opinion, the property meets the National Register criteria. ( ) See continuation sheet.

*Richard Coates*  
Signature of certifying official

*3-8-01*  
Date

*for* W. Ray Luce  
Deputy State Historic Preservation Officer

In my opinion, the property ( ) meets ( ) does not meet the National Register criteria. ( ) See continuation sheet.

\_\_\_\_\_  
Signature of commenting or other official

\_\_\_\_\_  
Date

\_\_\_\_\_  
State or Federal agency or bureau

**5. National Park Service Certification**

I, hereby, certify that this property is:

entered in the National Register

*Patrick Andrews* *4/27/01*  
\_\_\_\_\_  
\_\_\_\_\_

determined eligible for the National Register

determined not eligible for the National Register

removed from the National Register

other, explain:

see continuation sheet

\_\_\_\_\_  
Keeper of the National Register

\_\_\_\_\_  
Date

---

## 6. Function or Use

---

### Historic Functions:

DOMESTIC/single dwelling  
COMMERCE/business  
COMMERCE/professional  
COMMERCE/specialty store  
GOVERNMENT/post office  
FUNERARY/cemetery  
RECREATION AND CULTURE/sports facility  
AGRICULTURE/storage  
AGRICULTURE/agricultural field  
INDUSTRY/manufacturing facility  
TRANSPORTATION/road-related

### Current Functions:

DOMESTIC/single dwelling  
COMMERCIAL/business  
COMMERCIAL/professional  
COMMERCIAL/specialty store  
FUNERARY/cemetery  
RECREATION AND CULTURE/sports facility  
AGRICULTURE/agricultural field  
TRANSPORTATION/road-related

---

## 7. Description

---

### Architectural Classification:

LATE 19TH AND 20TH CENTURY REVIVALS/Colonial Revival  
LATE 19TH AND 20TH CENTURY REVIVALS/Neoclassical Revival  
LATE 19TH AND 20TH CENTURY REVIVALS/Tudor Revival/English Vernacular Revival  
LATE 19TH AND EARLY 20TH CENTURY AMERICAN MOVEMENTS/Craftsman

### Materials:

**foundation** brick, stone, concrete  
**walls** wood, brick  
**roof** metal, asphalt  
**other** n/a

### Description of present and historic physical appearance:

The Braselton Historic District includes a large portion of the small town of Braselton, located in northeast Georgia. The historic district encompasses the historic residential, commercial, community landmark, and agricultural/industrial resources associated with the development of Braselton. The core of the town is centered around an irregularly shaped crossroads intersection, Georgia State

United States Department of the Interior  
National Park Service

## National Register of Historic Places Continuation Sheet

### Section 7--Description

---

Route (SR) 53 at Georgia SR 124, consisting of two T-shaped intersections. The Gainesville Midland Railroad (a section of the Central of Georgia Railroad) was originally located along Georgia SR 53 with a spur (siding) located along Wall Street. The line was abandoned and the railroad tracks removed in 1947.

The historic commercial resources are located near the core of the town. The commercial resources are oriented towards Georgia SR 124/Davis Street with the abandoned railroad corridor located behind the buildings. The historic commercial resources consist of attached one-story brick buildings with bands of windows and stepped-parapet roofs and free-standing one-story wood-framed buildings. The collection of historic commercial resources along Georgia SR 124/Davis Street was constructed 1902 to 1940s and is associated with the foundation family, the Braselton family. Prior to the construction of these buildings, wood-framed stores built by the Braselton family were located on the same site. The attached brick buildings feature large display windows with transoms, recessed main entrances, parapet roofs, terra-cotta coping, and historic signage (see photo 25). Also located within this group of attached buildings are cotton compresses and warehouses. These buildings feature low hipped roofs, brick fire walls, and large bay entrances (see photos 27 and 29).

A second concentration of commercial buildings, built during the early 1900s, is located on the southwestern corner of Georgia SR 53/Washington Street at Georgia SR 124/Broadway Avenue. A 1925 gas station oriented towards the intersection is the only historic gas station remaining in the town. The building features a low-hipped roof, overhanging eaves, a canopy, and three-bay central block (see photo 14). Located directly behind (southeast) the gas station is a c.1920 front-gable building with two large bay openings; the building historically functioned and continues to function as an auto garage. The Braselton rolling mill (a type of grist mill), one of the largest buildings within the district, is located within this row of commercial buildings at the northwest corner of the intersection of Georgia SR 53/Washington Street and Frances Street. The Braselton rolling mill was constructed c.1900 and features two-and-a-half-story height, side-gable metal roof, weatherboard exterior cladding, and one-bay side additions (see photo 12).

The historic dwellings are located on the roads radiating from the main intersection of Georgia SR 53 at Georgia SR 124. The historic residences consist of dwellings constructed from the late 19th century into the early 20th century. The architectural types represented within the National Register district include central hallway, gable ell cottage, Georgian cottage, Queen Anne cottage, and Georgian house. These architectural types are located throughout the district. The historic residences share equal setbacks and feature informally landscaped yards with mature trees, foundation planting, and grass lawns (see photo 33). Low concrete and stone retaining walls and steps are included within a few of the landscaped yards (see photo 34 and 32). A few of the historic residences include outbuildings and agricultural fields.

Three large historic residences associated with the Braselton family, the founding family, remain within the district. The John Braselton House, built 1910, is located on the northwest corner of the

United States Department of the Interior  
National Park Service

## National Register of Historic Places Continuation Sheet

### Section 7--Description

---

intersection of Georgia SR 53 at Georgia SR 124 (photo 15). The two-story Georgian-plan house built in the Colonial Revival style features a truncated hipped roof with dormer, interior chimneys, one- and two-story wrap-around porch featuring dentils and supported by columns with Ionic capitals, machine-turned balustrade, one-over-one double-hung windows, and main and side entrances with fanlights and sidelights. A two-story ell was added to the rear of the residence during the historic period. The landscape of the John Braselton House consists of concrete and stone retaining walls, stone piers with inscriptions marking the main drive to the house, large hardwood trees, and grass lawn with foundation plantings located near the house. Agricultural outbuildings and agricultural fields are located to the west of the house. These buildings including two large transverse barns, smokehouse, a tenant house, and sheds (see photos 16-19). A historic bell supported by concrete columns is also located near the outbuildings. The agricultural fields are located behind the collection of outbuildings.

The Green Braselton House, built 1910, is located on Georgia SR 53/Greene Street north of the John Braselton House. The two-story Georgian-plan house built in the Colonial Revival style features a hipped roof, interior chimneys with decorative patterned brickwork, slightly front-projecting second-story bay, single and paired nine-over-one double-hung windows, one-story wrap-around porch with a wide entablature supported by single and paired classical columns, and trabeated main entrance. The landscaping includes large mature hardwood trees, grass lawn with foundation plantings, and circular driveway (see photos 20 and 21).

The third of the Braselton residences is the William Harrison (W.H.) Braselton House, built in 1913. The W.H. Braselton House is located on Georgia SR 53/Washington Street on the southern end of the district. The two-story Georgian-plan house built in the Neoclassical Revival style features a flat roof, modillions, dominant full-height front portico with fluted classical columns, second-story center-bay balcony, one-story side porches supported by fluted classical columns, one-over-one double-hung windows, and trabeated main entrance. Much of the historic landscaping associated with the house has been lost to a parking lot. The remaining historic elements include a grass lawn and mature hardwood trees (see photo 10). The building currently functions as the Braselton city hall.

The majority of the historic residences are one-story wood-framed dwellings featuring few stylistic elements. The earliest surviving residence within the historic district is located in an overgrown lot near the northeast corner of the intersection of Georgia SR 83/Green Street and Georgia SR 124/Davis Street. The dwelling, built c.1890, was originally constructed as a one-room store; however, during the historic period, the building was enlarged to a central hallway-type house. The dwelling features a side-gable metal roof, weatherboard exterior cladding, gable-end chimney, and interior central hallway (see photo 24). A similar central hallway-type house, built c.1900, is located on Liberty Church Road just north of its intersection with Georgia SR 124/Broadway Avenue. The house features a metal side-gable roof, wood-frame construction, weatherboard siding, full-width shed porch, and a centrally located front door opening into a central hallway with one room located on either side (see photo 4).

United States Department of the Interior  
National Park Service

## National Register of Historic Places Continuation Sheet

### Section 7--Description

---

The historic residence located on Georgia SR 53/Greene Street north of the Green Braselton House is the only historic brick residence, built c.1940, within the district. The one-and-a-half-story house built in the English Vernacular Revival style features masonry walls, steeply pitched gabled roof with dominant front-facing gables, and patterned brickwork and stone in the front-facing gable marking the main entrance (see photo 22).

The historic district features several excellent examples of historic agricultural/industrial buildings. As mentioned above, the Braselton Rolling Mill was constructed c.1900 and features two-and-a-half-story height, side-gable metal roof, weatherboard exterior cladding, and one-bay side additions (see photo 12).

A c.1920 cotton gin is located on the south side of Wall Street, a dirt road, behind the row of attached commercial buildings. The cotton gin is representative of the type of cotton gin built during the early 20th century. The two-story building features a side-gable metal roof, corrugated metal exterior cladding, covered wagon entry, and wrap-around porch (see photo 28). Historically, a siding (spur) of the Gainesville Midland Railroad (a section of the Central of Georgia Railroad) was located along Wall Street in front of the cotton gin. Located directly across Wall Street from the cotton gin is a row of cotton compresses and warehouses (see photo 29). These buildings feature low hipped roofs, fire walls, and large bay entrances (see photos 27 and 29). The Braselton family built the cotton gin next to the railroad siding to eliminate the need to ship the cotton from Braselton to Gainesville, Jefferson, or Athens for processing.

Historically, Braselton featured a high school with gymnasium located on Harrison Street in the southwest corner of the historic district. The Braselton High School was built in late 1920s and the gymnasium in 1926 with funds provided by the Braselton Family. The high school was torn down, but the steps leading to the school and parts of a low curb that outlines building remain. The site of the school has not been developed and the spatial relationship between the site of the school and the gymnasium is still clearly discernible (see photo 12). The gymnasium is a wood-framed three-bay building featuring a gable-front roof, overhanging eaves with triangular knee braces, a ventilator in the front gable, six-over-six double-hung windows, a projecting front-gable porch with triangular knee braces, and paired wooden front doors (see photo 8). The building now functions as the Braselton Flea Market.

The Braselton family cemetery is located in the far northwest corner of the historic district. The cemetery was founded in 1929 by the Braselton family. The entrance of the cemetery is marked by two stone decorative markers featuring a square base with a large rubble-faced sphere (see photo 2). A similar marker, smooth-face finish instead of the rubble-face finish, with the inscription "BRASELTON 1929" is located near the center of the cemetery (see photo 1). The cemetery features large mature hardwood trees, foundation shrubs, curvilinear roads, and decorative stone headstones varying in sizes.

United States Department of the Interior  
National Park Service

## National Register of Historic Places Continuation Sheet

### Section 7--Description

---

Historically, the town featured agricultural fields both within its city limits as well as outside the limits. Intact historic examples of terraced agricultural fields remain within the National Register district. Two fields behind the John Braselton House have retained their historic character. These fields have been terraced and continue to be planted.

The nonhistoric buildings within the district are not large in scale and are primarily located along Georgia SR 53. These buildings along Georgia SR 53 include the Braselton Post Office, Northeast Georgia Bank, and grocery store. There has been little modern residential development within the district.

The area outside the district includes the historic town of Hoschton to the south, Interstate 85 to the north, and modern residential and commercial development to the east and west.

---

**8. Statement of Significance**

---

**Certifying official has considered the significance of this property in relation to other properties:**

nationally       statewide       locally

**Applicable National Register Criteria:**

A       B       C       D

**Criteria Considerations (Exceptions):**  N/A

A    B    C    D    E    F    G

**Areas of Significance (enter categories from instructions):**

ARCHITECTURE  
LANDSCAPE ARCHITECTURE  
COMMERCE  
INDUSTRY

**Period of Significance:**

c.1887-1951

**Significant Dates:**

c.1887      Construction date of oldest historic building within the district.  
1916      Incorporation of Braselton.

**Significant Person(s):**

n/a

**Cultural Affiliation:**

n/a

**Architect(s)/Builder(s):**

n/a

United States Department of the Interior  
National Park Service

## National Register of Historic Places Continuation Sheet

### Section 8--Statement of Significance

---

#### **Narrative statement of significance (areas of significance)**

The Braselton Historic District is an excellent example of a late-19th- and early 20th-century Georgia town founded by a single family and supported on the strength of agricultural production. The historic district is significant in the areas of architecture, landscape architecture, commerce, and industry at the state level of significance.

The Braselton Historic District is significant in the areas of architecture and landscape architecture for its excellent collection of residential, commercial, and community landmark buildings located in their historic landscaped settings. The historic dwellings within the district date from 1887 to the late 1940s. They vary from wood-framed vernacular buildings to high-style buildings with formally landscaped yards. The significant architectural styles represented within the district include Folk Victorian, Neoclassical Revival, Colonial Revival, and Craftsman, as defined in the *Georgia's Living Places: Historic Houses in Their Landscaped Settings* context (1991). The significant architectural types include central hallway, saddlebag, gable ell cottage, Georgian cottage, Queen Anne cottage, and Georgian house, also as defined in the *Georgia's Living Places: Historic Houses in Their Landscaped Settings* context.

One of the oldest buildings remaining within the historic district was built c.1887. It is located in an overgrown lot on the northeast corner of Georgia SR 53/Green Street and Georgia SR 124/Davis Street. The dwelling is a good example of a central hallway-type house. The house was originally constructed as a one-room store and then enlarged to function as a dwelling. The character-defining features of the dwelling include the side-gable roof, weatherboard exterior cladding, gable-end chimney, and interior central hallway (see photo 24). According to the *Georgia's Living Places* context, the central hallway-type house was a favorite for Georgians built between 1830 and 1930, with clusters occurring in the periods 1840-1860 and 1870-1890. The type most frequently has a gabled roof and exterior end chimneys. The type seems to be fairly evenly distributed across the state, appearing mainly on average-sized farmsteads and on principal residential streets in Georgia's towns and cities. This dwelling also is a good example of the relatively common practice of changing the original use of a building. Although no formal documentation or study has been done on the practice of the adaptive use of buildings, it was commonly done in Georgia.

Another good example of a vernacular dwelling within the district is located on Liberty Church Road just north of its intersection with Georgia SR 124/Broadway Avenue. The character-defining features of the c.1900 saddlebag-type house include its side-gable metal roof, weatherboard exterior cladding, full-width shed porch, centrally located chimney, and two-bay front facade with each bay featuring a main door (entering into a single pen) and window (see photo 4). According to the *Georgia's Living Places* context, the saddlebag type is one of the most distinctive and easily recognizable house types in Georgia. The saddlebag features a central chimney flanked by two rooms (or pens). The rooms are usually square, and the roof is usually gabled. The earliest saddlebag houses, built in the 1830s

United States Department of the Interior  
National Park Service

## National Register of Historic Places Continuation Sheet

### Section 8--Statement of Significance

---

and 1840s in rural agricultural area, are quite rare statewide. In the last few decades of the century saddlebags were popular alternatives for modest housing in outlying fringes of Georgia's towns and cities. Far more examples survive today from the great period of mill village construction, from about 1910 to 1930.

An excellent example of a side-gable bungalow with Craftsman-style elements is located on the northwest corner of the "T"-intersection of Georgia SR 124/Broadway Avenue and Liberty Church Road. The character-defining features of the side-gable bungalow include its side-gable roof, overhanging eaves, front-projecting porch, and irregular floor plan (see photo 5). The bungalow type was very popular in all regions of Georgia between 1900 and 1930, both in rural areas and cities and towns. The Craftsman style was the most popular early 20th-century style in Georgia. The Craftsman style was a break with the popular revivals of historical styles and a movement toward the modern house. Craftsman styles were built across the state in rural, small town, and urban settings from the 1910s through the 1930s. The character-defining features of the Craftsman style included a low-pitched roof that is usually gabled but may also be hipped, widely overhanging eaves with exposed rafter tails, decorative brackets or braces at the eaves, porches have short square columns set on piers, and windows may have a multi-paned sash over a large one-pane sash.

The three significant historic dwellings associated with the Braselton family, the founding family, are the largest and grandest dwellings within the historic district. The John Braselton House, built 1900, is located on the northwest corner of the intersection of Georgia SR 53 and Georgia SR 124. The dwelling is a two-story Georgian-House type built in the Colonial Revival style. The character-defining features of the house include its truncated hipped roof with dormer, interior chimneys, one- and two-story wrap-around porches featuring dentils and supported by columns with Ionic capitals, machine-turned balustrade, one-over-one double-hung windows, and main and side entrances with fanlights and sidelights. A two-story ell was added to the rear of the residence during the historic period (see photo 15). According to the *Georgia's Living Places* context, the Georgian House type features two-story height and square plan shape; the roof is usually hipped but sometimes gabled, and chimneys are sometimes in the exterior walls but usually in the interior of the house, between each pair of rooms. The interior plan features a central hallway with two rooms located on either side of the hallway. The Georgian House was popular from the first decades of the 19th century well into the 20th century. Most examples of the type, however, were built in the periods 1850-1860 and 1900-1930. The Georgian House is much less common than its one-story Georgian cottage, one-story, counterpart.

The significant Colonial Revival features of the John Braselton House include, the hipped roof, full-width first- and second-story porches, and main and side entrances featuring slender columns, fanlights, and sidelights (see photo 15). Most Colonial Revival houses are symmetrical. A central entranceway is elaborated with a pediment supported by pilasters or columns. The roof may be hipped or side-gabled with dormers. Windows have double-hung sashes, usually with six-over-six or

United States Department of the Interior  
National Park Service

## National Register of Historic Places Continuation Sheet

### Section 8--Statement of Significance

---

nine-over-nine panes and may be paired. The Colonial Revival style was very popular in Georgia for a long period, from the 1890s through the 1940s and beyond.

The *Georgia Living Places* context identifies ten major types or forms of historic residential landscapes: the landscape of work, Ornamental yards, the swept yard, the Downingesque landscape, the Horticultural landscape, New South landscaping, landscape revivals at the turn of the century, Craftsman landscaping, 20th-century suburban landscaping, and the landscape of play. The historic landscaping plan, the landscape of work, associated with the John Braselton House is identified as significant in the *Georgia Living Places* context. The character-defining features of the landscape of work include a farmhouse, outbuildings, outdoor activity areas, a well, a small "kitchen garden" in a side or rear yard, agricultural fields and woodlots, and sometimes a small grove of fruit or nut trees. These components are linked by networks of paths, fences, and functional sight lines.

The character-defining features of the landscape of work associated with the John Braselton House include concrete and stone retaining walls, stone piers (with inscriptions) marking the main drive to the house, large hardwood trees, grass lawn with foundation plantings located near the house (see photos 15 and 16). Agricultural outbuildings and fields are located to the west of the house. These building include two large transverse barns, smokehouse, a tenant house, and sheds (see photos 17 and 18). A historic bell supported by concrete columns is also located near the outbuildings (see photo 17). The agricultural fields and wooded lots are located behind (west) the collection of outbuildings. A system of roads and walks connect the outbuildings (see Attachment 1: Site Plan/John Braselton House). The landscape of work occurs primarily on farms of all sizes dating from the 18th century to the present.

The Green Braselton House, built 1910, is located on Georgia SR 53/Greene Street north of the John Braselton House. The house is a two-story Georgian House built in the Colonial Revival style (similar to the John Braselton House). The character-defining features of the dwelling include a hipped roof, interior chimneys with decorative patterned brickwork, slightly front-projecting second-story bay, single and paired nine-over-nine double-hung windows, one-story wrap-around porch with a wide entablature supported by single and paired classical columns, and trabeated main entrance. The landscaping includes large mature hardwood trees, grass lawn with foundation plantings, and circular driveway (see photos 20 and 21).

The third of the Braselton family residences is the William Harrison (W.H.) Braselton House, built in 1913. The W.H. Braselton House is located on Georgia SR 53/Washington Street on the southern end of the historic district. The dwelling is a two-story Georgian House built in the Neoclassical Revival style. The character-defining features include a flat roof with balustrade, modillions, dominant full-height front portico with fluted classical columns, second-story center-bay balcony, one-story side porches supported by fluted classical columns, one-over-one double-hung windows, and trabeated main entrance (see photo 10).

United States Department of the Interior  
National Park Service

## National Register of Historic Places Continuation Sheet

### Section 8--Statement of Significance

---

The Neoclassical Revival style was very popular in Georgia. The style was part of the revival of interest in classically inspired architecture as well as a reaction against Victorian styles. The most common feature of the Neoclassical Revival style is a dominant full-height front portico with classical columns. The full-height entry portico is often coupled with a one-story full-facade porch. Other character-defining features include classical cornice with dentils or modillions, a usually low-pitched and hipped roof which may have a balustrade, a porte-cochere and side porches supported by columns, one-over-one double-hung windows, and elaborate main entrance featuring pilasters, columns, fanlights, sidelights, and transoms. The Neoclassical Revival style was built in Georgia's rural areas, cities, and small towns from the 1890s through the 1930s.

The historic dwelling located on the north side of Georgia SR 124/Davis Street near its intersection with Pinecrest Lane is a good representative example of a front-gable bungalow with Craftsman-style elements situated within an intact historic landscape design, the ornamental yard. The character-defining features of the front-gable bungalow include its low-pitched front-gable roof with wide overhanging eaves, enclosed integral front porch, Craftsman-style fixed windows with vents in the front gable, Craftsman-style braces along the eaves, and wooden porch supports on brick piers (see photo 32). The historic setting of the dwelling is an excellent representative example of the ornamental yard. According to the *Georgia Living Places* context, the ornamental yard generally is self-contained; sometimes literally enclosed by fences, walls, or terraces; sometimes delineated by dramatic changes in landscape treatment. It usually is situated along with the house on a high point of the ground. The character-defining features of the ornamental yard associated with this dwelling are the stone walls marking the steps leading from the Georgia SR 124/Davis Street to the elevated or raised front yard, the low concrete wall setting off the yard, and the foundation plantings and grass yard (see photo 32).

Another good example of a historic dwelling in its historic landscaped setting is located on the far eastern edge of the historic district on the north side of Georgia SR 124/Davis Street. The Georgian cottage-type house was built c.1900. The Georgian cottage was possibly the single most popular and long-lived house type in Georgia. The Georgian plan consists of a central hallway with two rooms on either side. The plan shape is square or nearly so; the roof is usually hipped but sometimes gabled; and chimneys are sometimes in the exterior walls but usually in the interior of the house. The character-defining features of this dwelling include the side-gable roof, square plan shape, and interior central hallway (see photo 34). (The ends of the front porch were enclosed to create additional rooms during the historic period.) The setting of the historic dwelling features ornamental yard-type elements which include a low concrete and stone wall with steps leading to an elevated or raised front yard and foundation plantings and grass yard (see photo 34).

The historic commercial resources, built 1902 to 1940, are located near the core of the town. A row of attached stores is located on the southeast corner of the intersection of Georgia SR 124/Davis Street and Georgia SR 53/Washington Street. The character-defining features of the row of attached

United States Department of the Interior  
National Park Service

## National Register of Historic Places Continuation Sheet

### Section 8--Statement of Significance

---

one-story brick stores include flat roofs with parapets, terra-cotta coping, historic signage, bands of windows with transoms, large display windows, recessed main entrances, and three-bay front facades (see photo 25). The attached row of stores is an excellent example of the multiple retail type, as defined in the *Georgia Resources Survey* guide. The character-defining features of the multiple retail type include two or more attached units built together, typically one-story, identical facades and storefronts, and usually three-bays wide. This type was typically built in Georgia from the 1890s through the 1930s.

A second concentration of commercial buildings, built during the early 1900s, is located on the southwestern corner of Georgia SR 53/Washington Street and Georgia 124/Broadway Avenue. An excellent example of an early 20th-century gas station is oriented towards the intersection. The character-defining features of the gas station include its low-pitched hipped roof which incorporated a canopy, overhanging eaves, and three-bay central block (see photo 13 and 14). This standardized form of gas station was commonly built in Georgia during the early to mid-20th century.

Located directly behind (southeast) the gas station is a c.1920 car garage. The character-defining features of the building include its front-gable roof, wood-frame construction, and two large bay openings; the building historically and continues to function as an auto garage (see photo 14-the garage appears to be attached to the gas station, but is actually a freestanding building).

Another commercial building associated with the automobile is the Braselton Tire store. The building was constructed in 1935 and the character-defining features of the one-and-a-half-story building include its front-gable roof, wood-frame construction, and large single-bay opening (see photo 13).

The historic district features several excellent examples of historic agricultural/industrial buildings. The Braselton Rolling Mill was constructed by the Braselton family c.1900. The character-defining features of the building include its two-and-a-half-story height, side-gable metal roof, weatherboard exterior cladding, and one-bay side additions (see photo 12).

A c.1920 cotton gin is located on the south side of Wall Street, a dirt road, behind (south) the row of attached commercial buildings. The cotton gin is a good representative example of the type of cotton gin built during the early 20th century. The character-defining features include its two-story height, a side-gable metal roof, metal exterior cladding, covered wagon entry, and wrap-around porch (see photo 28). Historically, a siding (spur) of the Gainesville Midland Railroad (a section of the Central of Georgia Railroad) was located along Wall Street in front of the cotton gin.

Located directly across Wall Street from the cotton gin is a row of cotton compresses/warehouses (see photo 29). The character-defining features of these buildings include their low-hipped roofs, masonry construction, fire walls, buttresses, and large bay entrances on the front and rear facades. (see photos 27 and 29).

United States Department of the Interior  
National Park Service

## National Register of Historic Places Continuation Sheet

### Section 8--Statement of Significance

---

The last remaining historic community landmark building is the Braselton gymnasium, built in the late 1920s. The gymnasium is an excellent representative example of the type of gymnasium built in Georgia's small towns during the early 20th century. The character-defining features of the building include its front-gable roof, one-and-a-half-story height, wood-frame construction, overhanging eaves with Craftsman-style triangular knee braces, a ventilator in the front gable, six-over-six double-hung windows, a projecting front-gable porch with Craftsman triangular knee braces, and paired wooden front doors (see photo 8). The gymnasium was associated with the Braselton High School built in the early 1920s. The high school building has been torn down but the historic steps leading from the road to the school and a low curbing mark the location of the school. These are significant landscape features that help to retain the spatial relationship between the site of the school (the site has remained vacant since the school was torn down) and the gymnasium (see photo 8).

The district's other historic landscape architecture components include informally landscaped yards, mature hardwood trees along the streets, 10-foot wide residential streets, and the Braselton family cemetery. The Braselton family cemetery is located on Liberty Church Road in the far northwestern corner of the district.

The Braselton Historic District is significant in the areas of commerce and industry for its excellent collection of commercial and industrial resources located near the central core of the historic district which represent the commercial and industrial role played by the community during the early 20th century. Although not the county seat nor the largest community in the county, Braselton served as a commercial and industrial center for portions of three counties: western Jackson, northwestern Barrow, and southeastern Hall. Its regional prominence was due in part to its location along the railroad and in part to aggressive marketing and salesmanship by the Braselton brothers. From the 1890s through the mid-20th century, Braselton served as a market and shipping point for agricultural products, particularly cotton (as evidenced by the surviving cotton gin and warehouses), and as a retail center for goods and services (as evidenced by the surviving downtown commercial buildings).

The first store was established in Braselton by John Braselton, the youngest son of William Harrison (W.H.) Braselton and Susan Braselton, in 1887. The house located in the overgrown lot on the northeast corner of Georgia SR 53/Green Street and Georgia SR 124/Davis Street was originally built as John Braselton's one-room store. During the historic period, the house was enlarged to serve as a residence (see photo 24). In 1891, John's brother, Green Braselton, joined him in the operations of the store. The Braseltons continued their development of a commercial center in Braselton by constructing more stores at the main intersection of town, Georgia SR 53 at Georgia SR 124. The Braseltons' commercial efforts were given a boost in 1882 with the completion of a Gainesville, Jefferson, and Social Circle Railroad (later the Gainesville Midland Railroad then the Central of Georgia Railroad) through Braselton.

In 1902, the Braseltons constructed the Braselton Commission Company on the corner of Georgia SR 53 and Georgia SR 124 (see photo 25). The building has been added onto during the historic

United States Department of the Interior  
National Park Service

## National Register of Historic Places Continuation Sheet

### Section 8--Statement of Significance

---

period and has housed a dry goods store, post office, office and freight depot of the Gainesville Midland Railroad, local express office, Braselton Bank Company, Braselton Chamber of Commerce, and a wholesale general merchandise company. The Braselton family would continue to build stores in this area until the 1940s.

The railroad initiated industrial as well as commercial development in Braselton. In 1900, the Braselton family constructed the large Braselton rolling mill located on the west side of Georgia SR 53/Washington Street. The railroad historically followed the alignment of Georgia SR 53; the tracks were removed in 1947. The rolling mill is a good and rare representative example of the type of steampowered rolling mill constructed in a small town in Georgia during the early 20th century. The character-defining features of the building include its two-and-a-half-story height, side-gable metal roof, weatherboard exterior cladding, and one side-bay addition (see photo 12).

Overall, the Braselton Historic District has retained a high level of integrity and is an excellent example of a small Georgia town founded on the production of cotton as well as the availability of the railroad to move goods and services.

### National Register Criteria

The Braselton Historic District is eligible under National Register Criterion A for its significant association to the commercial and industrial history of the town. The district is also eligible under National Register Criterion C for its excellent collection of residential, commercial, industrial, and community landmark buildings associated with small towns in Georgia.

### Criteria Considerations (if applicable)

n/a

### Period of significance (justification)

The period of significance begins c.1887 with the oldest remaining building and ends in 1951, the end of the historic period.

### Contributing/Noncontributing Resources (explanation, if necessary)

The 52 contributing resources encompass 46 historic dwellings; five sites consisting of the remaining landscape features of the Braselton High School, three terraced agricultural fields, and the Braselton family cemetery; and one structure consisting of the intact system of roads. The 8 noncontributing resources consist of buildings that were either built after 1951 or have lost historic integrity due to additions and alterations.

United States Department of the Interior  
National Park Service

## National Register of Historic Places Continuation Sheet

### Section 8--Statement of Significance

---

#### Developmental history/historic context (if appropriate)

**\*\*Note: The following history was prepared by Bruce Lonnee and Harris Walker Jr., "Braselton Historic District," Historic District Information Form, February 23, 1998. On file at the Historic Preservation Division, Georgia Department of Natural Resources, Atlanta, Georgia.**

The Braselton family first began farming the present site of Braselton when William Harrison Braselton, Sr. and his wife Susan settled there in 1876. The town of Braselton got its start when John Oliver Braselton, the youngest son of William Harrison and Susan Braselton, decided at the age of eight years old that he would become a storekeeper. John Braselton took a six-by-six foot outbuilding and turned it into a store to sell candy to local farm hands. The store was a success and was quickly replaced by a second, third, and finally fourth building. John Braselton asked his older brother Green to join the firm the next year, and in 1891 the oldest brother, William Henry (Jr.), joined the business. They locally became known as the famous three B's.

The Braselton brothers built their stores close to the junction of two rural roads (now Georgia SR 53 and Georgia SR 124 ) and the Gainesville, Jefferson, and Social Circle Railroad. The roads had been in place for some time, but the rail line had been built in 1882 and spurred growth in the area. Local farmers had access to shipping and receiving large cargoes of agricultural goods. Before the completion of the railroad through Braselton, farmers used the freight station located in Hoschton, a town just south of Braselton.

By the time the fourth building was constructed in 1902, the business had expanded from candy to dry goods, notions, shoes, millinery, clothing, and groceries. It was the largest building in Braselton, and by 1921 it had been expanded to the point that it housed the store, the local post office, the offices and freight depot of the Gainesville Midland Railroad, the local express office, Braselton Bank Company, Braselton Chamber of Commerce, and a wholesale general merchandise company called the Braselton Commission Company. Space for the storage of over five hundred bales of cotton was in the warehouse section of the building. By 1944, additional businesses included undertaking, barber shop, filling station, garage, planing mill, and blacksmith. As late as 1990 this building housed grocery, hardware, furniture, appliances, and dry goods stores.

Just south of this building on Georgia SR 53 stands the Braselton Roller Mill. The roller mill was built by the Braselton brothers around 1900 and was one of the earliest full-operating rolling mills in northeast Georgia.

In 1902, the railroad constructed a siding along Wall Street behind the row of commercial buildings along Georgia SR 124/Davis Street. The Braselton brothers built a cotton gin along the siding during the early 1920s. The ability to ship cotton directly from Braselton made it possible to keep more money in the community rather than pay dealers in Gainesville, Jefferson, or Athens to process the

United States Department of the Interior  
National Park Service

## National Register of Historic Places Continuation Sheet

### Section 8--Statement of Significance

---

cotton. This led to expansion of the family businesses and an overall increase in wealth in the Braselton area both in and out of the Braselton family.

Shortly after the city of Braselton was incorporated in 1916, the three Braselton brothers paid for the construction of a high school in 1919 (the school was destroyed the following year during a storm). Braselton continued to grow during the 1920s with the construction of more housing and commercial buildings.

The depression of the 1930s posed little threat for the local economy because the local agriculture was composed of staples rather than luxuries. The Braselton brothers' businesses continued to thrive during this time period, and their customers came from surrounding counties. As in most agricultural areas, the local businesses extended credit through the year and were paid when the crops were sold. Braselton did better than most communities in this endeavor because the Braselton brothers charged much less than other merchants for this carrying fee. When most Georgia merchants were charging \$8 to carry a sack of flour worth \$5, the Braseltons were charging the customer \$5.50. The net result of all of this was that the town of Braselton had a great deal more country folk coming in to do business than a lot of the other nearby rural towns of similar and even larger size.

While cotton growing was declining during the late 1930s and 1940s, residents moved from agriculture to manufacturing jobs. Textile mills, manufacturing plants, and poultry dressing plants moved into the area. Poultry production began in the county around 1927 and the increase in production has been tremendous over the past 40 years. Northeast Georgia has become one of the nation's leading poultry-producing regions.

Following the end of World War II, the importance of Braselton shifted from a regional agricultural business center to a more regional shopping center. Braselton was an established mid-point between Gainesville and Winder which resulted in commercial traffic moving through town. Braselton became a convenient shipping and mercantile center for produce and goods during the mid-20th century. After the establishment of the large regional shopping malls, the Braselton commercial core slowly started to decline. In 1990, actress Kim Bassinger purchased the commercial core of Braselton to revitalize the stores; however, the stores continued to close. Today, some professional offices and a furniture store remain active in the commercial core.

---

## 9. Major Bibliographic References

---

Braselton, Leta G. The Braselton Family Album; Braselton Georgia; 1876-1982. Atlanta: Conger Printing, 1982.

"Braselton Historic District," Historic Property Information Form, 1998. On file at the Historic Preservation Division, Georgia Department of Natural Resources.

Elrod, Frary. Historical Notes on Jackson County Georgia. Jefferson, Georgia 1967.

Georgia Department of Natural Resources. "Georgia's Living Places: Historic Houses in Their Landscaped Settings." 1991. On file at the Historic Preservation Division, Georgia Department of Natural Resources.

Stewart, William C. Gone to Georgia: Jackson and Gwinnett Counties and their Neighbors in the Western Migration. Washington D.C. 1965.

White, W.E., ed. The Early History of Jackson County, Georgia. Atlanta 1914.

**Previous documentation on file (NPS): (X) N/A**

- preliminary determination of individual listing (36 CFR 67) has been requested**
- preliminary determination of individual listing (36 CFR 67) has been issued**  
**date issued:**
- previously listed in the National Register**
- previously determined eligible by the National Register**
- designated a National Historic Landmark**
- recorded by Historic American Buildings Survey #**
- recorded by Historic American Engineering Record #**

**Primary location of additional data:**

- State historic preservation office**
- Other State Agency**
- Federal agency**
- Local government**
- University**
- Other, Specify Repository:**

**Georgia Historic Resources Survey Number (if assigned): n/a**

---

## 10. Geographical Data

---

**Acreage of Property**                      Approximately 60 acres.

### UTM References

A)	Zone 17	Easting 245,693	Northing 3,777,911
B)	Zone 17	Easting 245,708	Northing 3,777,104
C)	Zone 17	Easting 244,477	Northing 3,777,127
D)	Zone 17	Easting 244,485	Northing 3,777,906

### Verbal Boundary Description

The boundary for the Braselton Historic District is indicated by a heavy black line on the attached USGS topographical map and the attached National Register Map.

### Boundary Justification

The National Register boundary for the Braselton Historic District includes the contiguous resources associated with the development of the town. The area outside of the district consists of modern residential and industrial development, historic development associated with the town of Hoschton, Jackson county, and modern highway project (Interstate 85).

---

## 11. Form Prepared By

---

### State Historic Preservation Office

**name/title** Amy Pallante

**organization** Historic Preservation Division, Georgia Department of Natural Resources

**street & number** 156 Trinity Aveune, Suite 101

**city or town** Atlanta **state** Georgia **zip code** 30303

**telephone** (404) 656-2840 **date** March 2001

**Consulting Services/Technical Assistance (if applicable)** ( ) not applicable

**name/title** Bruce Lonnee and Harris C. Walker Jr./Preservation Intern

**organization** Northeast Georgia Regional Development Center

**street and number** 305 Research Drive

**city or town** Athens **state** Georgia **zip code** 30605-2795

**telephone** (706) 369-5650

( ) **consultant**

(X) **regional development center preservation planner**

( ) **other:**

(HPD form version 02-24-97)

United States Department of the Interior  
National Park Service

**National Register of Historic Places  
Continuation Sheet**

Photographs

---

**Name of Property:** Braselton Historic District  
**City or Vicinity:** Braselton  
**County:** Jackson  
**State:** Georgia  
**Photographer:** James R. Lockhart  
**Negative Filed:** Georgia Department of Natural Resources  
**Date Photographed:** August 1998

**Description of Photograph(s):**

- 1 of 34 View of Braselton family cemetery; photographer facing west.
- 2 of 34 View of entrance to the Braselton family cemetery; photographer facing west.
- 3 of 34 View of a Georgian cottage-type residence on Liberty Church Road; photographer facing northwest.
- 4 of 34 View of double pen-type residence on Liberty Church Road; photographer facing northwest.
- 5 of 34 View of Craftsman bungalow on the corner of Georgia SR 124/Broadway Avenue and Liberty Church Road; photographer facing west.
- 6 of 34 Streetscape of Georgia SR 124/Broadway Avenue; photographer facing west.
- 7 of 34 View of Craftsman bungalow and steps and foundation of the Braselton High School; photographer facing south.
- 8 of 34 View of the Braselton Gymnasium; photographer facing south.
- 9 of 34 View of historic building (library); photographer facing north. These historic warehouses and serve as the Braselton Library.
- 10 of 34 View of the W.H. Braselton House; photographer facing northeast.
- 11 of 34 Streetscape view of Georgia SR 53/Washington Street; photographer facing north.
- 12 of 34 View of the Braselton rolling mill; photographer facing west.

United States Department of the Interior  
National Park Service

## National Register of Historic Places Continuation Sheet

### Photographs

---

- 13 of 34 Streetscape view of Georgia SR 124/Washington Street; photographer facing northwest.
- 14 of 34 View of historic gas station at the intersection of Georgia SR 124 and Georgia SR 53; photographer facing southwest.
- 15 of 34 View of the John Braselton House; photographer facing west.
- 16 of 34 View of the main drive and outbuildings of the John Braselton House; photographer facing northwest.
- 17 of 34 Detail view of the outbuildings of the John Braselton House; photographer facing northwest.
- 18 of 34 View of large barn and historic bell of the John Braselton House; photographer facing northwest.
- 19 of 34 View of a second large barn of the John Braselton House; photographer facing northwest.
- 20 of 34 View of the Green Braselton House and landscaping; photographer facing northwest.
- 21 of 34 Detail view of the Green Braselton House; photographer facing southwest.
- 22 of 34 View of English Vernacular-style house; photographer facing northwest.
- 23 of 34 Streetscape view of Georgia SR 53/Greene Street; photographer facing south.
- 24 of 34 View of central hallway-type house; photographer facing southeast.
- 25 of 34 View of the intersection of Georgia SR 124 and Georgia SR 53; photographer facing west.
- 26 of 34 View of historic residence on Georgia SR 124/Davis Street; photographer facing north.
- 27 of 34 View of cotton compresses/warehouses; photographer facing southwest.
- 28 of 34 View of Braselton cotton gin; photographer facing southwest.

United States Department of the Interior  
National Park Service

## National Register of Historic Places Continuation Sheet

### Photographs

---

- 29 of 34 Streetscape view of Wall Street (railroad siding historically located along this corridor); photographer facing southwest.
- 30 of 34 Rear view of historic Braselton store; photographer facing southwest.
- 31 of 34 Streetscape view of Georgia SR 53/Davis Street; photographer facing west.
- 32 of 34 View of historic landscaping and Craftsman bungalow; photographer facing northwest.
- 33 of 34 Streetscape view of Georgia SR 53/Davis Street; photographer facing west.
- 34 of 34 View of historic landscaping and residence; photographer facing north.

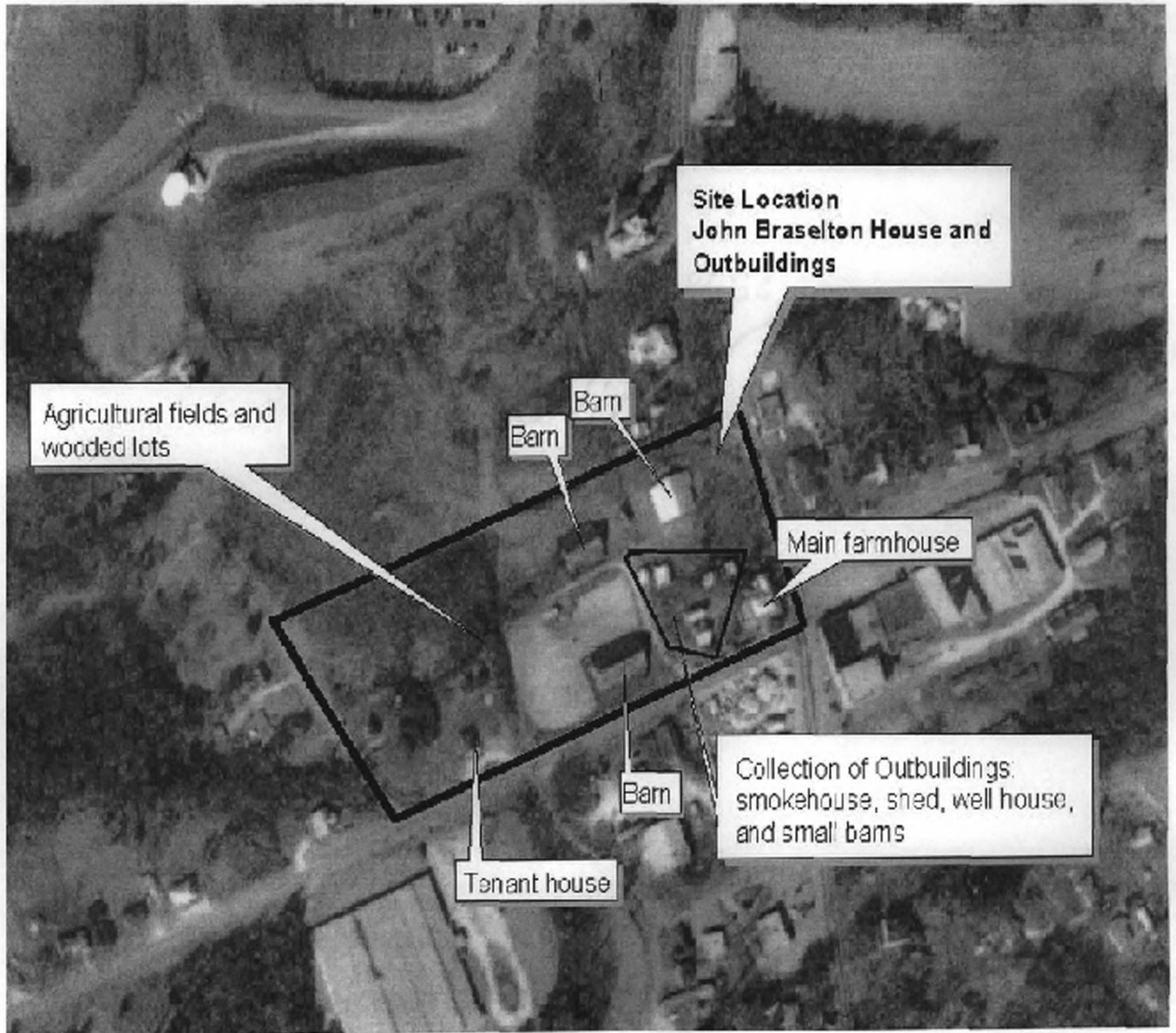
**ATTACHMENT 1**

Braselton Historic District

Braselton, Jackson County, Georgia

Aerial photograph of the John Braselton House and outbuildings

Not to scale



**NATIONAL REGISTER MAP**

**BRASELTON HISTORIC DISTRICT  
BRASELTON, JACKSON COUNTY, GEORGIA**

- CONTRIBUTING BUILDING = ●
  - NONCONTRIBUTING BUILDING = ○
  - CONTRIBUTING SITE = ▲
  - PHOTO NUMBER AND DIRECTION = ⊙
- NOT TO SCALE**

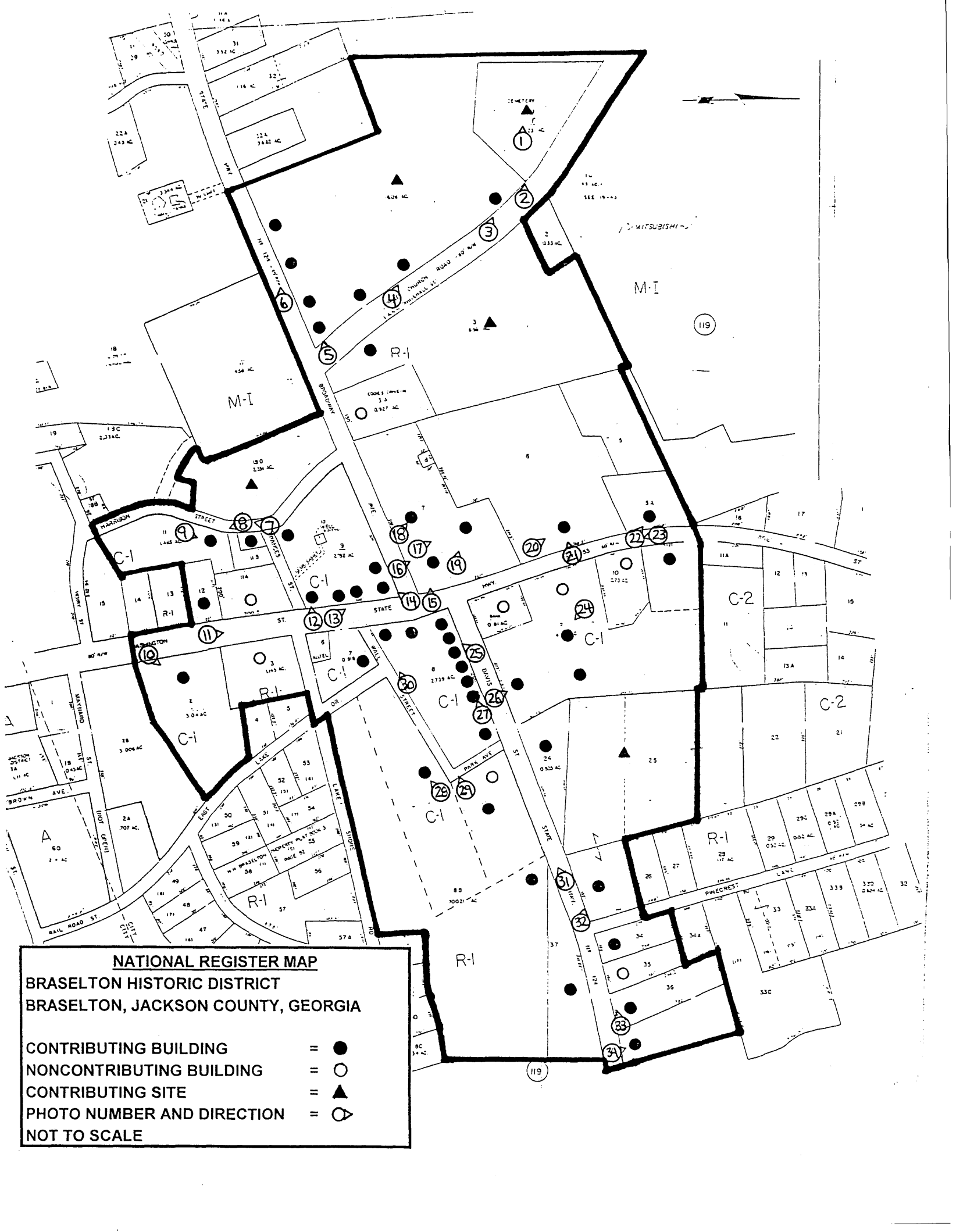




Photo 1



Photo 2



Photo 3



Photo 4



Photo 5



Photo 6



Photo 7



Photo 8



Photo 9



Photo 10



Photo 11



Photo 12



Photo 13



Photo 14



Photo 15



Photo 16



Photo 17



Photo 18



Photo 19



Photo 20



Photo 21



Photo 22



Photo 23



Photo 24



Photo 25



Photo 26



Photo 27



Photo 28



Photo 29



Photo 30



Photo 31



Photo 32



Photo 33



Photo 34

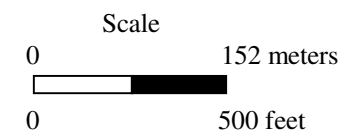
**APPENDIX B - APPROXIMATE REPLICATION OF NOMINATION PHOTOGRAPHY**

**(PHOTOS 1-34)**





Map Reference: Google Earth (2017)



Appendix B 1999 Google Earth Aerial Photography Showing Nominated Resources and Replicated Nomination Photography



Photo 1 - View Looking North to the Braselton Family Cemetery Monument



Photo 2 - View Looking Northwest to Braselton Family Cemetery Entrance



Photo 3 - View Looking Northwest to the Former Site of Resource No. 2



Photo 4 - View Looking Northwest to the Former Site of Resource No. 4



Photo 5 - View Looking West to the Former Site of Resource Nos. 8 and 9



Photo 6 - View Looking West to the Former Site of Resource Nos. 6 and 7



Photo 7 - View Looking Southwest to Resource Nos. 13 and 15



Photo 8 - View Looking Southeast to Resource No. 16



Photo 9 - View Looking Northeast Now Showing Absence of Historic Resources



Photo 10 - View Looking Northeast to the W.H. Braselton House (No. 18)



Photo 11 - Contextual View Looking Northwest Along SR 53 to Downtown Core



Photo 12 - View Looking Northwest to Resource No. 21 (Rolling Mill), Resource No. 62 at Left



Photo 13 - View Looking Northwest to Wood Commercial Area, Nos. 22-25 (No. 22 at Left is Absent)



Photo 14 - View Looking Southwest to Wood Commercial Area, Nos. 23-25



Photo 15 - View Looking West to the John Braselton House (No. 27)



Photo 16 - View Looking Northwest to the John Braselton Farm (No. 28)



Photo 17 - View Looking North to Resource No. 28



Photo 18 - View Looking Northwest to the John Braselton Farm (No. 26)



Photo 19 - View Looking Northwest to Resource No. 28



Photo 20 - View Looking Northwest to Green Braselton House (No. 29)



Photo 21 - View Looking West to Green Braselton House (No. 29)



Photo 22 - View Looking Northwest to Resource No. 30



Photo 23 - Contextual View Looking Southeast Along SR 53 to District Core



Photo 24 - View Looking Southeast to Site of No. 34



Photo 25 - View Looking Southwest to District Core (No. 39 at Left)



Photo 26 - View Looking North to Site of No. 37



Photo 27 - Contextual View Looking Southwest to Brick Commercial Area



Photo 28 - View Looking Southwest to Resource 49 (Cotton Gin)



Photo 29 - Contextual View Looking West to District Core From No. 49



Photo 30 - Contextual View Looking Southwest Along Former Wall Street



Photo 31 - Contextual View Looking Southwest to Nos. 50 and 54 (Now Absent)



Photo 32 - View Looking Northwest to No. 53



Photo 33 - Contextual View Looking Southwest to Nos. 55-57 and 59 (Left)

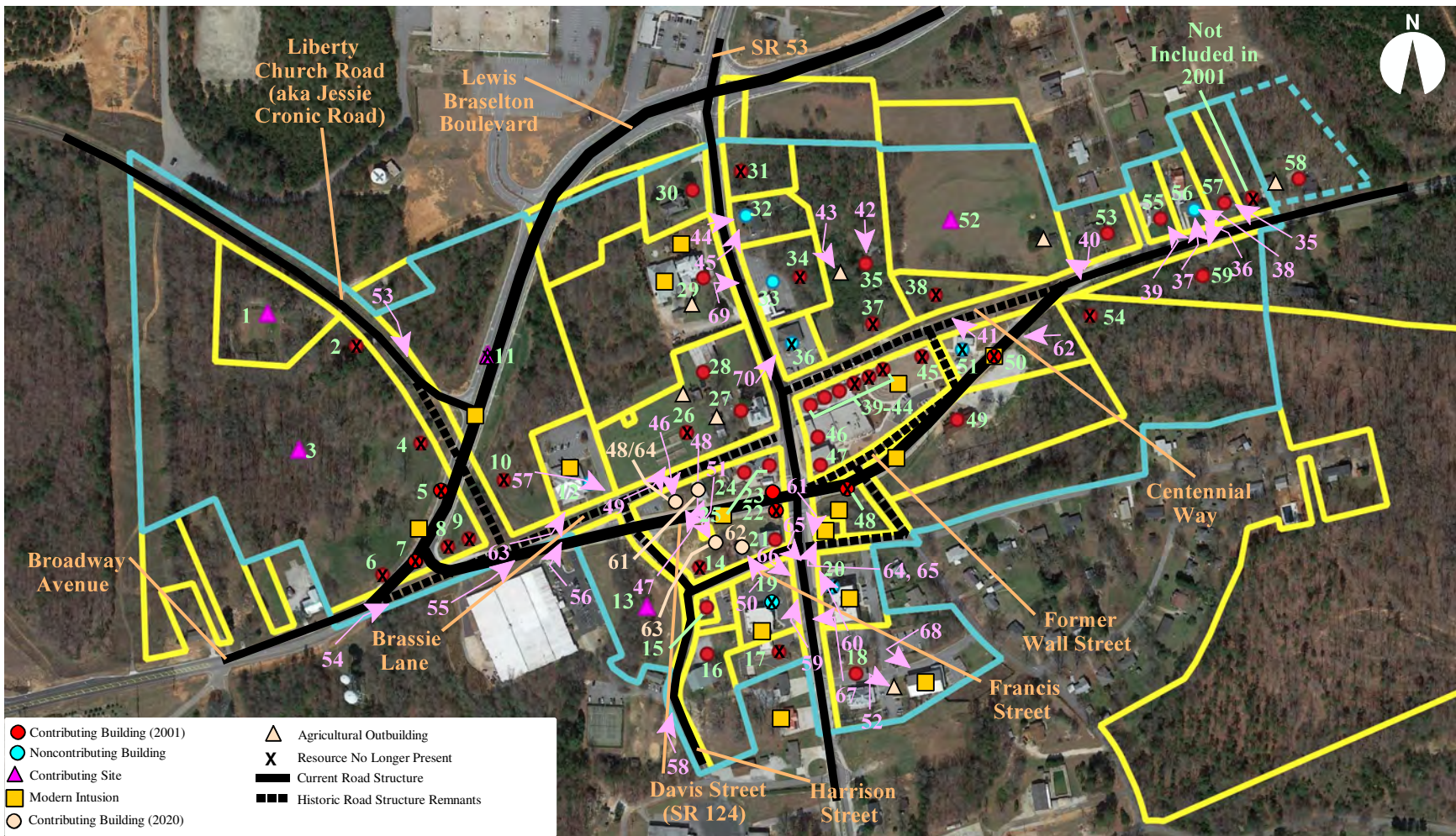


Photo 34 - View Looking Northwest to No. 58

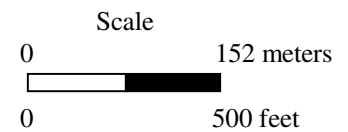


**APPENDIX C - PHOTOGRAPHY OF ADDITIONAL HISTORIC RESOURCES,  
CURRENT DISTRICT SETTING AND MODERN INTRUSIONS  
(PHOTOS 35-70)**





Map Reference: Google Earth (2017)



Appendix C 2017 Google Earth Aerial Photography Showing Additional Resources, Current Context and Modern Intrusions



Photo 35 - View Looking Northwest to No. 57



Photo 36 - View Looking Southwest to No. 59



Photo 37 - View Looking North to No. 56



Photo 38 - View Looking Northwest to No. 56



Photo 39 - View Looking Northwest to No. 55



Photo 40 - View Looking Northwest to Resource No. 52 and Outbuilding



Photo 41 - View Looking Northeast to the Site of Resource No. 38



Photo 42 - View Looking South to Resource No. 35, North Side



Photo 43 - View Looking Southeast to Historic Agricultural Crib Perhaps Associated with Resource No. 34



Photo 44 - View Looking East to Resource No. 32



Photo 45 - View Looking Northeast to Resource No. 32



Photo 46 - View Looking Southeast to Relocated Resource No. 48/64



Photo 47 - View Looking Northwest to Relocated Resource No. 48/64



Photo 48 - View Looking Northeast to Resource No. 61



Photo 49 - View Looking Northeast to John Braselton Farm (Resource Nos. 26 and 28)



Photo 50 - View Looking Northwest to Resource No. 62



Photo 51 - View Looking South to Old Jail, Resource No. 63 (Relocated From Resource No. 49)



Photo 52 - View Looking Southeast to Historic Outbuilding at Resource No. 18



Photo 53 - View Looking Southeast Across Resource No. 11 (Contributing Site)



Photo 54 - View Looking Northeast to Resource Nos. 5-11 (Absent)



Photo 55 - Contextual View Looking Northeast Along Former Broadway Avenue (Center-Left)



Photo 56 - Contextual View Looking Northeast to John Braselton Farm



Photo 57 - Contextual View Looking Southeast to New SR 124 and Resource No. 14



Photo 58 - Contextual View Looking Northeast to Resource Nos. 13-16



Photo 59 - Contextual View Looking Northeast Along SR 53 to District Core



Photo 60 - Contextual View Looking Northwest to District Core



Photo 61 - Contextual View Looking Southwest to Resource Nos. 17 and 19 (Absent)



Photo 62 - View Looking West to Former Davis Street (Centennial Way) and Site of No. 45 (Right)



Photo 63 - View of the Braselton Library (Formerly Part of John Braselton Farm)



Photo 64 - View Looking Northeast to Modern Parking Garage, Site of Resource No. 48



Photo 65 - View Looking Northeast to Modern Communication Building, Site of Resource No. 48



Photo 66 - View Looking Southeast to Modern Municipal Building, Site of Resource No. 20



Photo 67 - View Looking West to Modern Northeast Georgia Bank Building, Site of Nos. 17 and 19



Photo 68 - View Looking Southeast to Modern Municipal Building at No. 18



Photo 69 - View Looking Southeast to No. 33 (Post Office Building)



Photo 70 - View Looking Northeast to No. 36 (Rehabilitated Bank Building)



**APPENDIX D - TABLE OF COMPILED AND ADDITIONAL  
RESOURCE INFORMATION**



TABLE 1 BRASELTON HISTORIC DISTRICT ATTRITION STUDY RESOURCE INVENTORY

Resource Number	2001 Historic District Status	Resource Type	Resource Name, if applicable	Current Tax Parcel No.	Current Property Owner	2020 Historic District Status	Photographs/ Graphics	Notes and Comments
<b>HISTORIC RESOURCES IDENTIFIED DURING 2001 NRHP NOMINATION PROCESS</b>								
Resource No. 1	Contributing Site	Funerary Site	Braselton Family Cemetery	B01 001	Braselton Family Memorial Cemetery Foundation	Not In District, Independently Eligible Resource	Photo No. 1	
Resource No. 2	Contributing Building	Dwelling	159 Jesse Cronin Road	B01 001A	Jack Frost	Not In District, Ruins Only Remain	Photo No. 2	
Resource No. 3	Contributing Site	Woods or Former Ag. Fields	N/A	B01 001A	Jack Frost	Not In District, Isolated	No Photograph	
Resource No. 4	Contributing Building	Dwelling	73 Jesse Cronin Road	B01 001A	Jack Frost	Not In District, Missing	Photo No. 4	Described in 2001 as second oldest dwelling in Braselton (Ca. 1890)
Resource No. 5	Contributing Building	Dwelling	N/A	Roadway	N/A	Not In District, Missing	No Photograph	Resource Nos. 5-10 are all located in or near the current intersection
Resource No. 6	Contributing Building	Dwelling	House on SR 124 (Between 254 and 300)	Roadway	N/A	Not In District, Missing	Photo No. 6	Davis Street and Broadway Avenue
Resource No. 7	Contributing Building	Dwelling	254 SR 124	Roadway	N/A	Not In District, Missing	Photo No. 6	
Resource No. 8	Contributing Building	Dwelling	N/A	Roadway	N/A	Not In District, Missing	Photo No. 5	
Resource No. 9	Contributing Building	Dwelling	Residence A	Roadway	N/A	Not In District, Missing	Photo No. 5	
Resource No. 10	Contributing Building	Dwelling	34 Jesse Cronin Road	Roadway	N/A	Not In District, Missing	No Photograph	
Resource No. 11	Contributing Site	Woods or Former Ag. Fields	N/A	B01 003	Braselton Township Development, LLC	Not In District, Broken Up and Isolated	Appendix C: Photo Nos. 53 and 54	
Resource No. 12	Non-Contributing Building	Dwelling	Tenant House on J. Braselton Place	B01 003A	Town Of Braselton (Library)	Not In District, Missing	Appendix C: Photo Nos. 56 and 63	See Also 2001 Attachment No.1; Current Building is the Braselton Library
Resource No. 13	Contributing Site	Community Landmark	Site of Circa 1920 High School	B01 018D	Braselton Township Development, LLC	Contributing Site	Photo No. 7	
Resource No. 14	Contributing Building	Large Barn/Storage Facility	N/A	B01 009	Braselton Urban Development Agency	Not In District, Missing	Appendix A: Photo 9 (Background), Appendix C: Photo 58	
Resource No. 15	Contributing Building	Educational Facility	Home Economics Department	B01 011C	City of Braselton	Contributing Building	Photo No. 7	Rehabilitated for Commercial use-“House of Clay”
Resource No. 16	Contributing Building	Community Landmark	Gymnasium and Cafeteria	B01 011	Braselton Downtown Development Authority	Contributing Building (Gymnasium only present)	Photo Nos. 8 and 9	Gymnasium Rehabilitated for Commercial Use-Antique Shop
Resource No. 17	Contributing Building	Dwelling	N/A	B01 012	Northeast Georgia Bank	Not In District, Missing	Appendix C: Photo No. 61	
Resource No. 18	Contributing Building	Dwelling	W.H. Braselton House and Property	B01 002	Town of Braselton, GA	Not In District, Independently Eligible Resource	Photo No. 10, Appendix C: Photo 52 Outbuilding	Currently Serves as Braselton Town Hall
Resource No. 19	Non-Contributing Building	Modern Commercial	Formerly Dado's Restaurant	B01 011A	Northeast Georgia Bank	Not In District, Missing	Appendix C: Photo No. 61	
Resource No. 20	Non-Contributing Building	Unknown	N/A	B02 003	Town Of Braselton	Not In District, Missing	Appendix C: Photo 66	Modern Braselton Police and Municipal Court Building
Resource No. 21	Contributing Building	Historic Wood Commercial	Rolling Mill Building	B01 009	Braselton Urban Development Agency	Contributing Building	Photo 12	An unidentified historic building remains present to its west
Resource No. 22	Contributing Building	Historic Wood Commercial	Braselton Tire Company	Roadway-New SR 124	N/A	Not In District, Missing	Photo 13 (At Left)	Destroyed by Introduction of Current Georgia SR 124 Crossroad
Resource No. 23	Contributing Building	Historic Wood Commercial	The Scott Building	B01 009	Braselton Urban Development Agency	Contributing Building	Photo 13 (Center)	Unknown Current Use
Resource No. 24	Contributing Building	Historic Wood Commercial	Old Barber Shop	B01 009	Braselton Urban Development Agency	Contributing Building	Photo 14 (Center-Right)	Rehabilitated Commercial or Retail Use

TABLE 1 BRASELTON HISTORIC DISTRICT ATTRITION STUDY RESOURCE INVENTORY

Resource Number	2001 Historic District Status	Resource Type	Resource Name, if applicable	Current Tax Parcel No.	Current Property Owner	2020 Historic District Status	Photographs/ Graphics	Notes and Comments
Resource No. 25	Contributing Building	Historic Wood Commercial	Circa 1925 Gas Station	B01 009	Braselton Urban Development Agency	Contributing Building	Photo 14 (Center)	Rehabilitated Commercial or Retail Use
Resource No. 26	Contributing Building	Agricultural Outbuilding	John Braselton Large Barn	B01 007	J.M. Braselton and A.E.B. Miller	Contributing Site, Building Not Present	Photo 18	Large Barn Building Missing, Foundation Remains
Resource No. 27	Contributing Building	Dwelling	John Braselton House	B01 007	J.M. Braselton and A.E.B. Miller	Contributing Building	Photo 15	
Resource No. 28	Contributing Building	Group of Agricultural Outbuildings	John Braselton Barn and outbuildings	B01 007	J.M. Braselton and A.E.B. Miller	Contributing Group of Agricultural Outbuildings	Photos 16, 17, 19, and Appendix C:Photo 49	
Resource No. 29	Contributing Building	Dwelling and Farm Buildings	Green Braselton House	B01 006	Memorial Estates Planner, Inc.	Contributing Building in Modern Context	Photos 20 and 21	Rehabilitated Commercial Use-Funery/Community
Resource No. 30	Contributing Building	Dwelling	5293 SR 53	B01 005A	N.G. Braselton	Contributing Building	Photo 22	This was and remains the only brick dwelling in the district
Resource No. 31	Contributing Building	Dwelling	N/A	B02 009B	FJH, LLC	Not In District, Missing	No Photo, See Figure 3	Not In District, Missing
Resource No. 32	Non-Contributing Building	Dwelling	5272 SR 53	B02 010	S. Korb and P. Patten	Not In District	Appendix C: Photos 44 and 45	Not a Development-Era Resource (1887-1951)
Resource No. 33	Non-Contributing Building	Federal Building	Ca. 1962 Post-Office Building	B02 009	FJH, LLC	Not In District	Appendix C: Photo 69	Not a Development-Era Resource (1887-1951)
Resource No. 34	Contributing Building	Historic Wood Commercial/Dwelling	Converted Second Store Building	B02 009	FJH, LLC	Not In District, Missing	Photo 24	Site overgrown, no evidence of building remaining
Resource No. 35	Contributing Building	Dwelling	House in Woods	B02 009B	FJH, LLC	Not in District, Present in Poor Condition	Appendix C: Photo 42	No Public Access to Site, Appears to at least be abandoned
Resource No. 36	Non-Contributing Building	Modern Brick Commercial	Bank Building	B02 009A	GCMT 11, LLC	Not In District	Appendix C: Photo 70	Rehabilitated Public Health Use
Resource No. 37	Contributing Building	Dwelling	9866 SR 124	B02 009B	FJH, LLC	Not In District, Missing	Photo 26	
Resource No. 38	Contributing Building	Dwelling	9836 SR 124	B02 024	Braselton Township Development, LLC	Not In District, Missing	Appendix C: Photo 41	See Appendix B: Photo 41
Resource No. 39	Contributing Building	One-Story Brick Commercial	Braselton Brothers Store	B02 008	Braselton Urban Development Agency	Contributing Building	Photos 25, 27 and 29	Rehabilitated Commercial Use-Antique Shop
Resource No. 40	Contributing Building	One-Story Brick Commercial	Braselton Brothers Store	B02 008	Braselton Urban Development Agency	Contributing Building	Photos 25, 27 and 29	Rehabilitated Commercial Use
Resource No. 41	Contributing Building	One-Story Brick Commercial	Braselton Brothers Store	B02 008	Braselton Urban Development Agency	Contributing Building	Photos 25, 27 and 29	Rehabilitated Commercial Use-Restaurant
Resource No. 42	Contributing Building	One-Story Warehouse/Compress	Braselton Brothers Commercial	B02 008	Braselton Urban Development Agency	Not In District, Missing	Photos 27 and 29	Modern Community Greenspace
Resource No. 43	Contributing Building	One-Story Warehouse/Compress	Braselton Brothers Commercial	B02 008	Braselton Urban Development Agency	Not In District, Missing	Photos 27 and 29	Modern Community Greenspace
Resource No. 44	Contributing Building	One-Story Warehouse/Compress	Braselton Brothers Commercial	B02 008	Braselton Urban Development Agency	Not In District, Missing	Photos 27 and 29	Modern Community Greenspace
Resource No. 45	Contributing Building	Dwelling	N/A	B02 008B	Braselton Urban Development Agency	Not In District, Missing	Photo 31	Modern Community Greenspace
Resource No. 46	Contributing Building	One-Story Brick Commercial	Braselton Brothers Store	B02 008	Braselton Urban Development Agency	Contributing Building	Photos 29 and 30	
Resource No. 47	Contributing Building	Multi-Story Brick Commercial	Braselton Brothers Store	B02 008	Braselton Urban Development Agency	Contributing Building	Photos 29 and 30	
Resource No. 48	Contributing Building – Relocated	Dwelling or Historic Wood Commercial	1957 Telephone Exchange Building	B01 009	Braselton Urban Development Agency	Location Not In District-Resource Moved (No. 64)	At Original Site in Appendix A: Photos 29 and 30	Removed from Parcel B02 007 to Site of Resource No. 64
Resource No. 49	Contributing Building	Historic Wood Commercial	Cotton Gin	B02 008B	Braselton Reserve Development, LLC	Contributing Building	Photo 28	Rehabilitated for Commercial use as a brewery

TABLE 1 BRASELTON HISTORIC DISTRICT ATTRITION STUDY RESOURCE INVENTORY

Resource Number	2001 Historic District Status	Resource Type	Resource Name, if applicable	Current Tax Parcel No.	Current Property Owner	2020 Historic District Status	Photographs/ Graphics	Notes and Comments
Resource No. 50	Contributing Building	Dwelling	Residence C (To be Demolished - 2010)	B02 008B	Braselton Reserve Development, LLC	Not In District, Missing	Photo 31	
Resource No. 51	Non-Contributing Building	Dwelling	Residence B, 9819 SR 124	Roadway	N/A	Not In District, Missing	Photo 31	
Resource No. 52	Contributing Site	Terraced Agricultural Field	Evans Farm Land	B02 025	A.M.W. Evans	Contributing Site	No Photo, See Figure 4	Historically and Currently Associated with Resource No. 53
Resource No. 53	Contributing Building	Dwelling	Evans House	B02 025	A.M.W. Evans	Contributing Building	Photo 32	
Resource No. 54	Contributing Building	Dwelling	N/A	B02 037A	Lexes Homes, Inc.	Not In District, Missing	Photo 31	
Resource No. 55	Contributing Building	Dwelling	Richardson House	B02 034	R.C. And R.B. Richardson	Contributing Building	Photo 33 (Right), Appendix C: Photo 39	
Resource No. 56	Non-Contributing Building	Dwelling	9678 SR 124	B02 035	S.C. And P.R. Duck	Non-Contributing Building	Photo 33 (Right), Appendix C: Photos 37-38	Not a Development-Era Resource (1887-1951)
Resource No. 57	Contributing Building	Dwelling	9656 SR 124	B02 036	J. Smith and Flores Investment Group, LLC	Contributing Building	Appendix C: Photo 35	
Resource No. 58	Contributing Building	Dwelling	9608 SR 124	119 013B	R.E. And S.A. Schurr	Contributing Building	Photo 34	
Resource No. 59	Contributing Building	Dwelling	Barnett House	B02 037	Lexes Homes, Inc.	Contributing Building	Photo 33 (Left), Appendix C: Photo 36	
Resource No. 60	Contributing Structure	Original SR 124/SR 53 Road Intersection	Irregular Crossroads	N/A	N/A	Contributing Remnant of Historic Structure	Photos 23, 25, and 33; Figure 3	Structure altered and truncated, historic crossroads remain with only limited east-west access
<b>HISTORIC RESOURCES WITHIN THE DISTRICT RELOCATED OR NOT IDENTIFIED IN 2001</b>								
Resource No. 61	Not Designated	Historic Wood Commercial	Former Auto Garage	B01 009	Braselton Urban Development Agency	Contributing Building	Appendix C: Photo 48	Rehabilitated Commercial/Retail Use
Resource No. 62	Not Designated	Historic Wood Commercial	36 Francis Street	B01 009	Braselton Urban Development Agency	Contributing Building	Photo 12 (Left); Appendix C: Photo 50	Rehabilitated Commercial/Retail Use
Resource No. 63	Not Designated - Relocated	Historic Community Building	Old Jail/Pokey	B01 009	Braselton Urban Development Agency	Contributing Building	Appendix C: Photo 51	Relocated After 2010 From either Parcel B02 008B or Parcel B02 008E (East of Cotton Gin)
Resource No. 64	Contributing Building-Relocated	Historic Dwelling	1957 Telephone Exchange Building	B01 009	Braselton Urban Development Agency	Contributing Building	Appendix C: Photos 46 and 47	Relocated from Parcel B02 007 (Site of Resource No. 48)
<b>NEW CONSTRUCTION WITHIN THE ORIGINAL DISTRICT BOUNDARIES AFTER 2001 NOMINATION</b>								
At Resource No. 18	New on Site of Contributing Building	Braselton Government Facility	Planning and Development/Public Works	B02 002	Town Of Braselton	Not In District	Appendix C: Photo 68	Modern Intrusions include also a paved roadway and parking facilities
At Resource No. 17	New on Site of Contributing Building	Commercial	Northeast Georgia Bank	B01 011A	Northeast Georgia Bank	Not In District	Appendix C: Photo 67	
At Resource No. 19	New on Site of Non-Contributing Building	Commercial	Northeast Georgia Bank	B01 012	Northeast Georgia Bank	Not In District	Appendix C: Photo 66	
At Resource No. 20	New on Site of Non-Contributing Building	Government Facility	Braselton Police and Municipal Court	B02 003	Town Of Braselton	Not In District	Appendix C: Photo 66	
At Resource No. 48	New on Site of Contributing Building	Multi-Level Parking Facility	Braselton Parking Deck	B02 007	Braselton Urban Development Agency	Not In District	Appendix C: Photo 64	
At Resource No. 48	New on Site of Contributing Building	Communications	Alltel Building	B02 007	Braselton Urban Development Agency	Not In District	Appendix C: Photo 65	
At Resource Nos. 42-44	New on Site of Contributing Buildings	Community Facility	Amphitheater	B02 008	Braselton Urban Development Agency	Not In District	Photos 27 and 29	
At Resource No. 45	New on Site of Contributing Building	Community Facility	Greenspace/Maintenance	B02 008D	Braselton Urban Development Agency	Not In District	Site Appears in Background Appendix C: Photo 31	