

City Lights Phase V (North Block)
617 Parkway Drive NE, Atlanta Fulton County, Georgia
Digital Permanent Archival Record Photographs

HP Number: HP-240503-003

Address: 617 Parkway Drive NE in Atlanta, Fulton County, Georgia. See Figure 1: Project Location Map.

Cross Streets: 617 Parkway Drive NE fronts Parkway Drive. The property is bound by Parkway Dr NE on the west and North Avenue on the south. See Figures 1-3 for project location mapping.

USGS Information: The subject property is located on the Northeast Atlanta, Georgia USGS Quadrangle Map in zone 16N at the following coordinates (WGS 84) : Latitude of 33.771425 and Longitude of -84.372481. See Figure 2: Excerpt of Northeast Atlanta USGS Map.

Resource Description: The subject building, 617 Parkway Drive NE, is one of four buildings proposed for demolition as part of project HP-240503-003 (see Figures 3 - 6). The property is identified in the Georgia Natural, Archaeological & Historic Resources online database (GNAHRGIS) as number 247747. The building is a vernacular Hotel Apartment Building that was constructed c.1925. Characteristics of this apartment building type include the rectangular footprint, setback from lot lines to provide space for landscaping, and main entrance connecting apartments with a central hallway. The building primarily reflects the Craftsman style in its historic, character-defining features such as a brick masonry exterior, decorative brick soldier course, decorative brick panels and stringcourses (photographs 2 - 3), and a symmetrical elevation with a central building entrance (photograph 2). The flat roof is surrounded by a parapet and decorative accent terracotta awnings along the parapet give the impression of a sloped roof (photograph 2).

The building is a part of the National Register of Historic Places (NRHP)-eligible Old Fourth Ward historic district northeast of downtown Atlanta, Georgia. The district is contained in an urbanized corridor with a mix of historic and nonhistoric, residential, and commercial properties. Boulevard serves as its primary thoroughfare.

History: The area of the Old Fourth Ward historic district was annexed into the City of Atlanta in 1870 and developed until the Great Fire of 1917 (May 21, 1917). The area of Parkway and Boulevard developed primarily with grand mansions with smaller, modest homes in the community's interior. This area was known as Jackson Hill, set within the larger Bedford-Pine neighborhood. The Great Fire destroyed 1,938 buildings and wiped out 300 acres of real estate in the district and the surrounding area. The fire coincided with economic growth in Atlanta during and following World War I prompting the redevelopment of the district with apartment buildings built primarily for white middle-income renters. The neighborhood, however, declined in value and maintenance following World War II as middle-class residents moved away the city. Much of the Bedford-Pine neighborhood west of the district was destroyed during the 1960's and 1970's in urban renewal projects. From 1972 to 1981, the area of the district was subject to an initiative called "Project Rehab," in which a number of the district's apartment buildings were rehabilitated for low-income and subsidized housing.

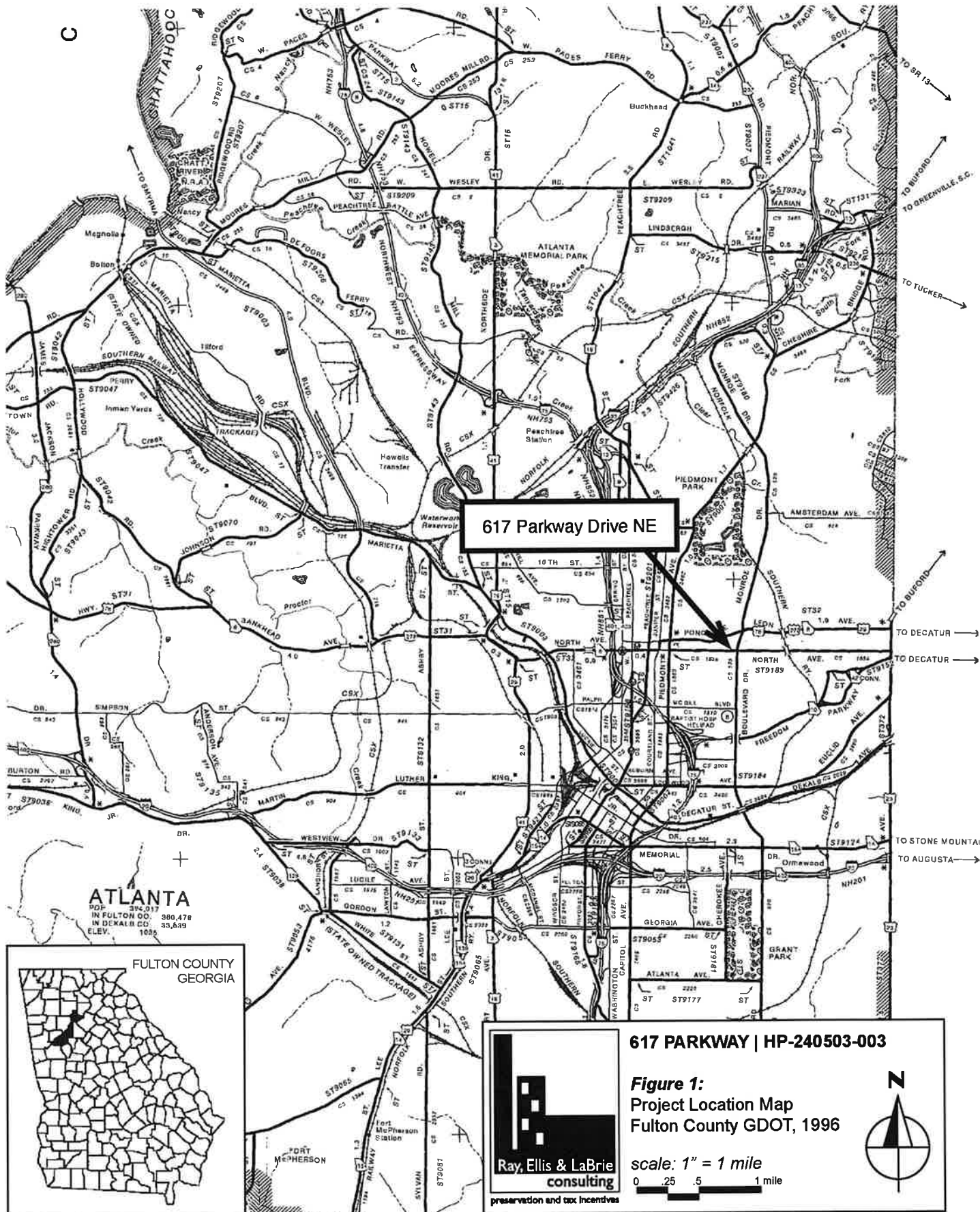
Significance: The building is a contributing property in the NRHP-eligible Old Fourth Ward historic district, and an intact example of an early-20th century apartment building that illustrates the need for housing in the first half of the 20th century in Atlanta due to economic growth following World War I and following the Great Fire of 1917. For these reasons, the property is considered locally significant under Criterion A for Community Planning and Development. The property is also locally significant under Criterion C for Architecture as an intact example of an early-20th century building that can be categorized as a vernacular variant of the Garden Apartment Building Type with elements of the Neoclassical Revival style which has been identified by the Georgia SHPO as having significance in the architectural development in Georgia.

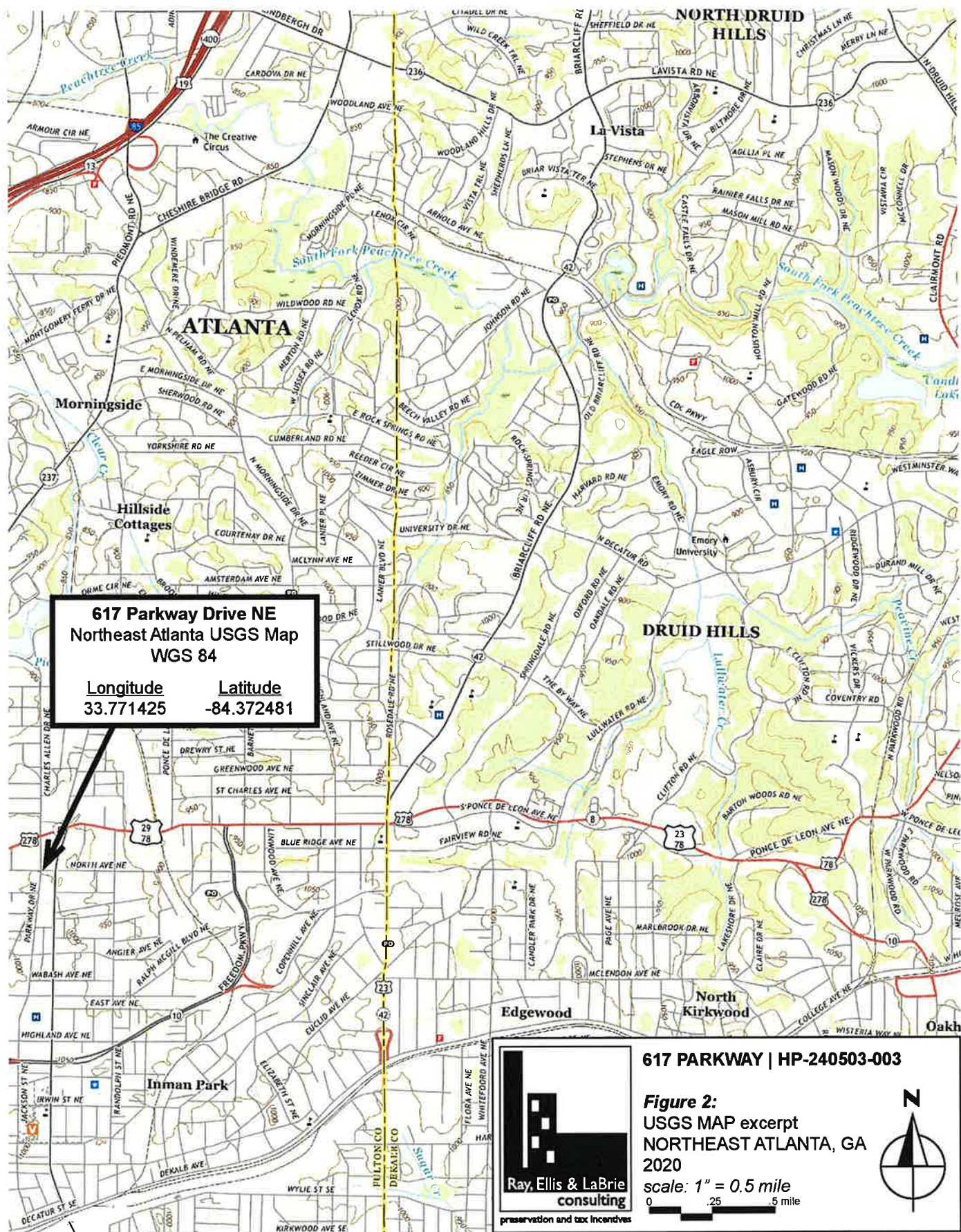
Attachments:

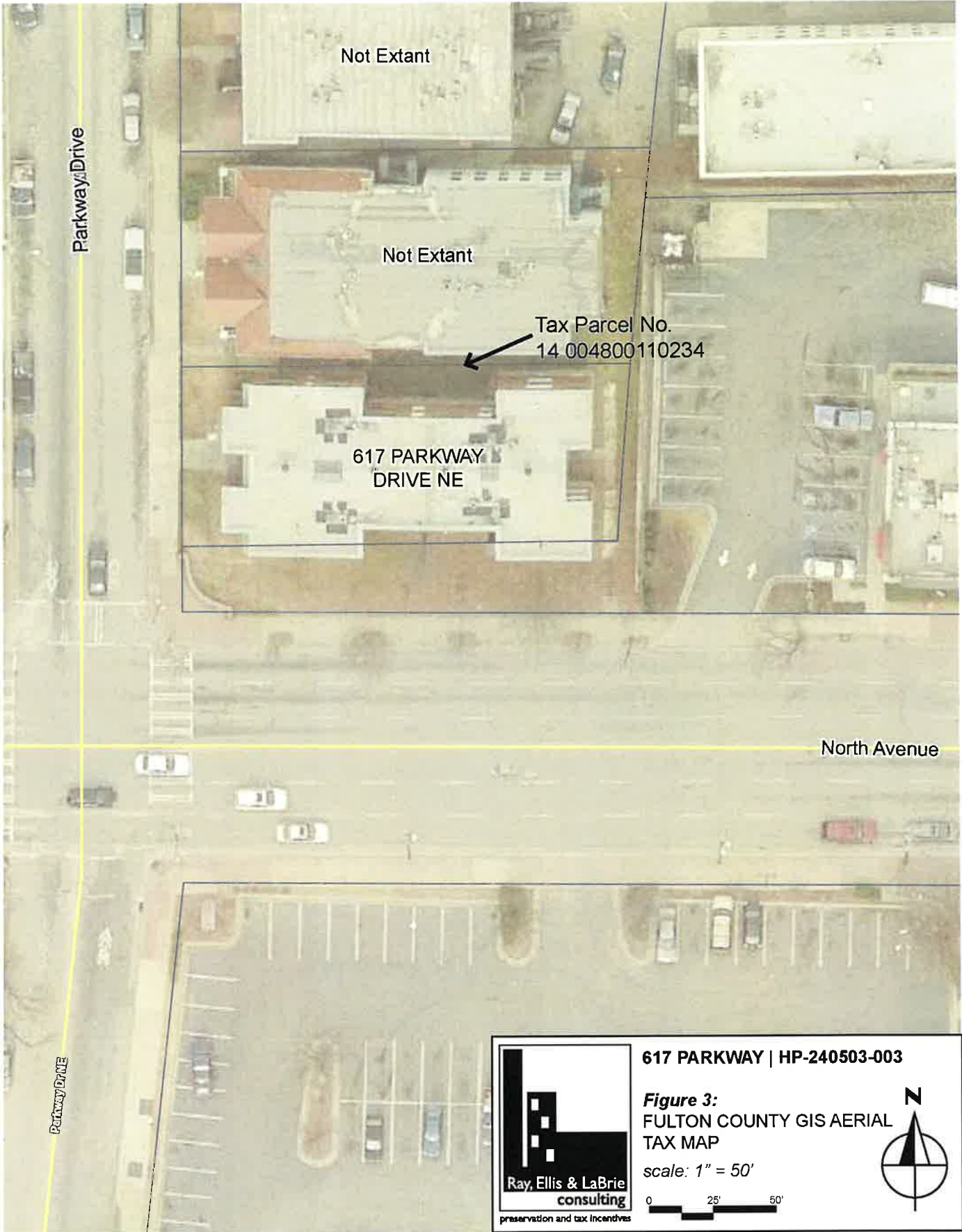
Figure 1: Project Location Map
Figure 2: USGS Map Excerpt
Figure 3: Tax Map, Fulton County GIS Aerial
Figure 4a: Site Plan Sketch
Figure 4b: Site Plan Sketch - Photographic Key
Figure 5a: 1st Floor Sketch

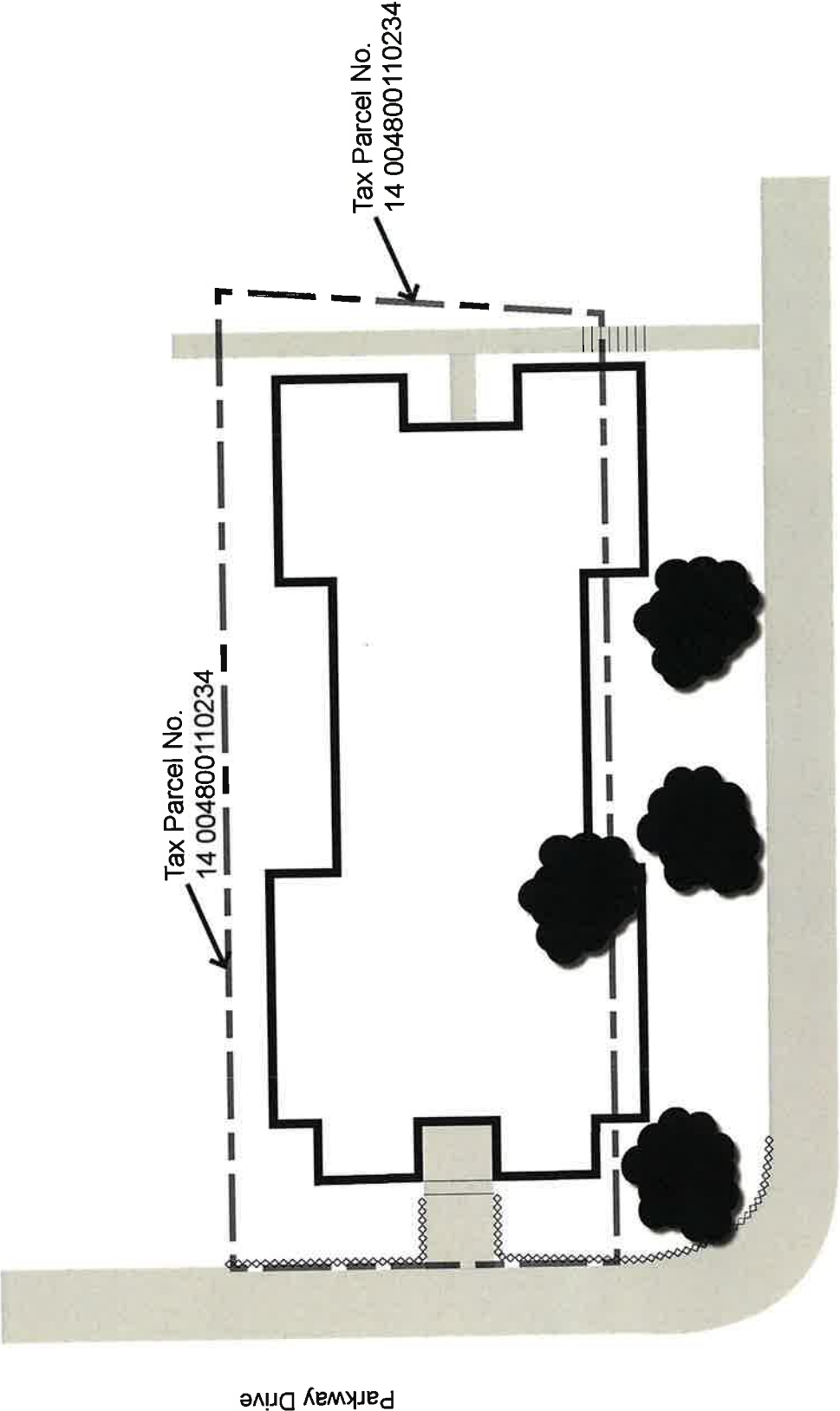
Figure 5b: 1st Floor Sketch - Photographic Key
Figure 6a: 2nd Floor Sketch
Figure 6b: 2nd Floor Sketch - Photographic key
Photographic Log
Photographic Contact Sheets

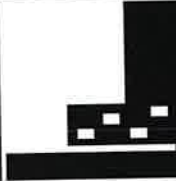
NOTE: Digital photographs are saved in the following formats: Digital Negative (.dng), JPEG, and TIFF on archival DVDs.












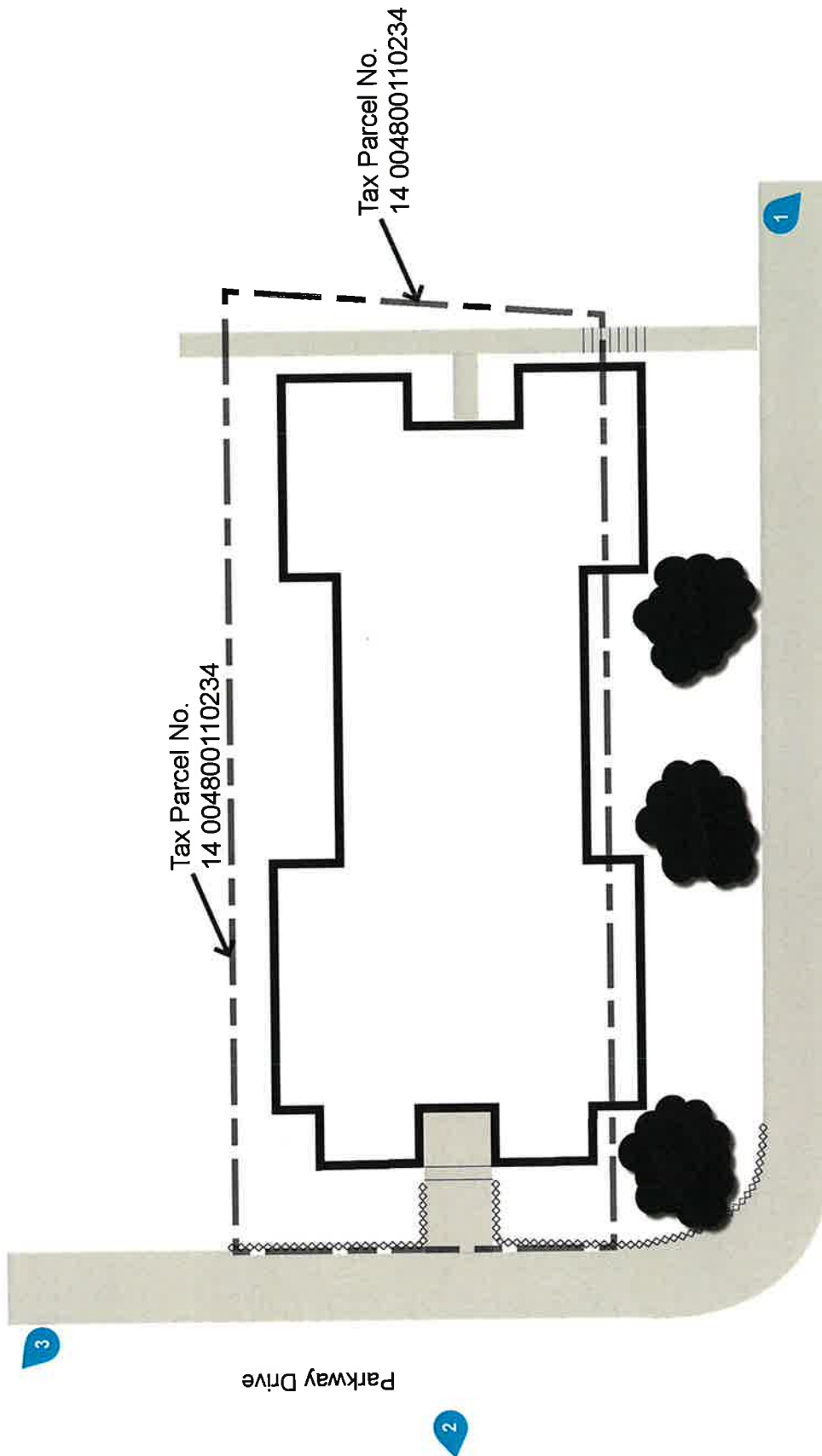
Ray, Ellis & LaBrie
consulting
preservation and tax incentives

617 PARKWAY | HP-240503-003

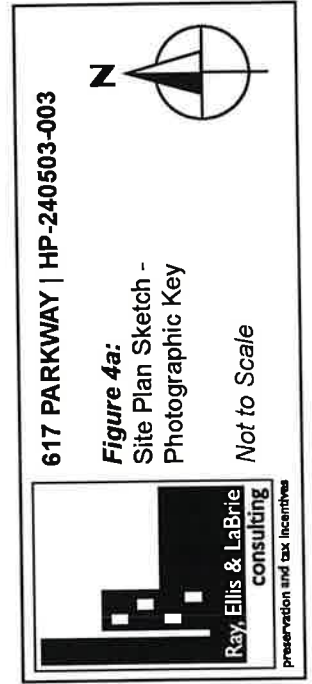
Figure 4a:
Site Plan Sketch

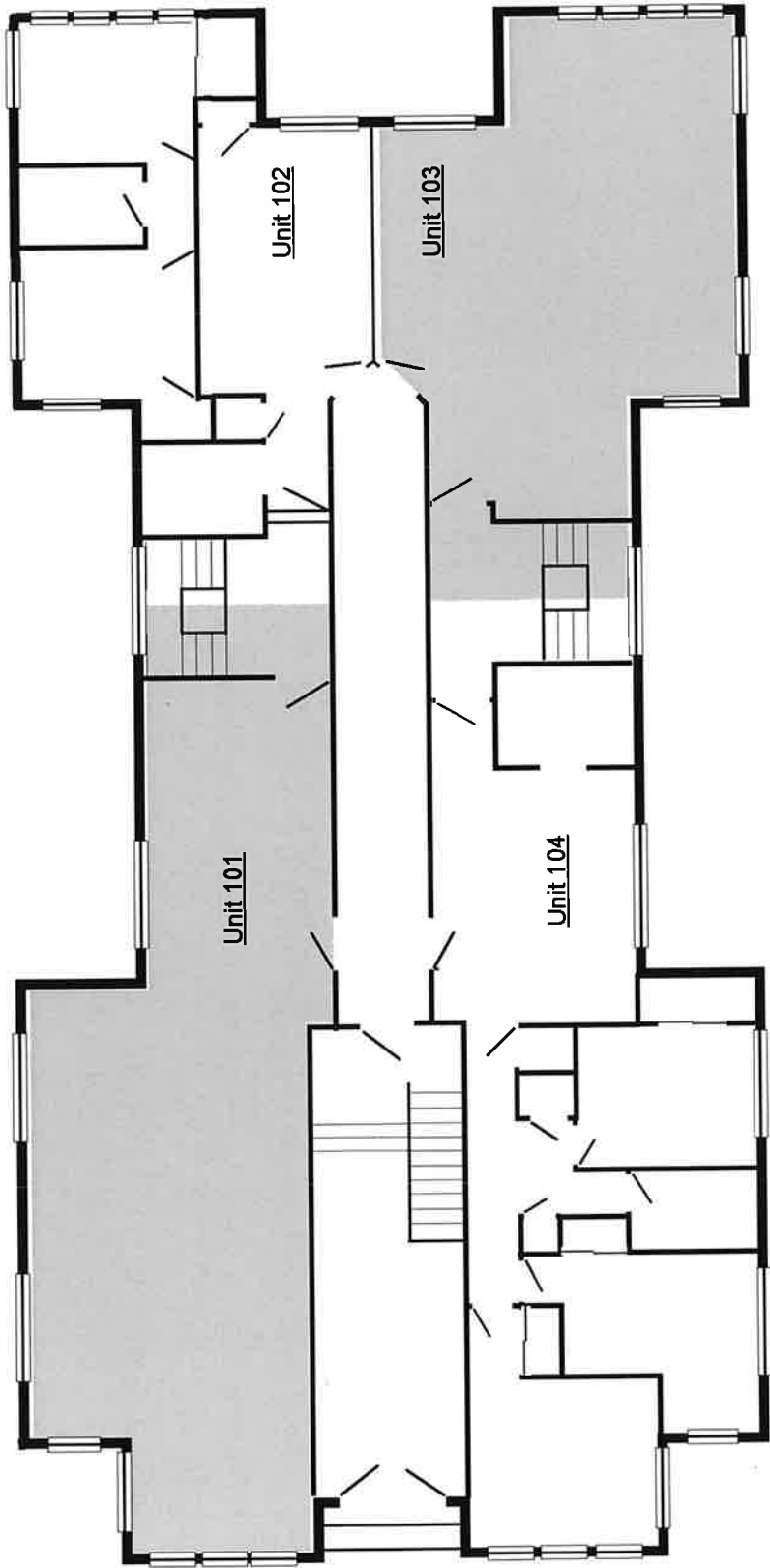
Not to Scale





North Avenue

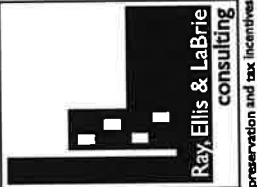


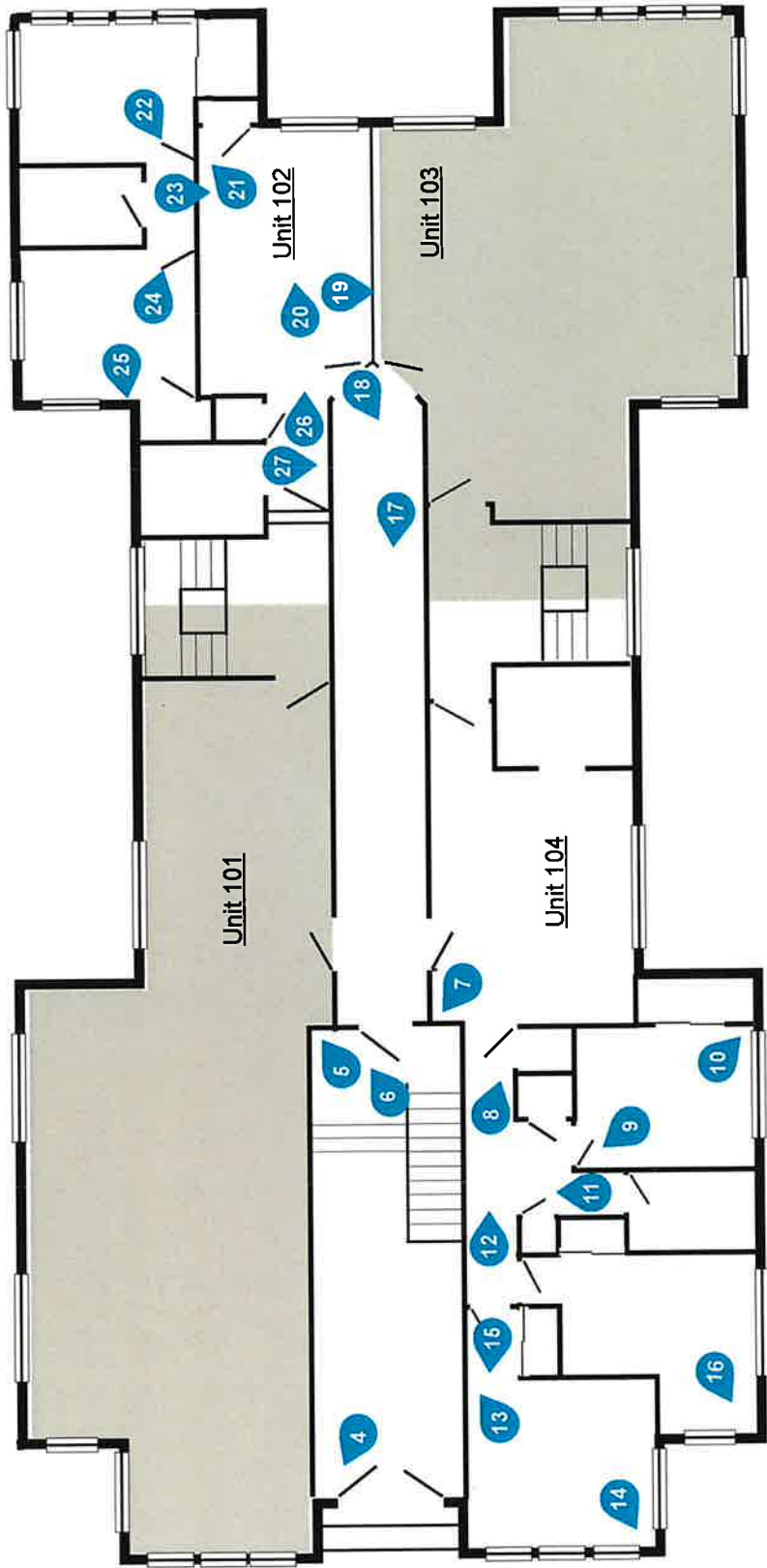


617 PARKWAY | HP-240503-003

Figure 5a:
1st Floor sketch

Not to Scale

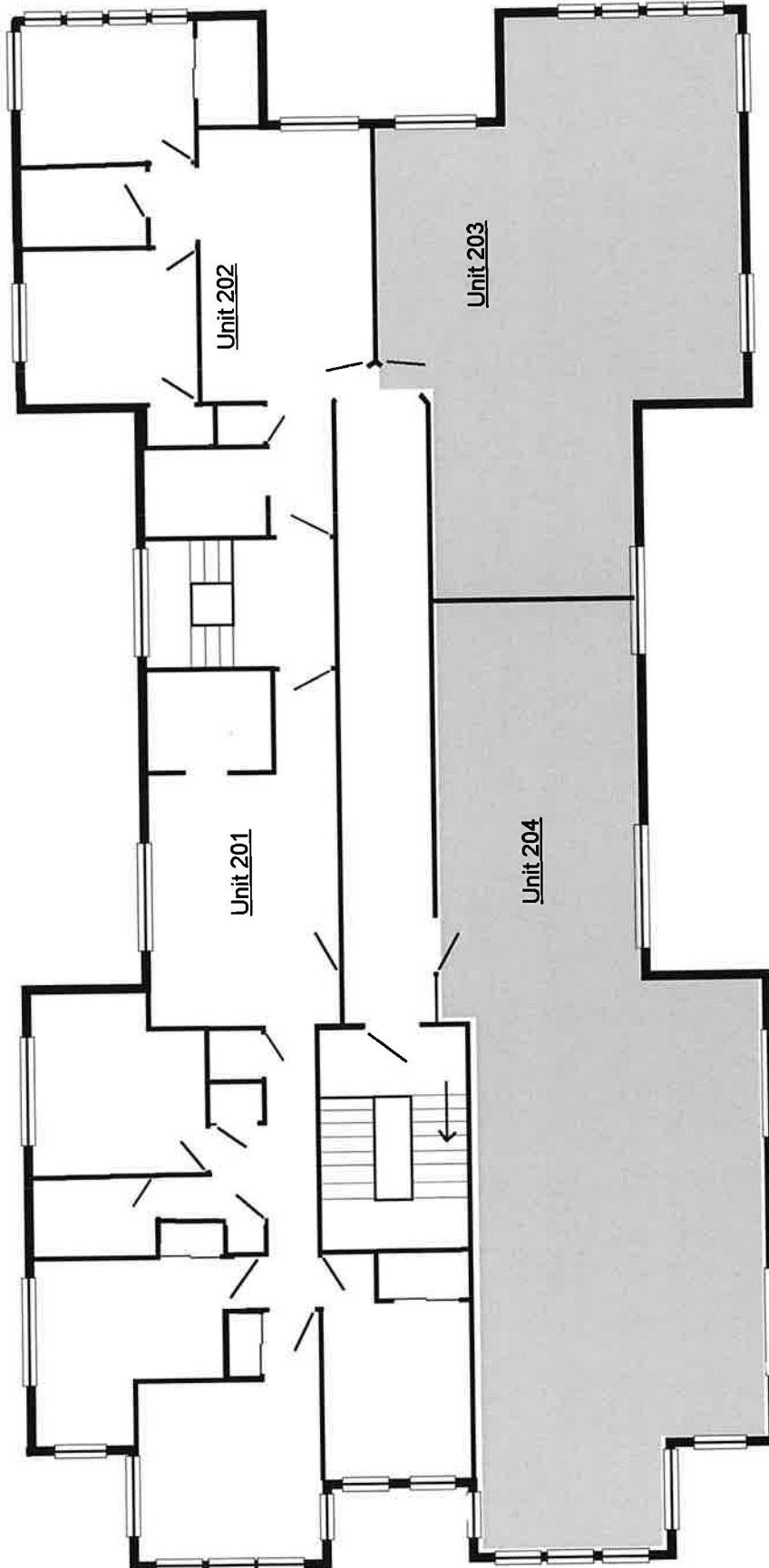




617 PARKWAY | HP-240503-003

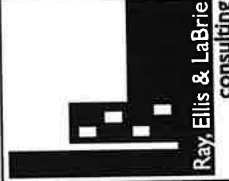

Figure 5b:
1st Floor sketch -
Photographic key
Not to Scale

Ray Ellis & LaBrie
consulting
preservation and tax incentives

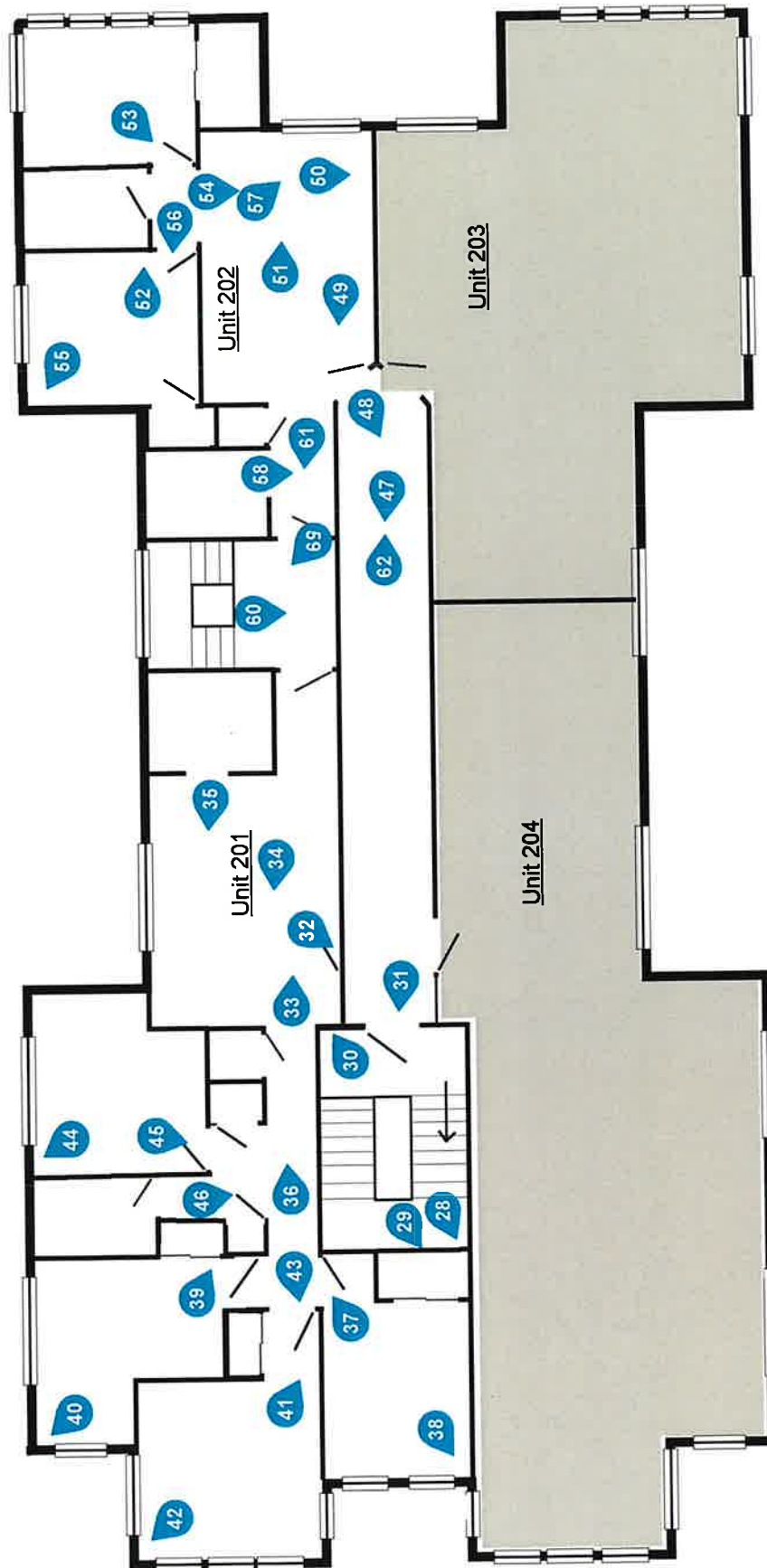


617 PARKWAY | HP-240503-003

Figure 6a:
2nd Floor Sketch
Not to Scale



Ray Ellis & LaBrie
consulting
preservation and tax incentives

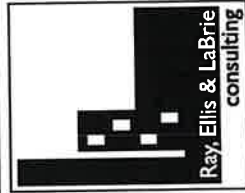


617 PARKWAY | HP-240503-003



Figure 6a:
2nd Floor Sketch -
Photographic Key

Not to Scale



617 PARKWAY DRIVE NE | HP-240503-003

Atlanta, Fulton County, Georgia

Photographic Log

Photographer: Emily Burrows, Architectural Historian, Ray, Ellis & LaBrie Consulting

Date: November 7, 2024

Photographs on file at Georgia SHPO

1. Building exterior rear elevation, photographer facing northwest.
2. Building exterior, front elevation, photographer facing east.
3. Building exterior, photographer facing southeast.
4. Interior first floor entry hall, photographer facing east.
5. Interior first floor entry way and stairway, photographer facing west.
6. Interior first floor stairway, photographer facing west and up towards upper floors.
7. Interior of apartment 104 living room, photographer facing southeast.
8. Interior of apartment 104 showing hallways, photographer facing west.
9. Interior of apartment 104 bedroom 3, photographer facing southeast.
10. Interior of apartment 104 bedroom 10, photographer facing northwest.
11. Interior of apartment 104 bathroom, photographer facing south.
12. Interior of apartment 104 hallway facing into bedroom, photographer facing west.
13. Interior of apartment 104 bedroom 1, photographer facing northeast.
14. Interior of apartment 104 bedroom 1, photographer facing southwest.
15. Interior of apartment 104 hallway looking towards living room, photographer facing east.
16. Interior of apartment 104 bedroom 2, photographer facing northeast.
17. Interior of building, first floor hallway, photographer facing east.
18. Interior of building, first floor, outside of apartment 102. Photographer facing northeast.
19. Interior of building showing apartment 102 living room, photographer facing north.
20. Interior of apartment 102 living room facing hallway, photographer facing west.
21. Interior of apartment 102 living room, photographer facing southwest.
22. Interior of apartment 102 bedroom, photographer facing northeast.
23. Interior of apartment 102 showing bathroom, photographer facing north.
24. Interior of apartment 102 bedroom, photographer facing west.
25. Interior of apartment 102 bedroom, photographer facing east.
26. Interior of apartment 102 facing hallway near kitchen, photographer facing west.
27. Interior of apartment 102 showing kitchen, photographer facing north.
28. Interior of building stairway to second floor, photographer facing northeast.
29. Interior of building stairway second floor landing showing skylight, photographer facing northeast.
30. Interior of building stairway, photographer facing southwest.
31. Interior second floor hallway, photographer facing east.
32. Interior of apartment 201 showing living room, photographer facing northeast.
33. Interior of apartment 201 showing hallway, photographer facing west.
34. Interior of apartment 201 living room showing view towards kitchen and back hallway, photographer facing east.
35. Interior of apartment 201 showing kitchen, photographer facing east.
36. Interior of apartment 201 hallway, photographer facing west.
37. Interior of apartment 201 bedroom, photographer facing southwest.
38. Interior of apartment 201 bedroom, photographer facing northeast.
39. Interior of apartment 201 bedroom 2, photographer facing northwest.
40. Interior of apartment 201 bedroom 2, photographer facing southeast.
41. Interior of apartment 201 bedroom 3, photographer facing northwest.
42. Interior of apartment 201 bedroom 3, photographer facing southeast.
43. Interior of apartment 201 hallway, photographer facing east.
44. Interior of apartment 201 bedroom 1, photographer facing southeast.
45. Interior of apartment 201 bedroom 1, photographer facing southwest.
46. Interior of apartment 201 showing bathroom, photographer facing north.
47. Interior of second floor hallway, photographer facing east.
48. Interior of second floor hallway, photographer showing entry door to apartment 202.
49. Interior of apartment 201 living room, photographer facing east.
50. Interior of apartment 201 living room, photographer facing north.
51. Interior of apartment 201 showing hallway, photographer facing west.
52. Interior of apartment 201 bedroom 1, photographer facing west.

617 PARKWAY DRIVE NE | HP-240503-003

Atlanta, Fulton County, Georgia

- 53. Interior of apartment 201 bedroom 2, photographer facing northeast.
- 54. Interior of apartment 201 showing bathroom, photographer facing north.
- 55. Interior of apartment 201 bedroom 1, photographer facing southeast.
- 56. Interior of apartment 201, photographer facing east.
- 57. Interior of apartment 201, photographer facing northwest.
- 58. Interior of apartment 201 showing kitchen, photographer facing north.
- 59. Interior of second floor hallway and stairwell between apartments 201 and 202, photographer facing northwest.
- 60. Interior of second floor hallway and stairwell between apartments 201 and 202, photographer facing north.
- 61. Interior of apartment 201 showing hallway facing towards living room, photographer facing east.
- 62. Interior of second floor hallway, photographer facing west.

617 PARKWAY DRIVE NE | HP-240503-003
Atlanta, Fulton County, Georgia



GA_Fulton_617 Parkway_001.jpg



GA_Fulton_617 Parkway_002.jpg



GA_Fulton_617 Parkway_003.jpg



GA_Fulton_617 Parkway_004.jpg



GA_Fulton_617 Parkway_005.jpg



GA_Fulton_617 Parkway_006.jpg



GA_Fulton_617 Parkway_007.jpg



GA_Fulton_617 Parkway_008.jpg



GA_Fulton_617 Parkway_009.jpg



GA_Fulton_617 Parkway_010.jpg



GA_Fulton_617 Parkway_011.jpg



GA_Fulton_617 Parkway_012.jpg



GA_Fulton_617 Parkway_013.jpg



GA_Fulton_617 Parkway_014.jpg



GA_Fulton_617 Parkway_015.jpg



GA_Fulton_617 Parkway_016.jpg



GA_Fulton_617 Parkway_017.jpg



GA_Fulton_617 Parkway_018.jpg



GA_Fulton_617 Parkway_019.jpg



GA_Fulton_617 Parkway_020.jpg



GA_Fulton_617 Parkway_021.jpg



GA_Fulton_617 Parkway_022.jpg



GA_Fulton_617 Parkway_023.jpg



GA_Fulton_617 Parkway_024.jpg



GA_Fulton_617 Parkway_025.jpg



GA_Fulton_617 Parkway_026.jpg



GA_Fulton_617 Parkway_027.jpg



GA_Fulton_617 Parkway_028.jpg



GA_Fulton_617 Parkway_029.jpg



GA_Fulton_617 Parkway_030.jpg



GA_Fulton_617 Parkway_031.jpg



GA_Fulton_617 Parkway_032.jpg



GA_Fulton_617 Parkway_033.jpg



GA_Fulton_617 Parkway_034.jpg



GA_Fulton_617 Parkway_035.jpg



GA_Fulton_617 Parkway_036.jpg



GA_Fulton_617 Parkway_037.jpg



GA_Fulton_617 Parkway_038.jpg



GA_Fulton_617 Parkway_039.jpg



GA_Fulton_617 Parkway_040.jpg



GA_Fulton_617 Parkway_041.jpg



GA_Fulton_617 Parkway_042.jpg



GA_Fulton_617 Parkway_043.jpg



GA_Fulton_617 Parkway_044.jpg



GA_Fulton_617 Parkway_045.jpg



GA_Fulton_617 Parkway_046.jpg



GA_Fulton_617 Parkway_047.jpg



GA_Fulton_617 Parkway_048.jpg

617 PARKWAY DRIVE NE | HP-240503-003
Atlanta, Fulton County, Georgia



GA_Fulton_617 Parkway_049.jpg



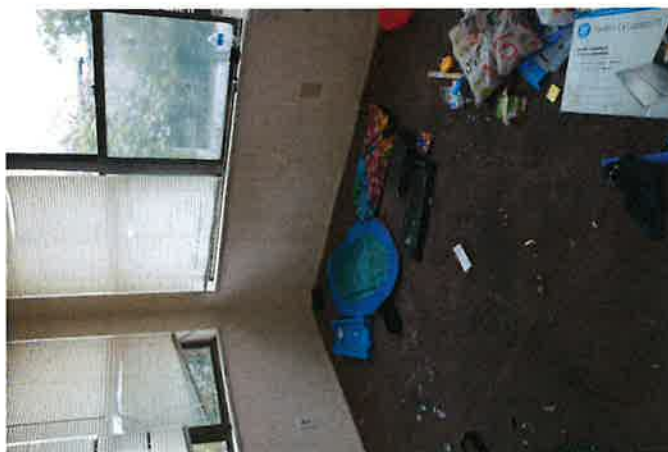
GA_Fulton_617 Parkway_050.jpg



GA_Fulton_617 Parkway_051.jpg



GA_Fulton_617 Parkway_052.jpg



GA_Fulton_617 Parkway_053.jpg



GA_Fulton_617 Parkway_054.jpg



Ga-Fulton-617 Parkway-055.jpg



Ga-Fulton-617 Parkway-056.jpg



GA_Fulton_617 Parkway_057.jpg



GA_Fulton_617 Parkway_058.jpg



GA_Fulton_617 Parkway_059.jpg



GA_Fulton_617 Parkway_060.jpg



GA_Fulton_617 Parkway_061.jpg



GA_Fulton_617 Parkway_062.jpg